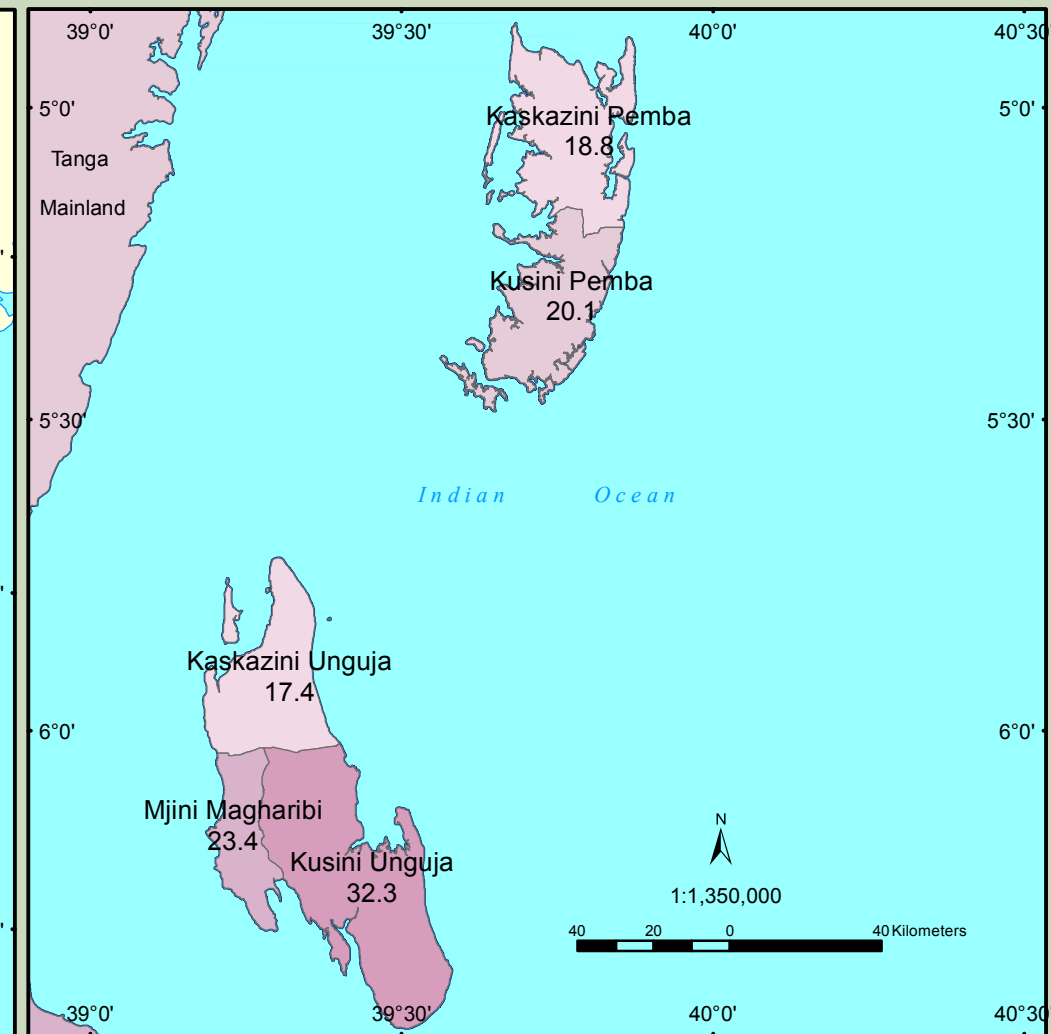
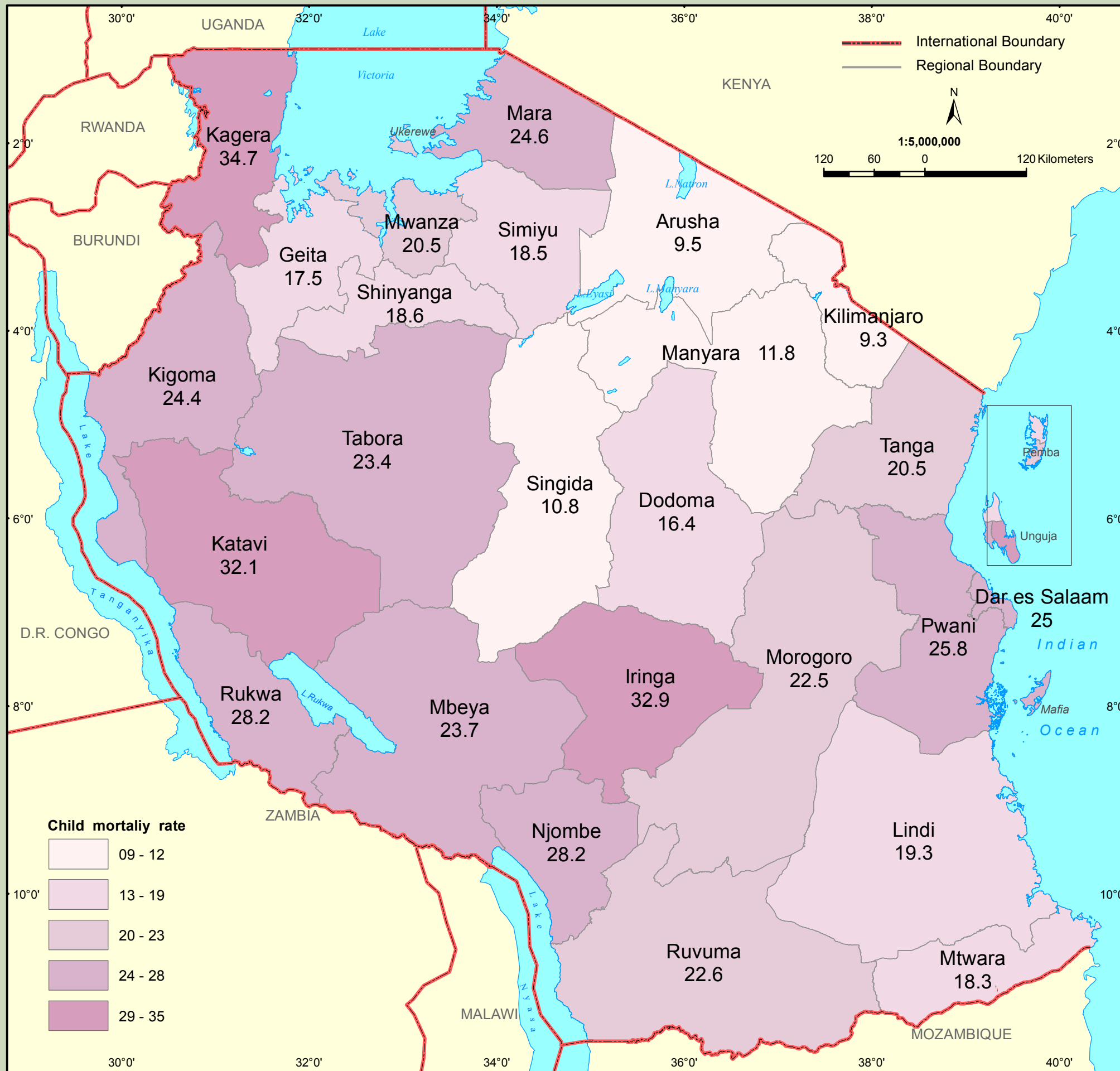


Child mortality rate



Child Mortality Rate (CMR) is a measure which relates child deaths aged between one and four years. In Tanzania, CMR was found to be 21.3 deaths per 1,000 live births. There are big variations regionally as the lowest is 9.3 deaths per 1,000 live births (Kilimanjaro) and 34.7 deaths per 1,000 live births (Kagera). Regions which had low estimates of CMR include Arusha (9.5), Singida (10.8) and Manyara (11.8). Regions which recorded the highest CMR, apart from Kagera, are Iringa (32.9), Kusini Unguja (32.3), Katavi (32.1), Rukwa and Njombe (28.2 each) and Mara (24.6).