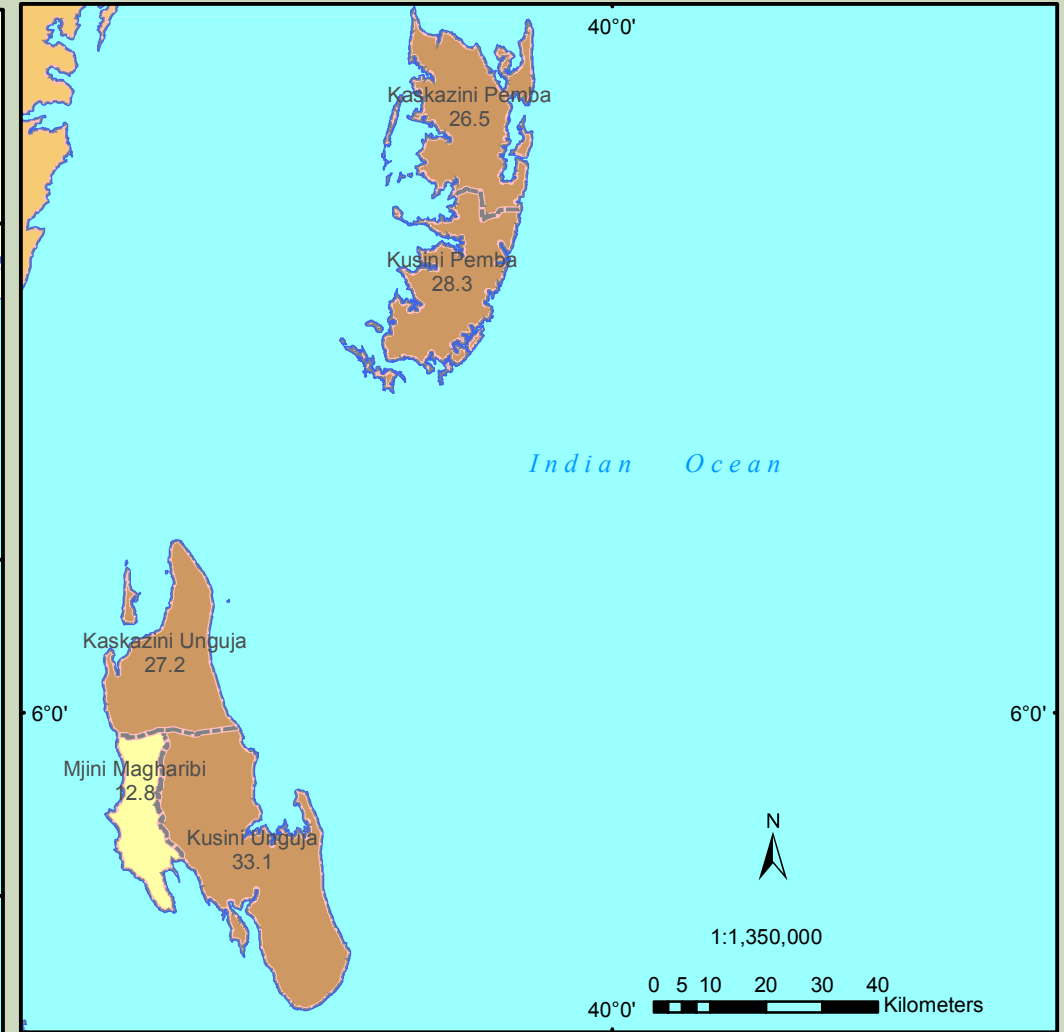
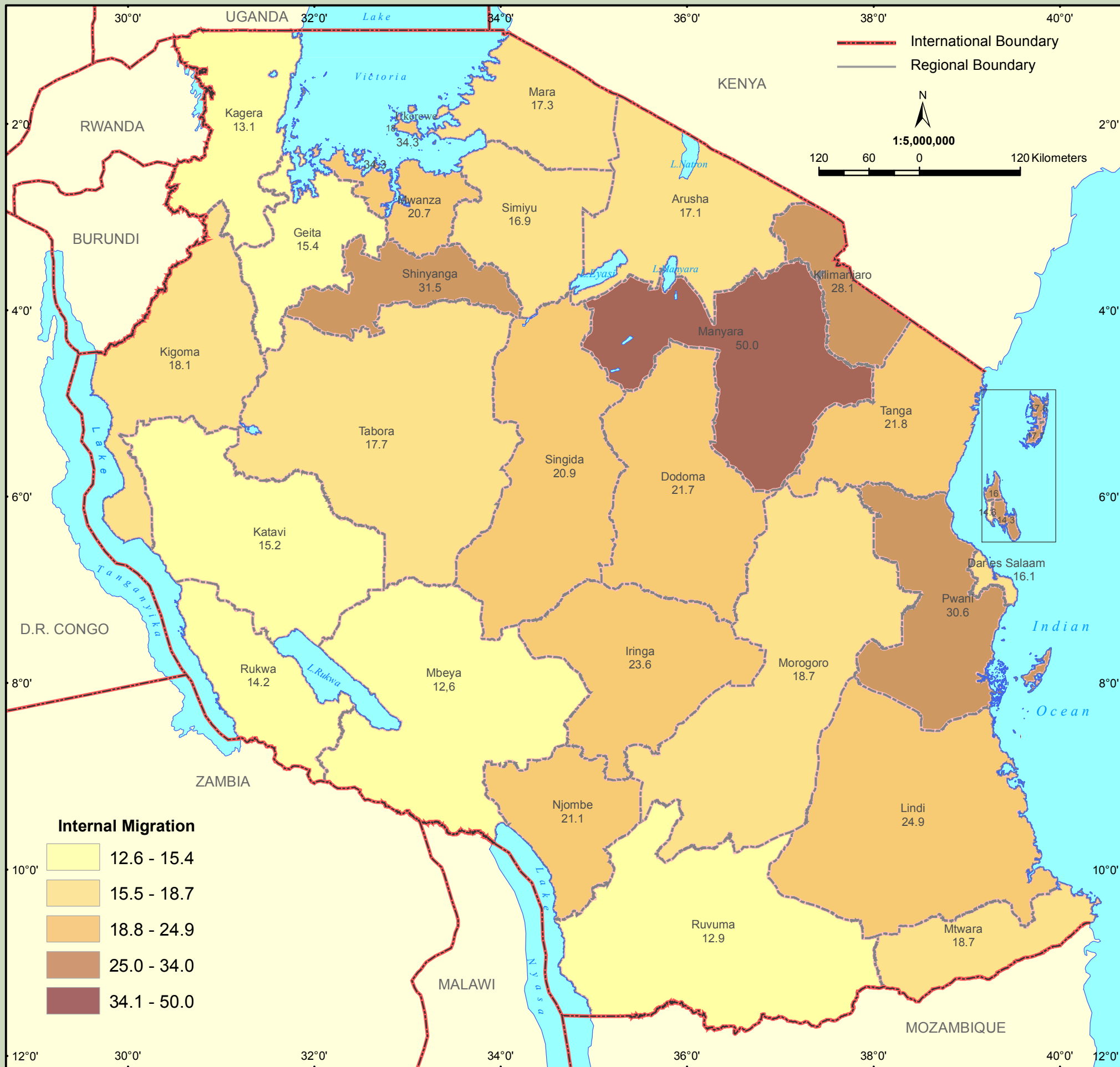


Percentage of internal migration



Internal movement of people from one part of the country to another is inevitable. The 2012 PHC shows that some regions had a high proportion of their population that was found to have migrated to these regions. The most notable regions with high percentages of internal migrants include Manyara (52 percent), Kusini Unguja (33.1 percent), Shinyanga (31.5 p and Pwani (30.6 percent). Surprisingly, predominantly urban regions of Dar es Salaam and Mjini Magharibi did not record high percentages of internal migrants (16.1 and 12.8 percent respectively). Few other regions had less than 20 percent of their total population of internal migrants who were found in those regions. Such regions are Kagera (13.1 percent), Rukwa (14.2 percent), Katavi (15.2 percent), Geita (15.4 percent) and Dar es Salaam (16.1 percent).