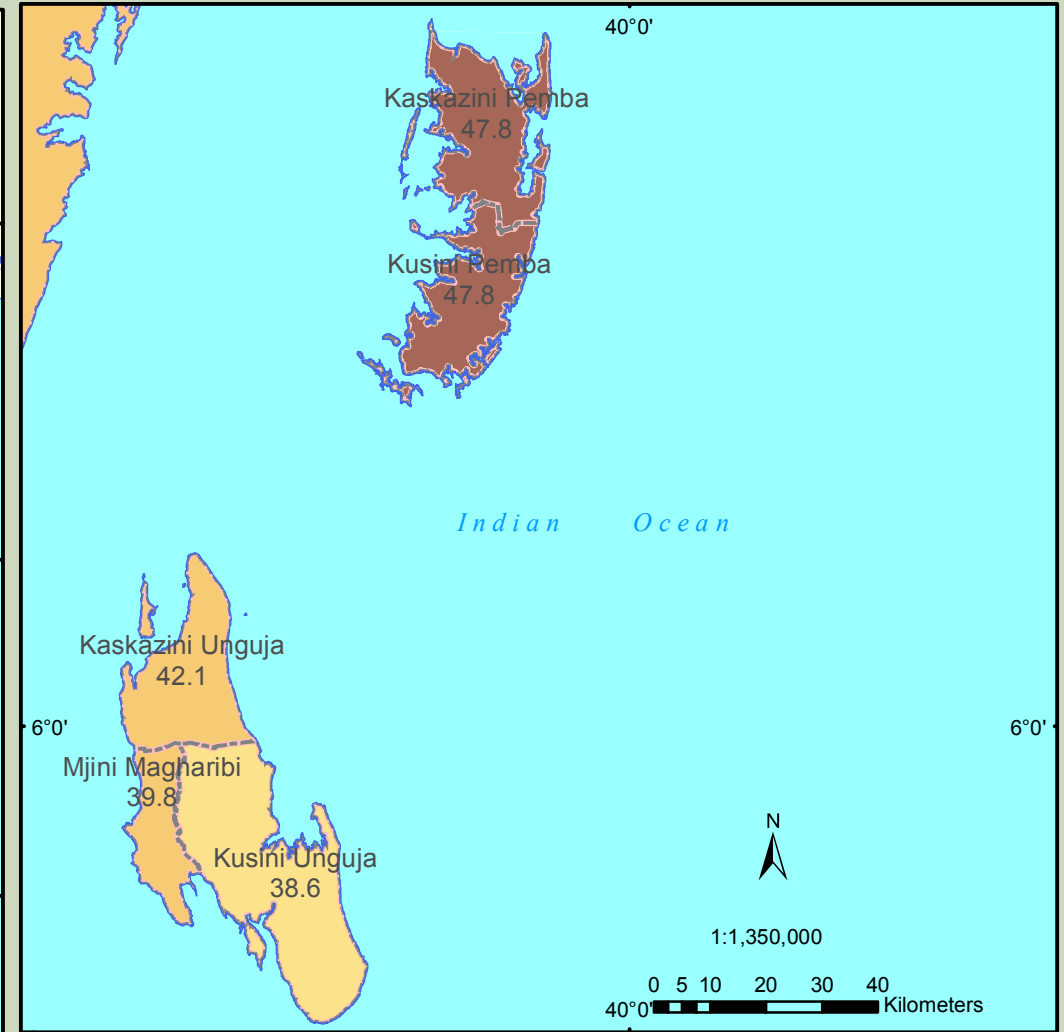
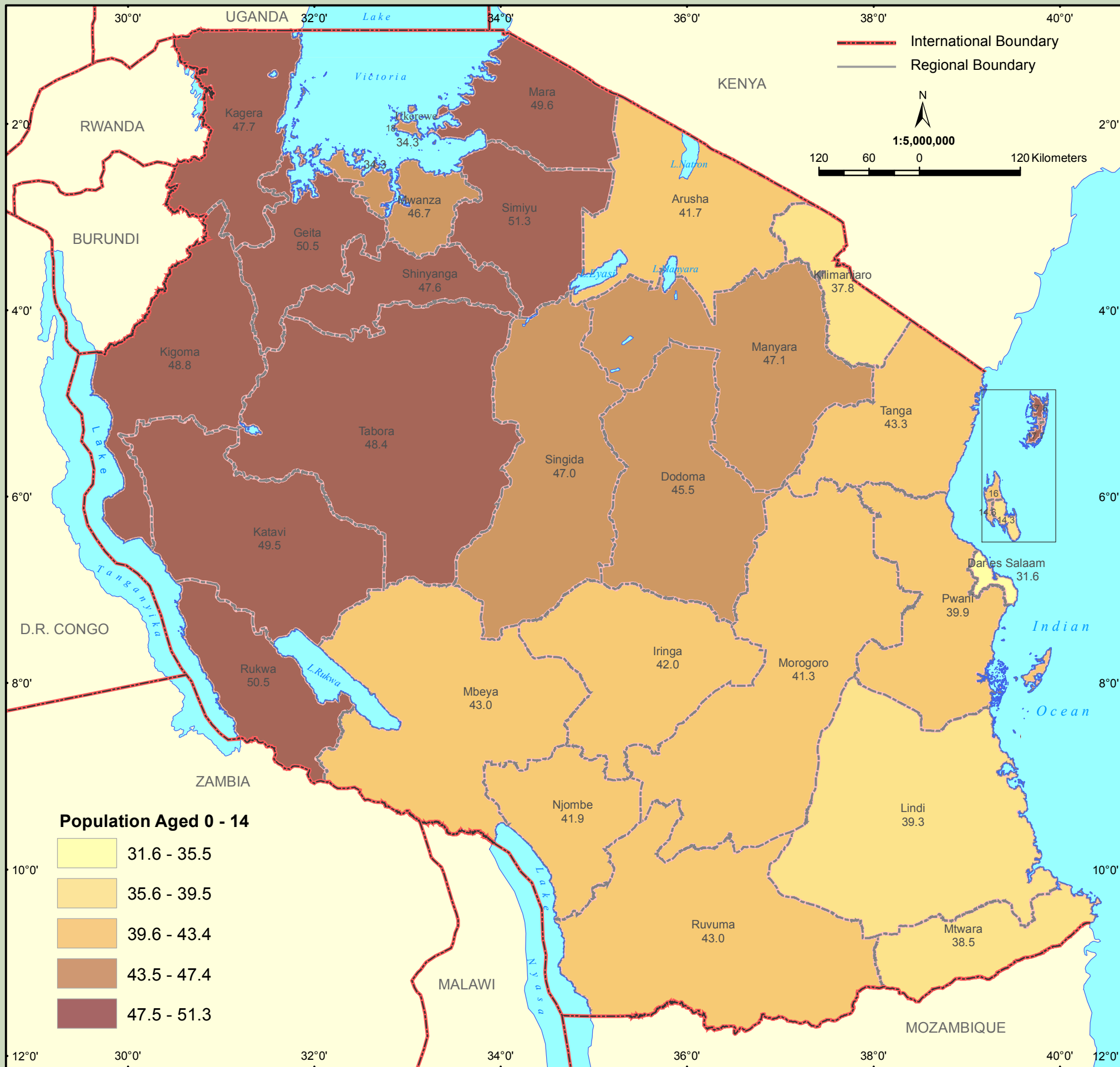


# Proportion of children 0-14 years



The proportion of the population aged below 15 years (0-14 years) has remained high in Tanzania context. The proportion of the population aged 0-14 years has shown a decline between 1988 and 2012. The proportion of the 0-14 population declined from 45.8 percent to 44.3 percent in 2002 and down to 43.9 percent in 2012. This high proportion has a big impact on the future population growth of Tanzania. The contribution of the regions to the overall proportion of Tanzania's 0-14 population is significant as the proportion of the 0-14 population above the national level of 43.9 percent is observed in 15 regions. Among the regions which recorded more than 49 percent, the highest recorded proportion of the population aged below 15 years was recorded in Simiyu Region (51.3 percent) and was followed by Geita and Rukwa (49.5 percent each), Kigoma (49.8 percent), Mara (49.6 percent) and Katavi (49.5 percent). Regarding regions which had the lowest proportions (below 40.0 percent) of their populations below 15 years, Dar es Salaam recorded 31.6 percent, followed by Kilimanjaro (37.8 percent), Kusini Unguja and Mtwara (38.5 percent each), Lindi (39.3 percent), Mjini Unguja (39.8 percent) and Pwani (39.9 percent). The remaining regions had proportions between 40.0 and 49.4 percent.