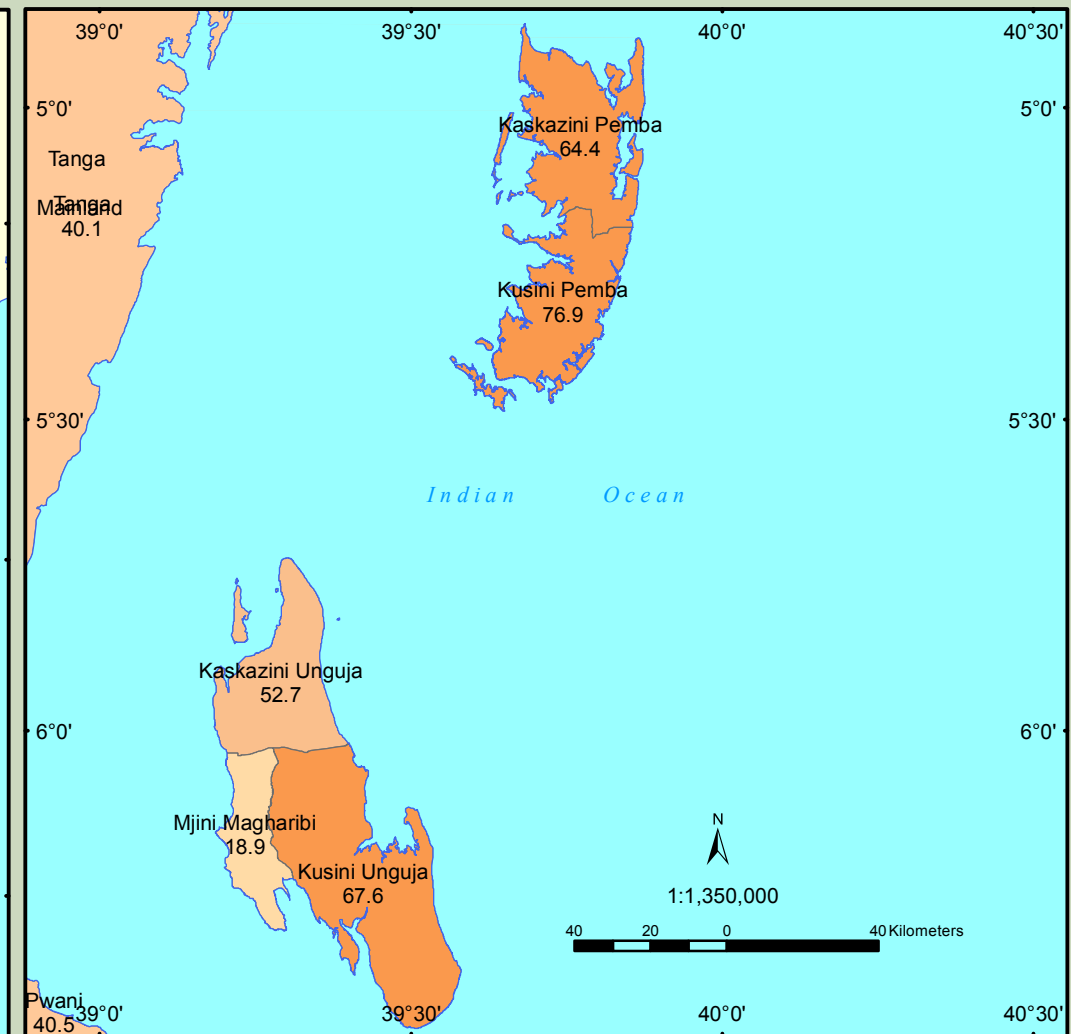
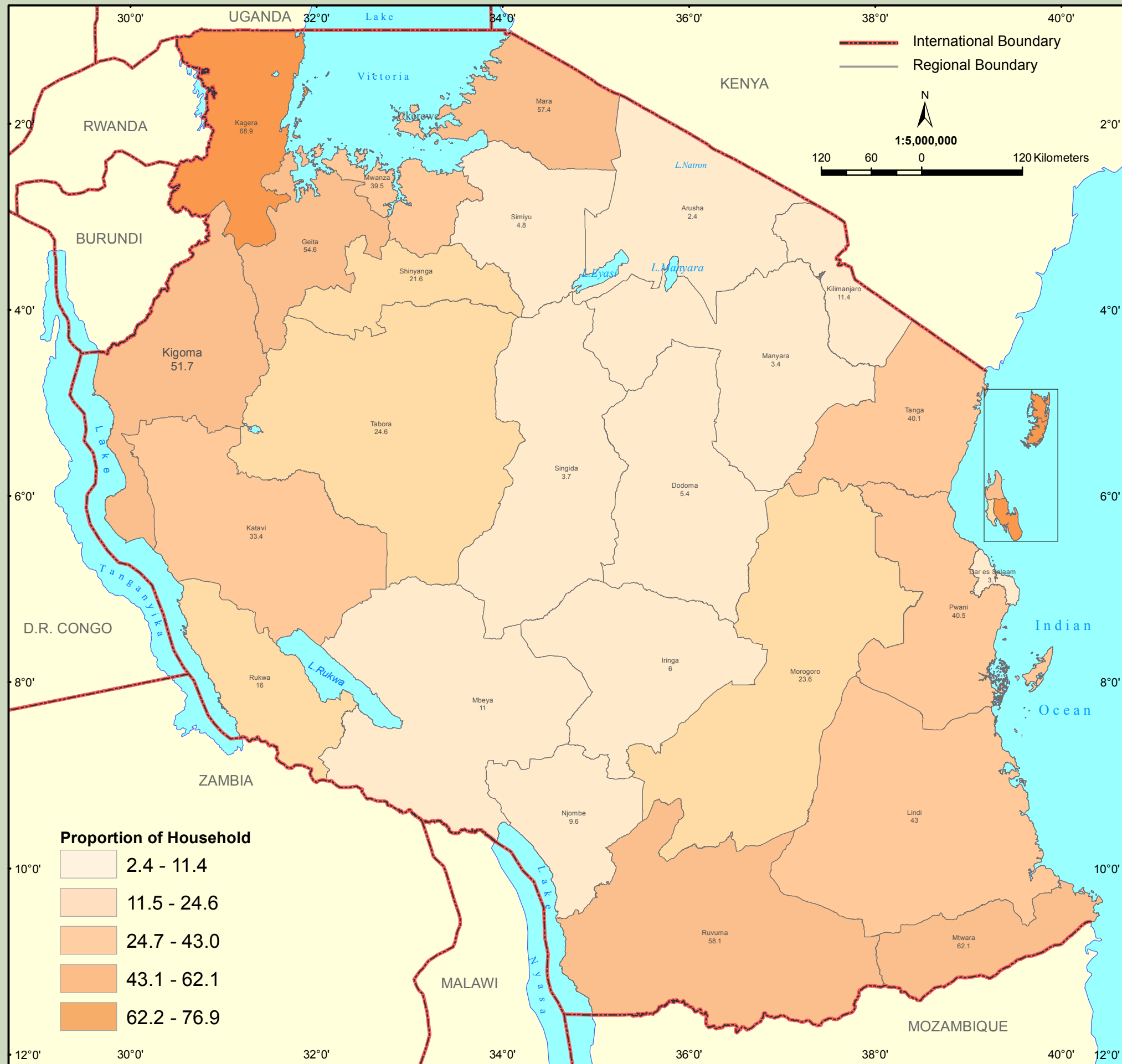


Proportion of private households growing cassava



A private household was defined as a person or group of persons who reside in the same homestead or compound but not necessarily in the same dwelling unit, having the same cooking arrangements, and are answerable to the same household head. Private households constituted about 99 percent of all households, suggesting that the remaining one percent of all households were collective households. About 26 percent (25.9) of all private households were growing cassava. Over 60 percent of the private households of Kusini Pemba (76.9), Kagera (68.9), Kusini Unguja (67.6), Kaskazini Pemba (64.4) and Mtwara (62.1) were growing cassava. On the other hand, some regions reported small proportions of private households (less than 10 percent) which were growing cassava. These regions are Arusha (2.1), Dar es Salaam (3.1), Manyara (3.4), Singida (3.7), Simiyu (4.8), Dodoma (5.4) Iringa (6.0) and Njombe (9.6).