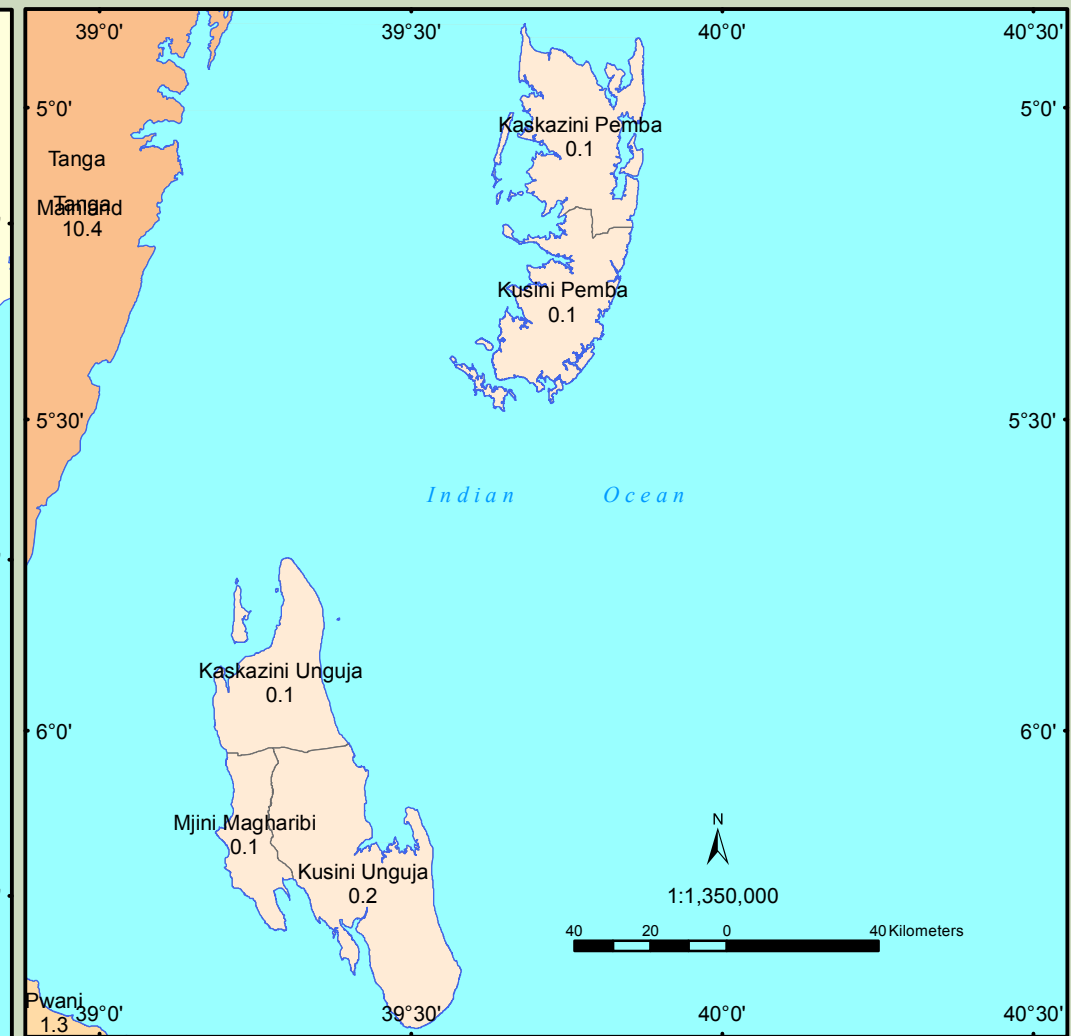
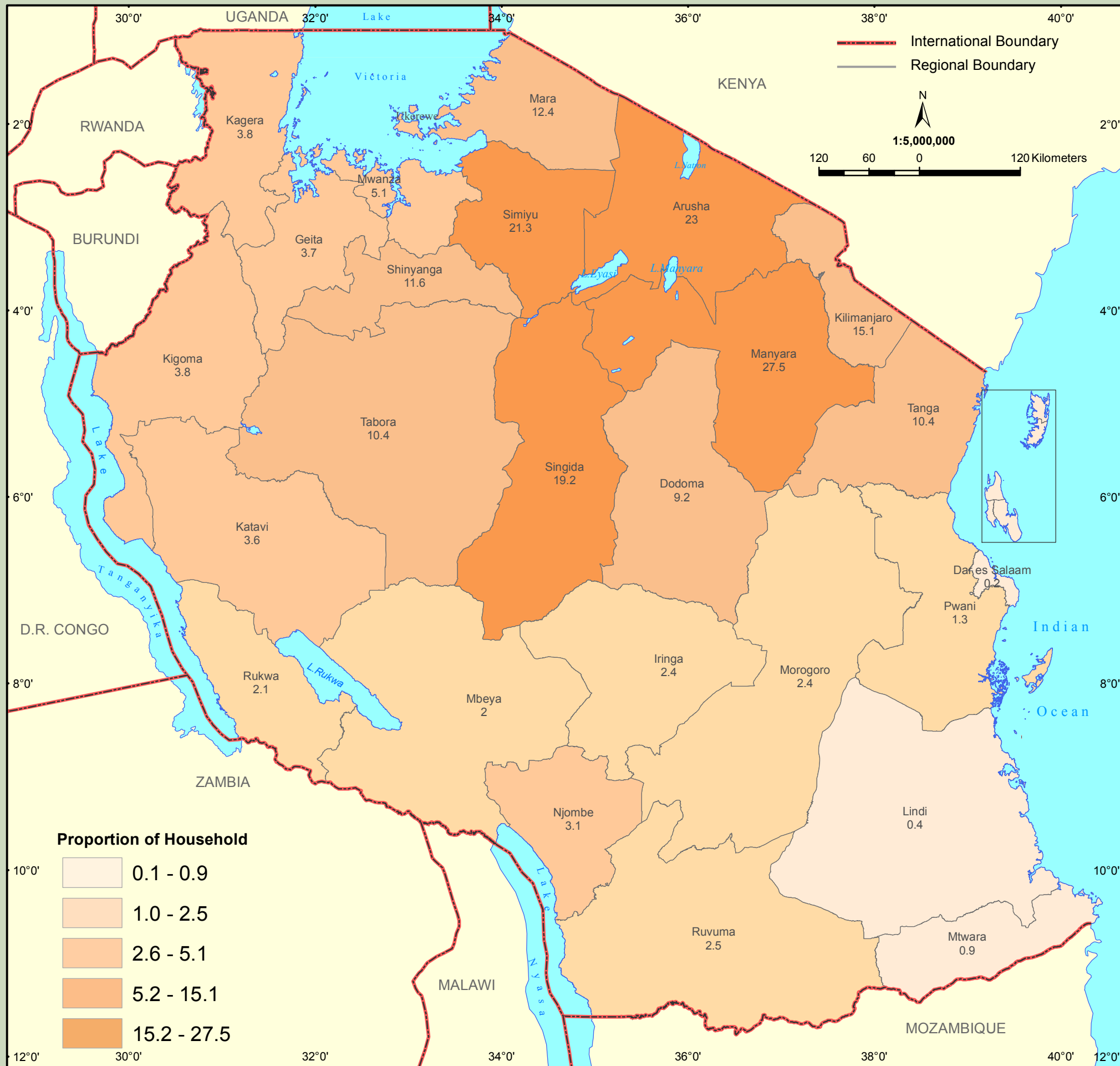


Proportion of private households engaged in raising goats



The livestock sector including poultry plays a significant role in the economy of agricultural households in Tanzania. Livestock generates considerable amount of income and determines the household economic and social status in many communities. Results from the 2012 PHC shows that about seven percent (6.9) of Tanzania's private households were rearing sheep. Rearing of sheep is not popular with most of the regions of Tanzania. Only four regions have a substantial proportion of private households that were keeping sheep. Such regions were Manyara (27.5), Arusha (23.0), Simiyu (21.3) and Singida (19.2). However, eight regions had less than one percent of households which were rearing sheep. The regions were all regions in Tanzania Zanzibar (0.1 percent except Kusini Unguja with 0.2 percent of households), Dar es Salaam (0.2), Lindi (0.4) and Mtwara (0.9). The remaining regions had between one and 16 percent of private households which were rearing sheep.