



THE UNITED REPUBLIC OF TANZANIA

**QUARTERLY GROSS DOMESTIC PRODUCT OF
TANZANIA MAINLAND**

THIRD QUARTER, 2009



National Bureau of Statistics
Ministry of Finance and Economic Affairs
Dar es Salaam
March, 2010

Table of Contents

1.0	Introduction.....	1
1.1	Economic Performance.....	1
2.0	Agriculture.....	2
3.0	Fishing	3
4.0	Mining and Quarrying	4
5.0	Manufacturing.....	4
6.0	Electricity.....	6
7.0	Construction.....	7
8.0	Wholesale and Retail Trade, Repair of Motor Vehicles, Motorcycles, Personal and Household Goods	7
9.0	Hotels and Restaurants	8
10.0	Transport and Communication	9
11.0	Financial Intermediation.....	9
12.0	Real Estates, and Business Services	9
13.0	Public Administration.....	9
14.0	Education.....	10
15.0	Health, Other Social, Community and Personal Services.....	10



List of Figures

Figure 1: Growth Rates for the Third Quarter, 2002-2009	2
Figure 2: Production/Harvest of Selected Major Food Crops During the Third Quarters of 2008 and 2009.....	3
Figure 3: Growth Rates of GVA for Mining and Quarrying, Third Quarter, 2002-2009.....	4
Figure 4: GVA at Constant 2002 Prices and Growth Rates for Manufacturing Activity, Third Quarter, 2002 – 2009.....	5
Figure 5: Index of Production for Selected Manufactured Goods, Third Quarter, 2008 – 2009.	6
Figure 6: Output Index of Wholesale and Retail Trades, Repair of Motor Vehicles, Motorcycles, Personal and Household Goods, Third Quarter, 2001 – 2009.....	8

List of Annexes

Annex 1: Gross Value Added at Constant 2001 Prices in Million Tshs by Activity	11
Annex 2: Percentage Changes of Gross Value Added at Constant 2001 Prices by Activity.....	18

QUARTERLY GROSS DOMESTIC PRODUCT THIRD QUARTER 2009

1.0 Introduction

This report presents the official Quarterly Gross Domestic Product (QGDP) estimates of Tanzania Mainland for the third quarter of 2009. The compilation of QGDP aims at facilitating frequent interventions into the economic development of the country.

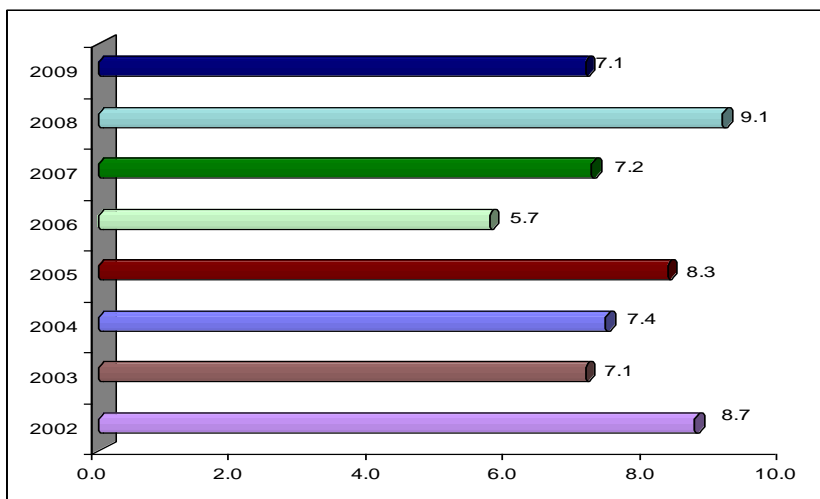
1.1 Economic Performance

In this report, the growth rates are measured through the percentage change of QGDP between the current year and the previous year. For example, the growth rate for the third quarter of the year 2009 is the percentage change between that quarter and the third quarter of 2008. However, in order to discount seasonality effects, the change has also been measured between the adjacent quarters of the same year.

The real Gross Domestic Product at market prices is estimated to have increased by 7.1 percent in the third quarter of 2009 compared to 9.1 percent in the third quarter of 2008.

In absolute terms, the QGDP for the quarter was 4,705,955 million shillings in 2009 compared to shillings 4,394,075 million shillings in 2008, (Annex 1)

Figure 1: Growth Rates for the Third Quarter, 2002-2009

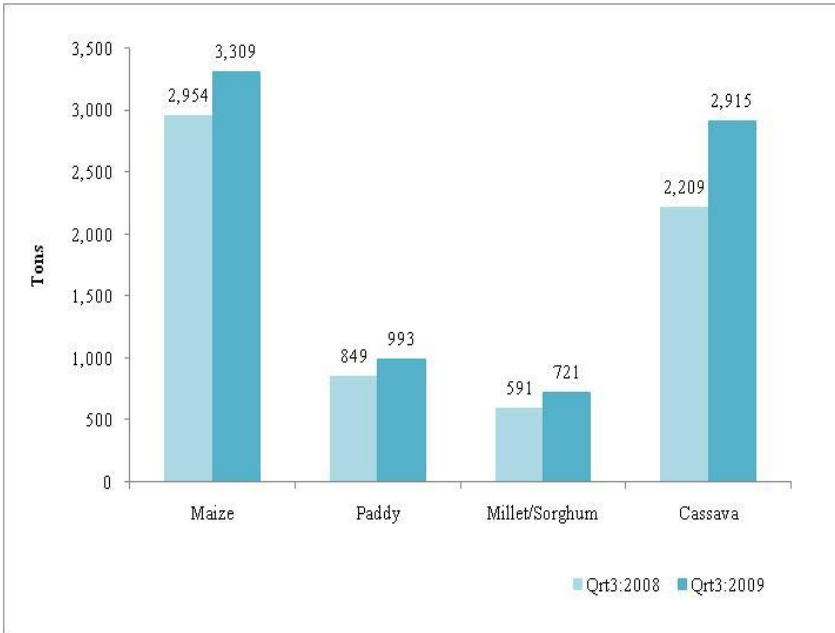


2.0 Agriculture

The activity registered a growth rate of 2.7 percent in the third quarter of 2009 compared to 4.9 percent in the third quarter of 2008.

There was an increase in production / harvest of major food crops, for instance maize production went up by 12 percent from 2,954 tonnes in the third quarter of 2008 to 3,309 tonnes produced during a similar period in 2009, paddy harvested increased from 849 tonnes in the third quarter of 2008 to 993 tonnes in the corresponding period of 2009, millet/sorghum harvested rose by 22 percent from 591 tonnes to 721 tonnes while cassava harvested increased by 32 percent from 2,209 tonnes in the third quarter of 2008 to 2,915 in a similar quarter of 2009.

Figure 2: Production/Harvest of Selected Major Food Crops During the Third Quarters of 2008 and 2009



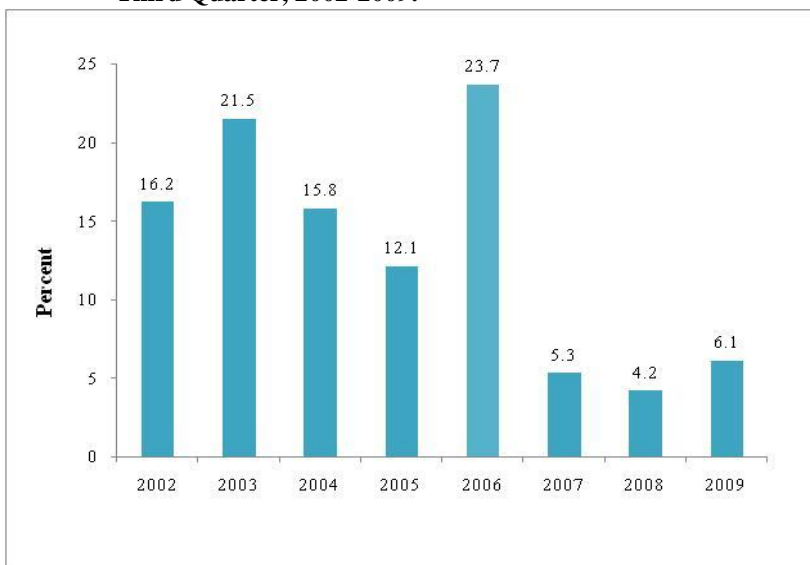
3.0 Fishing

Fishing recorded a negative growth rate of -3.7 percent in the third quarter of 2009 compared to the third quarter of 2008. This was mainly due to the decline in demand for fish and fish products in foreign markets and the government's effort to curb illegal fishing activities.

4.0 Mining and Quarrying

The activity recorded an increase in growth rate of 6.1 percent in the third quarter of 2009 compared to the third quarter of 2008. The increase between the corresponding quarters of 2007 and 2008 was 4.2 percent. The latest increase is attributed to the injection of gold from Buzwagi Gold Mine that started operation in the late June 2009 and produced more than 2,800 kg of gold during the quarter under review.

Figure 3: Growth Rates of GVA for Mining and Quarrying, Third Quarter, 2002-2009.



5.0 Manufacturing

The activity recorded a growth rate of 11.2 percent in the third quarter of 2009 compared to the third quarter of 2008. The growth between the third quarters of 2007 and 2008 was 10.3 percent.

Gross Domestic Product, Third Quarter 2009

The growth rate for this activity was due to an overall increase in the index of industrial production from 175.3 in the third quarter of 2008 to 204.6 in the third quarter 2009. Significant increases were recorded in the manufacture of tobacco, other types of food processing and production of cement such that the index of manufacturing increasing from 203 in the third quarter of 2008 to 223 in the third quarter of 2009.

Figure 4: GVA at Constant 2002 Prices and Growth Rates for Manufacturing Activity, Third Quarter, 2002 – 2009

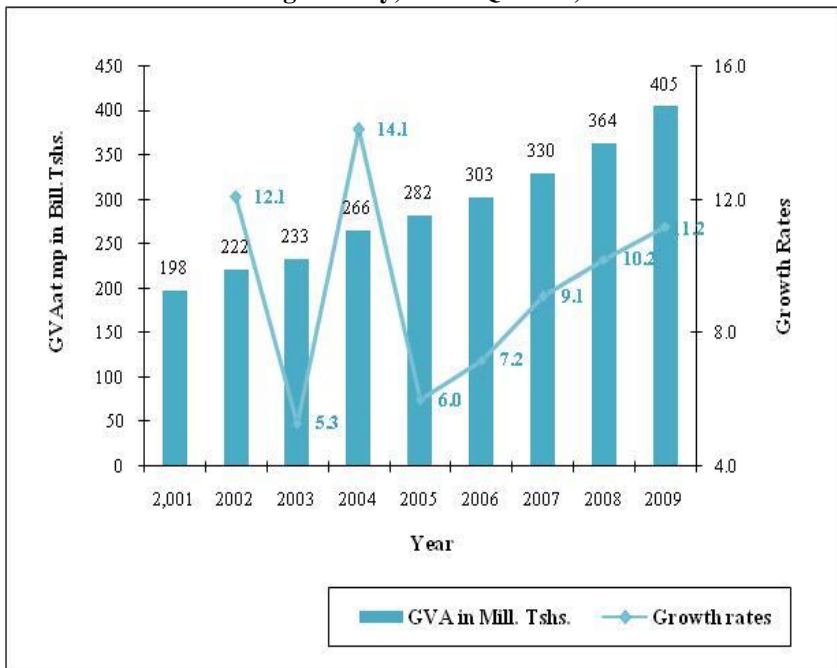
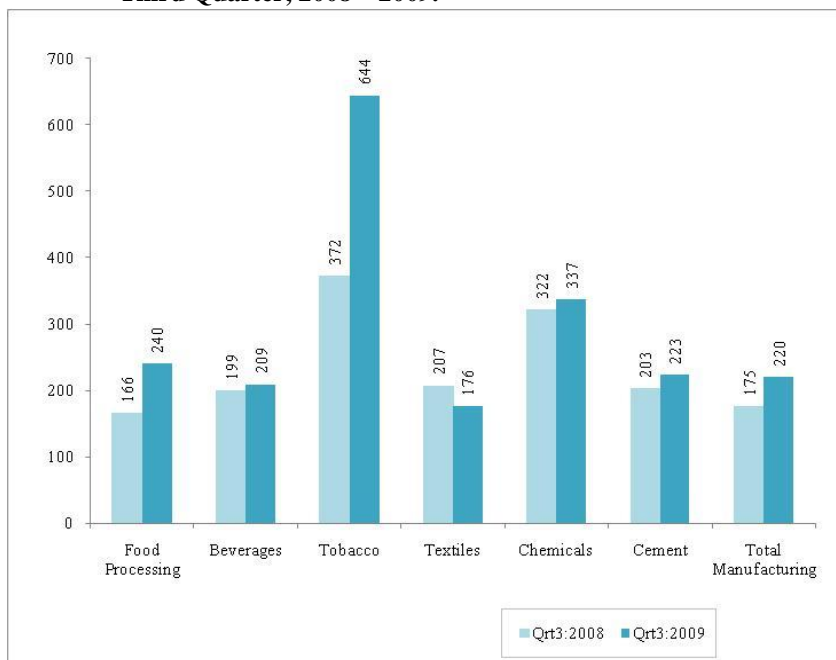


Figure 5: Index of Production for Selected Manufactured Goods, Third Quarter, 2008 – 2009.



6.0 Electricity

The growth rate for electricity was 10.6 percent between the third quarter of 2009 and the third quarter 2009 compared to the growth rate of 6.3 between the third quarters of 2007 and 2008. The performance in the latter quarter was a result of enough and sustained water levels in the hydro electric dams for power generation.

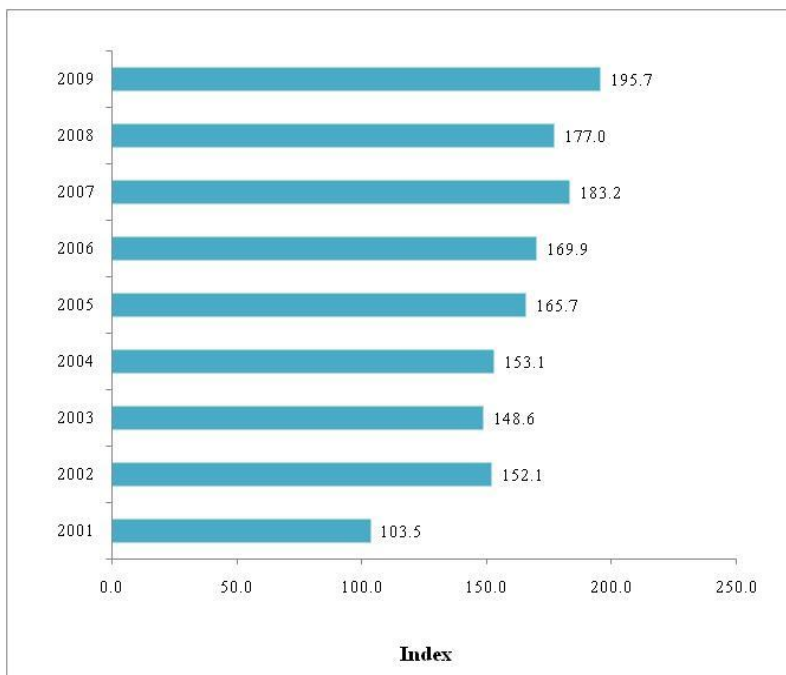
7.0 Construction

Construction activity had a growth rate of 12.7 percent between the third quarters of 2008 and 2009 compared to 33.9 percent between the third quarters of 2007 and 2008. The growth was attributed to the construction of residential and non-residential buildings, roads and bridges; and land improvement activities.

8.0 Wholesale and Retail Trade, Repair of Motor Vehicles, Motorcycles, Personal and Household Goods

This activity recorded a growth of 12.1 percent between the third quarter of 2008 and the third quarter of 2009. The growth rate between the third quarters of 2007 and 2008 was 11.9 percent. The index of deflated output for this activity as derived from trade turnovers increased from 177 in the third quarter of 2008 to 196 in the same quarter of 2009. The increase was attributed to the increase of domestic manufactured goods and imports of merchandized goods.

Figure 6: Output Index of Wholesale and Retail Trades, Repair of Motor Vehicles, Motorcycles, Personal and Household Goods, Third Quarter, 2001 – 2009



9.0 Hotels and Restaurants

Hotels and restaurants grew at a rate of 3.7 percent between the third quarters of 2008 and 2009 compared to 3.5 percent during the third quarters of 2007 and 2008. The growth is attributed to an overall increase in the index of bed occupancy. While bed occupancy index for foreigners increased from 215 in the third quarter of 2008 compared to 216 in 2009, the domestic index increased from 136 in the third quarter of 2008 compared to 147 in the reference period of 2009.

10.0 Transport and Communication

The activity recorded a growth of 14.8 percent in the third quarters of 2008 and 2009 compared to 12.1 percent in the third quarters of 2007 and 2008. The growth rate was attained following the increase in passengers and goods transported together with output of telecommunication services.

11.0 Financial Intermediation

The activity recorded a growth rate of 14.1 percent between the third quarters of 2008 and 2009 compared to 11.6 percent in the third quarters of 2007 and 2008. The performance was attributed to the increase in levels of deposits and lending by commercial banks. The deposits in commercial banks during the third quarter of 2009 amounted to 7,320,314 millions as compared to 5,306,421 million of the same period in 2008.

12.0 Real Estates, and Business Services

This activity grew at a rate of 8.1 percent between the third quarters of 2008 and 2009 compared to 7.8 percent during the third quarters of 2007 and 2008. The growth was due to an overall increase in the index of deflated turnover in business services. The quantity index of owner occupied dwellings increased from 153 in 2008 to 159 in 2009 while that of rented dwellings increased from 183 in 2008 to 200 in the year 2009.

13.0 Public Administration

The activity recorded a growth of 3.4 percent in the third quarters of 2008 and 2009 compared to 7.3 percent in the third quarters of 2007 and

2008. This was attributed to low rate of recruitment of new employees by the government.

14.0 Education

The activity recorded a growth of 11.0 percent between the third quarters of 2008 and 2009 compared to 8.4 percent attained in the third quarters of 2007 and 2008. The performance was attributed to the increased enrolment in 2009 as compared to 2008.

15.0 Health, Other Social, Community and Personal Services

The activity grew at a rate of 5.5 percent in the third quarters of 2008 and 2009 compared to 6.9 percent in the third quarters of 2007 and 2008. The performance was attributed to the decrease in number of patients attended in health facilities. However, there was an increase in the index of community, Social and personal services during the reference quarter.

Annexes

Annex 1: Gross Value Added at Constant 2001 Prices in Million Tshs by Activity

Year	Quarter	Agriculture	Fishing	Mining and Quarrying	Manufacturing	Electricity	Construction	Wholesale and Retail Trade	Hotels and Restaurants	Transport and Communication
2001		2,636,193	153,660	159,979	762,400	240,700	475,380	1,182,797	250,978	599,845
2002		2,766,479	164,049	187,000	819,200	254,084	531,740	1,281,544	267,162	640,549
2003		2,850,956	173,892	219,000	893,000	271,081	605,000	1,405,698	275,836	685,940
2004		3,017,988	185,543	254,000	977,000	290,265	683,354	1,486,931	285,732	757,732
2005		3,148,384	196,676	295,000	1,071,000	314,918	752,343	1,585,906	301,873	828,851
2006		3,268,238	206,510	341,000	1,162,000	313,252	823,650	1,736,631	314,921	900,537
2007		3,399,648	215,734	377,559	1,263,435	344,981	903,544	1,906,821	328,859	991,649
2008		3,554,488	226,521	386,998	1,388,515	364,311	998,416	2,097,503	343,658	1,099,198
2001	1	492,583	34,301	43,547	176,716	66,302	111,959	294,588	66,391	160,027
	2	759,290	43,447	42,613	189,711	55,839	128,999	285,455	55,729	153,255
	3	992,816	40,008	39,151	197,774	57,478	112,562	303,028	69,969	143,512
	4	391,504	35,904	34,667	198,198	61,082	121,859	299,726	58,890	143,051

Annex 1(Ctd): Gross Value Added at Constant 2001 Prices in Million Tshs by Activity

Year	Quarter	Agriculture	Fishing	Mining and Quarrying	Manufacturing	Electricity	Construction	Wholesale and Retail Trade	Hotels and Restaurants	Transport and Communication
2002	1	497,523	38,765	50,771	182,963	70,437	124,286	300,056	70,003	168,530
	2	789,351	48,738	48,898	188,505	58,638	141,389	305,671	61,792	160,998
	3	1,087,055	41,163	45,475	221,719	54,389	134,003	322,110	73,827	151,418
	4	392,550	35,382	41,856	226,014	70,620	132,062	353,708	61,539	159,603
2003	1	509,981	40,085	55,054	207,981	70,477	134,390	308,814	73,435	182,051
	2	807,102	47,712	56,810	206,134	67,789	170,553	314,774	63,375	178,285
	3	1,131,894	45,711	55,271	233,457	65,565	153,004	358,781	75,002	164,414
	4	401,979	40,384	51,866	245,428	67,250	147,053	423,330	64,023	161,190
2004	1	533,374	42,650	64,677	223,595	68,581	175,055	334,005	72,827	190,944
	2	877,861	47,715	66,795	222,035	71,535	177,351	324,251	65,863	183,918
	3	1,194,167	48,289	63,990	266,490	72,512	159,171	366,902	78,274	181,577
	4	412,586	46,889	58,539	264,880	77,637	171,777	461,772	68,768	201,293

Annex 1(Ctd): Gross Value Added at Constant 2001 Prices in Million Tshs by Activity

Year	Quarter	Agriculture	Fishing	Mining and Quarrying	Manufacturing	Electricity	Construction	Wholesale and Retail Trade	Hotels and Restaurants	Transport and Communication
2005	1	551,413	49,932	69,842	243,874	76,309	166,858	349,353	75,357	204,287
	2	909,054	54,038	68,951	249,882	75,657	186,394	353,980	69,285	212,471
	3	1,263,261	44,881	71,746	282,440	77,480	206,515	392,613	80,348	207,326
	4	424,656	47,824	84,461	294,804	85,472	192,576	489,960	76,883	204,767
2006	1	569,774	50,186	82,277	276,973	77,231	209,297	357,321	75,533	250,545
	2	969,914	57,473	82,619	277,031	78,163	206,046	428,678	71,553	225,514
	3	1,313,328	53,826	88,770	302,646	78,974	204,600	430,601	84,213	208,575
	4	415,222	45,025	87,334	305,350	78,883	203,707	520,031	83,622	215,903
2007	1	588,699	57,198	96,729	289,767	84,550	221,580	415,287	78,452	214,010
	2	1,004,157	53,397	89,625	304,378	88,118	203,139	450,040	74,555	242,174
	3	1,383,290	51,535	93,475	330,300	85,030	217,387	463,538	89,452	262,449
	4	423,503	53,604	97,730	338,989	87,283	261,438	577,956	86,400	273,016

Annex 1(Ctd): Gross Value Added at Constant 2001 Prices in Million Tshs by Activity

Year	Quarter	Agriculture	Fishing	Mining and Quarrying	Manufacturing	Electricity	Construction	Wholesale and Retail Trade	Hotels and Restaurants	Transport and Communication
2008	1	629,621	46,104	96,499	311,186	86,930	238,076	454,484	82,089	249,335
	2	1,055,802	60,497	104,698	319,993	86,340	198,573	501,851	77,333	273,476
	3	1,450,879	66,986	97,428	364,041	90,367	291,088	518,913	92,603	294,242
	4	418,186	52,935	88,373	393,295	100,673	270,679	622,255	91,634	282,146
2009	1	631,535	49,746	57,624	338,626	92,285	261,671	496,348	85,648	282,819
	2	1,082,080	64,670	69,880	355,550	94,379	210,325	544,627	79,516	317,129
	3	1,490,700	64,504	103,355	404,789	99,940	327,962	581,611	96,072	337,934

Annex 1(Ctd): Gross Value Added at Constant 2001 Prices in Million Tshs by Activity

Year	Quarter	Financial Inter-mediation	Real Estate	Public Admi-nistration	Education	Other Services	FISIM	All indust. at Basic Prices	Taxes on Products	GDP at Market Prices	GDP, Seasonally Adjusted
2001		140,000	936,440	640,649	188,733	200,520	-80,000	8,488,274	612,000	9,100,274	
2002		154,108	1,003,260	699,561	202,000	212,515	-87,000	9,096,251	655,926	9,752,177	
2003		170,643	1,068,732	766,760	207,606	225,372	-97,154	9,722,362	701,372	10,423,734	
2004		184,775	1,141,014	871,169	215,910	238,831	-106,931	10,483,313	756,422	11,239,735	
2005		204,694	1,226,790	970,786	224,547	253,337	-119,497	11,255,608	812,482	12,068,090	
2006		228,000	1,316,000	1,033,488	235,774	270,581	-137,287	12,013,295	867,868	12,881,163	
2007		251,280	1,408,120	1,102,951	248,742	289,140	-158,292	12,874,171	927,751	13,801,922	
2008		281,120	1,508,097	1,180,158	265,905	309,499	-175,704	13,828,683	999,664	14,828,347	
2001	1	35,871	239,566	157,063	47,743	47,816	-21,431	1,953,043	145,429	2,098,472	2,247,907
	2	35,070	224,232	158,075	47,348	49,753	-20,979	2,207,836	139,048	2,346,884	2,284,530
	3	36,613	229,894	160,659	47,429	51,102	-21,731	2,460,264	165,157	2,625,422	2,280,947
	4	32,445	242,748	164,852	46,214	51,849	-15,859	1,867,131	162,365	2,029,496	2,283,691
2002	1	45,762	248,902	169,236	51,975	52,258	-26,852	2,044,617	146,432	2,191,048	2,371,836
	2	38,951	239,979	172,730	50,481	52,740	-21,994	2,336,868	149,483	2,486,351	2,431,092
	3	38,042	248,590	176,642	50,122	53,377	-21,074	2,676,858	176,818	2,853,676	2,456,074
	4	31,353	265,790	180,952	49,422	54,139	-17,081	2,037,909	183,194	2,221,102	2,491,443

Annex 1(Ctd): Gross Value Added at Constant 2001 Prices in Million Tshs by Activity

Year	Quarter	Financial Intermediation	Real Estate	Public Administration	Education	Other Services	FISIM	All indust. at Basic Prices	Taxes on Products	GDP at Market Prices	GDP, Seasonally Adjusted
2003	1	38,560	262,655	184,553	52,672	55,045	-21,365	2,154,386	163,228	2,317,614	2,505,779
	2	43,497	256,269	188,487	52,019	56,129	-24,155	2,484,779	157,775	2,642,555	2,602,000
	3	46,314	266,607	193,641	52,146	56,870	-26,245	2,872,432	184,520	3,056,952	2,611,187
	4	42,272	283,202	200,080	50,769	57,328	-25,389	2,210,764	195,849	2,406,613	2,708,481
2004	1	44,335	279,483	207,126	55,305	58,114	-25,447	2,324,625	170,543	2,495,169	2,759,797
	2	45,559	258,820	214,159	53,576	59,191	-25,664	2,642,965	164,173	2,807,139	2,753,934
	3	48,447	282,578	221,307	54,192	60,247	-27,817	3,070,328	212,221	3,282,548	2,838,856
	4	46,434	320,133	228,577	52,837	61,279	-28,003	2,445,395	209,485	2,654,879	2,900,410
2005	1	45,788	301,237	234,947	57,167	62,036	-26,874	2,461,526	180,086	2,641,612	2,809,655
	2	53,074	278,787	239,830	55,776	62,756	-31,315	2,838,621	185,135	3,023,755	2,945,661
	3	49,793	324,071	245,181	56,558	63,697	-29,603	3,336,307	218,653	3,554,960	3,162,991
	4	56,039	322,696	250,827	55,046	64,847	-31,705	2,619,154	228,608	2,847,763	3,138,085
2006	1	55,605	347,253	253,715	60,940	66,011	-33,236	2,699,426	199,610	2,899,036	3,528,468
	2	53,394	288,393	255,925	58,888	67,181	-32,293	3,088,480	202,586	3,291,066	3,033,429
	3	59,622	350,695	259,470	59,548	68,227	-34,968	3,528,126	229,454	3,757,581	3,137,878
	4	59,378	329,659	264,379	56,398	69,162	-36,789	2,697,262	236,218	2,933,480	3,240,621

Gross Domestic Product, Third Quarter 2009

Annex 1(Ctd): Gross Value Added at Constant 2001 Prices in Million Tshs by Activity

Year	Quarter	Financial Intermediation	Real Estate	Public Administration	Education	Other Services	FISIM	All indust. at Basic Prices	Taxes on Products	GDP at Market Prices	GDP, Seasonally Adjusted
2007	1	42,716	360,377	269,274	65,280	70,318	-24,830	2,829,407	199,041	3,028,448	3,360,376
	2	59,347	332,727	273,188	61,853	71,610	-37,440	3,270,869	212,824	3,483,692	3,482,372
	3	70,887	360,161	277,724	61,422	72,931	-45,248	3,774,332	252,698	4,027,030	3,468,744
	4	78,330	354,855	282,766	60,187	74,281	-50,774	2,999,564	263,188	3,262,752	3,499,095
2008	1	50,735	383,618	288,576	66,396	75,587	-31,150	3,028,084	216,218	3,244,302	3,705,400
	2	67,102	357,342	294,747	66,342	76,781	-41,802	3,499,075	237,263	3,736,338	3,688,240
	3	79,120	388,249	298,069	66,592	77,973	-49,706	4,126,846	267,230	4,394,075	3,763,288
	4	84,162	378,888	298,765	66,574	79,159	-53,047	3,174,678	278,953	3,453,631	3,828,128
2009	1	54,750	418,607	301,013	74,012	80,148	-33,563	3,191,270	235,194	3,426,464	3,892,967
	2	77,698	381,652	304,852	74,013	81,096	-48,884	3,688,583	241,633	3,930,216	3,957,806
	3	90,313	419,636	308,206	73,916	82,243	-55,762	4,425,420	280,535	4,705,955	4,022,646

Annex 2: Percentage Changes of Gross Value Added at Constant 2001 Prices by Activity

Year	Quarter	Agriculture	Fishing	Mining and Quarrying	Manufacturing	Electricity	Construction	Wholesale and Retail Trade	Hotels and Restaurants	Transport and Communication
2001										
2002		4.9	6.8	16.9	7.5	5.6	11.9	8.3	6.4	6.8
2003		3.1	6.0	17.1	9.0	6.7	13.8	9.7	3.2	7.1
2004		5.9	6.7	16.0	9.4	7.1	13.0	5.8	3.6	10.5
2005		4.3	6.0	16.1	9.6	8.5	10.1	6.7	5.6	9.4
2006		3.8	5.0	15.6	8.5	-0.5	9.5	9.5	4.3	8.6
2007		4.0	4.5	10.7	8.7	10.1	9.7	9.8	4.4	10.1
2008		4.6	5.0	2.5	9.9	5.6	10.5	10.0	4.5	10.8
2002	1	1.0	13.0	16.6	3.5	6.2	11.0	1.9	5.4	5.3
	2	4.0	12.2	14.7	-0.6	5.0	9.6	7.1	10.9	5.1
	3	9.5	2.9	16.2	12.1	-5.4	19.0	6.3	5.5	5.5
	4	0.3	-1.5	20.7	14.0	15.6	8.4	18.0	4.5	11.6
	Annual	4.9	6.8	16.9	7.5	5.6	11.9	8.3	6.4	6.8

Annex 2 (Ctd): Percentage Changes of Gross Value Added at Constant 2001 Prices by Activity

Year	Quarter	Agriculture	Fishing	Mining and Quarrying	Manufacturing	Electricity	Construction	Wholesale and Retail Trade	Hotels and Restaurants	Transport and Communication
2003	1	2.5	3.4	8.4	13.7	0.1	8.1	2.9	4.9	8.0
	2	2.2	-2.1	16.2	9.4	15.6	20.6	3.0	2.6	10.7
	3	4.1	11.0	21.5	5.3	20.5	14.2	11.4	1.6	8.6
	4	2.4	14.1	23.9	8.6	-4.8	11.4	19.7	4.0	1.0
	Annual	3.1	6.0	17.1	9.0	6.7	13.8	9.7	3.2	7.1
2004	1	4.6	6.4	17.5	7.5	-2.7	30.3	8.2	-0.8	4.9
	2	8.8	0.0	17.6	7.7	5.5	4.0	3.0	3.9	3.2
	3	5.5	5.6	15.8	14.1	10.6	4.0	2.3	4.4	10.4
	4	2.6	16.1	12.9	7.9	15.4	16.8	9.1	7.4	24.9
	Annual	5.9	6.7	16.0	9.4	7.1	13.0	5.8	3.6	10.5
2005	1	3.4	17.1	8.0	9.1	11.3	-4.7	4.6	3.5	7.0
	2	3.6	13.3	3.2	12.5	5.8	5.1	9.2	5.2	15.5
	3	5.8	-7.1	12.1	6.0	6.9	29.7	7.0	2.7	14.2
	4	2.9	2.0	44.3	11.3	10.1	12.1	6.1	11.8	1.7
	Annual	4.3	6.0	16.1	9.6	8.5	10.1	6.7	5.6	9.4

Annex 2 (Ctd): Percentage Changes of Gross Value Added at Constant 2001 Prices by Activity

Year	Quarter	Agriculture	Fishing	Mining and Quarrying	Manufacturing	Electricity	Construction	Wholesale and Retail Trade	Hotels and Restaurants	Transport and Communication
2006	1	3.3	0.5	17.8	13.6	1.2	25.4	2.3	0.2	22.6
	2	6.7	6.4	19.8	10.9	3.3	10.5	21.1	3.3	6.1
	3	4.0	19.9	23.7	7.2	1.9	-0.9	9.7	4.8	0.6
	4	-2.2	-5.9	3.4	3.6	-7.7	5.8	6.1	8.8	5.4
	Annual	3.8	5.0	15.6	8.5	-0.5	9.5	9.5	4.3	8.6
2007	1	3.3	14.0	17.6	4.6	9.5	5.9	16.2	3.9	-14.6
	2	3.5	-7.1	8.5	9.9	12.7	-1.4	5.0	4.2	7.4
	3	5.3	-4.3	5.3	9.1	7.7	6.2	7.6	6.2	25.8
	4	2.0	19.1	11.9	11.0	10.6	28.3	11.1	3.3	26.5
	Annual	4.0	4.5	10.7	8.7	10.1	9.7	9.8	4.4	10.1
2008	1	7.0	-19.4	-0.2	7.4	2.8	7.4	9.4	4.6	16.5
	2	5.1	13.3	16.8	5.1	-2.0	-2.2	11.5	3.7	12.9
	3	4.9	30.0	4.2	10.2	6.3	33.9	11.9	3.5	12.1
	4	-1.3	-1.2	-9.6	16.0	15.3	3.5	7.7	6.1	3.3
	Annual	4.6	5.0	2.5	9.9	5.6	10.5	10.0	4.5	10.8

Gross Domestic Product, Third Quarter 2009

Annex 2 (Ctd): Percentage Changes of Gross Value Added at Constant 2001 Prices by Activity

Year	Quarter	Agriculture	Fishing	Mining and Quarrying	Manufacturing	Electricity	Construction	Wholesale and Retail Trade	Hotels and Restaurants	Transport and Communication
2009	1	0.3	7.9	-40.3	8.8	6.2	9.9	9.2	4.3	13.4
	2	2.5	6.9	-33.3	11.1	9.3	5.9	8.5	2.8	16.0
	3	2.7	-3.7	6.1	11.2	10.6	12.7	12.1	3.7	14.8

Annex 2 (Ctd): Percentage Changes of Gross Value Added at Constant 2001 Prices by Activity

Year	Quarter	Financial Inter-mediation	Real Estate and Business Services	Public Admi-nistration	Education	Other Services	FISIM	All Indust. at Basic Prices	Taxes on Products	GDP at Market Prices	GDP, Seasonally Adjusted
2001											
2002		10.1	7.1	9.2	7.0	6.0	8.8	7.2	7.2	7.2	
2003		10.7	6.5	9.6	2.8	6.0	11.7	6.9	6.9	6.9	
2004		8.3	6.8	13.6	4.0	6.0	10.1	7.8	7.8	7.8	
2005		10.8	7.5	11.4	4.0	6.1	11.8	7.4	7.4	7.4	
2006		11.4	7.3	6.5	5.0	6.8	14.9	6.7	6.8	6.7	
2007		10.2	7.0	6.7	5.5	6.9	15.3	7.2	6.9	7.1	
2008		11.9	7.1	7.0	6.9	7.0	11.0	7.4	7.8	7.4	
2002	1	27.6	3.9	7.8	8.9	9.3	25.3	4.7	0.7	4.4	3.9
	2	11.1	7.0	9.3	6.6	6.0	4.8	5.8	7.5	5.9	2.5
	3	3.9	8.1	9.9	5.7	4.5	-3.0	8.8	7.1	8.7	1.0
	4	-3.4	9.5	9.8	6.9	4.4	7.7	9.1	12.8	9.4	1.4
	Annual	10.1	7.1	9.2	7.0	6.0	8.8	7.2	7.2	7.2	

Annex 2 (Ctd): Percentage Changes of Gross Value Added at Constant 2001 Prices by Activity

Year	Quarter	Financial Inter-mediation	Real Estate and Business Services	Public Admi-nistration	Education	Other Services	FISIM	All Indust. at Basic Prices	Taxes on Products	GDP at Market Prices	GDP, Seasonally Adjusted
2003	1	-15.7	5.5	9.1	1.3	5.3	-20.4	5.4	11.5	5.8	0.6
	2	11.7	6.8	9.1	3.0	6.4	9.8	6.3	5.5	6.3	3.8
	3	21.7	7.2	9.6	4.0	6.5	24.5	7.3	4.4	7.1	0.4
	4	34.8	6.6	10.6	2.7	5.9	48.6	8.5	6.9	8.4	3.7
	Annual	10.7	6.5	9.6	2.8	6.0	11.7	6.9	6.9	6.9	
2004	1	15.0	6.4	12.2	5.0	5.6	19.1	7.9	4.5	7.7	1.9
	2	4.7	1.0	13.6	3.0	5.5	6.2	6.4	4.1	6.2	-0.2
	3	4.6	6.0	14.3	3.9	5.9	6.0	6.9	15.0	7.4	3.1
	4	9.8	13.0	14.2	4.1	6.9	10.3	10.6	7.0	10.3	2.2
	Annual	8.3	6.8	13.6	4.0	6.0	10.1	7.8	7.8	7.8	
2005	1	3.3	7.8	13.4	3.4	6.7	5.6	5.9	5.6	5.9	-3.1
	2	16.5	7.7	12.0	4.1	6.0	22.0	7.4	12.8	7.7	4.8
	3	2.8	14.7	10.8	4.4	5.7	6.4	8.7	3.0	8.3	7.4
	4	20.7	0.8	9.7	4.2	5.8	13.2	7.1	9.1	7.3	-0.8
	Annual	10.8	7.5	11.4	4.0	6.1	11.8	7.4	7.4	7.4	

Gross Domestic Product, Third Quarter 2009

Annex 2 (Ctd): Percentage Changes of Gross Value Added at Constant 2001 Prices by Activity

Year	Quarter	Financial Intermediation	Real Estate and Business Services	Public Administration	Education	Other Services	FISIM	All Indust. at Basic Prices	Taxes on Products	GDP at Market Prices	GDP, Seasonally Adjusted
2006	1	21.4	15.3	8.0	6.6	6.4	23.7	9.7	10.8	9.7	12.4
	2	0.6	3.4	6.7	5.6	7.1	3.1	8.8	9.4	8.8	-14.0
	3	19.7	8.2	5.8	5.3	7.1	18.1	5.7	4.9	5.7	3.4
	4	6.0	2.2	5.4	2.5	6.7	16.0	3.0	3.3	3.0	3.3
	Annual	11.4	7.3	6.5	5.0	6.8	14.9	6.7	6.8	6.7	
2007	1	-23.2	3.8	6.1	7.1	6.5	-25.3	4.8	-0.3	4.5	3.7
	2	11.1	15.4	6.7	5.0	6.6	15.9	5.9	5.1	5.9	3.6
	3	18.9	2.7	7.0	3.1	6.9	29.4	7.0	10.1	7.2	-0.4
	4	31.9	7.6	7.0	6.7	7.4	38.0	11.2	11.4	11.2	0.9
	Annual	10.2	7.0	6.7	5.5	6.9	15.3	7.2	6.9	7.1	
2008	1	18.8	6.4	7.2	1.7	7.5	25.5	7.0	8.6	7.1	5.9
	2	13.1	7.4	7.9	7.3	7.2	11.7	7.0	11.5	7.3	-0.5
	3	11.6	7.8	7.3	8.4	6.9	9.9	9.3	5.8	9.1	2.0
	4	7.4	6.8	5.7	10.6	6.6	4.5	5.8	6.0	5.9	1.7
	Annual	11.9	7.1	7.0	6.9	7.0	11.0	7.4	7.8	7.4	

Annex 2 (Ctd): Percentage Changes of Gross Value Added at Constant 2001 Prices by Activity

Year	Quarter	Financial Intermediation	Real Estate and Business Services	Public Administration	Education	Other Services	FISIM	All Indust. at Basic Prices	Taxes on Products	GDP at Market Prices	GDP, Seasonally Adjusted
2009	1	7.9	9.1	4.3	11.5	6.0	7.7	5.4	8.8	5.6	1.7
	2	15.8	6.8	3.4	11.6	5.6	16.9	5.4	1.8	5.2	1.7
	3	14.1	8.1	3.4	11.0	5.5	12.2	7.2	5.0	7.1	1.6

National Bureau of Statistics

Vision

To be the authoritative source of statistical information pertaining to socio-economic conditions in the country, an institution able to provide such information most effectively, a point of reference for statistical methodologies and standards.

Mission

To facilitate planning and decision making within the government and the business community, to stimulate research and inform public debate through the provision of relevant, reliable and timely statistics and a quality statistical service in general.