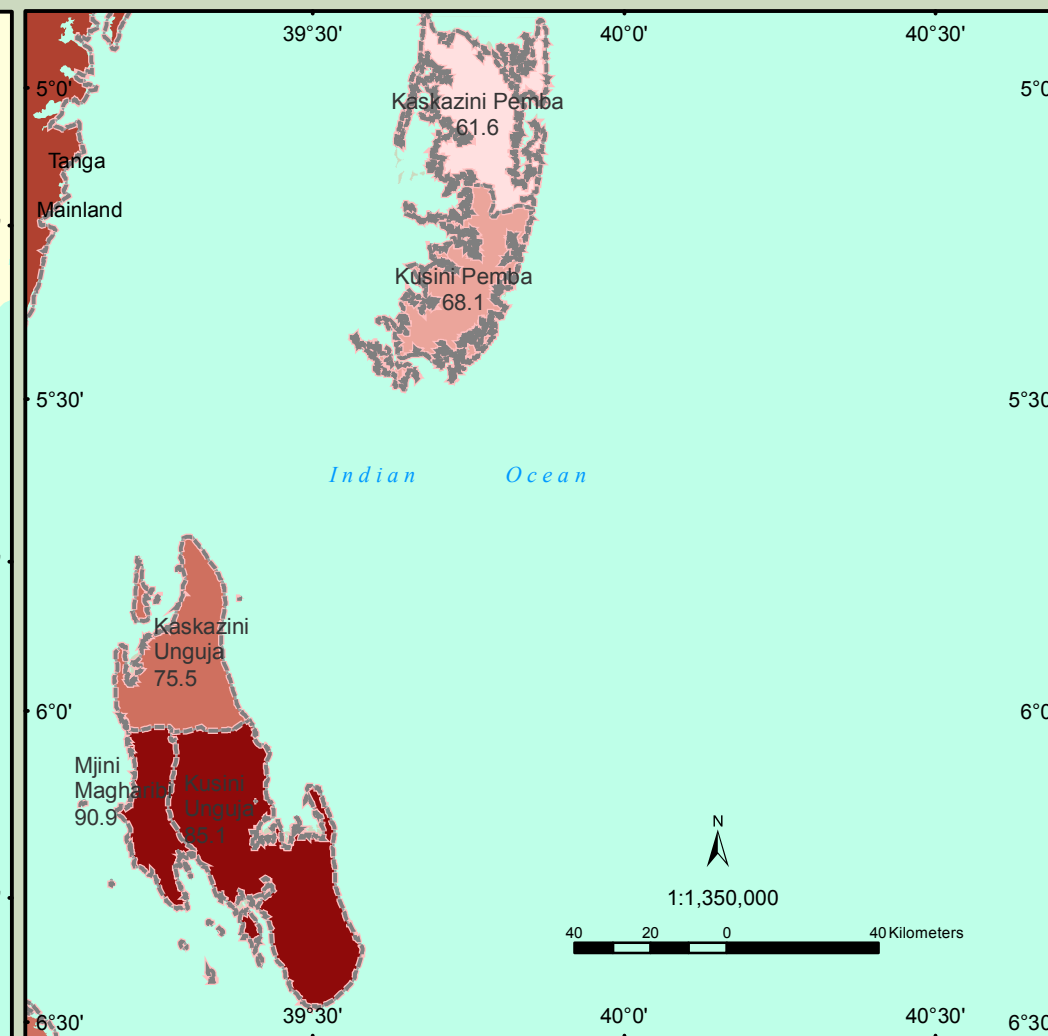
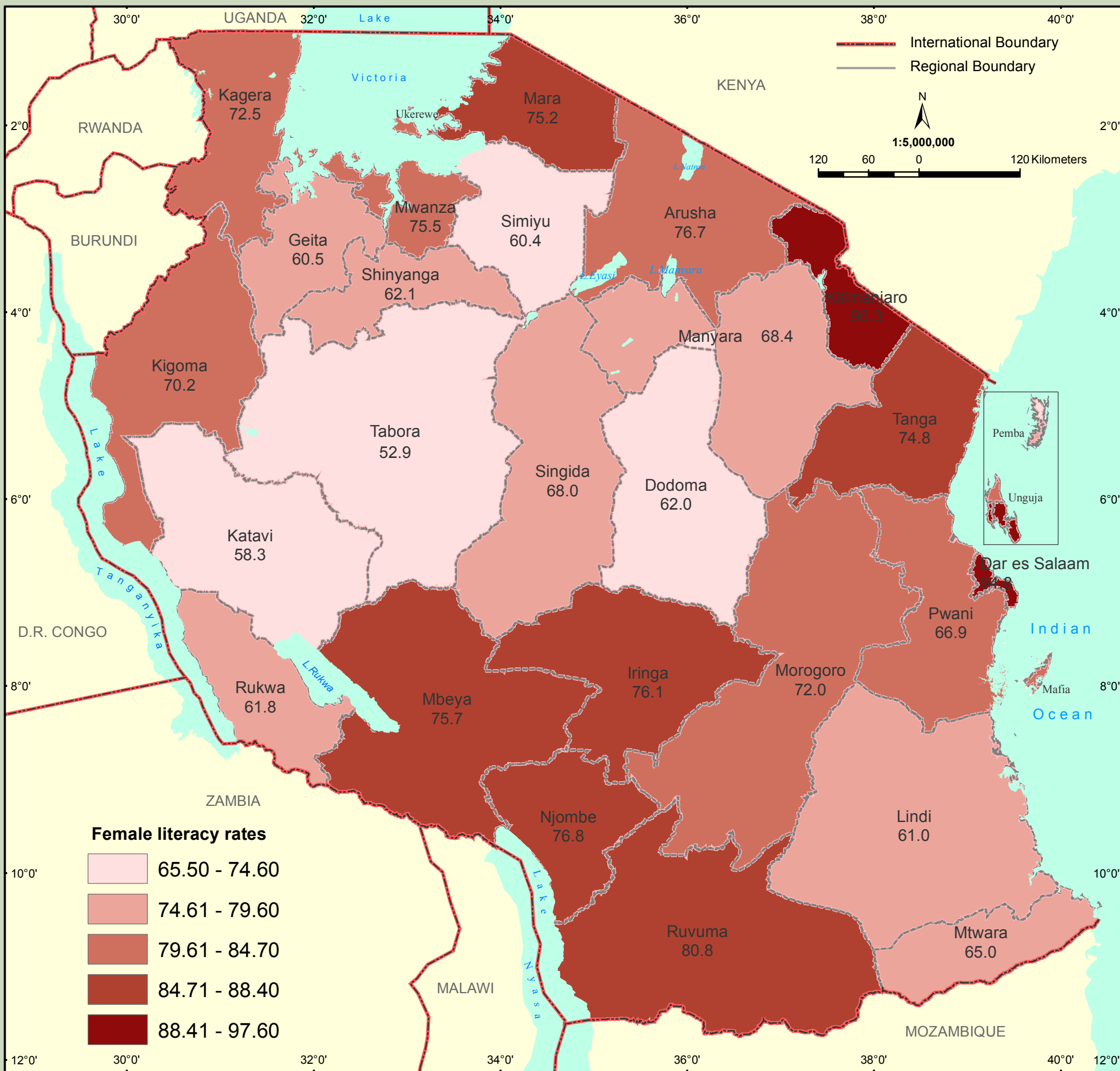


## Distribution of the female population 15 years and above by literacy



The measure of literacy is obtained by calculating the literacy rate as the percentage of a specified population, which is literate in specified language(s). At the national level, 73.3 percent of the female population was found to be literate. Five regions were recorded to have high percentages of females who were literate. Dar es Salaam recorded the highest proportion of females who were literate (94.8 percent). It was followed by Mjini Magharibi (90.9 percent), Kilimanjaro (90.3 percent), Kusunji Unguja (85.1 percent) and Ruvuma (80.8 percent). Regions which recorded lower than 70 percent of females who were literate are Tabora (52.9 percent), Katavi (58.3 percent), Simiyu (60.4 percent), Geita (60.5 percent), Lindi (61 percent), Kaskazini Pemba (61.6 percent), Rukwa (61.8 percent), Dodoma (62 percent), Pwani (66.9 percent) and Kusunji Pemba (68.1 percent).