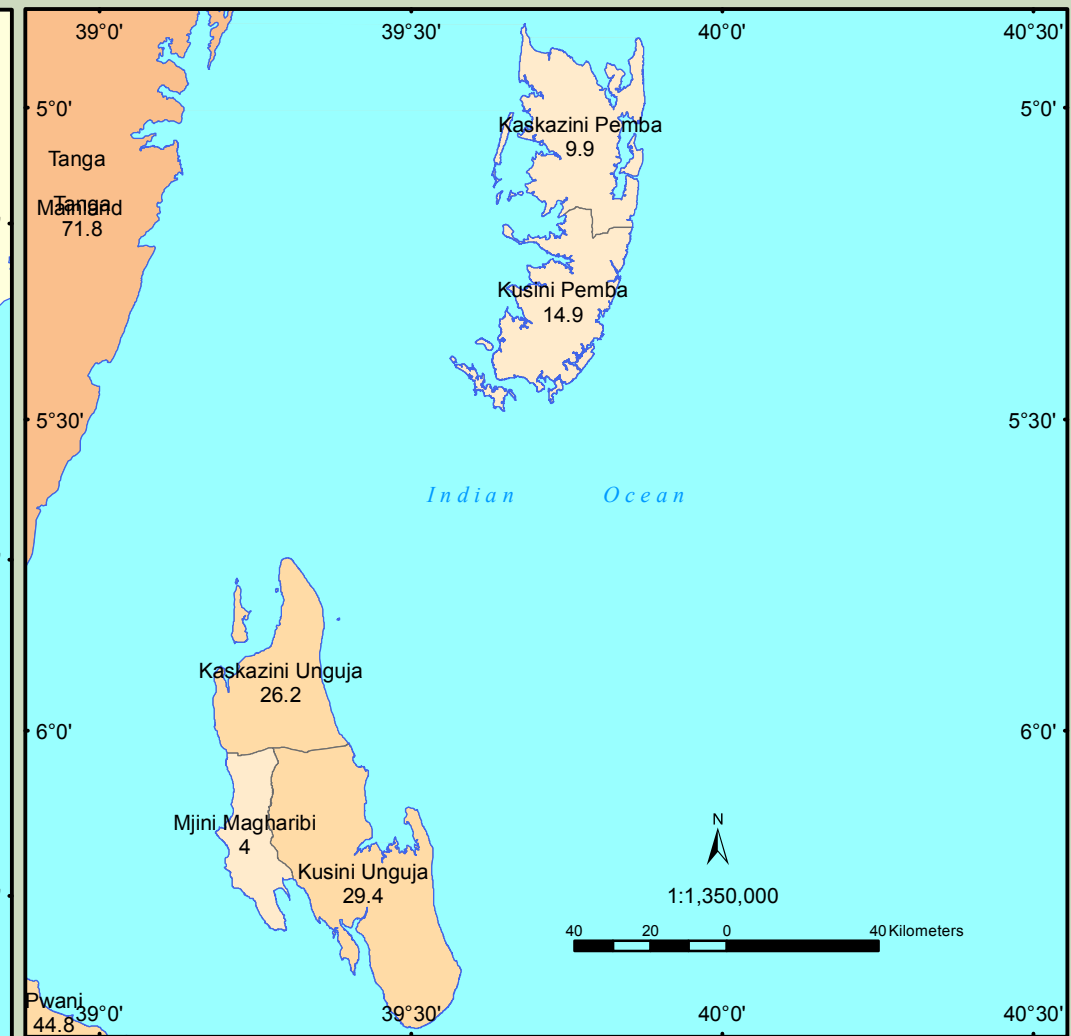
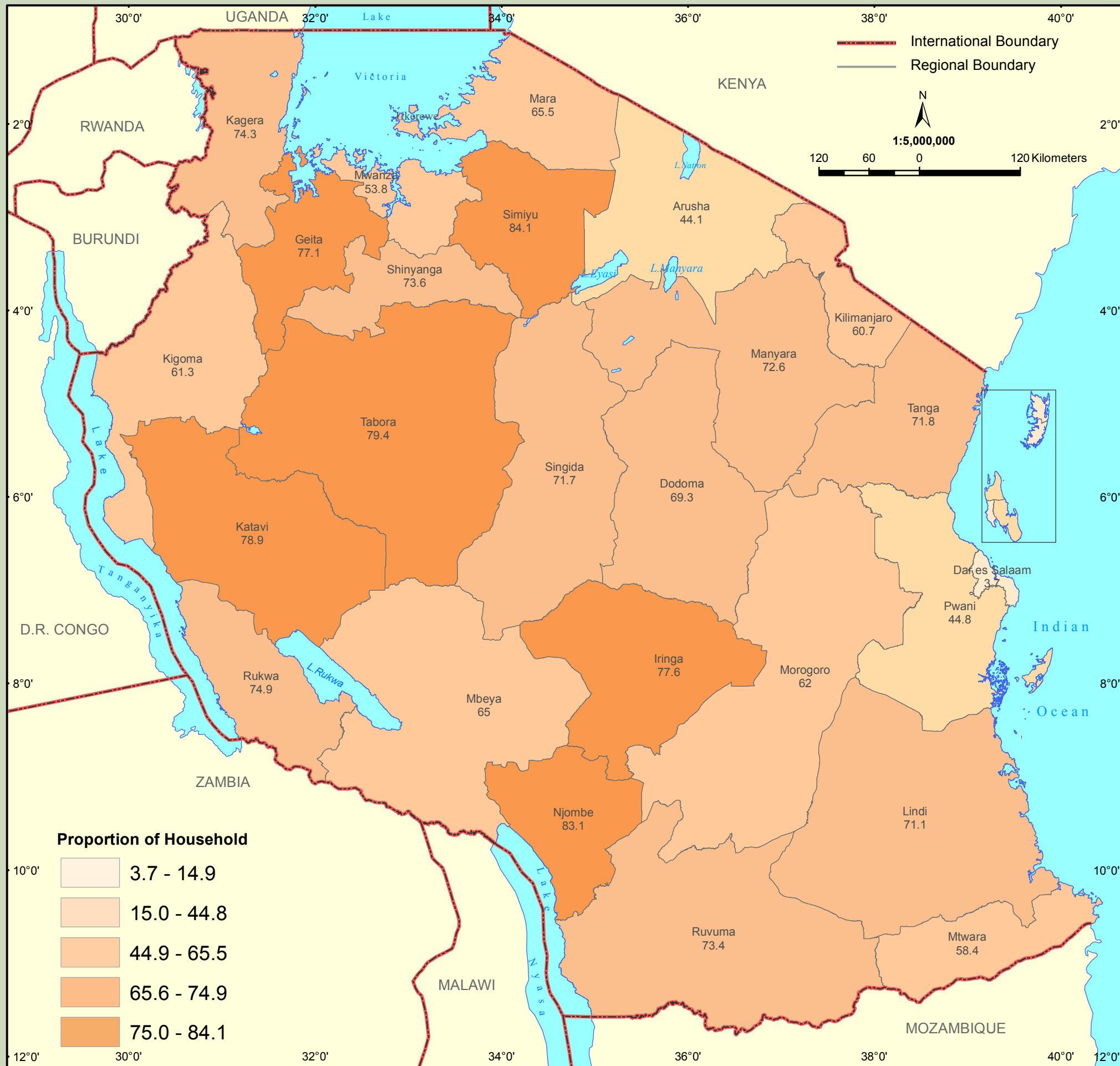


Proportion of private households growing maize



According to 2012 PHC, a private household was defined as a person or group of persons who reside in the same homestead or compound but not necessarily in the same dwelling unit, having the same cooking arrangements, and are answerable to the same household head. Private households constituted about 99 percent of all households, suggesting that the remaining one percent of all households were collective households. About 58 percent (57.9) of all private households were growing maize. Dar es Salaam Region (3.7) and Mjini Magharibi Region (4.0), predominantly urban and non-agricultural, had the lowest proportion of private households that were growing maize. Other regions which had rural characteristics but were the least maize growing regions were Kaskazini Pemba (9.9), Kusini Pemba (14.9), Kaskazini Unguja (26.2) and Kusini Unguja (29.4). Apart from Arusha Region which had about 44 percent of the region's households, the remaining regions had more than 50 percent of their households that were growing maize.