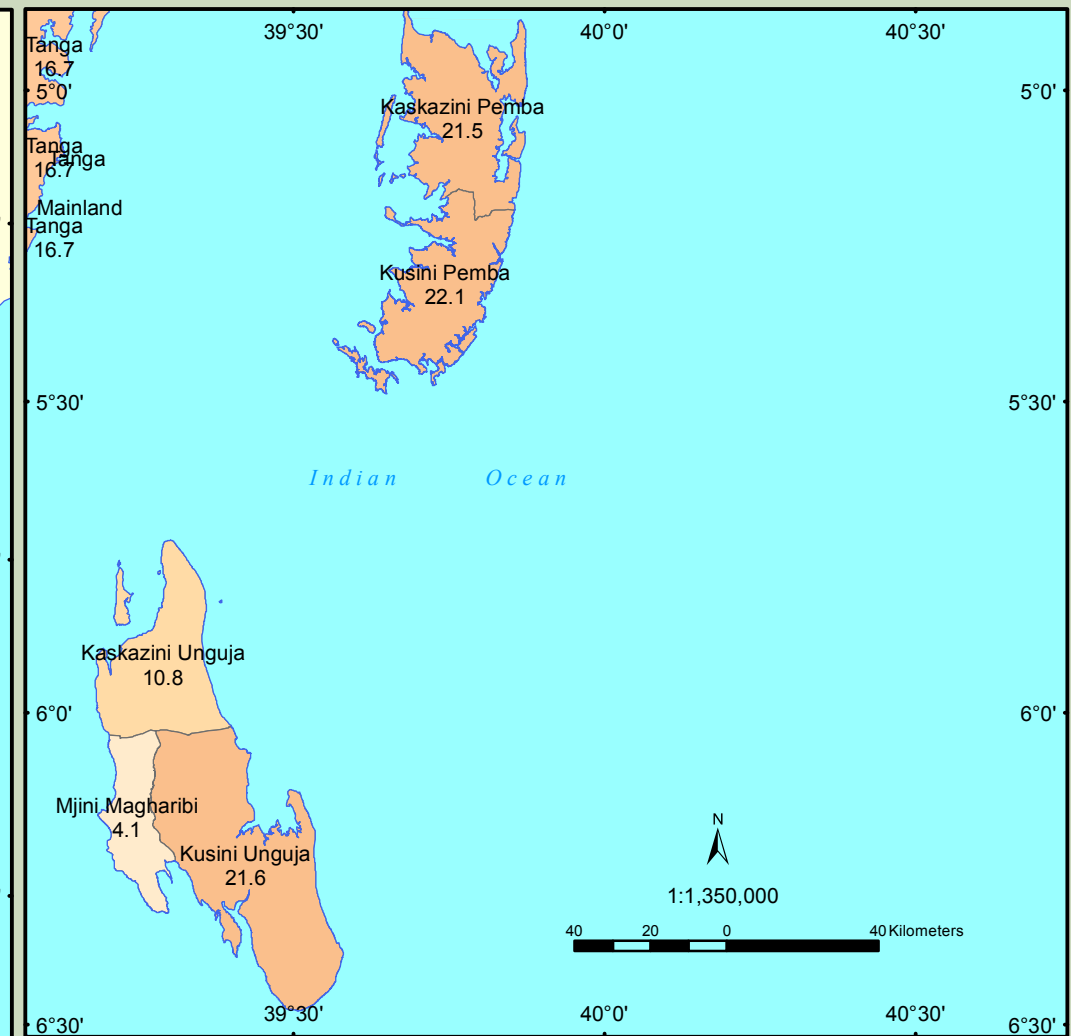
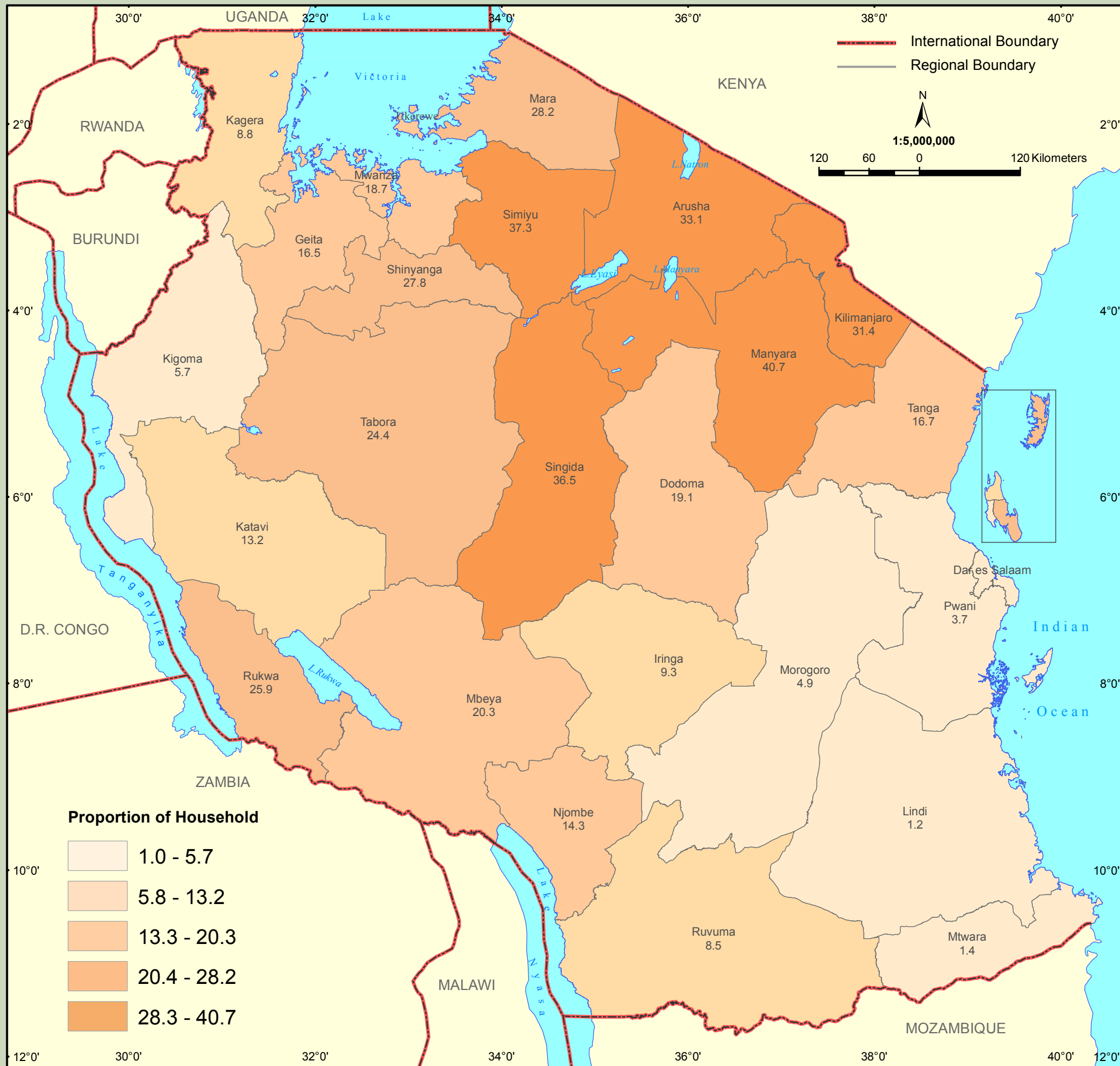


# Proportion of private households engaged in cattle raising



The livestock sector including poultry plays a significant role in the economy of agricultural households in Tanzania. Livestock generates considerable amount of income and determines the household economic and social status in many communities. Results from the 2012 PHC shows that only 16.1 percent of the country's private households were keeping cattle. Regions which were found to have a high proportion of households that were rearing cattle are Manyara (40.7), Simiyu (37.3), Singida (36.5), Dodoma (33.1) and Kilimanjaro (31.4). There were regions which had less than 10 percent of households that were rearing cattle. These regions were Dar es Salaam (1.0), Lindi (1.2), Mtwara (1.4), Pwani (3.7), Mjini Magharibi (4.1), Morogoro (4.9), Kigoma (5.7), Ruvuma (8.5), Kagera (8.8) and Iringa (9.3).