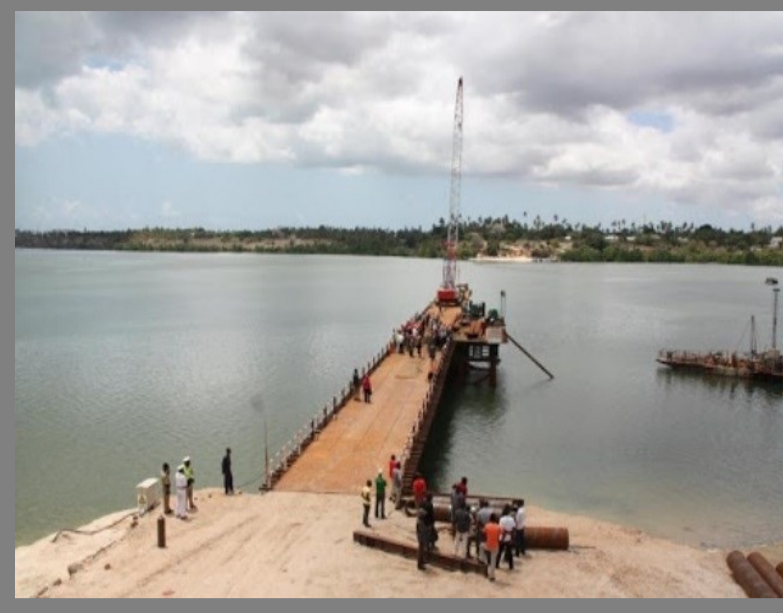




The formal sector employs 2,141,351 in Tanzania Mainland, of whom, 1,315,723 are males, 758,023 females, 39,912 youth male and 27,693 youth females



THE UNITED REPUBLIC OF TANZANIA



The formal sector recruited 230,515 new employees in 2014 and there were 174,149 unfilled vacancies.



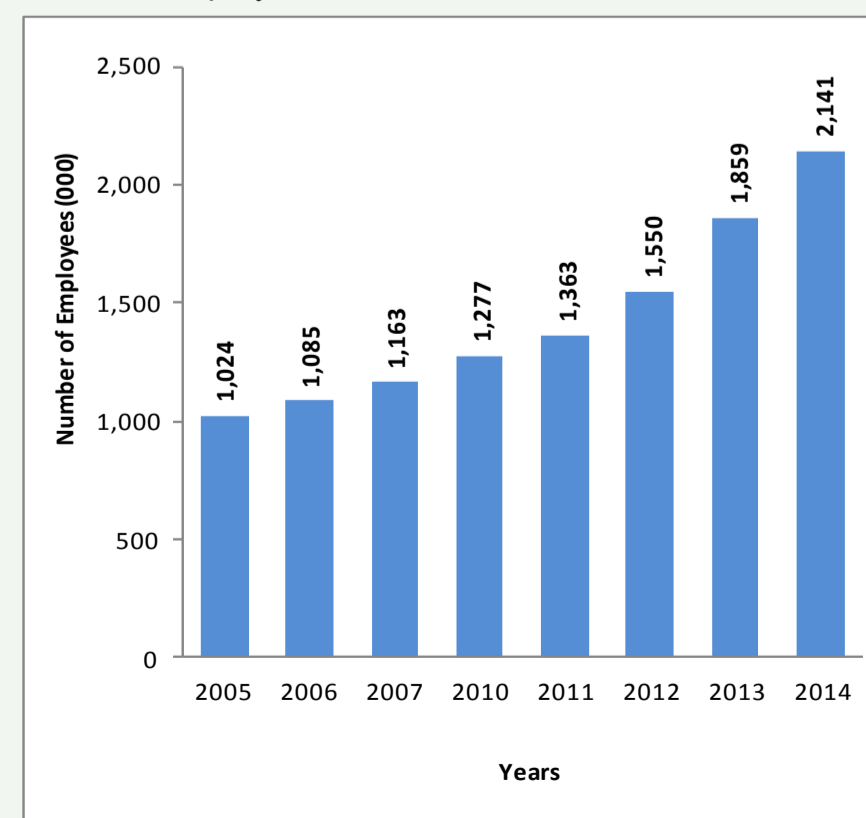
## EMPLOYMENT AND EARNINGS SURVEY RESULTS

### SUMMARY OF KEY INDICATORS OF EMPLOYMENT AND EARNINGS IN THE FORMAL SECTOR, TANZANIA MAINLAND, 2005 AND 2014

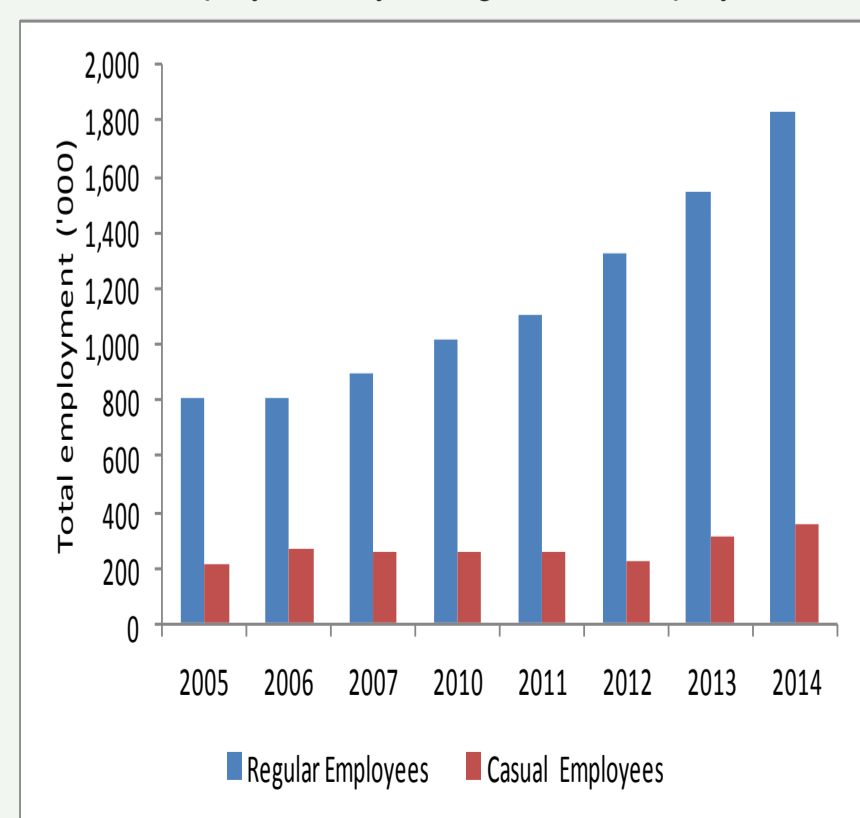
INDICATOR	2005	2006	2007	2010	2011	2012	2013	2014
<b>Total employment</b>	1,024,340	1,085,242	1,163,427	1,276,982	1,362,559	1,550,018	1,858,969	2,141,351
Male	670,206	696,290	765,443	810,763	847,302	947,545	1,126,534	1,315,723
Female	340,098	350,015	373,087	466,219	515,257	564,501	669,740	758,023
Youth Male	14,036	38,937	24,897			19,426	34,536	39,912
Youth Female						18,546	28,159	27,693
<b>Private Sector Employment</b>	567,774	600,507	630,427	813,297	859,435	995,705	1,233,068	1,432,985
<b>Public Sector Employment</b>	456,566	484,735	533,000	463,685	503,124	554,313	625,901	708,366
<b>Total Employment by Categories of Employment</b>	1,024,340	1,085,242	1,163,427	1,276,982	1,362,559	1,550,018	1,858,970	2,190,928
Regular Employees	807,996	811,977	902,336	1,019,504	1,102,473	1,323,733	1,547,337	1,831,477
Casual Employees	216,344	273,265	261,091	257,478	260,086	226,285	311,633	359,451
<b>Regular Employment by Citizenship</b>	807,996	811,977	902,336	1,019,504	1,102,473	1,323,733	1,547,337	1,781,900
Citizens of Tanzania	798,476	806,540	892,802	1,010,918	1,093,853	1,311,327	1,531,665	1,762,408
Non citizen	9,520	5,437	9,534	8,586	8,620	12,406	15,672	19,492
<b>Employment by Selected Industry</b>								
Agriculture, forestry and fishing	82,786	146,509	108,513	138,074	173,254	95,854	143,505	117,708
Mining and quarrying	8,776	11,702	11,559	12,125	11,291	15,401	17,351	24,519
Manufacturing	196,805	196,120	231,678	220,273	188,403	260,974	355,103	423,081
Construction	26,259	32,770	27,643	34,238	34,692	44,233	46,639	51,398
Transportation and storage	39,629	48,973	44,266	55,561	32,474	44,122	66,860	65,815
Education	67,976	81,352	86,072	155,787	154,528	254,538	321,807	366,125
<b>Employment for Selected Regions</b>								
Dar es Salaam	265,728	243,619	323,565	419,583	456,815	511,596	557,591	720,480
Morogoro	62,288	56,568	54,712	155,545	191,473	141,416	198,075	259,749
Arusha	54,428	51,445	91,089	65,906	74,432	82,002	121,932	134,641

INDICATOR	2005	2006	2007	2010	2011	2012	2013	2014
<b>Monthly Average Earnings by Sector and Sex (TZS)</b>								
<b>Private Sector (Both Sexes)</b>	253,533	267,260	242,857	307,850	317,089	307,026	322,527	334,017
Male	271,535	273,210	252,466	331,067	324,946	324,815	350,512	358,989
Female	195,328	231,790	214,389	252,360	254,065	314,149	313,301	325,975
<b>Public Sector (Both Sexes)</b>	336,281	573,550	554,090	623,792	638,486	671,639	743,436	829,857
Male	347,640	759,660	665,919	658,710	667,121	701,671	768,502	854,022
Female	248,975	426,280	360,720	478,559	550,912	593,666	631,008	755,308
<b>Total Annual Wage Bill (TZS Million)</b>	2,592,358	3,394,201	3,488,390	5,220,837	5,912,916	8,887,420	11,252,251	13,934,332
Private Sector	1,316,788	1,524,178	1,595,037	2,567,385	2,753,647	4,926,339	6,615,486	8,043,248
Public Sector	1,275,570	1,870,023	1,893,353	2,653,452	3,159,269	3,961,081	4,636,765	5,891,084
<b>Total Newly Recruited Workers</b>				53,442	47,637	74,474	80,216	281,698
<b>Total Newly Recruited Workers for Selected Occupations</b>				40,316	35,212	49,475	63,565	230,515
Legislators, Administrators and Managers				1,239	787	1,093	2,550	7,742
Professionals				10,270	5,931	12,134	15,769	58,715
Technicians and Associate Professionals				18,249	18,676	31,191	33,416	138,505
Plant and Machine Operators and Assemblers				5,477	3,391	2,660	7,510	14,520
Clerks				5,081	6,427	2,397	4,320	11,033
<b>Total Number of Vacancies</b>				90,792	65,977	126,073	112,761	174,149
<b>Total Job Vacancies for Selected Occupations</b>				82,746	59,521	118,261	103,601	155,436
Legislators, Administrators and Managers				2,309	2,013	2,623	3,379	9,406
Professionals				17,354	13,699	23,163	27,329	30,990
Technicians and associate professionals				52,357	33,590	76,252	63,207	103,277
Service workers and shop sales workers				6,199	5,617	9,395	5,433	5,471
Clerks				4,527	4,602	6,828	4,253	6,292

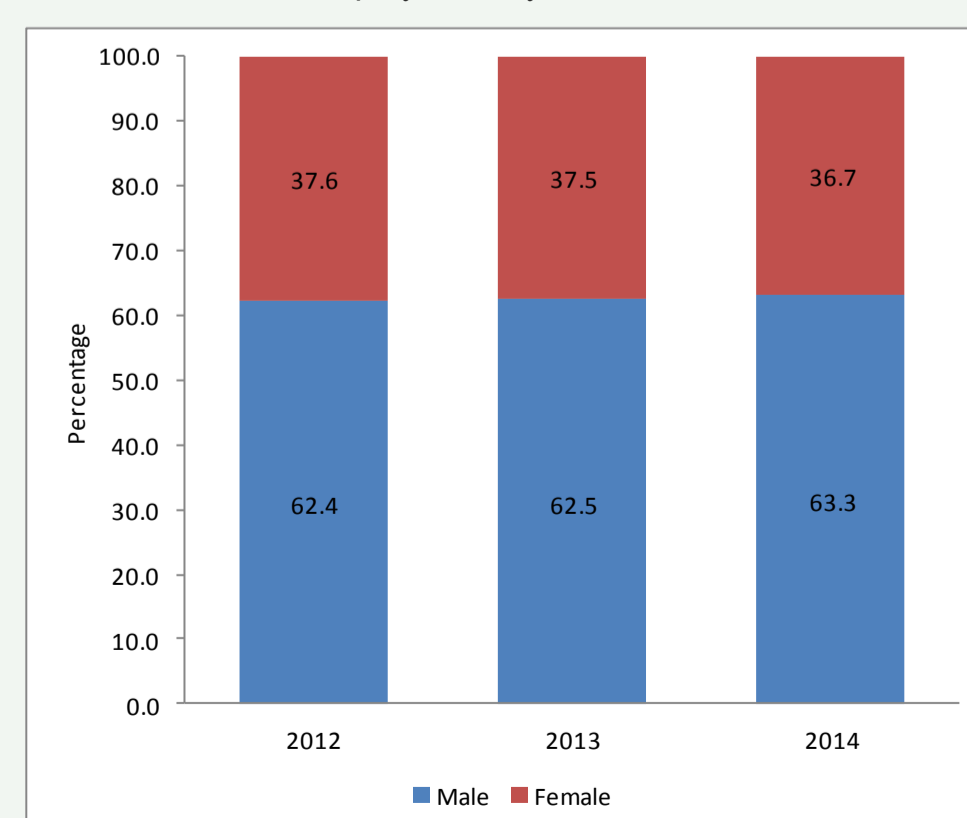
Total Employment in the Formal Sector 2005 -2014



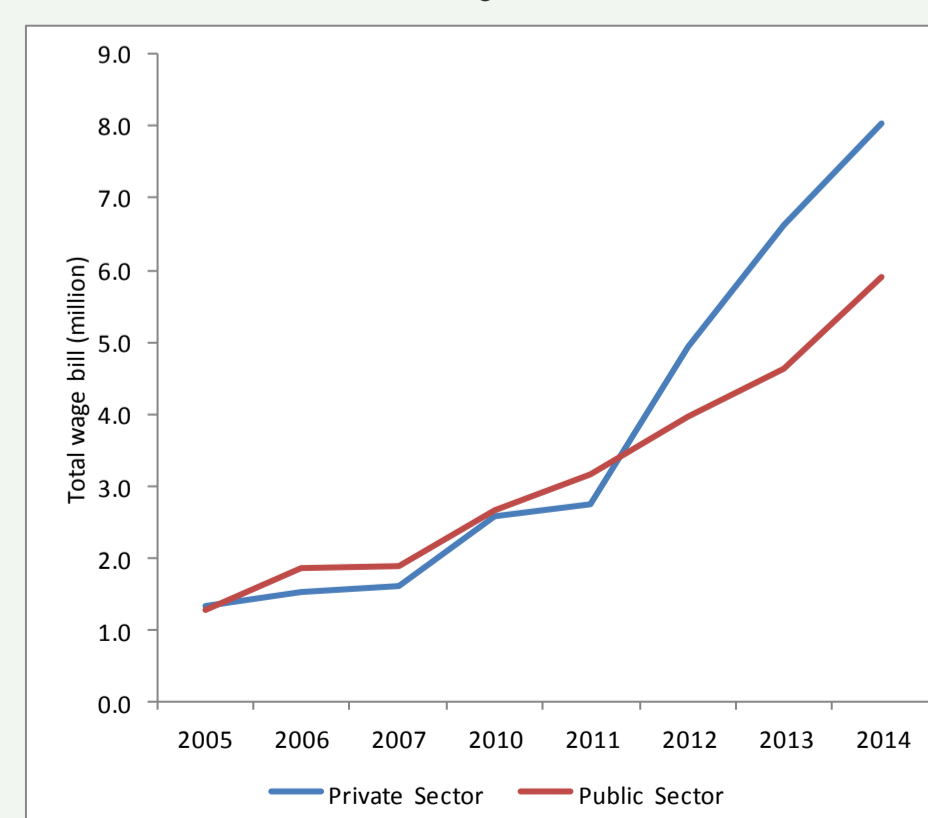
Total Employment by Categories of Employment



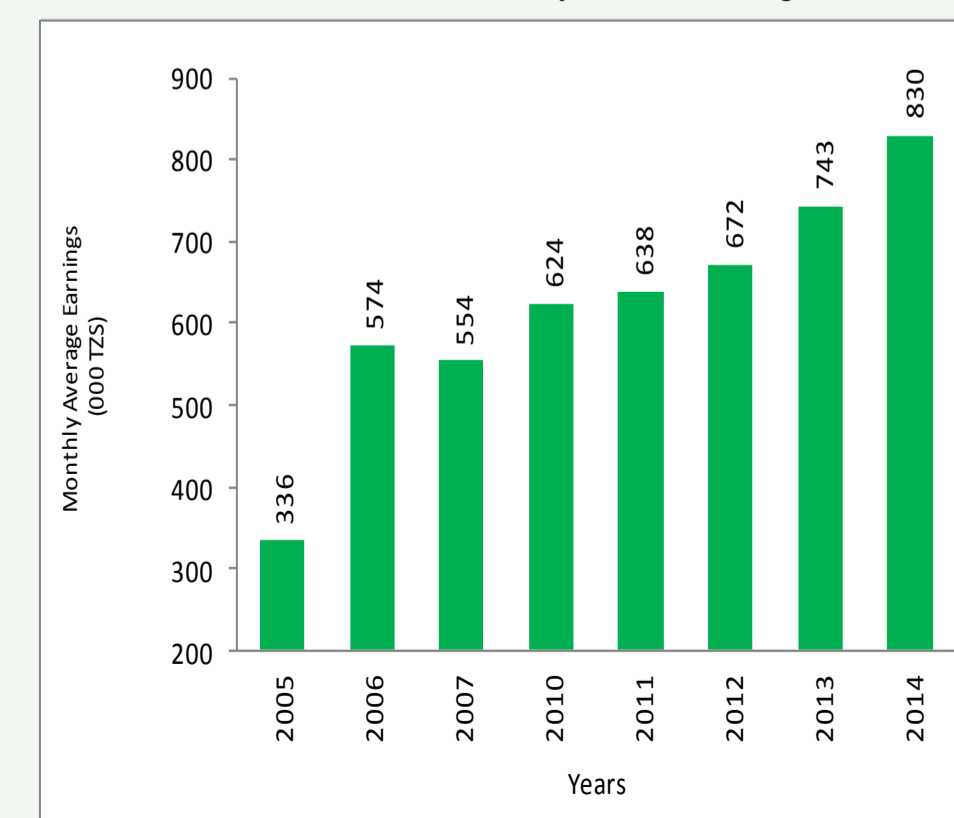
Total employment by sex, 2012-2014



Total annual wage bill 2005-2014



Public Sector Monthly Cash Earnings



Newly Recruited Workers, 2010-2014

