



THE UNITED REPUBLIC OF TANZANIA

NATIONAL ACCOUNTS OF TANZANIA MAINLAND

2001 - 2012



National Bureau of Statistics

**Ministry of Finance
Dar-es-Salaam**

October, 2013

PREFACE

The publication “National Accounts of Tanzania Mainland 2001 - 2012” is the fifth in the series of publications with GDP at 2001 prices. It contains time series of main aggregates at current and constant prices from 2001 to 2012.

The adoption of the United Nations System of National Accounts - SNA 1993 makes it possible to compare the Tanzania national accounts aggregates with those of other countries.

The main data sources used in the compilation of the national accounts estimates include, 2001 Household Budget Survey (HBS), Agriculture Sample Census 2002/03, 2001 Integrated Labour Force Survey (ILFS), surveys of industrial production, 2006 Foreign Direct Investment Survey and the 2002 Population and Housing Census. Secondary information was extracted from administrative records which include information on import and export of goods and services, Government Finance Statistics (GFS) and Value Added Tax (VAT) collections. Specific studies such as the 1992 Input-Output Table of Tanzania were also used.

I recognize the contribution from numerous organizations both public and private which provided basic data and information. The National Bureau of Statistics (NBS) also welcomes views and comments from users for improving the national accounts estimates in the future.



Dr. Albina A. Chuwa
Director General,
National Bureau of Statistics
Dar es Salaam.

CONTENTS

	Page
I. INTRODUCTION	1
II. CONCEPTS AND DEFINITIONS	1
III. ECONOMIC ACTIVITIES	3
IV. METHODOLOGY	5
V. COMPILATION BY ACTIVITY	6
VI. GRAPHS AND CHARTS	9
VII. EXPENDITURE ON GROSS DOMESTIC PRODUCT	13
VIII. NET DISPOSABLE INCOME	17
IX. EXTERNAL TRANSACTIONS	21
X. CAPITAL FORMATION	23
XI. REGIONAL GROSS DOMESTIC PRODUCT	28
XII. APPENDICES	34

LIST OF GRAPHS

Graph 1: Average Annual Growth Rates of Total GDP at 2001 Prices	9
Graph 2: Average Annual Growth Rates of Agriculture and Fishing GDP at 2001 Prices	9
Graph 3: Average Annual Growth Rates of Industry and Construction GDP at 2001 Prices	9
Graph 4: Average Annual Growth Rates of Service GDP at 2001 Prices	10

LIST OF CHARTS

Chart 1: Share of Gross Domestic Product at Basic Current Prices by Economic Activity, 2012	10
Chart 2: Composition of Expenditure on GDP at Current Market Prices (Percentage)	13
Chart 3: Composition of Net National Disposable Income at Current Market Prices, 2012	17
Chart 4: Percentage Shares of Export and Imports of Goods and Services to GDP at Current Market Prices	21
Chart 5: Regional Gross Domestic Product for Dar es Salaam and Mwanza at Current Prices	29
Chart 6: Per Capita Gross Domestic Product at Current Market Prices	30

LIST OF TABLES

Table 1: Gross Domestic Product and Some Allied Aggregates (Summary Table)	2
Table 2: Selected Important Ratios at Current and Constant Prices	3
Table 3: Gross Domestic Product Estimates at Current Prices by Economic Activity	4
Table 4: Shares of Gross Domestic Product at Current Prices by Economic Activity	5
Table 4a: Annual Growth Rates of Gross Domestic Product at 2001 Prices by Economic Activity	6
Table 5: Implicit Deflators of Gross Domestic Product by Economic Activity (2001 = 100)	7
Table 6: Gross Domestic Product at 2001 Prices by Economic Activity	8
Table 7: Shares of Gross Domestic Product at 2001 Prices by Economic Activity	9
Table 8: Gross Domestic Product of Agriculture and Fishing at Current Prices	10
Table 9: Gross Domestic Product of Agriculture and Fishing at 2001 Prices	10
Table 10: Gross Domestic Product of Industry and Construction at Current Prices	10
Table 11: Gross Domestic Product of Industry and Construction at 2001 Prices	11
Table 12: Gross Domestic Product of Services at Current Prices	11
Table 13: Gross Domestic Product of Services at 2001 Prices	12
Table 14: Gross Domestic Product by Type of Expenditure at Current Market Prices	14
Table 15: Gross Domestic Product by Type of Expenditure at 2001 Market Prices	15
Table 16: Implicit Deflators of Gross Domestic Product by Type of Expenditure (2001 = 100)	16
Table 17: National Disposable Income at Current Market Prices and Its Appropriation	18
Table 18: Capital Finance at Current Prices	19
Table 19: Relation Among National Accounting Aggregates at Current Basic Prices	19
Table 20: Relation Among National Accounting Aggregates at Current Market Prices	20
Table 21: International Transactions at Current Prices	22
Table 22: Gross Capital Formation at Current Prices	24
Table 23: Gross Capital Formation by Public and Private Sectors at Current Prices	25
Table 24: Gross Capital Formation at 2001 Prices	26
Table 25: Gross Fixed Capital Formation at Current Prices by Kind of Economic Activity	27
Table 26: Regional GDP at Current Market Prices	31
Table 27: Regional Shares of GDP at Current Market Prices	32
Table 28: Regional Per Capita GDP at Current Market Prices	33

APPENDICES

Appendix 1: Annual Average Rates of Growth of Total GDP at 2001 Prices	34
Appendix 1: Annual Average Rates of Growth of Agriculture and Fishing GDP at 2001 Prices	35
Appendix 3: Annual Average Rates of Growth of Industry and Construction GDP at 2001 Prices	34
Appendix 4: Annual Average Rates of Growth of Services GDP at 2001 Prices (Put the methodology	35

I. INTRODUCTION

The National Accounts of Tanzania Mainland 2001 - 2012 publication gives consolidated estimates of Gross Domestic Product (GDP) and other allied aggregates of Tanzania Mainland. It is the fifth in the series of publications with GDP at 2001 prices. GDP figures are also available in the “Economic Survey 2012” published by the Ministry of Finance. The estimates for 2012 are provisional while those of 2011 have been revised.

The main sources of the National Accounts Statistics data are surveys such as Household Budget Survey 2001, Integrated Labour Force Survey 2001, Agriculture Sample Census 2002/03, surveys of industrial production, Foreign Direct Investment Survey 2006 and the 2002 Population and Housing Census. Additional data are also collected from all economic activities in Tanzania Mainland.

II. CONCEPTS AND DEFINITIONS

The concepts and definitions conform to the United Nations Recommendations on the subject as given in the United Nations System of National Accounts (SNA 1993).

The following are definitions of the main aggregates:

The System of National Accounts (SNA)

A System of National Accounts is a coherent, consistent and integrated set of macro-economic accounts based on the internationally agreed concepts, definitions, classifications and accounting procedures. In 1953, the United Nations Statistical Office produced the first version of “A System of National Accounts” which was later revised in 1968. Since then, the SNA has undergone extensive revisions in line with country experiences.

The version “SNA 1993” was published in 1993 and countries have been advised to adopt it. Generally, the SNA’s basic structure has remained almost the same.

The following are short definitions of the main aggregates and are given for the convenience of readers and users;

- Gross Domestic Product (GDP) is the sum of value added of all domestic producers in the economy. It represents the money value of all goods and services produced within a country out of economic activity during a specified period, usually a year, before the

provision for the consumption of fixed capital.

- GDP at basic prices excludes any taxes payable on products and includes any subsidies receivable on products while purchasers' prices include taxes as well as trade and transport margins.
- GDP at market prices is equal to the GDP at basic prices plus taxes less subsidies on products.
- Gross National Income (GNI) is equal to GDP plus net primary income from abroad.
- Gross National Disposable Income is the sum of Gross National Income plus net current transfers from the rest of the world.
- Gross Fixed Capital Formation consists of net additions to the assets of producers' tangible reproducible goods whose expected lifetime use is more than one year.
- Production in an economic sense can be described as an activity carried out under the control and responsibility of an institutional unit that uses inputs of labour, capital, and intermediate goods and services to produce outputs of goods and services. These outputs must be of a kind that can be delivered to other units.
- Consumption of Fixed Capital is a cost of production, relating to the wear and tear of fixed assets in the process of their use. It measures the decline in the current value of the stock of fixed assets during the accounting period. This current value may differ substantially from the historic costs prevailing at the time when the assets were acquired.
- Compensation of Employees is the total remuneration payable by an enterprise to the employees for work done by them during the accounting period. Unlike employees, workers who are the sole or joint owners of the unincorporated enterprise where they work are classified as self-employed. Workers engaged in production for own final consumption and unpaid family workers also fall in this category.
- Taxes on products are payable on goods and services when they are produced, sold or used. They include taxes on imports that become payable when products enter the country. Taxes on products are proportional to or vary otherwise with the value or quantity of the goods and services on which they are levied.
- Subsidies are current transfers that government pays to producers that constitute additions to the income receivable from their output.

- The Basic Price is the amount actually receivable by the producer, in other words the amount the producer pockets. It does not include any taxes on products but, on the other hand, it includes subsidies on products.
- The Purchaser's Price, derived as the sum of all supply components, is the amount paid by the purchaser excluding deductible VAT. They include taxes on imports that become payable when products enter the country.

Geographical Coverage

The estimates presented in this report relate to Tanzania Mainland only.

Estimates of GDP by Region

Regional estimates of Gross Domestic Product at current prices are presented for the period of 2001-2012. With the exception of Agriculture, Mining and Manufacturing; estimates of the remaining activities are based on the number of registered establishments in the region.

Household Final Consumption

This consists of the expenditure of resident households on goods and services. It includes goods produced for own consumption and imputed expenditures made by Government and Non-profit Institutions Serving Households (NPISHs) on behalf of households.

Government Final Consumption

This consists of expenditures incurred by both Central and Local Governments on goods and services other than those relating to the provision of health and education services.

III. ECONOMIC ACTIVITIES

Tanzania Mainland uses the International Standard Industrial Classification (ISIC) Revision 3 which classifies economic activities into 15 categories namely: (A) Agriculture, Hunting and Forestry; (B) Fishing; (C) Mining and Quarrying; (D) Manufacturing; (E) Electricity, Gas and Water Supply; (F) Construction; (G) Wholesale and Retail Trade, Repair of motor vehicles, motorcycles, personal and household goods; (H) Hotels and Restaurants; (I) Transport, Storage and Communications; (J) Financial Intermediation; (K) Real Estate, Renting and Business Services; (L) Public Administration and Defense, Compulsory Social Security; (M) Education; (N) Health and Social Work; (O) Other Community, Social and Personal Services.

A: Agriculture

Agriculture activities cover: Crops, Livestock, Forestry and Hunting.

i. Crops

This activity covers: major food and cash crops as well as other crops. Major food crops include maize, paddy, sorghum, millet, cassava, beans, Irish potatoes and sweet potatoes. On the other hand, major cash crops include cotton, tea, coffee, sisal, tobacco and cashew nuts.

Other crops include green bananas, vegetables, fresh fruits, sugar cane, nuts, dried fruits, oil seeds and pyrethrum.

ii. Livestock

The activity includes: slaughtered animals (cattle, goats, sheep and pigs); sold milk and other livestock products and by-products; sold chicken, other poultry and eggs; and changes in inventories of cattle, goat and sheep.

iii. Forestry and Hunting

Forestry covers the production of logs, charcoal, fuel wood, honey and beeswax while hunting includes both animals hunted by tourists and domestic hunters, trophies and sold live animals.

B: Fishing

Fishing activity in Tanzania Mainland covers the harvested fish from both marine and fresh waters including rivers, lakes and dams.

C: Mining and Quarrying

Mining is a primary activity which involves extraction of both underground and surface minerals and quarries. It includes solids such as coal and ores; liquids such as crude petroleum and gases such as natural gas. Supplemental activities such as dressing, washing, cleaning, grading, milling, floatation, melting, pelleting, topping etc. are also included.

D: Manufacturing

This activity involves the conversion of raw materials into finished goods. The main categories include; food, dairy products, grain mills, beverages, tobacco products, textiles, wood and paper products,

chemicals, metals, non-metals, cement, machinery and other food products.

E: Electricity, Gas and Water Supply

The activity covers all establishments engaged in the generation, distribution and transmission of electricity and gas. It also includes production and distribution of water to various consumers. However, the small scale electricity generated in the country by individuals/households such as solar energy is not captured due to lack of data.

F: Construction

The activity covers the process of site preparation, complete construction of parts of civil engineering, installation or demolition of buildings or other structures. Construction of buildings consists of residential and non-residential as well as rural own-account construction, whereas construction of other works consists of land improvement, roads and bridges, power stations, dams, wells and other structures.

G: Wholesale, Retail Trade and Repairs

This activity covers wholesale and retail trade, repairs of motor vehicles, motorcycles as well as personal and household goods.

H: Hotels and Restaurants

The activity covers establishments engaged in running of hotels and restaurants.

I: Transport, Storage and Communication

Transport and communication activities consist of land transport (road, rail), water, air transport and storage of goods. It also includes Posts and Telecommunication activities.

J: Financial Intermediation

The activity consists of establishments engaged in financial intermediation. These include the Bank of Tanzania, commercial banks, non-bank financial institutions, insurance and bureau de changes.

K: Real Estate, Renting and Business Services

This covers real estate, renting and business services.

(i) Real Estate and Renting

This activity covers all types of dwellings both owner-occupied and rented. The dwellings (owner-occupied and rented) are categorized by urban and rural and further by types of construction materials used for the walls.

(ii) Business Services

The activity involves business service activities such as accountancy, legal, auditing, architects, consultancy, research and development.

L: Public Administration and Defense

Public administration covers activities of central, regional and local governments as well as compulsory social security funds.

M: Education

Cover public and private establishments that are engaged in delivering education services.

N: Health and Social Work

Cover public and private establishments that are engaged in delivering health services.

O: Other Community, Social and Personal Services

The activity covers establishments that are engaged in providing services such as sewage and refuse disposal, sanitation, recreational, cultural and sporting, activities of membership organizations and similar activities.

IV. METHODOLOGY

Overview of GDP Compilation

The methodologies used are based on the 1993 SNA. The following two approaches were recommended for the 2001 revision of National Accounts:

(i) Production Approach

In this approach, GDP estimates at market prices are derived by summing up the gross value added at basic prices of each industry and adding taxes less subsidies on products. This approach was used for the GDP compilation of all sectors except the Government and Central Bank.

(ii) Expenditure Approach

Expenditure approach; considers the income expenditure for the purpose of consumption or capital formation. It was used in estimating GDP for the Government and the Central Bank. Not all products purchased by domestic buyer come from domestic production; some come from outside the country. Therefore, the GDP at market prices by this approach is derived by adding up the purchases that are made for final consumption, capital formation, and imports less export (net export).

V. COMPILATION BY ACTIVITY

Agriculture and Fishing

The benchmark level for estimates of crops, livestock, forestry, hunting and fishing were obtained from the Household Budget Survey (HBS), 2001; data from the Ministry of Agriculture, Food Security and Cooperatives; and Ministry of Industry, Trade and Marketing. Intermediate consumption estimates for items other than seeds were estimated on the basis of the fertilizers used.

Mining and Quarrying

Data on quantities of minerals produced by type were obtained from the Ministry of Energy and Minerals. The mineral export values were used and intermediate consumption for each mineral was estimated based on the 1992 input-output ratios.

Manufacturing

The GDP for this activity was estimated using data from the Quarterly Survey of Industrial Production that provides Production Indices of Manufacturing Industry (PIMI) and Producer Price Index (PPI). Estimates for the Informal Sector activities were estimated on the basis of the National Informal Sector Survey (ISS), 1991 and the Informal Sector Survey, 1995 conducted in Dar es Salaam.

Electricity, Gas and Water Supply

The estimates at current prices for electricity and gas are based on the analysis of the annual accounts of respective companies. The constant price indicator is a weighted average of electricity production for domestic, commercial, industrial activities and public lighting in Tanzania Mainland as well as Zanzibar.

For water supply, the public sector estimates are based on government accounts and urban water authorities. The number of water connections was used as an indicator for constant price estimates. The private sector includes private suppliers and water collection from rivers and other sources.

Construction

The estimates at current prices are based on the analysis of Government and Parastatal Accounts. Current price estimates are deflated by a Building Material Cost Index (BMCI) produced by the National Construction Council (NCC). Rural own account construction estimates are based on current estimates of the value of such houses, the estimated lifetime and

population growth. The Consumer Price Index (CPI) was used as a deflator for the rural own account construction.

Estimates for construction of urban dwellings are based on their current values, expected lifetime and the population growth. The deflator is the BMCI.

Wholesale, Retail Trade and Repairs

The benchmark for wholesale and retail trade was estimated on the basis of the Survey of Construction, Trade and Transport (SCTT), 1994 and the National Informal Sector Survey (ISS), 1991.

Annual movements are based on estimated trade margins and the production levels of monetary agriculture, mining, and manufacturing together with the relevant components of imports.

Hotels and Restaurants

The benchmark estimates for hotels and restaurants are also based on the SCTT 1994 and the 1991 ISS. Annual movements are estimated on the basis of tourists' arrival, tourists' expenditures and annual population growth.

Transport, Storage and Communication

The road transport industry includes only those operators whose predominant business is transportation. Annual movement is based on the weighted average of monetary agriculture production and adjusted population. The CPI for transport was used as a deflator.

Other modes of transport consist of land, water, and air transport. Current price estimates were derived from the accounts of the respective operators while constant prices are based on volume of goods and passengers carried.

Estimates at current prices for communication activities are derived from respective operators' (Posts and Telecommunication Companies) accounts. The constant price estimates are based on the number of posted letters and parcels handled (posts) and deflated output (telecommunications). The deflator is the overall CPI.

Financial Intermediation

The current price estimates for financial intermediation are based on the analysis of respective company accounts, both public and private sectors. Constant price estimates are based on levels of employment, lending as well as deposits. The indicators for insurance and bureau de change activities are the total number of policies in force and level of employment respectively.

Real Estate, Renting and Business Services

(i) Real Estate and Renting

The dwellings (owner-occupied and rented) are grouped into urban and rural. They are further classified by types of construction materials used for the walls. Information on urban and rural population growth rates was used to estimate growth rates in the number of dwellings in each category in the benchmark year. The estimated growth rates are used each year to extrapolate the base year figures. The

base year estimates were obtained from the market value of rent for dwellings in each category as reported in the 2001 HBS.

The resultant rents for urban and rural dwellings are summed up for each type of construction material. The proportions of each type of owner occupied dwelling were also obtained from the analysis of HBS dataset. These proportions were used to split the values of rent for each type of dwelling between owner-occupied and rented dwellings. The CPI for rent is used as the price indicator to obtain value indices for both categories.

(ii) Business Services

Business services were estimated on the basis of the quantity indicators from trade, mining, manufacturing and hotels activities. The CPI (all items) was used as the deflator.

Public Administration and Defense

Estimates were derived directly from Government accounts. The value added was derived as a total of personal emoluments, pensions, gratuities and a portion of travelling allowances. The indicator for growth is the level of employment.

Education

Gross Value Added (GVA) for public schools at current prices to a larger extent is estimated from government expenditure on education. Gross output at constant prices was estimated by deflating output at current prices using CPI on education.

The value added at current prices for private schools was estimated by inflating gross output at constant prices using CPI for education. Gross output at constant prices was estimated based on the number of enrolled students.

Health and Social Work

Gross Value Added for public health facilities at current prices was estimated from government expenditure on health. Gross value added at constant prices was estimated by deflating GVA at current prices using CPI on health. The value added at current prices for private health facilities was estimated by inflating GVA at constant prices using CPI for health. GVA at constant prices was estimated on the basis of the number of patients attended.

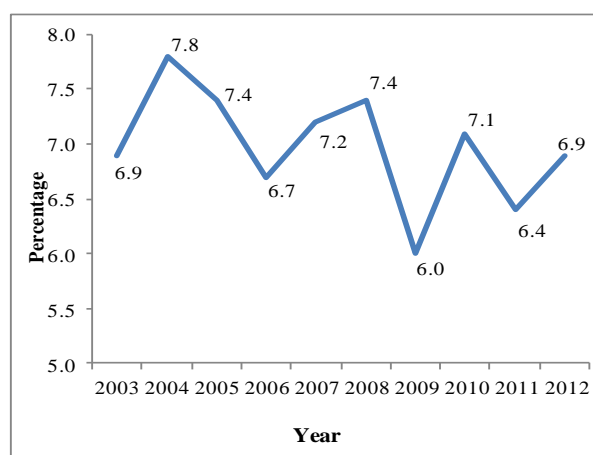
Other Community and Personal Services

Gross Output at current prices was estimated by extrapolating benchmark output using value index derived from CPI (all items) and index of urban population growth rates. Gross Output at constant prices was estimated by extrapolating benchmark output using growth rates of urban population as a quantity index.

VI. GRAPHS AND CHARTS

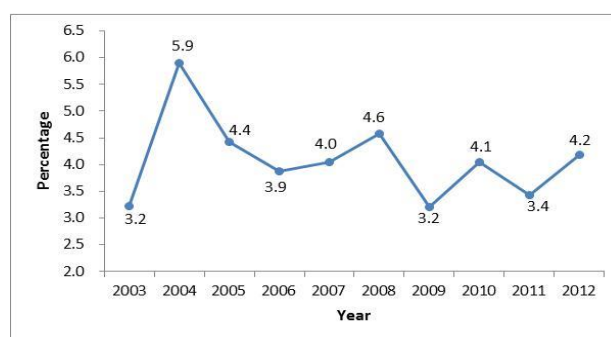
Graph 1 shows the average annual growth rates of total GDP at 2001 prices for the period 2003 to 2012. The results show that GDP in real terms grew by 6.9 percent in 2012 compared to 6.4 percent in 2011. The highest growth rate of 7.8 percent was recorded in 2004 and lowest growth rate of 6.0 percent was recorded in 2009.

Graph 1: Average Annual Growth Rates of Total GDP at 2001 Prices



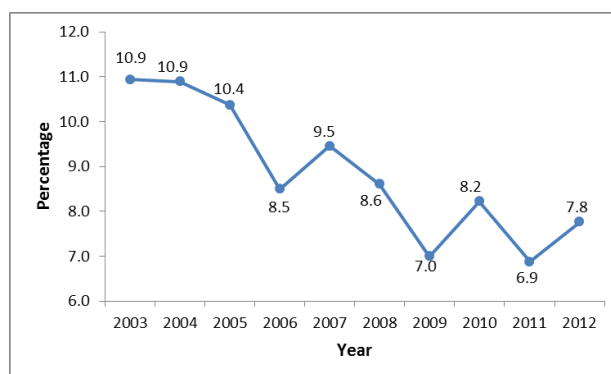
Graph 2 shows that, in 2012, agriculture and fishing activities grew by 4.2 percent compared to 3.4 percent in 2011. The recorded growth rate was due to good weather and well distributed rainfall in the agricultural seasons.

Graph 2: Average Annual Growth Rates of Agriculture and Fishing GDP at 2001 Prices



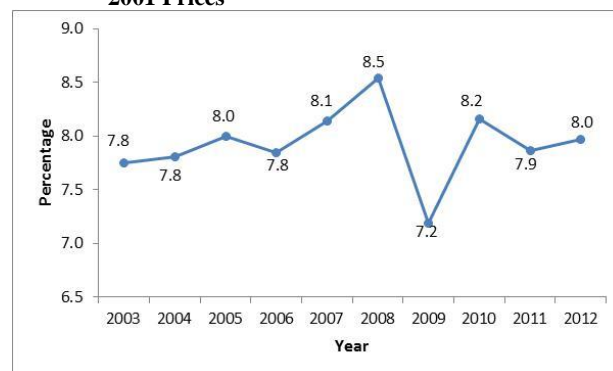
Graph 3 shows that, Industrial and construction activities grew by 7.8 percent in 2012 compared to 6.9 percent in 2011. The recorded growth rate was attributed to the increase in mineral production, construction and manufacturing activities during the reference period. The highest growth rate of 10.9 percent was in both 2003 and 2004 while the lowest growth rate of 6.9 percent was recorded in 2011.

Graph 3: Average Annual Growth Rates of Industry and Construction GDP at 2001 Prices



Graph 4 shows that service activities grew by 8.0 percent in 2012 compared to 7.9 percent in 2011. The lowest increase over the period 2003 to 2012 was 7.2 percent in 2009.

Graph 4: Average Annual Growth Rates of Service GDP at 2001 Prices



Gross Domestic Product at Constant Market Prices

Gross Domestic Product (GDP) at constant market price is among the most important economic indicators. Total GDP at 2001 prices after adjusting for Financial Intermediation Services Indirectly Measured (FISIM) and taxes were TShs 17,914 billion and TShs 19,156 billion in 2011 and 2012 respectively. The average annual growth rate in 2012 was 6.9 percent. In 2012 the highest and lowest growth rates of 20.6 percent and 2.4 percent were recorded in communication and forestry and hunting activities respectively.

Shares of GDP at Current Market Prices

Chart 1 shows that in 2012, shares of GDP at current prices before adjustment for taxes and FISIM were: Agriculture (26.8 percent), Fishing (1.6 percent), Industry and Construction (24.0 percent) and Services (47.6 percent).

Chart 1: Share of Gross Domestic Product at Basic Current Prices by Economic Activity, 2012

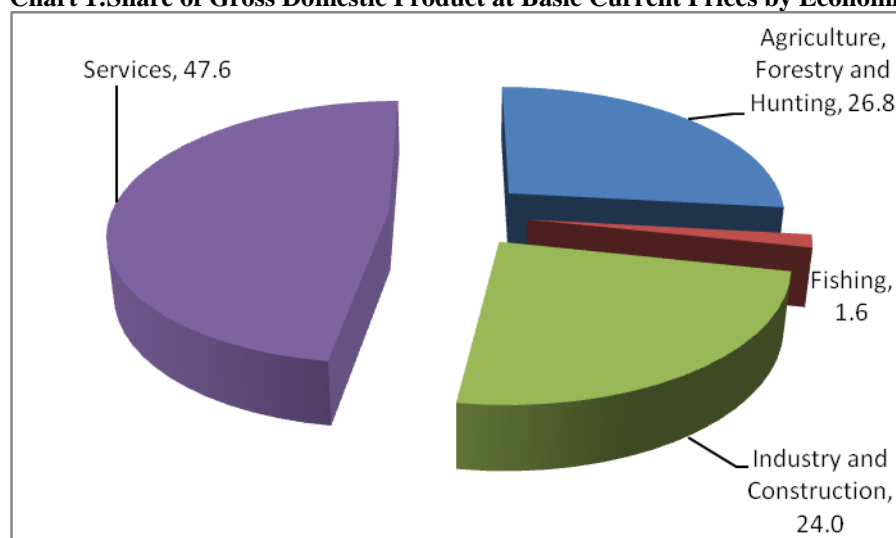


Table 1: Gross Domestic Product and Some Allied Aggregates (Summary Table)

Heading	TShs billions										
	2001	2003	2004	2005	2006	2007	2008	2009	2010	2011r	2012p
1. Gross Domestic Product at b.p	8,488	11,275	12,973	14,598	16,278	18,990	22,452	25,510	29,298	34,061	40,690
2. Gross Domestic Product at m.p.	9,100	12,107	13,972	15,965	17,941	20,948	24,782	28,213	32,293	37,533	44,718
3. Gross National Income at b.p	8,449	11,230	12,779	14,386	16,197	18,894	22,311	25,412	29,188	33,755	40,375
4. Gross National Income at m.p.	9,061	12,062	13,778	15,754	17,861	20,876	24,640	28,115	32,184	37,227	44,403
5. Net Domestic Product at b.p	7,467	10,064	11,608	12,992	14,439	16,936	20,150	23,035	26,633	31,188	37,573
6. Net National Income at b.p	7,428	10,019	11,414	12,781	14,358	16,840	20,008	22,937	26,523	30,883	37,258
7. Net National Income at m.p.	8,040	10,850	12,413	14,148	16,021	18,799	22,338	25,640	29,519	34,355	41,286
8. Gross Fixed capital Formation	1,547	2,289	3,096	3,960	4,883	6,119	7,274	8,021	10,178	13,534	15,118
9. Gross Capital Formation	1,588	2,332	3,153	4,024	4,958	6,210	7,381	8,173	10,343	13,762	15,452
10. Government Final Consumption. Exp.	1,079	1,859	2,362	2,805	3,145	4,039	4,322	4,927	5,208	6,146	7,118
11. Household Final Consumption Exp.	6,822	8,442	9,353	10,582	12,195	14,231	16,460	18,477	20,209	24,816	29,399
12. Net Savings	648	1,134	1,396	1,294	1,433	1,341	2,332	3,144	5,286	4,811	6,034
AT 2001 PRICES											
13. Gross Domestic Product at b.p	TShs millions										
	8,488	9,722	10,483	11,256	12,013	12,874	13,829	14,664	15,700	16,712	17,866
	1,547	1,903	2,101	2,494	2,894	3,313	3,572	3,929	4,333	5,694	6,035
	1,588	1,946	2,144	2,535	2,939	3,358	3,617	3,982	4,386	5,762	6,107
PER CAPITA GDP											
16. Per Capita GDP at current Market prices	TShs.										
	2001	2003	2004	2005	2006	2007	2008	2009	2010	2011r	2012p
16. Per Capita GDP at current Market prices	276,741	353,496	396,154	441,063	478,100	547,081	627,787	693,470	770,464	869,436	1,025,038
17. Per Capita GDP at current Basic prices	258,130	329,212	367,828	403,283	433,783	495,932	568,771	627,046	698,990	789,010	932,719

bp: basic price
mp: market price
Exp.: Expenditure
r: revised
p: provisional

Table 2: Selected Important Ratios at Current and Constant Prices

Heading	2001	2003	2004	2005	2006	2007	2008	2009	2010	2011r	2012p
1.Compensation of Employees to Net Domestic Product (NDP) at b.p.	19.3	16.7	15.6	15.1	15.2	14.8	17.1	15.6	14.2	13.1	12.1
2. Gross Capital Formation to GDP at m.p.	17.4	19.2	22.6	25.1	27.6	29.6	29.8	29.0	32.0	36.7	34.6
3. Government Final Consumption Expenditure to Net National Disposable Income at m.p	12.6	16.3	18.0	19.1	18.7	20.5	18.7	18.6	17.0	17.2	16.7
4. Household Final Consumption Expenditure to Net National Disposable Income at m.p	79.8	73.8	71.3	72.1	72.7	72.3	71.3	69.6	65.8	69.4	69.1
5. Savings to Net National Disposable Income at m.p	7.6	9.9	10.4	8.8	8.5	6.8	10.1	11.8	17.2	13.4	14.2
6. GFCF at current prices / GDP at current b.p	18.2	20.2	23.9	27.0	30.0	32.2	32.4	31.4	34.7	39.7	37.2
7. GFCF at constant prices /GDP at constant b.p	18.2	19.6	20.0	22.2	24.1	25.7	25.8	26.8	27.6	34.1	33.8
8. Agriculture, Fishing,Hunting and Forestry to GDP at current b.p	32.9	32.5	33.3	31.8	30.4	30.0	29.7	28.8	28.1	27.7	28.7
9. Industry and Construction to GDP at current b.p	19.3	22.5	22.3	22.7	22.9	23.3	23.1	24.3	24.7	25.1	24.3
10. Services to GDP at current b.p	48.8	45.9	45.3	46.5	47.8	47.8	48.2	48.2	48.4	48.5	48.2

bp: basic price
mp: market price
Exp.:Expenditure
r: revised
p: provisional

Table 3: Gross Domestic Product Estimates at Current Prices by Economic Activity

	TShs million										
Economic Activity	2001	2003	2004	2005	2006	2007	2008	2009	2010	2011r	2012p
Agriculture, Hunting and Forestry	2,636,193	3,479,646	4,116,444	4,410,478	4,708,556	5,413,257	6,374,476	6,945,213	7,782,138	8,887,273	11,033,445
Crops	1,945,945	2,641,586	3,122,896	3,272,143	3,452,690	3,983,327	4,700,326	5,187,080	5,757,659	6,545,372	7,854,446
Livestock	459,448	563,136	669,021	791,823	867,772	990,996	1,169,375	1,135,527	1,239,996	1,405,535	2,064,723
Hunting and Forestry	230,800	274,924	324,527	346,512	388,094	438,934	504,774	622,606	784,484	936,367	1,114,276
Fishing	153,660	187,693	207,025	225,658	241,454	277,189	296,592	399,715	459,673	541,919	641,903
Industry and construction	1,638,459	2,538,485	2,899,263	3,316,757	3,723,978	4,431,057	5,194,434	6,193,765	7,225,731	8,538,246	9,893,904
Mining and quarrying	159,979	288,200	357,368	457,431	576,363	742,932	839,513	941,094	1,072,847	1,255,231	1,543,935
Manufacturing	762,400	1,002,827	1,129,558	1,269,145	1,395,282	1,625,504	1,935,975	2,434,754	2,899,094	3,482,066	3,751,523
Electricity, gas	196,860	227,081	244,977	271,925	276,915	335,898	421,216	479,768	571,130	684,847	835,513
Water supply	43,840	53,925	61,474	68,605	75,809	84,982	93,310	104,263	113,691	125,823	144,696
Construction	475,380	966,452	1,105,886	1,249,651	1,399,609	1,641,741	1,904,420	2,233,885	2,568,968	2,990,279	3,618,238
Services	4,139,962	5,174,913	5,870,447	6,786,597	7,773,898	9,076,622	10,846,587	12,300,072	14,188,185	16,525,870	19,618,090
Trade and repairs	1,182,797	1,454,527	1,593,717	1,752,826	2,044,421	2,416,506	2,875,642	3,341,496	3,909,550	4,597,631	5,494,169
Hotels and restaurants	250,978	286,883	319,365	394,417	459,584	559,722	649,278	635,414	754,037	856,439	1,010,598
Transport	487,062	577,977	637,720	706,291	769,830	886,844	1,037,608	1,409,636	1,646,704	1,996,102	2,365,380
Communications	112,783	161,623	206,877	277,216	374,241	487,132	611,350	596,230	691,627	811,265	1,022,193
Financial intermediation	140,000	204,766	229,370	265,261	299,734	345,000	403,727	477,492	567,822	666,216	799,459
Real estate and business services	936,440	1,135,252	1,270,108	1,520,109	1,723,571	1,982,107	2,378,528	2,532,770	2,848,855	3,233,198	3,815,173
Public administration	640,649	866,917	1,076,215	1,278,881	1,440,913	1,652,556	2,026,815	2,282,763	2,579,522	2,985,562	3,493,107
Education	188,733	223,409	236,813	251,022	268,594	289,617	333,060	392,507	455,308	519,820	610,788
Health	118,972	174,789	200,933	233,032	275,726	327,658	383,360	454,990	532,339	627,520	737,964
Other social and personal services	81,548	88,770	99,329	107,542	117,284	129,482	147,221	176,775	202,422	232,119	269,257
Gross value added before adjustments	8,568,274	11,380,737	13,093,179	14,739,490	16,447,886	19,198,125	22,712,088	25,838,765	29,655,726	34,493,309	41,187,342
less FISIM	-80,000	-105,382	-120,588	-141,723	-169,661	-208,281	-260,029	-328,478	-358,049	-432,285	-497,128
Gross value added at current basic prices	8,488,274	11,275,355	12,972,591	14,597,767	16,278,225	18,989,844	22,452,059	25,510,287	29,297,677	34,061,023	40,690,214
add Taxes on products	612,000	831,707	999,001	1,367,527	1,663,043	1,958,559	2,329,620	2,702,359	2,995,802	3,471,939	4,027,449
GDP at current market prices	9,100,274	12,107,062	13,971,592	15,965,294	17,941,268	20,948,403	24,781,679	28,212,646	32,293,479	37,532,962	44,717,663

r: revised

p: provisional

Table 4: Shares of Gross Domestic Product at Current Prices by Economic Activity

	Percentage										
Economic Activity	2001	2003	2004	2005	2006	2007	2008	2009	2010	2011r	2012p
Agriculture, Hunting and Forestry	29.0	28.7	29.5	27.6	26.2	25.8	25.7	24.6	24.1	23.7	24.7
Crops	21.4	21.8	22.4	20.5	19.2	19.0	19.0	18.4	17.8	17.4	17.6
Livestock	5.0	4.7	4.8	5.0	4.8	4.7	4.7	4.0	3.8	3.7	4.6
Hunting and Forestry	2.5	2.3	2.3	2.2	2.2	2.1	2.0	2.2	2.4	2.5	2.5
Fishing	1.7	1.6	1.5	1.4	1.3	1.3	1.2	1.4	1.4	1.4	1.4
Industry and construction	18.0	21.0	20.8	20.8	20.8	21.2	21.0	22.0	22.4	22.7	22.1
Mining and quarrying	1.8	2.4	2.6	2.9	3.2	3.5	3.4	3.3	3.3	3.3	3.5
Manufacturing	8.4	8.3	8.1	7.9	7.8	7.8	7.8	8.6	9.0	9.3	8.4
Electricity, gas	2.2	1.9	1.8	1.7	1.5	1.6	1.7	1.7	1.8	1.8	1.9
Water supply	0.5	0.4	0.4	0.4	0.4	0.4	0.4	0.4	0.4	0.3	0.3
Construction	5.2	8.0	7.9	7.8	7.8	7.8	7.7	7.9	8.0	8.0	8.1
Services	45.5	42.7	42.0	42.5	43.3	43.3	43.8	43.6	43.9	44.0	43.9
Trade and repairs	13.0	12.0	11.4	11.0	11.4	11.5	11.6	11.8	12.1	12.2	12.3
Hotels and restaurants	2.8	2.4	2.3	2.5	2.6	2.7	2.6	2.3	2.3	2.3	2.3
Transport	5.4	4.8	4.6	4.4	4.3	4.2	4.2	5.0	5.1	5.3	5.3
Communications	1.2	1.3	1.5	1.7	2.1	2.3	2.5	2.1	2.1	2.2	2.3
Financial intermediation	1.5	1.7	1.6	1.7	1.7	1.6	1.6	1.7	1.8	1.8	1.8
Real estate and business services	10.3	9.4	9.1	9.5	9.6	9.5	9.6	9.0	8.8	8.6	8.5
Public administration	7.0	7.2	7.7	8.0	8.0	7.9	8.2	8.1	8.0	8.0	7.8
Education	2.1	1.8	1.7	1.6	1.5	1.4	1.3	1.4	1.4	1.4	1.4
Health	1.3	1.4	1.4	1.5	1.5	1.6	1.5	1.6	1.6	1.7	1.7
Other social and personal services	0.9	0.7	0.7	0.7	0.7	0.6	0.6	0.6	0.6	0.6	0.6
Gross value added before adjustments	94.2	94.0	93.7	92.3	91.7	91.6	91.6	91.6	91.8	91.9	92.1
less FISIM	-0.9	-0.9	-0.9	-0.9	-0.9	-1.0	-1.0	-1.2	-1.1	-1.2	-1.1
Gross value added at current basic prices	93.3	93.1	92.8	91.4	90.7	90.7	90.6	90.4	90.7	90.7	91.0
add Taxes on products	6.7	6.9	7.2	8.6	9.3	9.3	9.4	9.6	9.3	9.3	9.0
Gross Domestic Product at current market prices	100.0	100.0	100.0	100.0	100.0	100.0	100.0	100.0	100.0	100.0	100.0

r: revised

p: provisional

Table 4a: Annual Growth Rates of Gross Domestic Product at 2001 Prices by Economic Activity

Economic Activity											Percentage
	2001	2003	2004	2005	2006	2007	2008	2009	2010	2011r	2012p
Agriculture, Hunting and Forestry	4.9	3.1	5.9	4.3	3.8	4.0	4.6	3.2	4.2	3.6	4.3
Crops	5.3	3.2	6.6	4.4	4.0	4.5	5.1	3.4	4.4	3.5	4.7
Livestock	4.0	2.2	4.1	4.4	2.4	2.4	2.6	2.3	3.4	3.9	3.1
Forestry and hunting	3.6	3.0	2.7	3.6	4.6	2.9	3.4	3.5	4.1	3.5	2.4
Fishing	4.8	6.0	6.7	6.0	5.0	4.5	5.0	2.7	1.5	1.2	2.9
Industry and construction	6.6	10.9	10.9	10.4	8.5	9.5	8.6	7.0	8.2	6.9	7.8
Mining and quarrying	13.9	17.1	16.0	16.1	15.6	10.7	2.5	1.2	2.7	2.2	7.8
Manufacturing	5.0	9.0	9.4	9.6	8.5	8.7	9.9	8.0	7.9	7.8	8.2
Electricity, gas	5.9	7.2	7.5	9.4	-1.9	10.9	5.4	8.4	10.2	1.5	6.0
Water supply	3.5	4.5	5.2	4.3	6.2	6.5	6.6	5.6	6.3	4.0	5.4
Construction	7.6	13.8	13.0	10.1	9.5	9.7	10.5	7.5	10.2	9.0	7.8
Services	6.4	7.8	7.8	8.0	7.8	8.1	8.5	7.2	8.2	7.9	8.0
Trade and repairs	6.4	9.7	5.8	6.7	9.5	9.8	10.0	7.5	8.2	8.1	7.7
Hotels and restaurants	4.8	3.2	3.6	5.6	4.3	4.4	4.5	4.4	6.1	4.6	4.8
Transport	4.9	5.0	8.6	6.7	5.3	6.5	6.9	6.0	7.0	6.7	7.1
Communications	8.7	15.6	17.4	18.8	19.2	20.1	20.5	21.9	22.1	19.0	20.6
Financial intermediation	6.9	10.7	8.3	10.8	11.4	10.2	11.9	9.0	10.1	10.7	13.2
Real estate and business services	4.2	6.5	6.8	7.5	7.3	7.0	7.1	6.8	7.0	6.5	6.7
Public administration	10.5	9.6	13.6	11.4	6.5	6.7	7.0	4.4	6.5	6.8	5.8
Education	11.4	2.8	4.0	4.0	5.0	5.5	6.9	7.1	7.3	7.4	6.5
Health	5.6	8.7	7.8	8.1	8.5	8.8	9.0	6.7	6.9	5.4	5.6
Other social and personal services	3.1	2.0	3.0	2.6	3.7	3.2	3.1	3.2	3.5	3.0	3.8
Gross value added before adjustments	6.0	6.9	7.8	7.4	6.8	7.3	7.5	6.1	7.1	6.5	7.0
<i>less</i> FISIM	2.5	11.7	10.1	11.8	14.9	15.3	11.0	8.7	9.1	11.2	12.7
Gross Value Added at constant 2001 basic prices	6.0	6.9	7.8	7.4	6.7	7.2	7.4	6.0	7.1	6.4	6.9
<i>Add</i> Taxes on products	6.0	6.9	7.8	7.4	6.8	6.9	7.8	5.8	6.7	6.5	7.3
GDP at constant 2001 market prices	6.0	6.9	7.8	7.4	6.7	7.1	7.4	6.0	7.0	6.4	6.9

r: revised

p: provisional

Table 5: Implicit Deflators of Gross Domestic Product by Economic Activity (2001 = 100)

Economic Activity	2001	2003	2004	2005	2006	2007	2008	2009	2010	2011r	2012p
Agriculture Hunting and Forestry	100.0	122.1	136.4	140.1	144.1	159.2	179.3	189.3	203.5	224.4	267.2
Crops	100.0	124.5	138.0	138.5	140.5	155.1	174.2	185.9	197.6	217.1	248.8
Livestock	100.0	116.6	133.0	150.8	161.4	180.1	207.1	196.5	207.5	226.4	322.6
Forestry & hunting	100.0	111.9	128.6	132.6	142.0	156.0	173.5	206.8	250.3	288.7	335.5
Fishing	100.0	107.9	111.6	114.7	116.9	128.5	130.9	171.8	194.7	226.8	261.1
Industry and construction	100.0	127.7	131.5	136.3	141.1	153.4	165.5	184.5	198.9	219.9	236.4
Mining & quarrying	100.0	131.6	140.7	155.1	169.0	196.8	216.9	240.3	266.7	305.3	348.4
Manufacturing	100.0	112.3	115.6	118.5	120.1	128.7	139.4	162.4	179.2	199.6	198.8
Electricity, gas	100.0	101.4	101.8	103.3	107.2	117.2	139.5	146.6	158.3	187.0	215.3
Water supply	100.0	114.4	124.0	132.7	138.1	145.3	149.7	158.4	162.5	172.9	188.7
Construction	100.0	159.7	161.8	166.1	169.9	181.7	190.7	208.1	217.2	232.0	260.4
Services	100.0	107.7	113.3	121.3	128.8	139.1	153.1	162.0	172.7	186.5	205.1
Trade & repairs	100.0	103.5	107.2	110.5	117.7	126.7	137.1	148.2	160.2	174.3	193.4
Hotels & restaurants	100.0	104.0	111.8	130.7	145.9	170.2	188.9	177.1	198.1	215.1	242.2
Transport	100.0	106.7	108.4	112.5	116.5	126.0	137.9	176.7	192.9	219.2	242.5
Communications	100.0	112.2	122.3	138.0	156.2	169.3	176.4	141.1	134.0	132.1	138.0
Financial intermediation	100.0	120.0	124.1	129.6	131.5	137.3	143.6	155.9	168.3	178.4	189.1
Real estate & business services	100.0	106.2	111.3	123.9	131.0	140.8	157.7	157.3	165.3	176.2	194.8
Public administration	100.0	113.1	123.5	131.7	139.4	149.8	171.7	185.2	196.5	213.0	235.6
Education	100.0	107.6	109.7	111.8	113.9	116.4	125.3	137.9	149.1	158.5	174.8
Health	100.0	124.5	132.7	142.5	155.3	169.6	182.1	202.5	221.8	248.0	276.2
Other social & personal services	100.0	104.5	113.6	119.8	126.0	134.9	148.7	173.1	191.5	213.2	238.2
Gross value added excluding adjustments	100.0	115.9	123.6	129.6	135.4	147.3	162.2	173.9	186.4	203.6	227.2
less FISIM	100.0	108.5	112.8	118.6	123.6	131.6	148.0	172.0	171.8	186.6	190.4
Gross value added at basic prices	100.0	116.0	123.7	129.7	135.5	147.5	162.4	174.0	186.6	203.8	227.8
Taxes on products	100.0	118.6	132.1	168.3	191.6	211.1	233.0	255.5	265.5	288.9	312.3
Gross domestic product at market prices	100.0	116.1	124.3	132.3	139.3	151.8	167.1	179.5	191.9	209.5	233.4

r: revised

p: provisional

Table 6: Gross Domestic Product at 2001 Prices by Economic Activity

	TShs million										
Economic Activity	2001	2003	2004	2005	2006	2007	2008	2009	2010	2011r	2012p
Agriculture, Hunting and Forestry	2,636,193	2,850,956	3,017,988	3,148,384	3,268,238	3,399,648	3,554,488	3,669,646	3,824,428	3,960,673	4,129,431
Crops	1,945,945	2,122,361	2,262,725	2,361,930	2,457,373	2,567,955	2,698,921	2,790,684	2,913,474	3,015,446	3,157,172
Livestock	459,448	483,001	503,000	525,109	537,498	550,398	564,708	577,922	597,572	620,877	640,125
Forestry and hunting	230,800	245,594	252,263	261,345	273,367	281,295	290,859	301,039	313,382	324,350	332,135
Fishing	153,660	173,892	185,543	196,676	206,510	215,734	226,521	232,637	236,126	238,960	245,890
Industry and construction	1,638,459	1,988,081	2,204,619	2,433,261	2,639,902	2,889,519	3,138,241	3,357,703	3,633,664	3,883,366	4,184,808
Mining and quarrying	159,979	219,000	254,000	295,000	341,000	377,559	386,998	391,642	402,331	411,182	443,154
Manufacturing	762,400	893,000	977,000	1,071,000	1,162,000	1,263,435	1,388,515	1,499,596	1,618,064	1,744,273	1,887,303
Electricity, gas	196,860	223,953	240,708	263,218	258,347	286,507	301,978	327,344	360,733	366,144	388,113
Water supply	43,840	47,128	49,557	51,700	54,905	58,474	62,333	65,824	69,955	72,753	76,682
Construction	475,380	605,000	683,354	752,343	823,650	903,544	998,416	1,073,297	1,182,581	1,289,013	1,389,556
Services	4,139,962	4,806,587	5,182,094	5,596,784	6,035,932	6,527,561	7,085,136	7,594,661	8,214,209	8,860,652	9,567,176
Trade and repairs	1,182,797	1,405,698	1,486,931	1,585,906	1,736,631	1,906,821	2,097,503	2,254,816	2,439,711	2,637,328	2,840,402
Hotels and restaurants	250,978	275,836	285,732	301,873	314,921	328,859	343,658	358,779	380,664	398,175	417,287
Transport	487,062	541,901	588,574	627,951	661,000	703,965	752,539	797,691	853,529	910,715	975,376
Communications	112,783	144,039	169,158	200,900	239,537	287,684	346,659	422,577	515,967	614,001	740,485
Financial intermediation	140,000	170,643	184,775	204,694	228,000	251,280	281,120	306,339	337,356	373,453	422,748
Real estate and business services	936,440	1,068,732	1,141,014	1,226,790	1,316,000	1,408,120	1,508,097	1,610,647	1,723,392	1,835,413	1,958,386
Public administration	640,649	766,760	871,169	970,786	1,033,488	1,102,951	1,180,158	1,232,313	1,312,414	1,401,658	1,482,954
Education	188,733	207,606	215,910	224,547	235,774	248,742	265,905	284,704	305,402	328,002	349,322
Health	118,972	140,437	151,370	163,572	177,520	193,142	210,525	224,654	240,058	253,021	267,190
Other social and personal services	81,548	84,935	87,461	89,765	93,061	95,998	98,974	102,141	105,716	108,887	113,025
Gross value added before adjustments	8,568,274	9,819,516	10,590,244	11,375,105	12,150,582	13,032,462	14,004,385	14,854,646	15,908,427	16,943,651	18,127,304
less FISIM	-80,000	-97,154	-106,931	-119,497	-137,287	-158,292	-175,704	-190,990	-208,370	-231,708	-261,135
Gross value added at constant 2001 basic prices	8,488,274	9,722,362	10,483,313	11,255,608	12,013,295	12,874,170	13,828,681	14,663,656	15,700,057	16,711,943	17,866,169
Add Taxes on products	612,000	701,372	756,422	812,482	867,868	927,751	999,664	1,057,645	1,128,507	1,201,860	1,289,596
GDP at constant 2001 market prices	9,100,274	10,423,734	11,239,735	12,068,090	12,881,163	13,801,921	14,828,345	15,721,301	16,828,563	17,913,803	19,155,765

r: revised

p: provisional

Table 7: Shares of Gross Domestic Product at 2001 Prices by Economic Activity

	Percentage										
Economic Activity	2001	2003	2004	2005	2006	2007	2008	2009	2010	2011r	2012p
Agriculture, Hunting and Forestry	29.0	27.4	26.9	26.1	25.4	24.6	24.0	23.3	22.7	22.1	21.6
Crops	21.4	20.4	20.1	19.6	19.1	18.6	18.2	17.8	17.3	16.8	16.5
Livestock	5.0	4.6	4.5	4.4	4.2	4.0	3.8	3.7	3.6	3.5	3.3
Forestry and hunting	2.5	2.4	2.2	2.2	2.1	2.0	2.0	1.9	1.9	1.8	1.7
Fishing	1.7	1.7	1.7	1.6	1.6	1.6	1.5	1.5	1.4	1.3	1.3
Industry and construction	18.0	19.1	19.6	20.2	20.5	20.9	21.2	21.4	21.6	21.7	21.8
Mining and quarrying	1.8	2.1	2.3	2.4	2.6	2.7	2.6	2.5	2.4	2.3	2.3
Manufacturing	8.4	8.6	8.7	8.9	9.0	9.2	9.4	9.5	9.6	9.7	9.9
Electricity, gas	2.2	2.1	2.1	2.2	2.0	2.1	2.0	2.1	2.1	2.0	2.0
Water supply	0.5	0.5	0.4	0.4	0.4	0.4	0.4	0.4	0.4	0.4	0.4
Construction	5.2	5.8	6.1	6.2	6.4	6.5	6.7	6.8	7.0	7.2	7.3
Services	45.5	46.1	46.1	46.4	46.9	47.3	47.8	48.3	48.8	49.5	49.9
Trade and repairs	13.0	13.5	13.2	13.1	13.5	13.8	14.1	14.3	14.5	14.7	14.8
Hotels and restaurants	2.8	2.6	2.5	2.5	2.4	2.4	2.3	2.3	2.3	2.2	2.2
Transport	5.4	5.2	5.2	5.2	5.1	5.1	5.1	5.1	5.1	5.1	5.1
Communications	1.2	1.4	1.5	1.7	1.9	2.1	2.3	2.7	3.1	3.4	3.9
Financial intermediation	1.5	1.6	1.6	1.7	1.8	1.8	1.9	1.9	2.0	2.1	2.2
Real estate and business services	10.3	10.3	10.2	10.2	10.2	10.2	10.2	10.2	10.2	10.2	10.2
Public administration	7.0	7.4	7.8	8.0	8.0	8.0	8.0	7.8	7.8	7.8	7.7
Education	2.1	2.0	1.9	1.9	1.8	1.8	1.8	1.8	1.8	1.8	1.8
Health	1.3	1.3	1.3	1.4	1.4	1.4	1.4	1.4	1.4	1.4	1.4
Other social and personal services	0.9	0.8	0.8	0.7	0.7	0.7	0.7	0.6	0.6	0.6	0.6
Gross value added before adjustments	94.2	94.2	94.2	94.3	94.3	94.4	94.4	94.5	94.5	94.6	94.6
less FISIM	-0.9	-0.9	-1.0	-1.0	-1.1	-1.1	-1.2	-1.2	-1.2	-1.3	-1.4
Gross value added at constant 2001 basic prices	93.3	93.3	93.3	93.3	93.3	93.3	93.3	93.3	93.3	93.3	93.3
Add Taxes on products	6.7	6.7	6.7	6.7	6.7	6.7	6.7	6.7	6.7	6.7	6.7
Gross Domestic Product at constant 2001 market prices	100.0	100.0	100.0	100.0	100.0	100.0	100.0	100.0	100.0	100.0	100.0

r: revised

p: provisional

Table 8: Gross Domestic Product of Agriculture and Fishing at Current Prices

	TShs. million										
Economic activity	2001	2003	2004	2005	2006	2007	2008	2009	2010	2011r	2012p
Agriculture	2,636,193	3,479,646	4,116,444	4,410,478	4,708,556	5,413,257	6,374,476	6,945,213	7,782,138	8,887,273	11,033,445
Crops	1,945,945	2,641,586	3,122,896	3,272,143	3,452,690	3,983,327	4,700,326	5,187,080	5,757,659	6,545,372	7,854,446
Livestock	459,448	563,136	669,021	791,823	867,772	990,996	1,169,375	1,135,527	1,239,996	1,405,535	2,064,723
Forestry and Hunting	230,800	274,924	324,527	346,512	388,094	438,934	504,774	622,606	784,484	936,367	1,114,276
Fishing	153,660	187,693	207,025	225,658	241,454	277,189	296,592	399,715	459,673	541,919	641,903
Total Agriculture and Fishing	2,789,853	3,667,339	4,323,469	4,636,136	4,950,010	5,690,446	6,671,068	7,344,928	8,241,811	9,429,192	11,675,348

Table 9: Gross Domestic Product of Agriculture and Fishing at 2001 Prices

	TShs. million										
Economic activity	2001	2003	2004	2005	2006	2007	2008	2009	2010	2011r	2012p
Agriculture	2,636,193	2,850,956	3,017,988	3,148,384	3,268,238	3,399,648	3,554,488	3,669,646	3,824,428	3,960,673	4,129,431
Crops	1,945,945	2,122,361	2,262,725	2,361,930	2,457,373	2,567,955	2,698,921	2,790,684	2,913,474	3,015,446	3,157,172
Livestock	459,448	483,001	503,000	525,109	537,498	550,398	564,708	577,922	597,572	620,877	640,125
Forestry and Hunting	230,800	245,594	252,263	261,345	273,367	281,295	290,859	301,039	313,382	324,350	332,135
Fishing	153,660	173,892	185,543	196,676	206,510	215,734	226,521	232,637	236,126	238,960	245,890
Total Agriculture and Fishing	2,789,853	3,024,848	3,203,531	3,345,060	3,474,748	3,615,382	3,781,009	3,902,282	4,060,554	4,199,633	4,375,320

Table 10: Gross Domestic Product of Industry and Construction at Current Prices

	TShs. million										
Economic activity	2001	2003	2004	2005	2006	2007	2008	2009	2010	2011r	2012p
1. Mining and quarrying	159,979	288200	357368	457431	576363	742,932	839,513	941,094	1,072,847	1,255,231	1,543,935
2. Manufacturing	762,400	1002827	1129558	1269145	1395282	1,625,504	1,935,975	2,434,754	2,899,094	3,482,066	3,751,523
3. Electricity, gas	196,860	227081	244977	271925	276915	335,898	421,216	479,768	571,130	684,847	835,513
4. Water supply	43,840	53925	61474	68605	75809	84,982	93,310	104,263	113,691	125,823	144,696
5. Construction	475,380	966452	1105886	1249651	1399609	1,641,741	1,904,420	2,233,885	2,568,968	2,990,279	3,618,238
Total Industry and Construction	1,638,459	2,538,485	2,899,263	3,316,757	3,723,978	4,431,057	5,194,434	6,193,765	7,225,731	8,538,246	9,893,904

r: revised

p: provisional

Table 11: Gross Domestic Product of Industry and Construction at 2001 Prices

	TShs. million										
Economic activity	2001	2003	2004	2005	2006	2007	2008	2009	2010	2011r	2012p
1. Mining and quarrying	159,979	219,000	254,000	295,000	341,000	377,559	386,998	391,642	402,331	411,182	443,154
2. Manufacturing	762,400	893,000	977,000	1,071,000	1,162,000	1,263,435	1,388,515	1,499,596	1,618,064	1,744,273	1,887,303
3. Electricity, gas	196,860	223,953	240,708	263,218	258,347	286,507	301,978	327,344	360,733	366,144	388,113
4. Water supply	43,840	47,128	49,557	51,700	54,905	58,474	62,333	65,824	69,955	72,753	76,682
5. Construction	475,380	605,000	683,354	752,343	823,650	903,544	998,416	1,073,297	1,182,581	1,289,013	1,389,556
Total Industry and Construction	1,638,459	1,988,081	2,204,619	2,433,261	2,639,902	2,889,519	3,138,241	3,357,703	3,633,664	3,883,366	4,184,808

Table 12: Gross Domestic Product of Services at Current Prices

	TShs. million										
Economic activity	2001	2003	2004	2005	2006	2007	2008	2009	2010	2011r	2012p
1. Trade and repairs	1,182,797	1,454,527	1,593,717	1,752,826	2,044,421	2,416,506	2,875,642	3,341,496	3,909,550	4,597,631	5,494,169
2. Hotels and restaurants	250,978	286,883	319,365	394,417	459,584	559,722	649,278	635,414	754,037	856,439	1,010,598
3. Transport	487,062	577,977	637,720	706,291	769,830	886,844	1,037,608	1,409,636	1,646,704	1,996,102	2,365,380
4. Communications	112,783	161,623	206,877	277,216	374,241	487,132	611,350	596,230	691,627	811,265	1,022,193
5. Financial intermediation	140,000	204,766	229,370	265,261	299,734	345,000	403,727	477,492	567,822	666,216	799,459
6. Real estate and business services	936,440	1,135,252	1,270,108	1,520,109	1,723,571	1,982,107	2,378,528	2,532,770	2,848,855	3,233,198	3,815,173
7. Public administration	640,649	866,917	1,076,215	1,278,881	1,440,913	1,652,556	1,999,593	2,282,763	2,579,522	2,985,562	3,493,107
8. Education	188,733	223,409	236,813	251,022	268,594	289,617	333,060	392,507	455,308	519,820	610,788
9. Health	118,972	174,789	200,933	233,032	275,726	327,658	383,360	454,990	532,339	627,520	737,964
10. Other social and personal services	81,548	88,770	99,329	107,542	117,284	129,482	147,221	176,775	202,422	232,119	269,257
Total Services	4,139,962	5,174,913	5,870,447	6,786,597	7,773,898	9,076,622	10,819,365	12,300,072	14,188,185	16,525,870	19,618,090

r: revised

p: provisional

Table 13: Gross Domestic Product of Services at 2001 Prices

Economic activity	TShs. million										
	2001	2003	2004	2005	2006	2007	2008	2009	2010	2011r	2012p
1. Trade and repairs	1,182,797	1,405,698	1,486,931	1,585,906	1,736,631	1,906,821	2,097,503	2,254,816	2,439,711	2,637,328	2,840,402
2. Hotels and restaurants	250,978	275,836	285,732	301,873	314,921	328,859	343,658	358,779	380,664	398,175	417,287
3. Transport	487,062	541,901	588,574	627,951	661,000	703,965	752,539	797,691	853,529	910,715	975,376
4. Communications	112,783	144,039	169,158	200,900	239,537	287,684	346,659	422,577	515,967	614,001	740,485
5. Financial intermediation	140,000	170,643	184,775	204,694	228,000	251,280	281,120	306,339	337,356	373,453	422,748
6. Real estate and business services	936,440	1,068,732	1,141,014	1,226,790	1,316,000	1,408,120	1,508,097	1,610,647	1,723,392	1,835,413	1,274,882
7. Public administration	640,649	766,760	871,169	970,786	1,033,488	1,102,951	1,180,158	1,232,313	1,312,414	1,401,658	1,482,954
8. Education	188,733	207,606	215,910	224,547	235,774	248,742	265,905	284,704	305,402	328,002	349,322
9. Health	118,972	140,437	151,370	163,572	177,520	193,142	210,525	224,654	240,058	253,021	267,190
10. Other social and personal services	81,548	84,935	87,461	89,765	93,061	95,998	98,974	102,141	105,716	108,887	113,025
Total Services	4,139,962	4,806,587	5,182,094	5,596,784	6,035,932	6,527,561	7,085,136	7,594,661	8,214,209	8,860,652	8,883,672

r: revised

p: provisional

VII. EXPENDITURE ON GROSS DOMESTIC PRODUCT

Generally, there are three approaches in computing GDP namely income, production and expenditure. In the expenditure approach, GDP is derived as the sum of all final uses of goods and services, measured at purchasers' prices, plus net exports. The components involved in estimating GDP are final consumption by households and government, gross fixed capital formation, changes in inventories, also export and imports of goods and services.

Chart 2: Composition of Expenditure on GDP at Current Market Prices (Percentage)

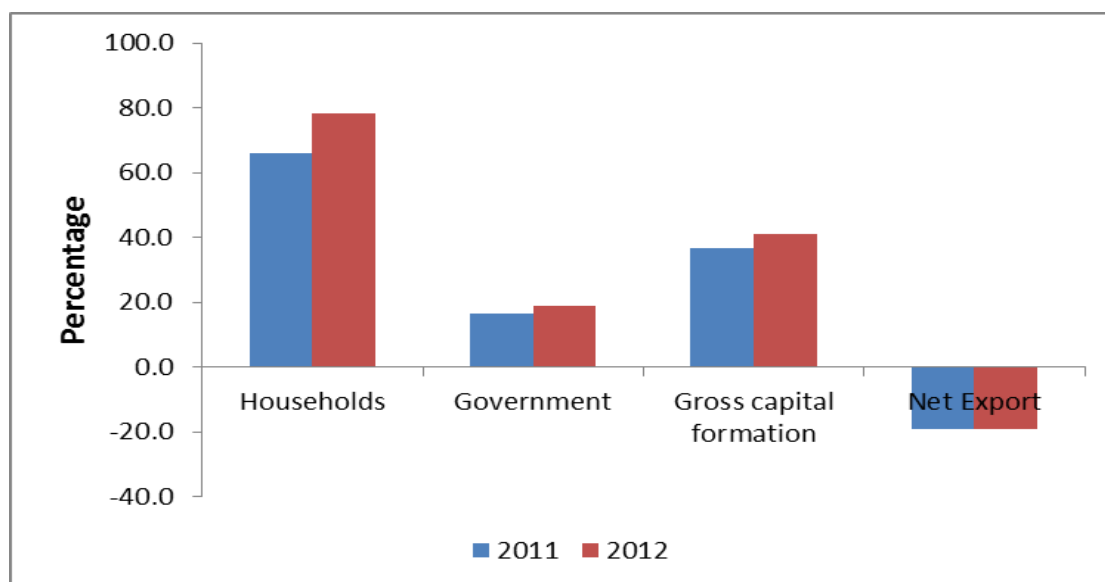


Table 14: Gross Domestic Product by Type of Expenditure at Current Market Prices

Type of Expenditure	TShs. million										
	2001	2003	2004	2005	2006	2007	2008	2009	2010	2011r	2012p
GDP at market prices	9,100,274	12,107,061	13,971,593	15,965,296	17,941,268	20,948,403	24,781,679	28,212,646	32,293,479	37,532,962	44,717,663
Final consumption expenditure	7,901,761	10,300,882	11,714,438	13,386,429	15,340,093	18,270,124	20,781,786	23,403,570	25,417,627	30,961,308	36,517,320
Households	6,822,466	8,442,113	9,352,717	10,581,908	12,195,212	14,231,135	16,460,068	18,476,811	20,209,449	24,815,658	29,399,092
Government	1,079,295	1,858,769	2,361,721	2,804,521	3,144,881	4,038,989	4,321,718	4,926,759	5,208,178	6,145,650	7,118,227
Gross capital formation	1,587,743	2,332,184	3,153,367	4,023,968	4,957,782	6,209,741	7,381,257	8,173,221	10,342,536	13,762,066	15,451,608
Gross fixed capital formation	1,547,100	2,288,797	3,095,522	3,959,563	4,883,490	6,119,013	7,274,314	8,020,970	10,177,693	13,534,066	15,118,447
Changes in inventories	40,643	43,387	57,845	64,405	74,292	90,728	106,943	152,252	164,843	228,000	333,161
Exports of goods and services	1,547,644	2,247,385	2,745,596	3,324,425	4,047,990	5,095,773	6,230,729	6,553,198	8,988,306	11,656,768	13,113,682
Exports of goods fob	746,080	1,263,064	1,551,554	1,891,705	2,176,987	2,762,367	3,636,824	3,833,992	6,003,332	7,962,151	9,398,148
Exports of services	801,564	984,321	1,194,042	1,432,720	1,871,003	2,333,406	2,593,906	2,719,206	2,984,974	3,694,618	3,715,533
Imports of goods and services	-1,936,874	-2,761,744	-3,641,808	-4,746,646	-6,404,597	-8,609,710	-9,612,093	-9,917,343	-12,676,916	-18,847,180	-20,364,946
Imports of goods fob	-1,367,474	-2,008,052	-2,615,149	-3,383,801	-4,837,467	-6,606,784	-7,698,354	-7,622,953	-10,063,228	-15,383,213	-16,227,332
Imports of services	-569,400	-753,692	-1,026,659	-1,362,845	-1,567,130	-2,002,926	-1,913,739	-2,294,390	-2,613,688	-3,463,966	-4,137,614

r: revised

p: provisional

Table 15: Gross Domestic Product by Type of Expenditure at 2001 Market Prices

	TShs. million										
Type of Expenditure	2001	2003	2004	2005	2006	2007	2008	2009	2010	2011r	2012p
GDP at constant market prices	9,100,274	10,423,735	11,239,734	12,068,090	12,881,163	13,801,921	14,828,345	15,721,301	16,828,563	17,913,803	19,155,765
Final consumption expenditure	7,901,761	9,052,080	9,748,544	10,855,260	11,735,476	12,517,666	13,337,233	13,838,779	15,010,200	16,876,872	18,177,192
Households	6,822,466	7,410,284	7,866,521	8,748,590	9,456,059	10,021,704	10,512,581	10,870,070	11,538,082	12,911,937	13,728,300
Government	1,079,295	1,641,796	1,882,023	2,106,670	2,279,417	2,495,962	2,824,652	2,968,710	3,472,119	3,964,935	4,448,892
Gross capital formation	1,587,743	1,945,657	2,144,198	2,535,317	2,938,619	3,358,305	3,616,866	3,982,283	4,385,837	5,762,294	6,107,144
Gross fixed capital formation	1,547,100	1,903,295	2,100,914	2,493,633	2,893,604	3,313,177	3,571,629	3,928,805	4,332,960	5,694,294	6,035,424
Changes in inventories	40,643	42,362	43,284	41,684	45,015	45,128	45,237	53,478	52,877	68,000	71,720
Exports of goods and services	1,547,644	1,991,479	2,157,615	2,449,820	2,369,701	2,768,705	3,311,236	3,479,706	4,533,457	5,779,880	6,185,287
Exports of goods fob	746,080	1,049,683	1,120,049	1,256,370	1,004,797	1,089,513	1,441,642	1,519,800	2,401,333	3,159,584	4,699,074
Exports of services	801,564	941,796	1,037,566	1,193,450	1,364,904	1,679,192	1,869,594	1,959,906	2,132,124	2,620,296	1,486,213
Imports of goods and services	-1,936,874	-2,565,481	-2,810,623	-3,772,307	-4,162,633	-4,842,754	-5,436,991	-5,579,468	-7,100,931	-10,505,242	-11,313,859
Imports of goods fob	-1,367,474	-1,865,350	-2,018,283	-2,689,212	-3,146,854	-3,861,190	-4,499,134	-4,455,068	-5,822,908	-8,790,408	-9,015,184
Imports of services	-569,400	-700,131	-792,340	-1,083,095	-1,015,779	-981,564	-937,856	-1,124,400	-1,278,024	-1,714,835	-2,298,674

r: revised

p: provisional

Table 16: Implicit Deflators of Gross Domestic Product by Type of Expenditure (2001 = 100)

Implied deflators	2001	2003	2004	2005	2006	2007	2008	2009	2010	2011r	2012p
Gross domestic product at market prices	100	116	124	132	139	152	167	179	192	210	233
Final consumption expenditure	100	114	120	123	131	146	156	169	169	183	203
Households	100	114	119	121	129	142	157	170	175	192	217
Government	100	113	125	133	138	162	153	166	150	155	160
Gross capital formation	100	119	147	158	169	185	204	205	236	239	253
Gross fixed capital formation	100	120	147	158	169	185	204	204	235	238	250
Changes in inventories	100	102	134	155	165	201	236	285	312	335	465
Exports of goods and services	100	113	127	136	171	183	188	188	198	202	212
Exports of goods fob	100	120	139	151	217	252	252	252	250	252	200
Exports of services	100	105	115	120	137	139	139	139	140	141	250
Imports of goods and services	100	108	130	126	154	178	177	178	175	179	180
Imports of goods fob	100	108	130	126	154	171	171	171	170	175	180
Imports of services	100	108	130	126	154	204	204	204	200	202	180

r: revised

p: provisional

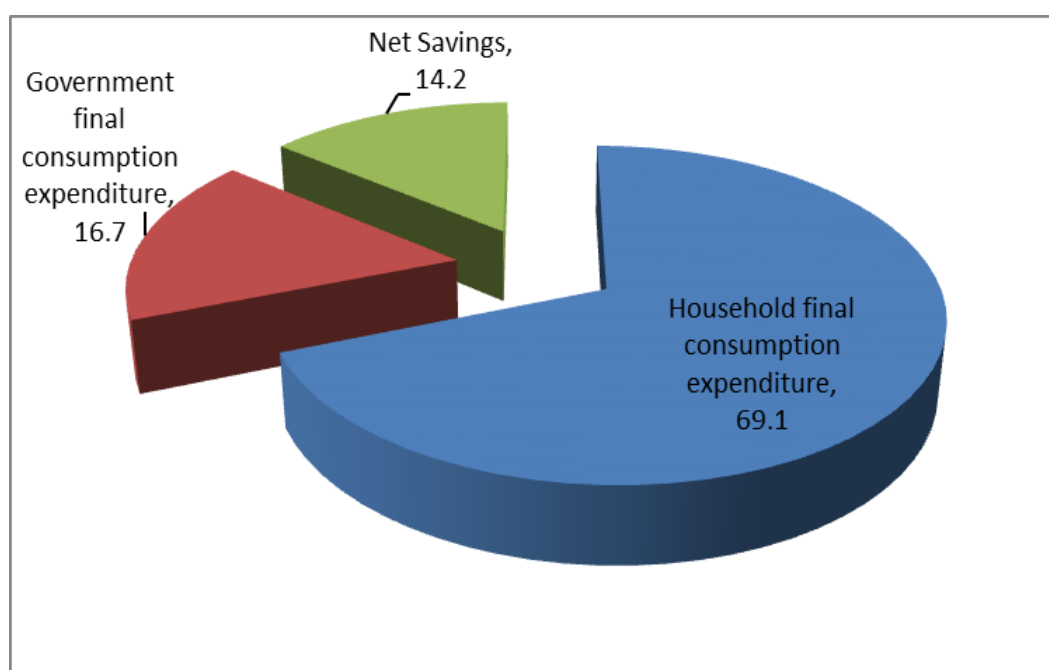
VIII. NET DISPOSABLE INCOME

Disposable Income is the sum of all current transfers except social transfers in kind receivable less all current transfers payable.

National Disposable Income is the sum of all current transfers in cash or in kind receivable by resident institutional units from non-resident units less all current transfers in cash or in kind payable by resident institutional units to non-resident units.

Alternatively, net National Disposable Income can be derived from net national income. Net national disposable income can be derived by summing up final consumption expenditure by household, government and net national savings.

Chart 3: Composition of Net National Disposable Income at Current Market Prices, 2012



In 2012, net National Disposable Income at current market price increased to TShs. **42,550,912** million from TShs. **35,772,688** million in 2011, equivalent to an increase of about 18.9 percent. The increase was attributed to a significant increase in final consumption expenditures by household and government.

Table 17: National Disposable Income at Current Market Prices and Its Appropriation

Heading	TShs. million										
	2001	2003	2004	2005	2006	2007	2008	2009	2010	2011r	2012p
1. Compensation of employees	1,440,278	1,680,075	1,814,481	1,959,639	2,190,876	2,504,171	3,443,235	3,601,624	3,781,706	4,084,242	4,533,509
2. <i>Plus:</i> Operating surplus	6,026,709	8,383,991	9,793,468	11,032,410	12,247,730	14,431,836	16,706,522	19,433,633	22,851,102	27,104,053	33,039,795
3. <i>Equal:</i> Net Domestic Product at basic price	7,466,987	10,064,066	11,607,949	12,992,049	14,438,606	16,936,007	20,149,758	23,035,257	26,632,808	31,188,295	37,573,303
4. <i>Minus:</i> Net primary income from ROW	-38,939	-45,340	-193,957	-211,431	-80,733	-96,007	-141,282	-97,866	-109,899	-305,546	-315,120
5. <i>Equal:</i> Net National Income at basic price.	7,428,048	10,018,726	11,413,992	12,780,618	14,357,873	16,840,000	20,008,476	22,937,392	26,522,909	30,882,748	37,258,183
6 <i>Plus:</i> Taxes on products	612,000	831,707	999,001	1,367,527	1,663,043	1,958,559	2,329,620	2,702,359	2,995,802	3,471,939	4,027,449
8. <i>Equal:</i> Net National Income at m.p.	8,040,048	10,850,433	12,412,993	14,148,145	16,020,916	18,798,559	22,338,096	25,639,751	29,518,711	34,354,687	41,285,632
9. <i>Plus:</i> Net current Transfers from ROW	509,384	584,611	697,093	532,359	751,840	812,802	748,946	907,683	1,185,204	1,418,001	1,265,279
10 <i>Equal:</i> Net National Disposable Income at m.p	8,549,432	11,435,044	13,110,086	14,680,504	16,772,756	19,611,361	23,087,042	26,547,434	30,703,914	35,772,688	42,550,912
11. Government final consumption expenditure	1,079,295	1,858,769	2,361,721	2,804,521	3,144,881	4,038,989	4,321,718	4,926,759	5,208,178	6,145,650	7,118,227
12. <i>Plus:</i> Household final consumption expenditure	6,822,466	8,442,113	9,352,717	10,581,908	12,195,212	14,231,135	16,432,846	18,476,811	20,209,449	24,815,658	29,399,092
13. <i>Plus:</i> Net Savings	647,671	1,134,162	1,395,648	1,294,075	1,432,663	1,341,237	2,332,478	3,143,864	5,286,288	4,811,381	6,033,592
14. <i>Equal:</i> Net National Disposable Income at m.p.	8,549,432	11,435,044	13,110,086	14,680,504	16,772,756	19,611,361	23,087,042	26,547,434	30,703,914	35,772,688	42,550,912

mp: market price

ROW: Rest of the world

r: revised

p: provisional

Table 18: Capital Finance at Current Prices

Heading	TShs. million										
	2001	2003	2004	2005	2006	2007	2008	2009	2010	2011r	2012p
13. Net Savings	647,671	1,134,162	1,395,648	1,294,075	1,432,663	1,341,237	2,332,478	3,143,864	5,286,288	4,811,381	6,033,592
2. Consumption on fixed capital	1,021,287	1,211,289	1,364,642	1,605,718	1,839,619	2,053,837	2,302,302	2,475,030	2,664,869	2,872,729	3,116,911
3. Net capital transfer from ROW	335,078	372,019	319,852	714,892	6,635,983	1,148,994	757,533	743,501	854,741	1,083,508	1,213,425
4. Finance of Gross Accumulation	2,004,036	2,717,469	3,080,142	3,614,685	9,908,265	4,544,068	5,392,313	6,362,395	8,805,898	8,767,617	10,363,927
5. Changes in Inventories	40,643	43,387	57,845	64,405	74,292	90,728	106,943	152,252	164,843	228,000	333,161
6. Gross fixed capital formation	1,547,101	2,288,797	3,095,522	3,959,563	4,883,489	6,119,013	7,274,314	8,020,970	10,177,693	13,534,066	15,118,447
7. Net Lending(+)/Borrowing(-) from ROW	416,292	385,285	-73,225	-409,283	4,950,484	-1,665,673	-1,988,945	-1,810,826	-1,536,638	-4,994,449	-5,087,680
8. Gross Accumulation	2,004,036	2,717,469	3,080,142	3,614,685	9,908,265	4,544,068	5,392,313	6,362,395	8,805,898	8,767,617	10,363,927

Table 19: Relation Among National Accounting Aggregates at Current Basic Prices

Heading	TShs. million										
	2001	2003	2004	2005	2006	2007	2008	2009	2010	2011r	2012p
1. Gross Domestic Product at basic price.	8,488,274	11,275,355	12,972,591	14,597,767	16,278,225	18,989,844	22,452,059	25,510,287	29,297,677	34,061,023	40,690,214
2. Net primary income from ROW	-38,939	-45,340	-193,957	-211,431	-80,733	-96,007	-141,282	-97,866	-109,899	-305,546	-315,120
2.1 Primary Income receivable	71,925	90,725	88,631	91,323	100,755	109,815	145,481	205,070	225,223	285,405	305,440
2.2 Less Primary income payable	110,864	136,065	282,588	302,754	181,488	205,822	286,763	302,935	335,122	590,951	620,561
3. Equals: Gross National Product at b.p	8,449,335	11,230,015	12,778,634	14,386,336	16,197,492	18,893,837	22,310,777	25,412,422	29,187,778	33,755,477	40,375,094
4. Less: Consumption of Fixed Capital	1,021,287	1,211,289	1,364,642	1,605,718	1,839,619	2,053,837	2,302,302	2,475,030	2,664,869	2,872,729	3,116,911
5. Equals: Net National Product at basic price	7,428,048	10,018,726	11,413,992	12,780,618	14,357,873	16,840,000	20,008,476	22,937,392	26,522,909	30,882,748	37,258,183
6. Plus: Net Current Transfers from abroad	509,384	584,611	697,093	532,360	751,840	812,802	748,946	907,683	1,185,204	1,418,001	1,265,279
6.1 Current Transfers receivable	574,982	650,039	767,956	608,556	834,399	903,114	844,823	1,007,751	1,296,869	1,563,181	1,470,730
6.2 Less: Current transfer payable	65,598	65,428	70,863	76,196	82,559	90,312	95,877	100,068	111,665	145,180	205,451
7. Equals: Net National Disposable Income at b.p	7,937,432	10,603,337	12,111,085	13,312,978	15,109,713	17,652,802	20,757,422	23,845,075	27,708,113	32,300,749	38,523,462
8. Gross National Disposable Income at b.p	8,958,719	11,814,626	13,475,727	14,918,696	16,949,332	19,706,639	23,059,723	26,320,105	30,372,982	35,173,478	41,640,373
9. Gross National Income at basic prices	8,449,335	11,230,015	12,778,634	14,386,336	16,197,492	18,893,837	22,310,777	25,412,422	29,187,778	33,755,477	40,375,094

Row: Rest of the world

bp: basic price

r: revised

p: provisional

Table 20: Relation Among National Accounting Aggregates at Current Market Prices

Heading	TShs. million										
	2001	2003	2004	2005	2006	2007	2008	2009	2010	2011r	2012p
1. Gross Domestic Product at m.p.	9,100,274	12,107,062	13,971,592	15,965,294	17,941,268	20,948,403	24,781,679	28,212,646	32,293,479	37,532,962	44,717,663
2. <i>Plus:</i> Net primary income from ROW	-38,939	-45,340	-193,957	-211,431	-80,733	-72,884	-141,283	-97,866	-109,899	-305,546	-315,120
3. <i>Equals:</i> Gross National Income at m.p.	9,061,335	12,061,722	13,777,636	15,753,865	17,860,535	20,875,519	24,640,396	28,114,780	32,183,580	37,227,416	44,402,543
4. <i>Less:</i> Consumption of Fixed Capital	1,021,287	1,211,289	1,364,642	1,605,718	1,839,619	2,053,837	2,302,302	2,475,030	2,664,869	2,872,729	3,116,910.73
5. <i>Equals:</i> Net National Income at m.p.	8,040,047	10,850,433	12,412,994	14,148,147	16,020,916	18,798,559	22,338,094	25,639,751	29,518,711	34,354,687	41,285,632
6. <i>Plus:</i> Net Current Transfers received from abroad	509,384	584,611	697,093	532,360	751,840	852,988	738,117	907,683	1,185,204	1,418,001	1,265,279
6.1 Current Transfers receivable	574,982	650,039	767,956	608,556	834,399	950,919	834,060	1,007,751	1,296,869	1,563,181	1,470,730
6.2 <i>Less:</i> Current transfer payable	65,598	65,428	70,863	76,196	82,559	97,931	95,943	100,068	111,665	145,180	205,451
7. <i>Equals:</i> Net National Disposable Income at m.p.	8,549,431	11,435,044	13,110,087	14,680,507	16,772,756	19,674,670	23,076,211	26,547,433	30,703,915	35,772,688	42,550,912

mp: market price

ROW: Rest of the world

r: revised

p:provisional

IX. EXTERNAL TRANSACTIONS

Current external balance is the balancing item in the Rest of the World Account (ROW). The account records all transactions between domestic economy and the rest of the world. Total external transaction receivable includes export of goods and services, primary income and current transfers receivable. While, external transaction payable comprises imports of goods and services, primary income and current transfers payable. Therefore, the balance is the current external balance.

Primary Income

These are incomes that accrue to institutional units as a consequence of their involvement in the processes of production and ownership of assets that may be needed for the purposes of production.

Exports

Exported goods are valued at f.o.b (free on board). This is a value in the market at the frontier of the exporting country, excluding the costs of transport and insurance.

Imports

Imported goods are valued at c.i.f. (cost, insurance, freight) which is the value in the market at the frontier of the importing country, including transport charges and insurance.

Exports and Imports of Goods and Services

Exports and imports of goods and services consist of sales, barter, grants or gifts of goods and services from residents to non-residents. On Tanzania Mainland, the exports of goods comprise traditional and non-traditional commodities while imported goods are classified as consumer, intermediate and capital goods. The share of imports to GDP at current market prices was 45.5 percent in 2012 as compared to 50.2 percent in 2011. However, the value of imports was more than exports by Shs. 7,251,264 million in 2012 as compared to Shs. 7,190,411 million in 2011.

Chart 4: Percentage Shares of Export and Imports of Goods and Services to GDP at Current Market Prices

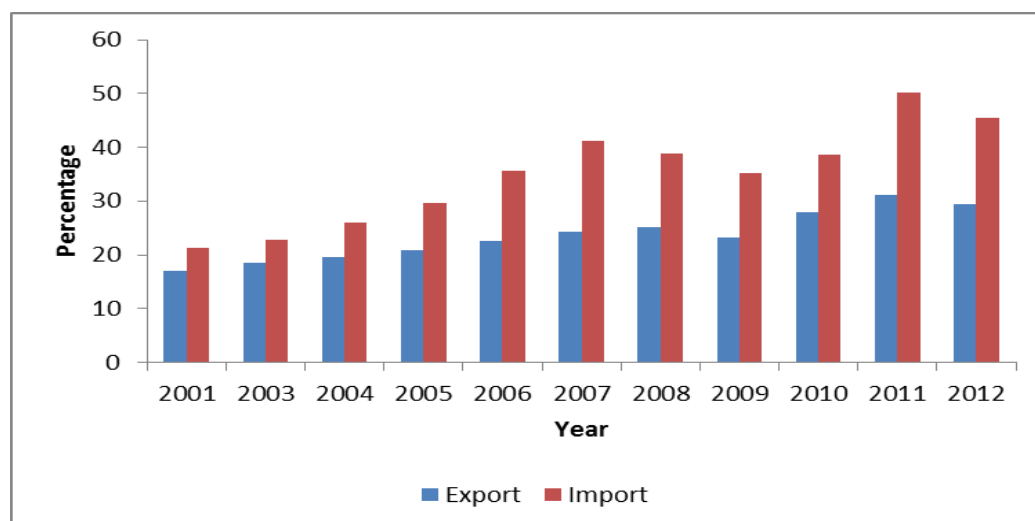


Table 21: International Transactions at Current Prices

Heading	TShs. millions										
	2001	2003	2004	2005	2006	2007	2008	2009	2010	2011r	2012p
1. Export of goods and services:	1,547,644	2,247,385	2,745,596	3,324,425	4,047,990	5,095,773	6,230,730	6,553,198	8,988,306	11,656,768	13,113,682
1.1 Export of Goods	746,080	1,263,064	1,551,554	1,891,705	2,176,987	2,762,367	3,636,824	3,833,992	6,003,332	7,962,151	9,398,148
1.2 Export of services	801,564	984,321	1,194,042	1,432,720	1,871,003	2,333,406	2,593,906	2,719,206	2,984,974	3,694,618	3,715,533
2. Primary incomes receivable	71,925	90,725	88,631	91,323	100,755	109,815	145,481	205,070	225,223	285,405	305,440
3. Current transfers receivable	574,982	650,039	767,956	608,556	834,399	950,919	844,823	1,007,751	1,296,869	1,563,181	1,470,730
4. Total external transactions receivable by the Nation	2,194,551	2,988,149	3,602,183	4,024,304	4,983,144	6,156,507	7,221,034	7,766,019	10,579,565	13,505,354	14,889,852
5. Import of goods and services:	1,936,874	2,761,744	3,641,808	4,746,646	6,404,597	8,609,710	9,612,093	9,917,343	12,676,916	18,847,180	20,364,946
5.1 Import of goods	1,367,474	2,008,052	2,615,149	3,383,801	4,837,467	6,606,784	7,698,354	7,622,953	10,063,228	15,383,213	16,227,332
5.2 Import of services	569,400	753,692	1,026,659	1,362,845	1,567,130	2,002,926	1,913,739	2,294,390	2,613,688	3,463,966	4,137,614
6. Primary incomes payable	110,864	136,065	282,588	302,754	181,488	182,699	286,763	302,935	335,122	590,951	620,561
7. Current transfers payable	65,598	65,428	70,863	76,196	82,559	97,931	95,877	100,068	111,665	145,180	205,451
8. Current external balance	81,215	24,912	-393,076	-1,101,293	-1,685,500	-1,907,826	-2,773,699	-2,554,327	-2,322,213	-6,077,957	-6,301,105
9. Total external transactions paid by the Nation	2,194,550	2,988,149	3,602,183	4,024,303	4,983,144	6,156,507	7,221,034	7,766,019	10,579,565	13,505,354	14,889,852
10. Current external balance	81,215	24,912	-393,076	-1,101,293	-1,685,500	-1,907,826	-2,773,699	-2,554,327	-2,322,213	-6,077,957	-6,301,105
11. Errors and omissions	335,078	372,019	319,852	692,010	6,635,984	242,153	784,754	743,501	785,575	1,083,508	1,213,425
12. Net lending (+) or Borrowing (-) from the ROW	416,293	385,285	-73,225	-409,283	4,950,484	-1,665,673	-1,988,945	-1,810,826	-1,536,638	-4,994,449	-5,087,680

r: revised
p: provisional

X. CAPITAL FORMATION

Gross Fixed Capital Formation (GFCF) is the total value of a producer's acquisition, less disposals of fixed assets during the accounting period plus additions to the value of non-produced assets realized by the productive activity of institutional units. This includes tangible and non-tangible (improved) assets. The National Accounts of Tanzania Mainland contain estimates of gross fixed capital formation by activity. The estimates are classified by ownership i.e. public and private sectors. GFCF by type of assets is reported under buildings, other works and equipment.

Gross Capital Formation at current prices increased to TShs. 15,451,608 million in 2012 from TShs. 13,762,066 million in 2011.. The 12.3 percent change was attributed to an increase in buildings and other works.

Table 22: Gross Capital Formation at Current Prices

Type of Capital formation	TShs. Million										
	2001	2003	2004	2005	2006	2007	2008	2009	2010	2011r	2012p
A. Gross Fixed capital formation	1,547,101	2,288,797	3,095,522	3,959,563	4,883,489	6,119,013	7,274,314	8,020,970	10,177,693	13,534,066	15,118,447
1. Building and works	980,101	1,598,236	2,249,203	2,883,296	3,152,974	3,828,841	4,550,645	5,459,438	6,553,111	7,822,998	9,424,461
1.1 Buildings:	693,422	1,032,053	1,440,216	1,849,109	2,011,176	2,467,985	2,940,930	3,538,708	4,260,122	5,131,110	6,183,118
1.1.1 Residential	145,210	173,687	266,443	349,977	390,219	484,652	581,583	709,531	865,628	1,056,066	1,288,401
1.1.2 Rural own-account	302,994	348,806	467,417	552,039	585,329	701,224	820,432	951,702	1,103,974	1,280,610	1,485,507
1.1.3 Non-residential	245,218	509,560	706,356	947,093	1,035,628	1,282,108	1,538,914	1,877,475	2,290,520	2,794,434	3,409,210
1.2. Other works:	286,679	566,183	808,987	1,034,187	1,141,798	1,360,856	1,609,716	1,920,729	2,292,989	2,691,887	3,241,343
1.2.1 Land improvement	17,013	42,408	110,434	119,416	125,256	137,170	149,515	182,409	222,539	271,497	331,226
1.2.2 Roads and Bridges	30,600	35,589	36,920	39,580	43,239	51,455	61,797	75,393	91,979	65,314	105,307
1.2.3 Water	117,056	400,163	479,828	629,842	701,791	827,411	984,619	1,153,974	1,352,457	1,585,080	1,857,713
1.2.4 Others	122,010	88,023	181,805	245,349	271,512	344,820	413,784	508,954	626,014	769,997	947,096
2. Equipment:	567,000	690,561	846,319	1,076,267	1,730,515	2,290,172	2,723,669	2,561,532	3,624,582	5,711,068	5,693,985
2.1 Transport equipment	166,000	252,439	293,604	410,919	629,648	817,913	956,958	972,933	1,613,525	1,713,512	1,820,353
2.2 Other equip. and Machinery	401,000	438,122	552,715	665,348	1,100,867	1,472,259	1,766,711	1,588,599	2,011,057	3,997,556	3,873,632
B. Changes in Inventories	40,643	43,387	57,845	64,405	74,292	90,728	106,943	152,252	164,843	228,000	333,161
C. Gross Capital Formation	1,587,744	2,332,184	3,153,367	4,023,968	4,957,781	6,209,741	7,381,257	8,173,221	10,342,536	13,762,066	15,451,608

r: revised

p: provisional

Table 23: Gross Capital Formation by Public and Private Sectors at Current Prices

	TShs. million										
Type of Capital formation	2001	2003	2004	2005	2006	2007	2008	2009	2010	2011r	2012p
A. Gross Fixed Capital Formation	1,547,100	2,288,796	3,095,522	3,959,563	4,883,489	6,119,013	7,274,314	8,020,970	10,177,693	13,534,066	15,118,447
1. Central Government:	413,099	753,610	953,157	1,039,910	1,134,578	1,352,763	1,628,172	1,921,243	2,267,067	2,675,139	3,043,003
2. Parastatals:	44,896	72,745	119,245	162,413	141,822	141,570	148,299	157,197	166,629	176,626	180,483
3. Institutions:	55,642	89,624	120,042	138,362	141,822	144,659	152,971	163,067	173,830	185,302	190,420
4. Private	1,033,463	1,372,817	1,903,078	2,618,878	3,465,267	4,480,021	5,344,872	5,779,463	7,570,168	10,496,998	11,704,541
B. Changes in Inventories	40,643	43,387	57,845	64,405	74,292	90,728	106,943	152,252	164,843	228,000	333,161
C. Gross Capital Formation	1,587,743	2,332,184	3,153,367	4,023,968	4,957,781	6,209,741	7,381,257	8,173,221	10,342,536	13,762,066	15,451,608

r: revised

p: provisional

Table 24: Gross Capital Formation at 2001 Prices

Type of Capital formation	TShs. million										
	2001	2003	2004	2005	2006	2007	2008	2009	2010	2011r	2012p
A. Gross Fixed Capital Formation	1,547,100	1,903,295	2,100,914	2,493,633	2,893,605	3,313,177	3,571,629	3,928,805	4,332,960	5,694,294	6,035,424
Building and works	980,101	1,270,396	1,389,837	1,542,767	1,729,932	1,928,766	2,043,709	2,163,320	2,289,414	2,423,738	2,586,777
1. Buildings:	693,422	829,334	920,052	955,456	1,012,774	1,076,793	1,141,401	1,211,008	1,284,866	1,363,255	1,446,455
1.1 Residential	145,210	141,750	176,418	185,882	206,555	230,059	244,363	260,491	277,683	296,010	315,547
1.2 Rural own-account	302,994	271,724	283,345	295,766	314,832	321,112	339,078	357,405	376,705	397,047	418,488
1.3 Non-residential	245,218	415,860	460,289	473,808	491,387	525,622	557,960	593,111	630,477	670,197	712,420
2. Other works:	286,679	441,062	469,785	587,311	717,158	851,973	902,309	952,312	1,004,548	1,060,483	1,140,322
2.1 Land improvement	17,013	32,988	46,779	75,517	111,237	143,282	151,009	159,013	167,440	176,314	187,775
2.2 Roads and Bridges	30,600	28,289	22,813	21,178	23,724	26,018	27,666	25,875	23,234	21,027	30,489
2.3 Water	117,056	311,305	311,908	359,854	396,306	439,900	466,694	496,096	527,350	560,573	595,889
2.4 Others	122,010	68,480	88,285	130,762	185,891	242,773	256,940	271,329	286,523	302,568	326,169
3. Equipment:	567,000	642,156	711,078	963,108	1,163,673	1,384,410	1,527,920	1,765,485	2,043,546	3,270,556	3,448,647
3.1 Transport equipment	166,000	226,955	262,150	350,639	386,998	452,401	484,069	670,407	855,005	907,988	920,700
3.2 Other equip. and Machinery	401,000	415,201	448,928	612,469	776,675	932,009	1,043,851	1,095,078	1,188,541	2,362,568	2,527,947
B. Changes in Inventories	40,643	42,362	43,284	41,684	45,015	45,128	45,237	53,478	52,877	68,000	71,720
C. Gross Capital Formation	1,587,743	1,945,657	2,144,199	2,535,317	2,938,620	3,358,305	3,616,866	3,982,283	4,385,837	5,762,294	6,107,144

r: revised
p: provisional

Table 25: Gross Fixed Capital Formation at Current Prices by Kind of Economic Activity

											TShs. Million
Heading	2001	2003	2004	2005	2006	2007	2008	2009	2010	2011r	2012p
1. Agriculture (crops, Livestock, Forestry, Fishing and Hunting)	42,194	60,460	73,364	87,431	96,298	106,076	112,692	110,602	178,907	257,147	288,046
2. Mining and Quarrying	154,710	242,853	303,811	383,229	459,891	539,225	568,839	542,924	877,964	1,150,396	1,267,398
3. Manufacturing	253,162	373,206	490,923	607,853	731,344	890,814	1,004,038	1,066,783	1,501,918	1,989,508	2,208,485
4. Electricity and Water Supply	182,839	257,268	323,677	394,622	479,308	584,836	693,529	755,603	946,588	1,272,202	1,415,994
5. Construction	478,195	724,526	1,068,134	1,453,583	1,905,744	2,525,162	3,113,697	3,616,680	4,299,863	5,724,910	6,455,487
6. Wholesale and Retail Trade and Hotels and Restaurants	14,065	20,542	24,442	29,103	35,645	43,795	48,628	52,104	56,077	67,670	75,389
7. Transport, Storage and Communication	323,485	469,809	640,424	809,187	959,695	1,188,269	1,475,376	1,620,715	2,009,673	2,652,677	2,946,060
8. Financial intermediation, Real Estate and B.S	28,129	40,246	48,362	53,911	58,816	63,854	67,358	65,502	71,489	108,273	119,154
9. Public Administration, Education, Health and O.S	70,323	99,888	122,385	140,645	156,748	176,981	190,158	190,056	235,213	311,284	342,432
10. Gross Fixed Capital Formation	1,547,100	2,288,796	3,095,522	3,959,563	4,883,489	6,119,013	7,274,314	8,020,970	10,177,693	13,534,066	15,118,447

Note: B.S >> Business Services

O.S >> Other Services

XI. REGIONAL GROSS DOMESTIC PRODUCT

The compilation of Regional National Accounts in Tanzania Mainland follows the procedures recommended in the SNA 1993. The administrative demarcated area called “a Region” is the economic territory for the purpose of compilation of Regional National Accounts.

Coverage

The Regional GDP estimates cover all goods and services produced in a region. The estimates also include goods and services imported into the region.

The Central Register of Establishments (CRE) provides a frame from which samples are drawn purposely for data collection in the regions. CRE is a directory (list) of all operating establishments in Tanzania Mainland. The directory records all establishments engaging at least one worker on permanent basis.

Methodology

Regional Gross Domestic Product (RGDP) can either be compiled using the bottom up or top down approach. The bottom up approach makes use of the basic data by type of activities in the regions. In the top down approach, the total economy GDP is distributed to the regions using appropriate indicators by activity.

In Tanzania Mainland, the existing RGDP estimates are compiled using the top down approach; that is RGDP estimates at current prices are compiled from the National aggregates.

Importance:

The RGDP facilitates:

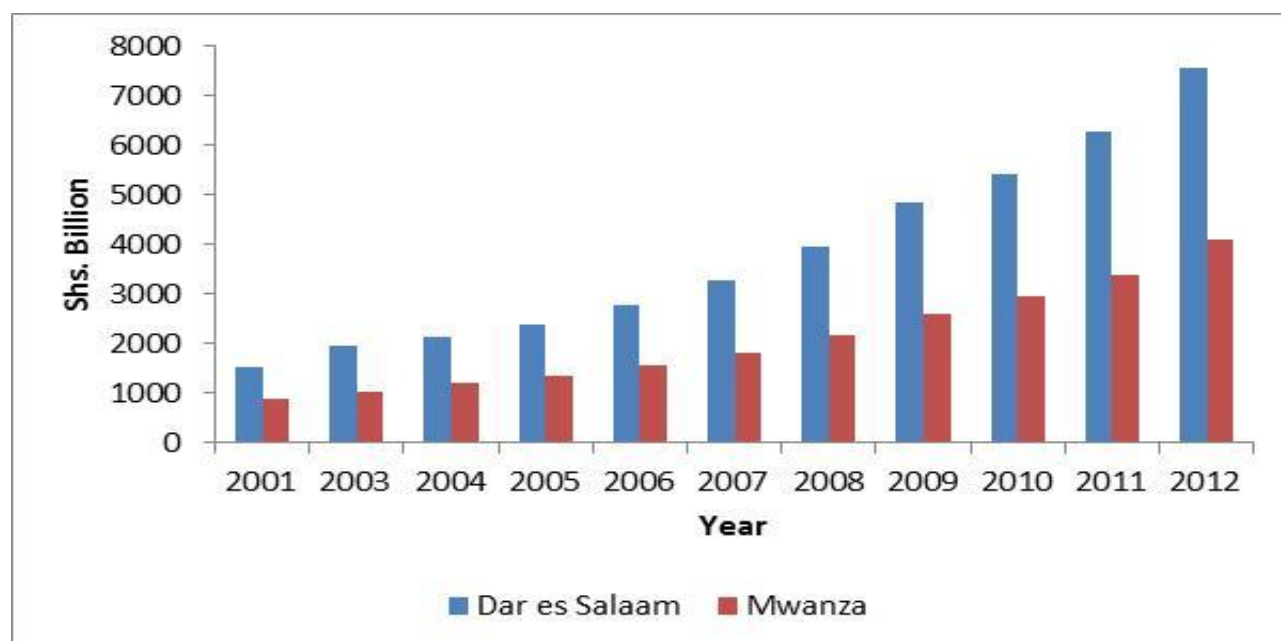
- (a) Monitoring and evaluation of the economic performance of the region;
- (b) Decision-making process in the region and formulation of economic policies;
- (c) Comparison of levels, shares and growth rates within regions in the country; and
- (d) Updating the Regional Social Economic Profiles.

Regions with the Largest Shares of GDP

For the past twelve years, Dar es Salaam and Mwanza regions contributed significantly to the total GDP at current prices. From the year 2001 to 2012, the average contribution by the two regions was about 26.1 percent, of which, 16.9 percent was contributed by Dar es Salaam and 9.1 percent was contributed by Mwanza. The share of the two regions is attributed to the concentration of economic activities such as Manufacturing, Mining, Trade and Hotels and Restaurants.

For the year 2012, the RGDP at current prices for Dar es Salaam region amounted to TShs. 7,571,790 million compared to TShs. 6,265,440 million recorded in the previous year, representing an increase of about 20.9 percent. The annual percentage change of RGDP between 2011 and 2012 for Mwanza region was 20.6.

Chart 5: Regional Gross Domestic Product for Dar es Salaam and Mwanza at Current Prices



Per Capita Gross Domestic Product

Per Capita Gross Domestic Product is obtained by dividing the Total Gross Domestic Product by the total population in a given year. It shows how much of the country's total income each person would get if this was distributed equally.

In the Tanzania Mainland economy, GDP per capita at current prices shows an increasing trend, ranging from TShs. 276,741 in 2001 to TShs. 1,025,038 in 2012. It increased by 17.9 percent in 2012 from 2011.

Chart 6: Per Capita Gross Domestic Product at Current Market Prices

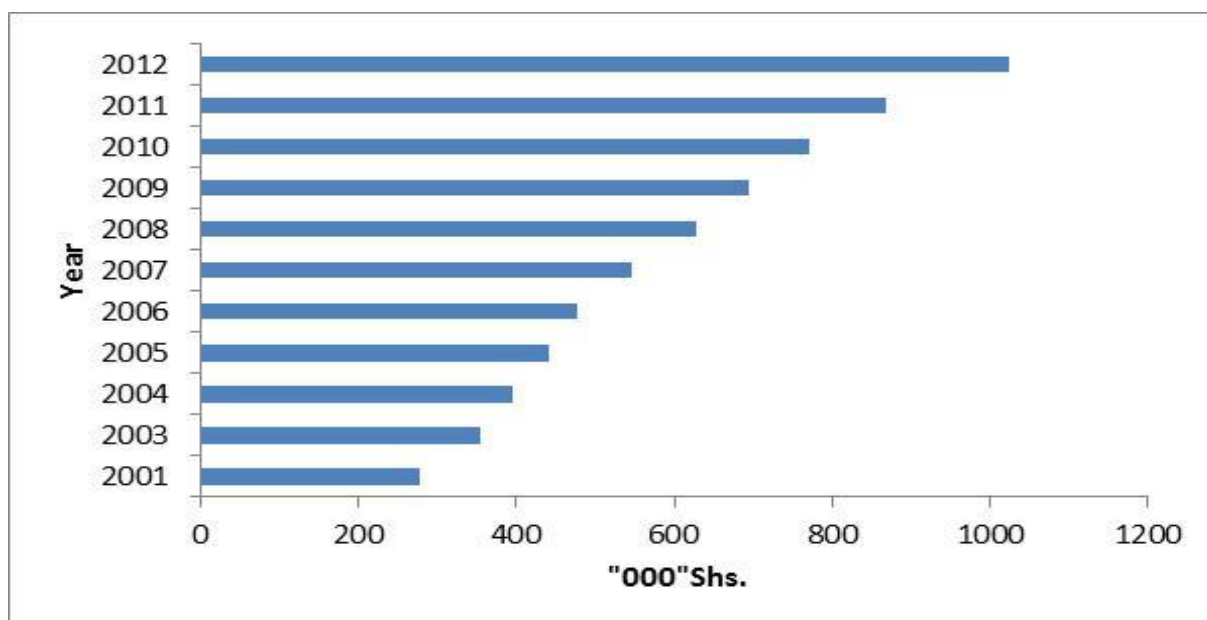


Table 26: Regional GDP at Current Market Prices

TShs. Million											
Region	2001	2003	2004	2005	2006	2007	2008	2009	2010	2011r	2012p
Dodoma	315,330	400,784	434,003	479,968	547,234	631,518	756,184	853,502	1,024,651	1,159,304	1,385,962
Arusha	695,300	479,243	607,098	723,809	812,478	946,310	1,145,878	1,317,752	1,573,945	1,776,833	2,132,007
Kilimanjaro	370,834	527,106	659,640	781,706	863,125	986,560	1,184,812	1,299,446	1,438,637	1,726,365	2,030,035
Tanga	402,206	516,106	744,687	922,026	998,179	1,169,234	1,215,266	1,332,846	1,501,150	1,781,976	2,099,264
Morogoro	433,578	541,620	767,188	863,198	966,740	1,133,052	1,255,325	1,376,781	1,574,261	1,851,114	2,184,518
Pwani	185,014	279,342	290,324	310,330	349,136	396,021	464,536	509,481	608,288	696,332	826,409
Dar -es salaam	1,530,654	1,958,790	2,114,612	2,397,247	2,780,274	3,266,242	3,959,818	4,848,914	5,428,503	6,265,440	7,571,790
Lindi	189,550	282,766	294,206	314,782	353,982	405,926	474,128	520,001	621,676	711,074	844,067
Mtwara	353,941	359,936	374,581	399,623	450,012	507,235	608,814	667,718	927,074	969,750	1,182,990
Ruvuma	289,588	464,103	537,463	651,835	698,397	839,466	1,006,828	1,104,241	1,191,028	1,453,168	1,704,552
Iringa	506,779	669,390	748,910	867,482	953,806	1,123,318	1,340,065	1,469,720	1,702,430	1,985,708	2,347,081
Mbeya	522,867	716,689	944,876	1,135,574	1,257,978	1,499,285	1,779,610	2,065,488	2,376,978	2,738,175	3,276,141
Singida	241,323	280,114	291,547	292,778	341,637	384,680	453,485	497,361	661,753	709,663	857,983
Tabora	313,721	447,496	551,501	685,103	733,406	860,404	1,029,411	1,139,970	1,242,423	1,501,447	1,766,533
Rukwa	297,632	429,981	483,240	547,334	611,089	724,781	871,896	974,823	1,092,300	1,293,386	1,529,289
Kigoma	225,235	440,418	466,714	514,225	575,350	636,324	751,978	840,748	906,042	1,099,643	1,295,169
Shinyanga	703,032	823,035	857,221	910,124	1,058,089	1,255,940	1,502,902	1,680,318	1,959,401	2,263,135	2,688,809
Kagera	345,897	577,162	602,560	643,605	746,076	843,809	1,001,251	1,119,448	1,260,688	1,488,061	1,760,458
Mwanza	872,115	1,029,028	1,190,370	1,347,027	1,548,825	1,812,176	2,155,982	2,594,149	2,958,739	3,392,475	4,090,594
Mara	305,676	546,139	582,914	641,655	726,076	807,383	961,438	1,054,459	1,171,243	1,402,578	1,649,850
Manyara	-	337,813	427,938	535,863	569,380	718,738	862,074	945,482	1,072,269	1,267,337	1,494,161
TANZANIA MAINLAND	9,100,274	12,107,062	13,971,592	15,965,294	17,941,268	20,948,403	24,781,679	28,212,646	32,293,479	37,532,962	44,717,663

r: revised

p: provisional

Table 27: Regional Shares of GDP at Current Market Prices

	Percentage										
Region	2001	2003	2004	2005	2006	2007	2008	2009	2010	2011r	2012p
Dodoma	3.47	3.31	3.11	3.01	3.05	3.01	3.05	3.03	3.17	3.09	3.10
Arusha	7.64	3.96	4.35	4.53	4.53	4.52	4.62	4.67	4.87	4.73	4.77
Kilimanjaro	4.07	4.35	4.72	4.90	4.81	4.71	4.78	4.61	4.45	4.60	4.54
Tanga	4.42	4.26	5.33	5.78	5.56	5.58	4.90	4.72	4.65	4.75	4.69
Morogoro	4.76	4.47	5.49	5.41	5.39	5.41	5.07	4.88	4.87	4.93	4.89
Pwani	2.03	2.31	2.08	1.94	1.95	1.89	1.87	1.81	1.88	1.86	1.85
Dar es salaam	16.82	16.18	15.14	15.02	15.50	15.59	15.98	17.19	16.81	16.69	16.93
Lindi	2.08	2.34	2.11	1.97	1.97	1.94	1.91	1.84	1.93	1.89	1.89
Mtwara	3.89	2.97	2.68	2.50	2.51	2.42	2.46	2.37	2.87	2.58	2.65
Ruvuma	3.18	3.83	3.85	4.08	3.89	4.01	4.06	3.91	3.69	3.87	3.81
Iringa	5.57	5.53	5.36	5.43	5.32	5.36	5.41	5.21	5.27	5.29	5.25
Mbeya	5.75	5.92	6.76	7.11	7.01	7.16	7.18	7.32	7.36	7.30	7.33
Singida	2.65	2.31	2.09	1.83	1.90	1.84	1.83	1.76	2.05	1.89	1.92
Tabora	3.45	3.70	3.95	4.29	4.09	4.11	4.15	4.04	3.85	4.00	3.95
Rukwa	3.27	3.55	3.46	3.43	3.41	3.46	3.52	3.46	3.38	3.45	3.42
Kigoma	2.48	3.64	3.34	3.22	3.21	3.04	3.03	2.98	2.81	2.93	2.90
Shinyanga	7.73	6.80	6.14	5.70	5.90	6.00	6.06	5.96	6.07	6.03	6.01
Kagera	3.80	4.77	4.31	4.03	4.16	4.03	4.04	3.97	3.90	3.96	3.94
Mwanza	9.58	8.50	8.52	8.44	8.63	8.65	8.70	9.19	9.16	9.04	9.15
Mara	3.36	4.51	4.17	4.02	4.05	3.85	3.88	3.74	3.63	3.74	3.69
Manyara	0.00	2.79	3.06	3.36	3.17	3.43	3.48	3.35	3.32	3.38	3.34
TANZANIA MAINLAND	100.00	100.00	100.00	100.00	100.00	100.00	100.00	100.00	100.00	100.00	100.00

r: revised
p: provisional

Table 28: Regional Per Capita GDP at Current Market Prices

	TShs.										
Region	2001	2003	2004	2005	2006	2007	2008	2009	2010	2011r	2012p
Dodoma	185,600	233,940	247,570	268,728	288,506	323,677	377,235	414,597	485,211	535,768	665,180
Arusha	332,612	362,005	440,602	506,902	550,650	621,356	729,676	814,569	945,437	1,038,097	1,258,334
Kilimanjaro	182,279	377,778	465,260	544,421	574,264	642,302	755,037	810,871	879,432	1,034,263	1,237,761
Tanga	229,192	310,698	440,305	537,227	569,319	636,262	646,284	692,939	763,203	886,343	1,026,432
Morogoro	246,231	302,282	417,184	458,877	501,138	573,651	620,921	665,618	744,234	856,126	984,686
Pwani	216,547	309,379	313,918	328,688	360,441	399,381	457,685	490,521	572,466	640,801	752,192
Dar es salaam	664,688	760,056	785,985	856,391	992,362	1,133,503	1,337,257	1,594,976	1,740,947	1,961,074	1,734,842
Lindi	220,906	354,823	364,047	385,378	415,586	466,839	534,268	574,282	673,096	754,949	976,192
Mtwara	316,463	315,567	322,871	339,784	368,787	407,062	478,660	514,520	700,436	718,741	930,862
Ruvuma	247,805	408,120	460,501	546,530	565,430	661,655	772,504	824,799	866,191	1,029,094	1,237,972
Iringa	296,583	443,007	488,254	558,444	589,607	681,130	797,739	859,875	979,882	1,125,503	1,428,243
Mbeya	241,734	340,459	438,214	515,887	536,133	618,610	711,201	800,021	892,877	998,210	1,210,065
Singida	219,542	254,111	258,470	254,509	279,386	305,655	350,294	373,694	483,922	505,435	625,974
Tabora	220,044	253,933	301,884	362,967	365,950	412,456	474,181	504,710	528,832	614,579	770,866
Rukwa	264,731	367,564	398,486	437,273	469,246	537,042	623,288	672,237	726,658	830,052	974,601
Kigoma	185,332	252,894	255,434	269,144	291,946	397,449	450,535	483,158	499,428	581,461	608,652
Shinyanga	275,556	286,342	288,554	297,409	322,806	368,201	423,431	455,008	510,023	565,973	856,333
Kagera	179,671	277,336	280,703	291,644	337,557	367,979	420,758	453,235	491,713	559,070	716,209
Mwanza	331,368	342,032	383,199	421,379	488,758	554,907	640,826	748,766	829,647	924,536	910,824
Mara	218,764	391,986	408,052	439,107	461,861	495,013	568,074	600,338	642,528	741,357	946,107
Manyara	-	318,594	388,542	469,489	475,255	578,697	669,166	707,159	772,364	879,014	1,048,437
TANZANIA MAINLAND	276,741	353,496	396,154	441,063	478,100	547,081	627,787	693,470	770,464	869,436	1,025,038

Note:

– Denotes that the region was non existent

r: revised

p: provisional

XII. APPENDICES

Appendix 2: Annual Average Rates of Growth of Total GDP at 2001 Prices

										Percentage
2001	2003	2004	2005	2006	2007	2008	2009	2010	2011r	2012p
8,488,274	9,722,362	10,483,313	11,255,608	12,013,295	12,874,170	13,828,681	14,663,656	15,700,057	16,711,943	17,866,169
2002	7.0	7.3	7.3	7.2	7.2	7.2	7.1	7.1	7.0	7.0
2003	6.9	7.4	7.4	7.2	7.2	7.2	7.1	7.1	7.0	7.0
2004		7.8	7.6	7.3	7.3	7.3	7.1	7.1	7.0	7.0
2005			7.4	7.0	7.1	7.2	6.9	7.0	6.9	6.9
2006				6.7	6.9	7.1	6.8	6.9	6.8	6.8
2007					7.2	7.3	6.9	6.9	6.8	6.8
2008						7.4	6.7	6.8	6.7	6.8
2009							6.0	6.6	6.5	6.6
2010								7.1	6.8	6.8
2011									6.4	6.7
2012										6.9

Appendix 3: Annual Average Rates of Growth of Agriculture and Fishing GDP at 2001 Prices

										Percentage
2001	2003	2004	2005	2006	2007	2008	2009	2010	2011r	2012p
2,789,853	3,024,848	3,203,531	3,345,060	3,474,748	3,615,382	3,781,009	3,902,282	4,060,554	4,199,633	4,375,320
2002	4.1	4.7	4.6	4.5	4.4	4.4	4.3	4.3	4.2	4.2
2003	3.2	4.6	4.5	4.4	4.3	4.3	4.2	4.2	4.1	4.1
2004		5.9	5.2	4.7	4.6	4.6	4.3	4.3	4.2	4.2
2005			4.4	4.1	4.1	4.2	4.0	4.0	3.9	4.0
2006				3.9	4.0	4.2	3.9	4.0	3.9	3.9
2007					4.0	4.3	3.9	4.0	3.9	3.9
2008						4.6	3.9	3.9	3.8	3.9
2009							3.2	3.6	3.6	3.7
2010								4.1	3.7	3.9
2011									3.4	3.8
2012										4.2

Appendix 4: Annual Average Rates of Growth of Industry and Construction GDP at 2001 Prices

										Percentage
2001	2003	2004	2005	2006	2007	2008	2009	2010	2011r	2012p
1,638,459	1988081	2,204,619	2,433,261	2,639,902	2,889,519	3,138,241	3,357,703	3,633,664	3,883,366	4,184,808
2002	10.2	10.4	10.4	10.0	9.9	9.7	9.4	9.3	9.0	8.9
2003	10.9	10.9	10.7	10.2	10.0	9.8	9.4	9.2	9.0	8.9
2004		10.9	10.6	9.9	9.8	9.6	9.1	9.0	8.7	8.6
2005			10.4	9.4	9.4	9.2	8.8	8.7	8.4	8.3
2006				8.5	9.0	8.9	8.4	8.4	8.1	8.1
2007					9.5	9.0	8.3	8.3	8.0	8.0
2008						8.6	7.8	7.9	7.7	7.7
2009							7.0	7.6	7.4	7.5
2010								8.2	7.5	7.6
2011									6.9	7.3
2012										7.8

r: revised

p: provisional

Appendix 5: Annual Average Rates of Growth of Services GDP at 2001 Prices (Put the methodology

										Percentage
2001	2003	2004	2005	2006	2007	2008r	2009	2010	2011r	2012p
4,139,962	4,806,587	5,182,094	5,596,784	6,035,932	6,527,561	7,085,136	7,594,661	8,214,209	8,860,652	9,567,176
2002	7.8	7.8	7.8	7.8	7.9	8.0	7.9	7.9	7.9	7.9
2003	7.8	7.8	7.9	7.9	7.9	8.0	7.9	7.9	7.9	7.9
2004		7.8	7.9	7.9	8.0	8.1	7.9	8.0	7.9	7.9
2005			8.0	7.9	8.0	8.1	7.9	8.0	8.0	8.0
2006				7.8	8.0	8.2	7.9	8.0	8.0	8.0
2007					8.1	8.3	8.0	8.0	8.0	8.0
2008						8.5	7.9	8.0	7.9	7.9
2009							7.2	7.7	7.7	7.8
2010								8.2	8.0	8.0
2011									7.9	7.9
2012										8.0

r: revised
p: provision

National Bureau of Statistics

Vision

“To become a one-stop center for official statistics and statistical services in Tanzania”

Mission

“To produce quality official statistics and services that meet needs of national and international stakeholders for evidence based planning and decision making”

More information is available at NBS website: www.nbs.go.tz

Contact person: Director General

National Bureau of Statistics

Box 796

Dar es Salaam

Tel: (+255) 22 2122722/3

Fax: (+255) 22 2130852

E-mail: dg@nbs.go.tz