



THE UNITED REPUBLIC OF TANZANIA

**QUARTERLY GROSS DOMESTIC PRODUCT OF  
TANZANIA MAINLAND  
FIRST QUARTER, 2009**



National Bureau of Statistics  
Ministry of Finance and Economic Affairs  
Dar es Salaam

**June, 2009**

---

---

## Table of Contents

1.0	Introduction .....	1
1.1	Economic performance .....	1
2.0	Agriculture .....	2
3.0	Fishing.....	4
4.0	Manufacturing .....	4
5.0	Mining and Quarrying.....	5
6.0	Electricity .....	6
7.0	Construction .....	6
8.0	Hotels and Restaurants .....	7
9.0	Transport and Communication.....	7
10.0	Financial Intermediation .....	7
11.0	Public Administration .....	8
12.0	Education.....	8
13.0	Health, Other Social, Community and Personal .....	8

### List of Annexes

Annex 1: Gross Value Added by Activity Constant 2001 Prices in Million Tshs .....	9
Annex 2: Gross Value Added by Activity Constant 2001 prices – Percentage Changes .....	15

---

---

## List of Graph

Figure 1: Growth Rates for the First Quarter, 2002-2009.....	2
Figure 2: Production / harvest of selected major Crops for the first Quarter 2008 - 2009.....	3
Figure 3: Index of Industrial Production for selected items for the first quarter 2008 – 2009 .....	5
Figure 4: First quarter GVA Growth rate for Mining and Quarrying, 2002-2009 .....	6

---

---

# QUARTERLY GROSS DOMESTIC PRODUCT FIRST QUARTER 2009

## 1.0 Introduction

This report presents the official Quarterly Gross Domestic Product (QGDP) estimates for Tanzania Mainland. It is the first set of results for first quarter of 2009. The compilation of QGDP follows the need of having appropriate policy interventions which can be achieved through reliable and frequent reports on recent economic developments.

## 1.1 Economic performance

In the report, the real growth rates are measured as the rate of change on QGDP for current year as compared to the QGDP for the previous year. For example, the real growth rate for the first QGDP for the year 2001 is compared to the first QGDP for the year 2000. However, in measuring the rate of growth due to seasonality effects, the change has been measured between the adjacent quarters in the same year.

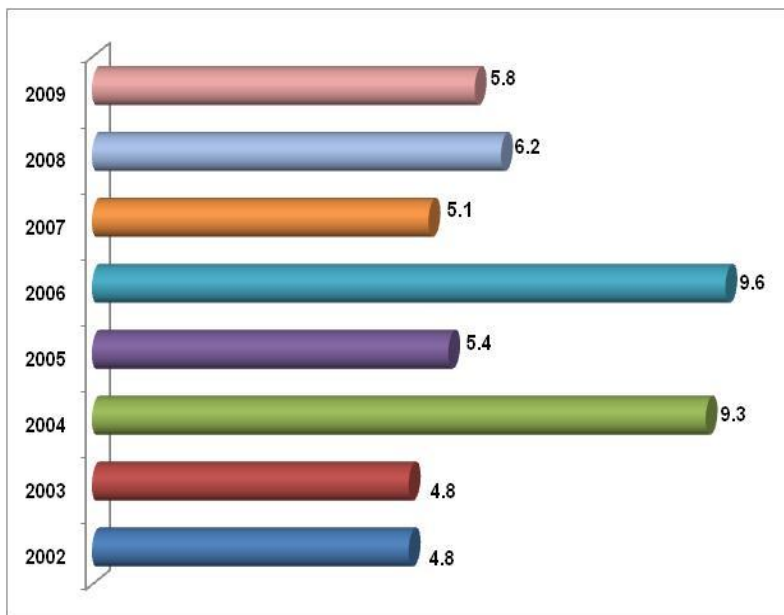
The Real Gross Domestic Product at market prices is estimated to have increased at a rate of 5.6 percent in the first quarter of 2009 compared to a rate of 7.1 percent in the first quarter of 2008.

---

---

In absolute terms, the QGDP for the quarter 2009 was 3,428,439 Million shillings in 2009 compared to shillings 3,245,322 Million shillings in 2008, (Annex 1)

**Figure 1: Growth Rates for the First Quarter, 2002-2009**



## 2.0 Agriculture

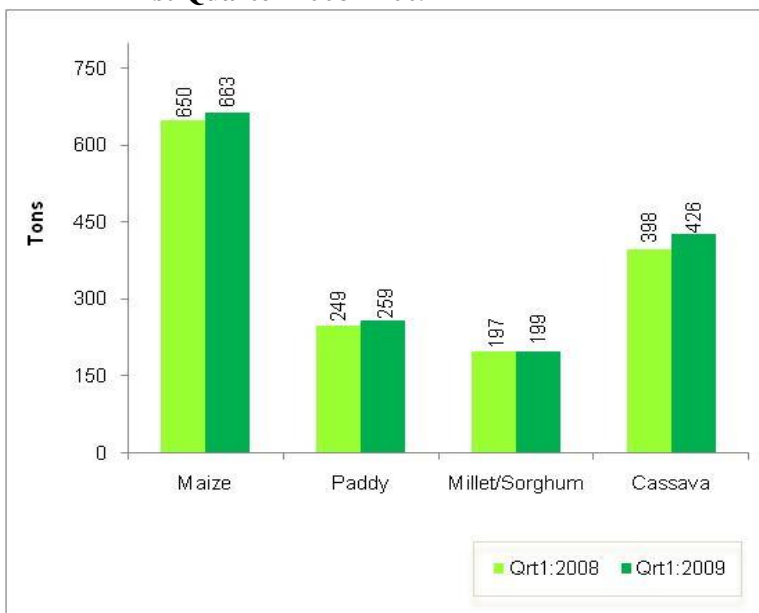
The activity registered a growth rate of 0.3 percent in the first quarter of 2009 compared to 7.0 percent in the first quarter of 2008.

There was a slight increase in production/harvest of major crops; maize production went up by 2 percent from 650

tonnes in the first quarter of 2008 to record 663 tonnes in 2009.

Paddy harvested rose by 4 percent from 249 tonnes in the first quarter of 2008 to 259 tonnes in the first quarter of 2009. Millet/sorghum harvested rose by 1 per cent from 197 tonnes to 199 tonnes while, cassava harvested increased by 7 per cent from 398 tonnes in the first quarter of 2008 to 426 tonnes in the first quarter of 2009.

**Figure 2: Production / harvest of selected major Crops for the first Quarter 2008 - 2009**



---

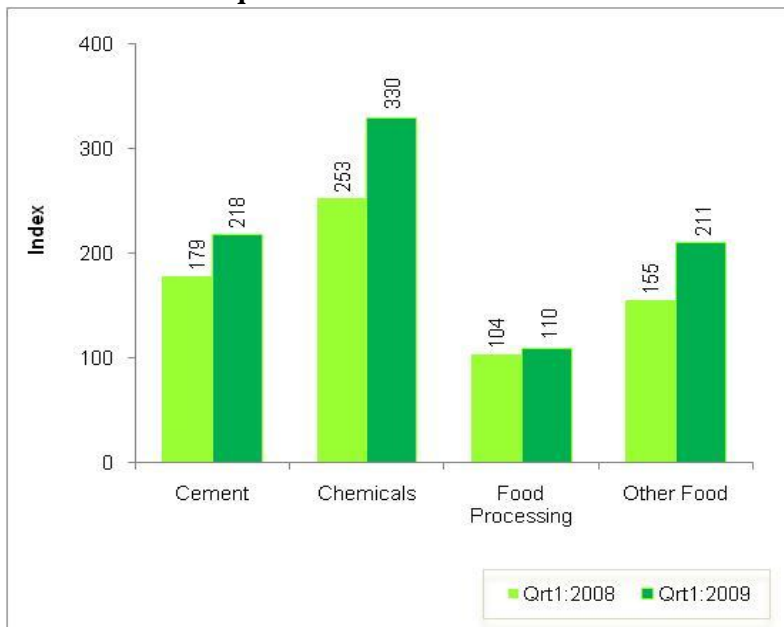
### **3.0 Fishing**

Fishing recorded a growth rate of 7.9 percent in the first quarter of 2009 compared to -19.4 percent in the first quarter of 2008. The high growth was attributed to more demand for fish and fish products in foreign markets.

### **4.0 Manufacturing**

The activity recorded a growth rate of 8.8 percent in the first quarter of 2009 compared to 7.4 percent in 2008. This was caused by increase in the volume of industrial production in the reference period. Significant increases were recorded in food and other types of food processing, manufacture of tobacco, cement and chemicals industries. Volume indices for cement increased from 179 in 2008 to 218 in 2009, chemicals from 253 in 2008 to 330 in 2009, food processing from 104 in 2008 to 110 and other food types from 155 in 2008 to 211 in 2009 for the two compared quarters.

**Figure 3: Index of Industrial Production for selected items for the first quarter 2008 – 2009**

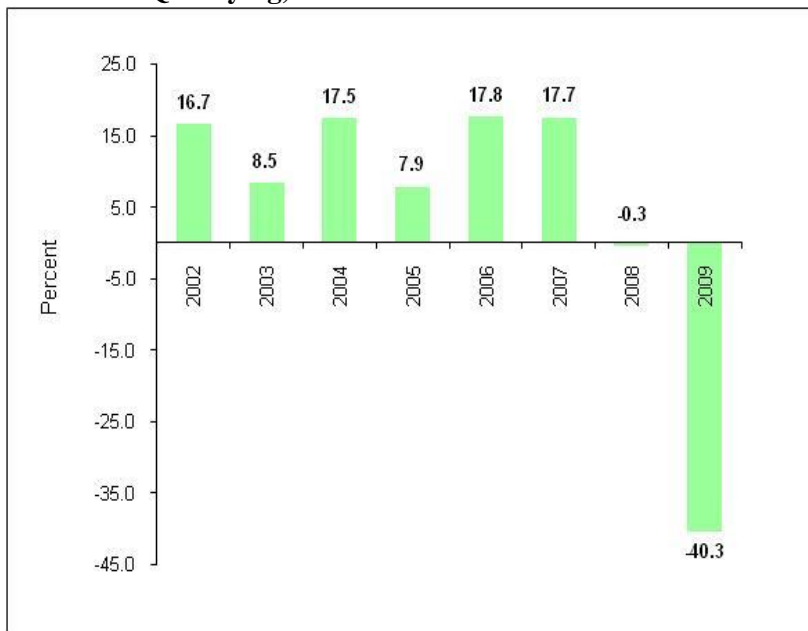


## 5.0 Mining and Quarrying

The activity recorded a decline in growth rate of -40.3 percent in the first quarter of 2009 compared to -0.3 percent the first quarter of 2008. This was caused by the decrease in production of gold, and diamond in the quarter under review. The decrease was due to the collapse of Geita gold mine underground infrastructure and fall of world diamond prices which had negative effect in diamond production.



**Figure 4: First quarter GVA Growth rate for Mining and Quarrying, 2002-2009**



## 6.0 Electricity

The growth rate of electricity was 6.9 percent in the first quarter of 2009 compared to 2.9 percent in 2008. The performance was a result of enough and sustained water levels in the hydro electric dams including Mtera dam for power generation during the period.

## 7.0 Construction

Construction activity grew at a rate of 9.9 percent in the first quarter of 2009 compared to 7.4 percent in the first quarter of 2008; the growth was attributed to an increase in the construction of residential and non-residential buildings,

---

---

roads and bridges; and land improvement activities. The growth was due to increased in consumption of cement from 491,753 tons in 2009 compared to 402,660 tons in 2008.

## **8.0 Hotels and Restaurants**

Hotels and restaurants recorded a growth rate of 4.3 percent in the first quarter of 2009 compared to 4.6 percent in the first quarter of 2008. This growth rate is attributed to slight increase in the number of international and resident visitors in hotels. The overall bed occupancy index increased from 159 in the first quarter of 2008 to 166 in the first quarter of 2009, during this period the number of domestic hotel visitors increased from 141,237 in 2008 to 153,591 in 2009.

## **9.0 Transport and Communication**

The activity recorded a growth rate of 13.4 percent in the first quarter of 2009 compared to 16.5 percent in the first quarter of 2008. The growth rate was attained in response to the increase in cargo transported from 1,593 thousand tons in 2008 to 1,760 thousand tons in 2009.

## **10.0 Financial Intermediation**

The activity recorded a growth rate of 7.9 percent in the first quarter of 2009 compared to 18.8 percent in the first quarter of 2008; the low performance was attributed to the decrease in levels of deposits and lending by commercial banks. The deposits in commercial banks during the first quarter in

---

---

2009 amounted to 4,175,026 millions as compared to 6,101,261 million of the same period in 2008.

### **11.0 Public Administration**

The activity recorded a slow growth rate of 4.3 percent in 2009 compared to 7.2 percent in the first quarter of 2008. The decrease was attributed to low rate of recruitment of new employees by the government.

### **12.0 Education**

The activity recorded a growth rate of 11.5 percent in the first quarter of 2009 compared to 1.7 percent in the first quarter of 2008. The low performance was attributed to the growth rate of enrolment in 2009 as compared to 2008. The enrolment in 2009 was 11,735,584 students as compared to 11,402,347 students in 2008.

### **13.0 Health, Other Social, Community and Personal Services**

The activity recorded a growth rate of 5.8 percent in the first quarter of 2009 compared to 7.3 percent in the first quarter of 2008; the performance was attributed to the increase in number of patients attended in health facilities. Moreover, there was an increase in different personal and community services provided during the reference quarter.

## Annexes

**Annex 1:Gross Value Added by Activity Constant 2001 Prices in Million Tshs**

Year	Quarter	Agriculture	Fishing	Mining and quarrying	Manufacturing	Electricity	Construction	Wholesale and retail trade	Hotels and restaurants	Transport and communication
2001		2,636,193	153,660	159,979	762,399	267,793	475,380	1,182,797	250,978	599,840
2002		2,766,479	164,050	187,000	819,200	285,792	531,740	1,281,544	267,162	640,550
2003		2,850,956	172,893	219,000	893,000	310,346	605,000	1,405,698	275,836	685,940
2004		3,017,988	185,543	254,000	977,000	307,904	683,354	1,486,931	285,732	757,730
2005		3,148,384	196,676	295,000	1,071,001	338,207	752,343	1,585,906	301,873	828,850
2006		3,268,238	206,509	341,000	1,161,999	356,883	823,650	1,736,631	314,921	900,540
2007		3,399,648	215,734	378,001	1,263,401	344,981	903,544	1,907,594	328,859	991,650
2008		3,554,488	226,521	386,998	1,388,500	364,311	998,416	2,102,421	343,642	1,099,200
2001	1	492,577	34,292	43,510	176,744	69,704	112,001	294,617	66,427	159,985
	2	759,242	43,439	42,625	189,662	67,340	128,979	285,452	55,726	153,255
	3	992,830	40,010	39,196	197,809	64,700	112,528	303,004	69,971	143,564
	4	391,500	35,919	34,668	198,184	66,048	121,892	299,727	58,876	143,037

**Annex 1: Gross Value Added by Activity Constant 2001 Prices in Million Tshs**

Year	Quarter	Agriculture	Fishing	Mining and quarrying	Manufacturing	Electricity	Construction	Wholesale and retail trade	Hotels and restaurants	Transport and communication
2002	1	497,530	38,802	50,781	182,971	67,537	124,295	300,012	70,060	168,540
	2	789,337	48,780	48,904	188,496	70,520	141,372	305,643	61,761	161,024
	3	1,087,024	41,158	45,479	221,705	71,243	133,980	322,133	73,863	151,397
	4	392,554	35,310	41,836	226,028	76,492	132,052	353,712	61,515	159,589
2003	1	509,998	39,886	55,078	208,014	75,402	134,391	308,830	73,466	182,065
	2	807,096	47,395	56,773	206,134	74,596	170,565	314,797	63,380	178,281
	3	1,131,921	45,415	55,284	233,452	76,320	152,969	358,769	74,969	164,396
	4	401,980	40,196	51,864	245,400	84,027	147,075	423,304	63,985	161,197
2004	1	533,361	42,572	64,721	223,592	75,963	175,049	334,021	72,854	190,946
	2	877,827	47,710	66,825	222,017	76,770	177,360	324,210	65,852	183,893
	3	1,194,163	48,326	63,970	266,490	77,821	159,179	366,903	78,217	181,570
	4	412,612	46,935	58,484	264,901	77,349	171,812	461,766	68,778	201,320
2005	1	551,391	49,949	69,865	243,871	83,032	166,887	349,338	75,347	204,297
	2	909,049	54,038	68,971	249,890	86,326	186,363	353,962	69,272	212,478
	3	1,263,250	44,874	71,724	282,432	83,234	206,482	392,649	80,370	207,299
	4	424,664	47,815	84,439	294,808	85,615	192,569	489,951	76,910	204,776

**Annex 1: Gross Value Added by Activity Constant 2001 Prices in Million Tshs**

Year	Quarter	Agriculture	Fishing	Mining and quarrying	Manufacturing	Electricity	Construction	Wholesale and retail trade	Hotels and restaurants	Transport and communication
2006	1	569,748	50,186	82,282	276,935	85,534	209,269	357,293	75,539	250,520
	2	969,951	57,473	82,596	277,045	84,719	206,063	428,698	71,552	225,500
	3	1,313,380	53,826	88,763	302,631	88,416	204,605	430,585	84,167	208,582
	4	415,188	45,025	87,359	305,388	98,214	203,762	520,024	83,643	215,938
2007	1	588,717	57,198	96,815	289,781	84,549	221,596	415,261	78,485	214,017
	2	1,004,191	53,397	89,725	304,332	88,122	203,147	450,047	74,557	242,132
	3	1,383,289	51,535	93,612	330,282	85,031	217,328	463,787	89,461	262,483
	4	423,498	53,604	97,849	339,006	87,279	261,429	578,505	86,397	273,018
2008	1	629,635	46,104	96,563	311,141	87,042	238,058	455,294	82,097	249,369
	2	1,055,788	60,497	104,672	320,006	86,275	198,529	502,935	77,289	273,463
	3	1,450,891	66,986	97,411	364,053	90,345	291,106	520,221	92,599	294,249
	4	418,156	52,935	88,354	393,300	100,648	270,708	623,951	91,615	282,119
2009	1	631,518	49,746	57,639	338,617	93,053	261,644	497,710	85,621	282,841

**Annex 1 (Ctd):Gross Value Added by Activity Constant 2001 Prices in Million Tshs**

Year	Quarter	Financial inter-mediation	Real estate	Public administration	Education	Other services	FISIM	All indust. at basic prices	Taxes on products	GDP at market prices	GDP, seasonally adjusted
2001		140,000	936,440	640,649	188,733	200,520	80,000	8,515,362	612,000	9,127,362	
2002		154,108	1,003,260	699,561	202,222	212,515	87,000	9,128,183	655,926	9,784,109	
2003		170,643	1,068,732	766,760	207,606	225,372	97,154	9,760,628	701,372	10,462,000	
2004		184,775	1,141,014	871,169	215,910	238,691	106,931	10,500,811	756,4022	11,257,233	
2005		204,694	1,226,790	970,786	224,547	253,337	119,497	11,278,896	812,482	12,091,378	
2006		228,000	1,316,000	1,033,488	235,774	270,581	137,287	12,056,928	867,867	12,924,795	
2007		251,280	1,408,120	1,102,951	248,742	289,140	158,292	12,875,386	927,751	13,803,137	
2008		281,120	1,508,097	1,180,158	265,905	309,499	175,704	13,833,585	999,664	14,833,249	
2001	1	35,871	239,598	157,062	47,730	48,028	21,431	1,956,715	145,447	2,102,162	2,247,907
	2	35,070	224,264	158,108	47,339	49,765	20,979	2,219,288	139,056	2,358,344	2,284,530
	3	36,613	229,834	160,614	47,431	51,001	21,731	2,467,374	165,100	2,632,474	2,280,947
	4	32,445	242,704	164,816	46,233	51,726	15,589	1,871,916	162,398	2,034,314	2,283,691
2002	1	45,762	248,935	169,247	52,024	52,184	26,582	2,041,828	146,444	2,188,272	2,371,836
	2	38,951	239,997	172,727	50,543	52,732	21,994	2,348,793	149,431	2,498,224	2,431,092
	3	38,042	248,580	176,671	50,185	53,411	21,074	2,693,796	176,821	2,870,617	2,456,074
	4	31,353	265,789	180,955	49,471	54,188	17,081	2,043,4763	183,205	2,226,968	2,491,443

<b>Annex 1 (Ctd):Gross Value Added by Activity Constant 2001 Prices in Million Tshs</b>											
<b>Year</b>	<b>Quarter</b>	<b>Financial inter-mediation</b>	<b>Real estate</b>	<b>Public adm-nistration</b>	<b>Education</b>	<b>Other services</b>	<b>FISIM</b>	<b>All indust. at basic prices</b>	<b>Taxes on products</b>	<b>GDP at market prices</b>	<b>GDP, seasonally adjusted</b>
2003	1	38,560	262,613	184,607	52,694	55,052	21,365	2,159,292	163,231	2,322,523	2,505,779
	2	43,497	256,301	188,534	52,021	56,135	24,155	2,491,349	157,783	2,649,132	2,602,000
	3	46,314	266,577	193,621	52,135	56,870	26,245	2,882,768	184,535	3,067,303	2,611,187
	4	42,272	283,209	200,039	50,756	57,316	25,389	2,227,231	195,851	2,423,082	2,708,481
2004	1	44,335	279,463	207,119	55,301	58,084	25,446	2,331,936	170,532	2,502,468	2,759,797
	2	45,559	258,826	214,170	53,575	59,152	25,663	2,648,084	164,160	2,812,244	2,753,934
	3	48,447	282,556	221,352	54,194	60,207	27,817	3,075,579	212,221	3,287,800	2,838,856
	4	46,434	320,155	228,559	52,840	61,247	28,003	2,445,189	209,487	2,654,676	2,900,410
2005	1	45,788	301,288	234,959	57,167	62,041	26,874	2,468,346	180,080	2,648,426	2,809,655
	2	53,074	278,796	239,800	55,776	62,765	31,315	2,849,246	185,160	3,034,406	2,945,661
	3	49,793	324,014	245,193	56,558	63,699	29,603	3,341,968	218,621	3,560,589	3,162,991
	4	56,039	322,702	250,849	55,046	64,832	31,705	2,619,309	228,639	2,847,948	3,138,085
2006	1	55,605	347,271	253,668	60,940	65,979	33,236	2,707,533	199,611	2,907,144	3,528,468
	2	53,394	288,378	255,896	58,888	67,149	32,293	3,095,009	202,633	3,297,642	3,033,429
	3	59,622	350,682	259,508	59,548	68,226	34,968	3,537,573	229,444	3,767,017	3,137,878
	4	59,378	329,670	264,428	56,398	69,227	36,789	2,716,852	236,213	2,953,065	3,240,621



<b>Annex 1 (Ctd):Gross Value Added by Activity Constant 2001 Prices in Million Tshs</b>											
<b>Year</b>	<b>Quarter</b>	<b>Financial inter-mediation</b>	<b>Real estate</b>	<b>Public administration</b>	<b>Education</b>	<b>Other services</b>	<b>FISIM</b>	<b>All indust. at basic prices</b>	<b>Taxes on products</b>	<b>GDP at market prices</b>	<b>GDP, seasonally adjusted</b>
2007	1	42,716	360,352	269,339	65,280	70,481	24,830	2,829,757	199,046	3,028,803	3,360,376
	2	59,347	332,738	273,196	61,853	71,875	37,440	3,271,219	212,824	3,484,043	3,482,372
	3	70,887	360,174	277,708	61,422	72,934	45,248	3,774,685	252,730	4,027,415	3,468,744
	4	78,330	354,836	282,757	60,187	73,850	50,774	2,999,771	263,200	3,262,971	3,499,095
2008	1	50,735	383,619	288,604	66,395	75,622	31,150	3,029,127	216,195	3,245,322	3,705,400
	2	67,102	357,327	294,767	66,341	76,813	41,802	3,500,002	237,308	3,737,310	3,688,240
	3	79,120	388,255	298,052	66,592	77,972	49,706	4,128,146	267,222	4,395,368	3,754,935
	4	84,162	378,900	298,777	66,577	79,093	53,047	3,176,249	278,976	3,455,225	3,675,379
2009	1	54,750	418,641	300,999	74,021	79,991	33,563	3,193,228	241,622	3,428,439	3,693,323

**Annex 2: Gross Value Added by Activity Constant 2001 prices – Percentage Changes**

Year	Quarter	Agriculture	Fishing	Mining and quarrying	Manufacturing	Electricity	Construction	Wholesale and retail trade	Hotels and restaurants	Transport and communication
2001										
2002		4.9	6.8	16.9	7.5	6.7	11.9	8.3	6.4	6.8
2003		3.1	5.4	17.1	9.0	8.6	13.8	9.7	3.2	7.1
2004		5.9	7.3	16.0	9.4	-0.8	13.0	5.8	3.6	10.5
2005		4.3	6.0	16.1	9.6	9.8	10.1	6.7	5.6	9.4
2006		3.8	5.0	15.6	8.5	5.5	9.5	9.5	4.3	8.6
2007		4.0	4.5	10.9	8.7	-3.3	9.7	9.8	4.4	10.1
2008		4.6	5.0	2.4	9.9	5.6	10.5	10.2	4.5	10.8
2002	1	1.0	13.2	16.7	3.5	-3.1	11.0	1.8	5.5	5.3
	2	4.0	12.3	14.7	-0.6	4.7	9.6	7.1	10.8	5.1
	3	9.5	2.9	16.0	12.1	10.1	19.1	6.3	5.6	5.5
	4	0.3	-1.7	20.7	14.0	15.8	8.3	18.0	4.5	11.6
	Annual	4.9	6.8	16.9	7.5	5.6	11.9	8.3	6.5	6.8

**Annex 2: Gross Value Added by Activity Constant 2001 prices – Percentage Changes**

Year	Quarter	Agriculture	Fishing	Mining and quarrying	Manufacturing	Electricity	Construction	Wholesale and retail trade	Hotels and restaurants	Transport and communication
2003	1	2.5	2.8	8.5	13.7	11.6	8.1	2.9	4.9	8.0
	2	2.2	-2.8	16.1	9.4	5.8	20.6	3.0	2.6	10.7
	3	4.1	10.3	21.6	5.3	7.1	14.2	11.4	1.5	8.6
	4	2.4	13.8	24.0	8.6	9.9	11.4	19.7	4.0	1.0
	Annual	3.1	5.4	17.1	9.0	8.6	13.8	9.7	3.2	7.1
2004	1	4.6	6.7	17.5	7.5	0.7	30.3	8.2	-0.8	4.9
	2	8.8	0.7	17.7	7.7	2.9	4.0	3.0	3.9	3.1
	3	5.5	6.4	15.7	14.2	2.0	4.1	2.3	4.3	10.4
	4	2.6	16.8	12.8	7.9	-7.9	16.8	9.1	7.5	24.9
	Annual	5.9	7.3	16.0	9.4	-0.8	13.0	5.8	3.6	10.5
2005	1	3.4	17.3	7.9	9.1	9.3	-4.7	4.6	3.4	7.0
	2	3.6	13.3	3.2	12.6	12.4	5.1	9.2	5.2	15.5
	3	5.8	-7.1	12.1	6.0	7.0	29.7	7.0	2.8	14.2
	4	2.9	1.9	44.4	11.3	10.7	12.1	6.1	11.9	1.7
	Annual	4.3	6.0	16.1	9.6	9.8	10.1	6.7	5.7	9.4

**Annex 2: Gross Value Added by Activity Constant 2001 prices – Percentage Changes**

Year	Quarter	Agriculture	Fishing	Mining and quarrying	Manufacturing	Electricity	Construction	Wholesale and retail trade	Hotels and restaurants	Transport and communication
2006	1	3.3	0.5	17.8	13.6	3.0	25.4	2.3	0.3	22.6
	2	6.7	6.4	19.8	10.9	-1.9	10.6	21.1	3.3	6.1
	3	4.0	19.9	23.8	7.2	6.2	-0.9	9.7	4.7	0.6
	4	-2.2	-5.8	3.5	3.6	14.7	5.8	6.1	8.8	5.5
	Annual	3.8	5.0	15.6	8.5	5.5	9.5	9.5	4.3	8.6
2007	1	3.3	14.0	17.7	4.6	-1.2	5.9	16.2	3.9	-14.6
	2	3.5	-7.1	8.6	9.8	4.0	-1.4	5.0	4.2	7.4
	3	5.3	-4.3	5.5	9.1	-3.8	6.2	7.7	6.3	25.8
	4	2.0	19.1	12.0	11.0	-11.1	28.3	11.2	3.3	26.4
	Annual	4.0	4.5	10.9	8.7	-3.3	9.7	9.8	4.4	10.1
2008	1	7.0	-19.4	-0.3	7.4	2.9	7.4	9.6	4.6	16.5
	2	5.1	13.3	16.7	5.2	-2.1	-2.3	11.8	3.7	12.9
	3	4.9	30.0	4.1	10.2	6.2	33.9	12.2	3.5	12.1
	4	-1.3	-1.2	-9.7	16.0	15.3	3.5	7.9	6.0	3.3
	Annual	4.6	5.0	2.4	9.9	5.6	10.5	10.2	4.5	10.8
2009	1	0.3	7.9	-40.3	8.8	4.8	9.9	9.3	4.4	13.4

**Annex 2 (Ctd):Gross Value Added by activity Constant 2001 prices – Percentage Changes**

Year	Quarter	Financial inter-mediation	Real estate and business services	Public adm-inistration	Education	Other services	FISIM	All indust. at basic prices	Taxes on products	GDP at market prices	GDP, seasonally adjusted
2001											
2002		10.1	7.1	9.2	7.1	6.0	8.7	7.2	7.2	7.2	
2003		10.7	6.5	9.6	2.7	6.0	11.7	6.9	6.9	6.9	
2004		8.3	6.8	13.6	4.0	5.9	10.1	7.6	7.8	7.6	
2005		10.8	7.5	11.4	4.0	6.1	11.8	7.4	7.4	7.4	
2006		11.4	7.3	6.5	5.0	6.8	14.9	6.9	6.8	6.9	
2007		10.2	7.0	6.7	5.5	6.9	15.3	6.8	6.9	6.8	
2008		11.9	7.1	7.0	6.9	7.0	11.0	7.4	7.8	7.5	
2002	1	27.6	3.9	7.8	9.0	8.7	25.3	4.3	0.7	4.1	3.9
	2	11.1	7.0	9.2	6.8	6.0	4.8	5.8	7.5	5.9	2.5
	3	3.9	8.2	10.0	5.8	4.7	-3.0	9.2	7.1	9.0	1.0
	4	-3.4	9.5	9.8	7.0	4.8	7.7	9.2	12.8	9.5	1.4
	Annual	10.1	7.1	9.2	7.1	6.0	8.7	7.2	7.2	7.1	

**Annex 2 (Ctd):Gross Value Added by activity Constant 2001 prices – Percentage Changes**

Year	Quarter	Financial inter-mediation	Real estate and business services	Public administration	Education	Other services	FISIM	All indust. at basic prices	Taxes on products	GDP at market prices	GDP, seasonally adjusted
2003	1	-15.7	5.5	9.1	1.3	5.5	-20.4	5.8	11.5	6.1	0.6
	2	11.7	6.8	9.2	2.9	6.5	9.8	6.1	5.6	6.0	3.8
	3	21.7	7.2	9.6	3.9	6.5	24.5	7.0	4.4	6.9	0.4
	4	34.8	6.6	10.5	2.6	5.8	48.6	9.0	6.9	8.8	3.7
	Annual	10.7	6.5	9.6	2.7	6.0	11.7	6.9	6.9	6.9	
2004	1	15.0	6.4	12.2	4.9	5.5	19.1	8.0	4.5	7.7	1.9
	2	4.7	1.0	13.6	3.0	5.4	6.2	6.3	4.0	6.2	-0.2
	3	4.6	6.0	14.3	3.9	5.9	6.0	6.7	15.0	7.2	3.1
	4	9.8	13.0	14.3	4.1	6.9	10.3	9.8	7.0	9.6	2.2
	Annual	8.3	6.8	13.6	4.0	5.9	10.1	7.6	7.8	7.6	
2005	1	3.3	7.8	13.4	3.4	6.8	5.6	5.8	5.6	5.8	-3.1
	2	16.5	7.7	12.0	4.1	6.1	22.0	7.6	12.8	7.9	4.8
	3	2.8	14.7	10.8	4.4	5.8	6.4	8.7	3.0	8.3	7.4
	4	20.7	0.8	9.8	4.2	5.9	13.2	7.1	9.1	7.3	-0.8
	Annual	10.8	7.5	11.4	4.0	6.1	11.8	7.4	7.4	7.4	

**Annex 2 (Ctd):Gross Value Added by activity Constant 2001 prices – Percentage Changes**

Year	Quarter	Financial inter-mediation	Real estate and business services	Public administration	Education	Other services	FISIM	All indust. at basic prices	Taxes on products	GDP at market prices	GDP, seasonally adjusted
2006	1	21.4	15.3	8.0	6.6	6.3	23.7	9.7	10.8	9.8	12.4
	2	0.6	3.4	6.7	5.6	7.0	3.1	8.6	9.4	8.7	-14.0
	3	19.7	8.2	5.8	5.3	7.1	18.1	5.9	5.0	5.8	3.4
	4	6.0	2.2	5.4	2.5	6.8	16.0	3.7	3.3	3.7	3.3
	Annual	11.4	7.3	6.5	5.0	6.8	14.9	6.9	6.8	6.9	
2007	1	-23.2	3.8	6.2	7.1	6.8	-25.3	4.5	-0.3	4.2	3.7
	2	11.1	15.4	6.8	5.0	7.0	15.9	5.7	5.0	5.7	3.6
	3	18.9	2.7	7.0	3.1	6.9	29.4	6.7	10.1	6.9	-0.4
	4	31.9	7.6	6.9	6.7	6.7	38.0	10.4	11.4	10.5	0.9
	Annual	10.2	7.0	6.7	5.5	6.9	15.3	6.8	6.9	6.8	
2008	1	18.8	6.5	7.2	1.7	7.3	25.5	7.0	8.6	7.1	5.9
	2	13.1	7.4	7.9	7.3	6.9	11.7	7.0	11.5	7.3	-0.5
	3	11.6	7.8	7.3	8.4	6.9	9.9	9.4	5.7	9.1	1.8
	4	7.4	6.8	5.7	10.6	7.1	4.5	5.9	6.0	5.9	-2.1
	Annual	11.9	7.1	7.0	6.9	7.0	11.0	7.4	7.8	7.5	
2009	1	7.9	9.1	4.3	11.5	5.8	7.7	5.4	8.8	5.6	0.5

# National Bureau of Statistics

## **Vision**

To be the authoritative source of statistical information pertaining to socio-economic conditions in the country, an institution able to provide such information most effectively, a point of reference for statistical methodologies and standards.

## **Mission**

To facilitate planning and decision making within the government and the business community, to stimulate research and inform public debate through the provision of relevant, reliable and timely statistics and a quality statistical service in general.