



THE UNITED REPUBLIC OF TANZANIA

**QUARTERLY GROSS DOMESTIC PRODUCT OF  
TANZANIA MAINLAND  
FIRST QUARTER, 2010**



National Bureau of Statistics  
Ministry of Finance and Economic Affairs  
Dar es Salaam  
**June, 2010**

---

---

## Table of Contents

	<b>Page</b>
1.0 Introduction .....	1
1.1 Economic Performance .....	1
2.0 Agriculture .....	3
3.0 Fishing.....	4
4.0 Mining and Quarrying.....	4
5.0 Manufacturing .....	5
6.0 Electricity .....	6
7.0 Construction .....	7
8.0 Wholesale and Retail Trad; Repair of Motor Vehicles, Motorcycles, Personal and Household Goods ..	7
9.0 Hotels and Restaurants.....	7
10.0 Transport and Communication.....	8
11.0 Financial Intermediation .....	8
12.0 Real Estates and Business Services .....	8
13.0 Public Administration .....	8
14.0 Education.....	9
15.0 Health; Other Social, Community and Personal Services .....	9



---

---

## List of Figures

Figure 1: Growth Rates for the First Quarter, 2002-2010..... 2

Figure 2: Production / Harvested Quantity of Selected  
Major Crops for the first Quarter 2009 - 2010..... 4

Figure 3: GVA Growth Rate for Mining and Quarrying,  
First Quarter 2002-2010..... 5

Figure 4: Production Index of Selected Commodities for the First  
Quarter 2009– 2010..... 6

## List of Annexes

Annex 1: Gross Value Added by Activity Constant  
2001 Prices in Million Tshs ..... **Error! Bookmark not  
defined.**

Annex 2: Gross Value Added by Activity Constant  
2001 prices – Percentage Changes.. **Error! Bookmark  
not defined.**



---

---

# QUARTERLY GROSS DOMESTIC PRODUCT FIRST QUARTER 2010

## 1.0 Introduction

This report presents the official Quarterly Gross Domestic Product (QGDP) estimates for Tanzania Mainland. It is the first set of results for first quarter of 2010. The compilation of QGDP follows the need of having appropriate policy interventions which can be achieved through reliable and frequent reports on recent economic developments. The current quarterly GDP is subject for the revision on the availability of the revised data from the field.

## 1.1 Economic Performance

In the report, the real growth rates are measured as the rate of change on QGDP for current year as compared to the QGDP for the previous year. For example, the real growth rate for the first QGDP for the year 2001 is compared to the first QGDP for the year 2000. However, in measuring the rate of growth due to seasonality effects, the change has been measured between the adjacent quarters in the same year.

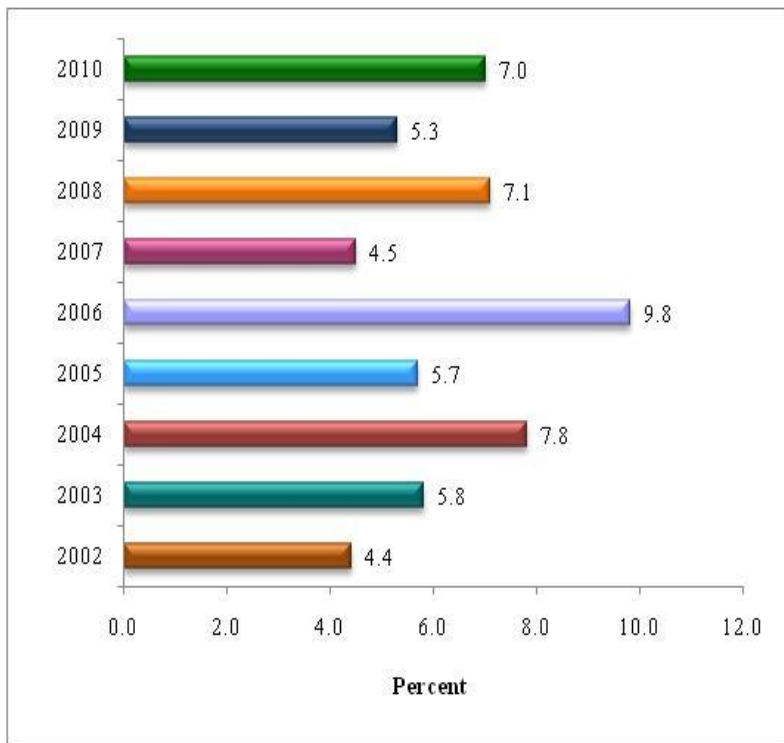
The Real Gross Domestic Product at market prices is estimated to have increased to a rate of 7.0 percent in the first quarter of 2010 compared to a rate of 5.3 percent in the first quarter of 2009.

---

---

In absolute terms, the QGDP for the quarter was 3,653,403 Million shillings in 2010 compared to shillings 3,413,748 Million shillings in 2009, (Annex 1)

**Figure 1: Growth Rates for the First Quarter, 2002-2010**



---

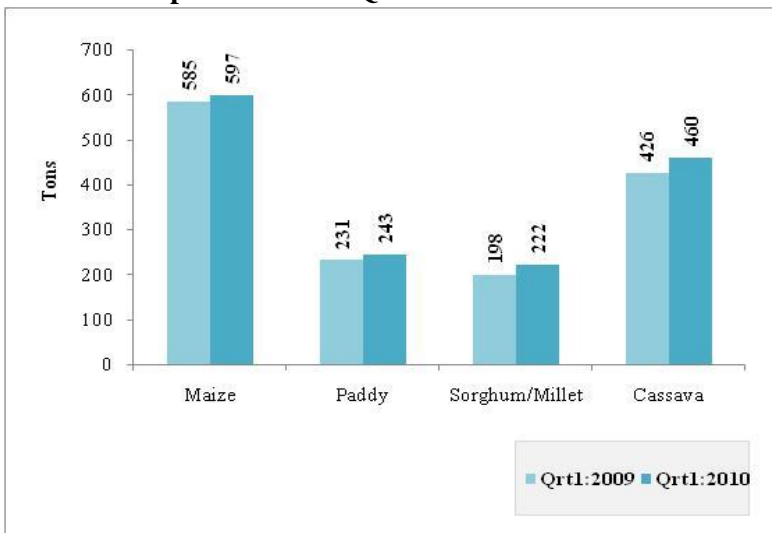
---

## 2.0 Agriculture

The activity registered a growth rate of 1.5 percent in the first quarter of 2010 compared to 0.3 percent in the first quarter of 2009.

There was increase in harvest of major food crops. For instance maize went up by 1.6 percent from 585 tonnes in the first quarter of 2009 to record 597 tonnes in the first quarter of 2010, Paddy harvested rose from 231 tonnes in the first quarter of 2009 to 243 tonnes in the first quarter of 2010. Millet/Sorghum harvested rose by 12% from 198 tonnes to 222 while Cassava harvested increased by 8 percent from 426 tonnes in the first quarter of 2009 to 460 tonnes in the first quarter of 2010.

**Figure 2: Production / Harvested Quantity of Selected Major Crops for the first Quarter 2009 - 2010**



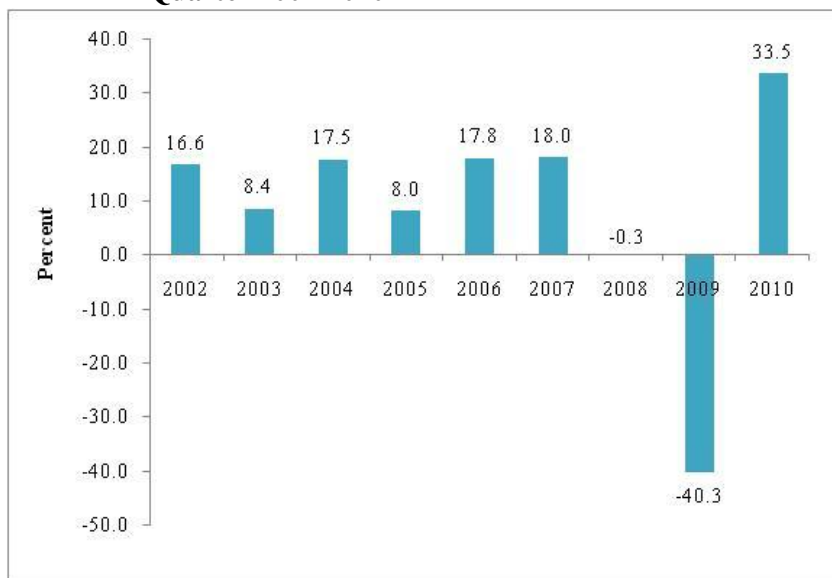
### 3.0 Fishing

Fishing recorded a growth of 13.8 percent in the first quarter of 2010 compared to 11.7 percent in the first quarter of 2009. The increase was mainly attributed to increased demand for fish and fish products both at local and foreign markets.

### 4.0 Mining and Quarrying

The activity recorded an increase in growth rate of 33.5 percent in the first quarter of 2010 compared to -29.2 percent the first quarter of 2009. This was caused by the increase in production of gold and diamond in the quarter under review.

**Figure 3: GVA Growth Rate for Mining and Quarrying, First Quarter 2002-2010**

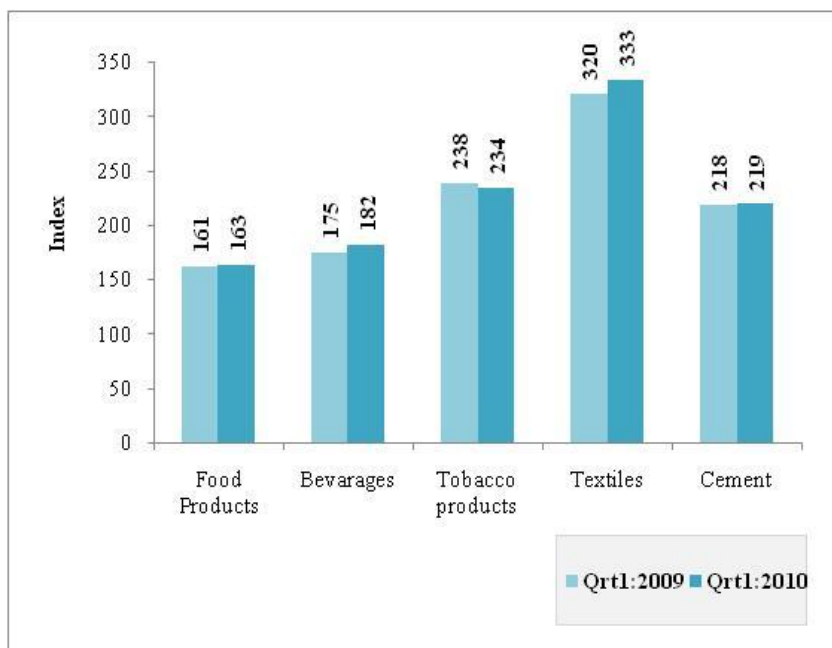


## 5.0 Manufacturing

The activity recorded a growth rate of 5.0 percent in the first quarter of 2010 compared to 8.4 percent in 2009. This decrease of growth was attributed to low increase of manufacturing index of cement, beverages and other food products. The index of manufacturing in chemicals decreased from 166 in the first quarter of 2009 to 162 in 2010, tobacco decreased from 238 to 234 in the reference period. Manufacturing index of processed food increased by 8 percent from 130 in the first quarter of 2009 to reach 140 in the same quarter of 2010.



**Figure 4: Production Index of Selected Commodities for the First Quarter 2009– 2010**



## 6.0 Electricity

The growth rate of electricity was 5.5 percent in the first quarter of 2010 compared to 7.0 percent in the same quarter of 2009. The decline in the rate of growth is attributed to the less hydro and gas power generated in the reference period.

---

---

## 7.0 Construction

Construction activity grew at a rate of 5.2 percent in the first quarter of 2010 compared to 7.4 percent in the first quarter of 2009; the growth was attributed to an increase in the construction of residential and non-residential buildings, roads and bridges; and land improvement activities.

## 8.0 Wholesale and Retail Trade; Repair of Motor Vehicles, Motorcycles, Personal and Household Goods

This activity recorded a growth of 12.8 percent in the first quarter of 2010 compare to 11.5 percent in the same quarter of 2009. The index of deflated output for this activity as derived from trade turnovers increased to 208.5 in the first quarter of 2010 compared to 175.1 in the same quarter of 2009. The increase was attributed to the increase of domestic manufactured goods and imports of merchandized goods.

## 9.0 Hotels and Restaurants

Hotels and restaurants recorded a slight increase in growth rate of 1.4 percent in the first quarter of 2010 compared to 3.0 percent in the first quarter of 2009. This growth rate is attributed to slight increase in the number of international and resident visitors in hotels. The overall bed occupancy index slightly increased from 156 in the first quarter of 2009 to 159 in the first quarter of 2010.

---

---

## 10.0 Transport and Communication

The activity recorded a growth rate of 10.9 percent in the first quarter of 2010 compared to 10.1 percent in the first quarter of 2009. The growth rate was attained in response to the increase in the volume of goods handled and passenger carried in the quarter under review.

## 11.0 Financial Intermediation

The activity recorded a growth rate of 7.7 percent in the first quarter of 2010 compared to 9.5 percent in the first quarter of 2009; the low performance was attributed to the decrease in levels of deposits and lending by commercial banks.

## 12.0 Real Estates and Business Services

The activity grew at a rate of 7.1 percent in the first quarter of 2010 compared to a rate of 5.6 percent in the same quarter in 2009. This was attributed to the increase in the overall weighted index of Business services, rented dwellings and owner occupied dwellings. The business services index increased by 11.1 percent from 332 in 2009 to 368 in the first quarter of 2010.

## 13.0 Public Administration

The activity recorded an increase in growth rate of 5.6 percent in 2010 compared to 4.7 percent in the first quarter of 2009. This was attributed to an increase in the rate of recruitment of new employees by the government during the period under review.

---

---

## 14.0 Education

The activity recorded a growth rate of 5.9 percent in the first quarter of 2010 compared to 7.9 percent in the first quarter of 2009. This was attributed to increase of number of enrolment in 2010 as compared to 2009.

## 15.0 Health; Other Social, Community and Personal Services

The activity recorded a growth rate of 5.8 percent in the first quarter of 2010 compared to 5.9 percent realised in the first quarter of 2009. The performance was attributed to the increase in number of patients attended in health facilities.

## Annexes

**Annex 1: Gross Value Added by Activity Constant 2001 Prices in Million Tshs**

Year	Quarter	Agriculture	Fishing	Mining and quarrying	Manufacturing	Electricity	Construction	Wholesale and retail trade	Hotels and restaurants	Transport and communication
2001		2,636,193	153,660	159,979	762,400	240,700	475,380	1,182,797	250,978	599,845
2002		2,766,479	164,049	187,000	819,200	254,084	531,740	1,281,544	267,162	640,549
2003		2,850,956	173,892	219,000	893,000	271,081	605,000	1,405,698	275,836	685,940
2004		3,017,988	185,543	254,000	977,000	290,265	683,354	1,486,931	285,732	757,732
2005		3,148,384	196,676	295,000	1,071,000	314,918	752,343	1,585,906	301,873	828,851
2006		3,268,238	206,510	341,000	1,162,000	313,252	823,650	1,736,631	314,921	900,537
2007		3,399,648	215,734	377,559	1,263,435	344,981	903,544	1,906,821	328,859	991,649
2008		3,554,488	226,521	386,998	1,388,515	364,311	998,416	2,097,503	343,658	1,099,198
2009		3,669,645	232,637	391,642	1,499,596	393,168	1,073,297	2,254,816	358,779	1,220,268
2001	1	492,582	34,299	43,533	176,718	66,301	111,956	294,575	66,391	160,029
	2	759,289	43,445	42,605	189,712	55,838	128,996	285,447	55,729	153,281
	3	992,816	40,008	39,155	197,774	57,478	112,563	303,030	69,969	143,552
	4	391,505	35,908	34,686	198,197	61,083	121,865	299,744	58,890	142,983
2002	1	497,526	38,776	50,831	182,960	70,439	124,300	300,102	70,003	168,392
	2	789,353	48,750	48,945	188,501	58,639	141,403	305,717	61,792	160,922
	3	1,087,056	41,162	45,464	221,719	54,389	134,002	322,114	73,827	151,418
	4	392,544	35,361	41,761	226,020	70,617	132,035	353,611	61,539	159,817



**Annex 1:Gross Value Added by Activity Constant 2001 Prices in Million Tshs**

Year	Quarter	Agriculture	Fishing	Mining and quarrying	Manufacturing	Electricity	Construction	Wholesale and retail trade	Hotels and restaurants	Transport and communication
2003	1	509,969	40,026	54,785	207,997	70,468	134,324	308,605	73,436	182,692
	2	807,102	47,651	56,600	206,148	67,783	170,480	314,591	63,376	178,768
	3	1,131,889	45,721	55,319	233,458	65,566	153,013	358,764	75,002	164,291
	4	401,996	40,494	52,296	245,397	67,263	147,183	423,738	64,022	160,189
2004	1	533,386	42,762	64,836	223,594	68,591	175,352	336,165	72,820	190,828
	2	877,889	47,769	66,805	222,036	71,560	177,364	324,681	65,868	183,695
	3	1,194,135	48,258	63,916	266,493	72,519	159,043	366,097	78,282	181,540
	4	412,578	46,754	58,443	264,878	77,595	171,595	459,988	68,762	201,670
2005	1	551,377	49,942	69,680	243,836	76,435	166,987	347,885	75,422	204,294
	2	909,040	53,946	68,884	249,815	75,653	186,497	353,373	69,281	212,471
	3	1,263,274	44,846	71,790	282,416	77,420	206,500	392,957	80,310	207,292
	4	424,693	47,941	84,647	294,933	85,409	192,360	491,691	76,861	204,794
2006	1	569,795	50,022	82,112	276,754	77,122	209,116	357,567	75,564	250,766
	2	969,954	57,477	82,559	277,027	78,155	206,080	428,838	71,551	225,248
	3	1,313,277	53,913	88,821	302,760	79,028	204,705	430,562	84,195	208,351
	4	415,211	45,098	87,508	305,459	78,947	203,749	519,664	83,611	216,172

**Annex 1:Gross Value Added by Activity Constant 2001 Prices in Million Tshs**

Year	Quarter	Agriculture	Fishing	Mining and quarrying	Manufacturing	Electricity	Construction	Wholesale and retail trade	Hotels and restaurants	Transport and communication
2007	1	588,783	57,208	97,080	289,740	84,576	221,414	414,649	78,471	215,118
	2	1,003,971	53,370	89,870	304,303	88,094	202,965	449,434	74,577	243,303
	3	1,383,422	51,519	93,436	330,270	85,032	217,351	463,507	89,457	262,546
	4	423,472	53,637	97,173	339,121	87,279	261,814	579,231	86,354	270,683
2008	1	630,146	45,023	95,258	309,896	86,828	239,091	456,965	81,970	244,005
	2	1,057,538	60,739	103,636	320,439	86,221	199,343	504,228	77,236	265,125
	3	1,449,469	67,388	97,653	364,038	90,359	291,252	519,028	92,600	283,806
	4	417,336	53,371	90,452	394,142	100,903	268,731	617,282	91,852	306,262
2009	1	632,036	50,278	67,433	335,852	92,898	256,689	509,399	84,432	268,702
	2	1,066,451	65,487	84,947	346,929	95,413	198,186	527,828	80,211	301,321
	3	1,542,089	65,399	126,629	390,549	100,497	275,462	559,698	97,100	299,861
	4	429,069	51,473	112,633	426,266	104,360	342,961	657,891	97,036	350,384
2010	1	641,516	57,192	90,039	352,802	98,047	269,935	574,602	85,618	298,064

**Annex 1 (Ctd):Gross Value Added by Activity Constant 2001 Prices in Million Tshs**

Year	Quarter	Financial inter-mediation	Real estate	Public administration	Education	Other services	FISIM	All indust. at basic prices	Taxes on products	GDP at market prices	GDP, seasonally adjusted
2001		140,000	936,440	640,649	188,733	200,520	-80,000	8,488,274	612,000	9,100,274	
2002		154,108	1,003,260	699,561	202,000	212,515	-87,000	9,096,251	655,926	9,752,177	
2003		170,643	1,068,732	766,760	207,606	225,372	-97,154	9,722,362	701,372	10,423,734	
2004		184,775	1,141,014	871,169	215,910	238,831	-106,931	10,483,313	756,422	11,239,735	
2005		204,694	1,226,790	970,786	224,547	253,337	-119,497	11,255,608	812,482	12,068,090	
2006		228,000	1,316,000	1,033,488	235,774	270,581	-137,287	12,013,295	867,868	12,881,163	
2007		251,280	1,408,120	1,102,951	248,742	289,140	-158,292	12,874,170	927,751	13,801,921	
2008		281,120	1,508,097	1,180,158	265,905	309,499	-175,704	13,828,681	999,664	14,828,345	
2009		306,339	1,610,647	1,232,313	284,704	326,795	-190,990	14,663,656	1,057,645	15,721,301	
2001	1	35,873	239,586	157,070	47,744	47,817	-21,432	1,953,041	145,436	2,098,477	2,247,907
	2	35,072	224,243	158,079	47,349	49,753	-20,980	2,207,859	139,052	2,346,911	2,284,530
	3	36,613	229,890	160,657	47,428	51,102	-21,731	2,460,305	165,156	2,625,462	2,280,947
	4	32,442	242,721	164,843	46,211	51,848	-15,857	1,867,069	162,356	2,029,425	2,283,691
2002	1	45,748	248,840	169,217	51,969	52,257	-26,843	2,044,517	146,411	2,190,929	2,371,836
	2	38,940	239,929	172,715	50,476	52,739	-21,987	2,336,835	149,464	2,486,299	2,431,092
	3	38,043	248,593	176,644	50,122	53,377	-21,075	2,676,856	176,816	2,853,672	2,456,074
	4	31,376	265,898	180,985	49,433	54,142	-17,095	2,038,043	183,234	2,221,277	2,491,443



**Annex 1 (Ctd):Gross Value Added by Activity Constant 2001 Prices in Million Tshs**

Year	Quarter	Financial inter-mediation	Real estate	Public administration	Education	Other services	FISIM	All indust. at basic prices	Taxes on products	GDP at market prices	GDP, seasonally adjusted
2003	1	38,622	262,911	184,635	52,698	55,052	-21,401	2,154,819	163,321	2,318,141	2,505,779
	2	43,558	256,478	188,559	52,041	56,135	-24,191	2,485,077	157,855	2,642,932	2,602,000
	3	46,314	266,597	193,636	52,144	56,870	-26,247	2,872,339	184,527	3,056,865	2,611,187
	4	42,149	282,746	199,930	50,722	57,315	-25,315	2,210,127	195,669	2,405,796	2,708,481
2004	1	44,970	279,731	207,076	55,468	58,146	-25,931	2,327,792	170,812	2,498,605	2,759,797
	2	45,650	258,940	214,192	53,633	59,187	-25,737	2,643,531	164,219	2,807,750	2,753,934
	3	48,131	282,532	221,350	54,140	60,229	-27,582	3,069,082	212,095	3,281,178	2,838,856
	4	46,024	319,811	228,551	52,670	61,270	-27,680	2,442,908	209,295	2,652,203	2,900,410
2005	1	45,596	300,966	235,038	57,182	62,078	-26,715	2,460,002	180,016	2,640,018	2,809,655
	2	53,007	278,664	239,907	55,775	62,749	-31,269	2,837,793	185,089	3,022,882	2,945,661
	3	49,855	324,131	245,177	56,550	63,672	-29,663	3,336,528	218,659	3,555,187	3,162,991
	4	56,236	323,029	250,664	55,040	64,838	-31,850	2,621,285	228,718	2,850,003	3,138,085
2006	1	56,131	347,418	253,561	61,079	66,006	-33,586	2,699,427	199,695	2,899,123	3,528,468
	2	53,480	288,480	255,904	58,912	67,194	-32,352	3,088,508	202,648	3,291,155	3,033,429
	3	59,366	350,671	259,537	59,489	68,236	-34,803	3,528,108	229,449	3,757,557	3,137,878
	4	59,023	329,431	264,486	56,295	69,144	-36,546	2,697,251	236,076	2,933,328	3,240,621

**Annex 1 (Ctd):Gross Value Added by Activity Constant 2001 Prices in Million Tshs**

Year	Quarter	Financial inter-mediation	Real estate	Public administration	Education	Other services	FISIM	All indust. at basic prices	Taxes on products	GDP at market prices	GDP, seasonally adjusted
2007	1	42,618	359,810	269,366	65,149	70,247	-24,771	2,829,457	198,760	3,028,217	3,360,376
	2	59,361	332,296	273,239	61,772	71,545	-37,455	3,270,644	212,552	3,483,196	3,482,372
	3	70,964	360,201	277,704	61,446	72,933	-45,302	3,774,486	252,667	4,027,153	3,468,744
	4	78,338	355,813	282,642	60,376	74,415	-50,764	2,999,583	263,772	3,263,356	3,499,095
2008	1	50,607	386,044	288,309	66,850	75,728	-31,041	3,025,679	216,860	3,242,539	3,705,400
	2	66,913	359,153	294,518	66,738	76,684	-41,642	3,496,869	234,541	3,731,409	3,688,240
	3	79,073	388,054	298,087	66,500	77,860	-49,665	4,115,500	268,778	4,384,278	3,763,288
	4	84,526	374,846	299,244	65,817	79,227	-53,356	3,190,633	279,485	3,470,118	3,828,128
2009	1	55,417	407,804	301,914	72,105	80,208	-34,114	3,181,054	232,694	3,413,748	3,653,403
	2	79,146	367,405	306,030	71,297	81,133	-50,111	3,621,674	235,431	3,857,106	3,957,806
	3	92,391	401,043	310,138	70,786	82,157	-57,488	4,356,310	276,640	4,632,950	4,022,646
	4	79,385	434,395	314,231	70,516	83,297	-49,277	3,504,618	312,879	3,817,497	4,087,485
2010	1	59,702	436,688	318,895	76,380	84,863	-36,453	3,407,890	245,513	3,653,403	3,691,046

**p = provisional, r = revised**

**Annex 2: Gross Value Added by Activity Constant 2001 prices – Percentage Changes**

Year	Quarter	Agriculture	Fishing	Mining and quarrying	Manufacturing	Electricity	Construction	Wholesale and retail trade	Hotels and restaurants	Transport and communication
2001										
2002		4.9	6.8	16.9	7.5	5.6	11.9	8.3	6.4	6.8
2003		3.1	6.0	17.1	9.0	6.7	13.8	9.7	3.2	7.1
2004		5.9	6.7	16.0	9.4	7.1	13.0	5.8	3.6	10.5
2005		4.3	6.0	16.1	9.6	8.5	10.1	6.7	5.6	9.4
2006		3.8	5.0	15.6	8.5	-0.5	9.5	9.5	4.3	8.6
2007		4.0	4.5	10.7	8.7	10.1	9.7	9.8	4.4	10.1
2008		4.6	5.0	2.5	9.9	5.6	10.5	10.0	4.5	10.8
2009		3.2	2.7	1.2	8.0	7.9	7.5	7.5	4.4	23.1
2002	1	1.0	13.1	16.8	3.5	6.2	11.0	1.9	5.4	5.2
	2	4.0	12.2	14.9	-0.6	5.0	9.6	7.1	10.9	5.0
	3	9.5	2.9	16.1	12.1	-5.4	19.0	6.3	5.5	5.5
	4	0.3	-1.5	20.4	14.0	15.6	8.3	18.0	4.5	11.8
	<b>Annual</b>	<b>4.9</b>	<b>6.8</b>	<b>16.9</b>	<b>7.5</b>	<b>5.6</b>	<b>11.9</b>	<b>8.3</b>	<b>6.4</b>	<b>6.8</b>
2003	1	2.5	3.2	7.8	13.7	0.0	8.1	2.8	4.9	8.5
	2	2.2	-2.3	15.6	9.4	15.6	20.6	2.9	2.6	11.1
	3	4.1	11.1	21.7	5.3	20.6	14.2	11.4	1.6	8.5
	4	2.4	14.5	25.2	8.6	-4.7	11.5	19.8	4.0	0.2
	<b>Annual</b>	<b>3.1</b>	<b>6.0</b>	<b>17.1</b>	<b>9.0</b>	<b>6.7</b>	<b>13.8</b>	<b>9.7</b>	<b>3.2</b>	<b>7.1</b>

**Annex 2: Gross Value Added by Activity Constant 2001 prices – Percentage Changes**

Year	Quarter	Agriculture	Fishing	Mining and quarrying	Manufacturing	Electricity	Construction	Wholesale and retail trade	Hotels and restaurants	Transport and communication
2004	1	4.6	6.8	18.3	7.5	-2.7	30.5	8.9	-0.8	4.5
	2	8.8	0.2	18.0	7.7	5.6	4.0	3.2	3.9	2.8
	3	5.5	5.5	15.5	14.2	10.6	3.9	2.0	4.4	10.5
	4	2.6	15.5	11.8	7.9	15.4	16.6	8.6	7.4	25.9
	<b>Annual</b>	<b>5.9</b>	<b>6.7</b>	<b>16.0</b>	<b>9.4</b>	<b>7.1</b>	<b>13.0</b>	<b>5.8</b>	<b>3.6</b>	<b>10.5</b>
2005	1	3.4	16.8	7.5	9.1	11.4	-4.8	3.5	3.6	7.1
	2	3.5	12.9	3.1	12.5	5.7	5.1	8.8	5.2	15.7
	3	5.8	-7.1	12.3	6.0	6.8	29.8	7.3	2.6	14.2
	4	2.9	2.5	44.8	11.3	10.1	12.1	6.9	11.8	1.5
	<b>Annual</b>	<b>4.3</b>	<b>6.0</b>	<b>16.1</b>	<b>9.6</b>	<b>8.5</b>	<b>10.1</b>	<b>6.7</b>	<b>5.6</b>	<b>9.4</b>
2006	1	3.3	0.2	17.8	13.5	0.9	25.2	2.8	0.2	22.7
	2	6.7	6.5	19.9	10.9	3.3	10.5	21.4	3.3	6.0
	3	4.0	20.2	23.7	7.2	2.1	-0.9	9.6	4.8	0.5
	4	-2.2	-5.9	3.4	3.6	-7.6	5.9	5.7	8.8	5.6
	<b>Annual</b>	<b>3.8</b>	<b>5.0</b>	<b>15.6</b>	<b>8.5</b>	<b>-0.5</b>	<b>9.5</b>	<b>9.5</b>	<b>4.3</b>	<b>8.6</b>

**Annex 2: Gross Value Added by Activity Constant 2001 prices – Percentage Changes**

Year	Quarter	Agriculture	Fishing	Mining and quarrying	Manufacturing	Electricity	Construction	Wholesale and retail trade	Hotels and restaurants	Transport and communication
2007	1	3.3	14.4	18.2	4.7	9.7	5.9	16.0	3.8	-14.2
	2	3.5	-7.1	8.9	9.8	12.7	-1.5	4.8	4.2	8.0
	3	5.3	-4.4	5.2	9.1	7.6	6.2	7.7	6.2	26.0
	4	2.0	18.9	11.0	11.0	10.6	28.5	11.5	3.3	25.2
	<b>Annual</b>	<b>4.0</b>	<b>4.5</b>	<b>10.7</b>	<b>8.7</b>	<b>10.1</b>	<b>9.7</b>	<b>9.8</b>	<b>4.4</b>	<b>10.1</b>
2008	1	7.0	-21.3	-1.9	7.0	2.7	8.0	10.2	4.5	13.4
	2	5.3	13.8	15.3	5.3	-2.1	-1.8	12.2	3.6	9.0
	3	4.8	30.8	4.5	10.2	6.3	34.0	12.0	3.5	8.1
	4	-1.4	-0.5	-6.9	16.2	15.6	2.6	6.6	6.4	13.1
	<b>Annual</b>	<b>4.6</b>	<b>5.0</b>	<b>2.5</b>	<b>9.9</b>	<b>5.6</b>	<b>10.5</b>	<b>10.0</b>	<b>4.5</b>	<b>10.8</b>
2009	1	0.3	11.7	-29.2	8.4	7.0	7.4	11.5	3.0	10.1
	2	0.8	7.8	-18.0	8.3	10.7	-0.6	4.7	3.9	13.7
	3	6.4	-3.0	29.7	7.3	11.2	-5.4	7.8	4.9	5.7
	4	2.8	-3.6	24.5	8.2	3.4	27.6	6.6	5.6	14.4
	<b>Annual</b>	<b>3.2</b>	<b>2.7</b>	<b>1.2</b>	<b>8.0</b>	<b>7.9</b>	<b>7.5</b>	<b>7.5</b>	<b>4.4</b>	<b>23.1</b>
2010	1	1.5	13.8	33.5	5.0	5.5	5.2	12.8	1.4	10.9

p = provisional, r = revised

**Annex 2 (Ctd):Gross Value Added by activity Constant 2001 prices – Percentage Changes**

Year	Quarter	Financial inter-mediation	Real estate and business services	Public administration	Education	Other services	FISIM	All indust. at basic prices	Taxes on products	GDP at market prices	GDP, seasonally adjusted
2001											
2002		10.1	7.1	9.2	7.0	6.0	8.8	7.2	7.2	7.2	
2003		10.7	6.5	9.6	2.8	6.0	11.7	6.9	6.9	6.9	
2004		8.3	6.8	13.6	4.0	6.0	10.1	7.8	7.8	7.8	
2005		10.8	7.5	11.4	4.0	6.1	11.8	7.4	7.4	7.4	
2006		11.4	7.3	6.5	5.0	6.8	14.9	6.7	6.8	6.7	
2007		10.2	7.0	6.7	5.5	6.9	15.3	7.2	6.9	7.1	
2008		11.9	7.1	7.0	6.9	7.0	11.0	7.4	7.8	7.4	
2009		9.0	6.8	4.4	7.1	5.6	8.7	6.0	5.8	6.0	
2002	1	27.5	3.9	7.7	8.8	9.3	25.2	4.7	0.7	4.4	3.9
	2	11.0	7.0	9.3	6.6	6.0	4.8	5.8	7.5	5.9	2.5
	3	3.9	8.1	10.0	5.7	4.5	-3.0	8.8	7.1	8.7	1.0
	4	-3.3	9.5	9.8	7.0	4.4	7.8	9.2	12.9	9.5	1.4
	<b>Annual</b>	<b>10.1</b>	<b>7.1</b>	<b>9.2</b>	<b>7.0</b>	<b>6.0</b>	<b>8.8</b>	<b>7.2</b>	<b>7.2</b>	<b>7.2</b>	
2003	1	-15.6	5.7	9.1	1.4	5.3	-20.3	5.4	11.5	5.8	0.6
	2	11.9	6.9	9.2	3.1	6.4	10.0	6.3	5.6	6.3	3.8
	3	21.7	7.2	9.6	4.0	6.5	24.5	7.3	4.4	7.1	0.4
	4	34.3	6.3	10.5	2.6	5.9	48.1	8.4	6.8	8.3	3.7
	<b>Annual</b>	<b>10.7</b>	<b>6.5</b>	<b>9.6</b>	<b>2.8</b>	<b>6.0</b>	<b>11.7</b>	<b>6.9</b>	<b>6.9</b>	<b>6.9</b>	

**Annex 2 (Ctd):Gross Value Added by activity Constant 2001 prices – Percentage Changes**

Year	Quarter	Financial inter-mediation	Real estate and business services	Public administration	Education	Other services	FISIM	All indust. at basic prices	Taxes on products	GDP at market prices	GDP, seasonally adjusted
2004	1	16.4	6.4	12.2	5.3	5.6	21.2	8.0	4.6	7.8	1.9
	2	4.8	1.0	13.6	3.1	5.4	6.4	6.4	4.0	6.2	-0.2
	3	3.9	6.0	14.3	3.8	5.9	5.1	6.8	14.9	7.3	3.1
	4	9.2	13.1	14.3	3.8	6.9	9.3	10.5	7.0	10.2	2.2
	<b>Annual</b>	<b>8.3</b>	<b>6.8</b>	<b>13.6</b>	<b>4.0</b>	<b>6.0</b>	<b>10.1</b>	<b>7.8</b>	<b>7.8</b>	<b>7.8</b>	
2005	1	1.4	7.6	13.5	3.1	6.8	3.0	5.7	5.4	5.7	-3.1
	2	16.1	7.6	12.0	4.0	6.0	21.5	7.3	12.7	7.7	4.8
	3	3.6	14.7	10.8	4.5	5.7	7.5	8.7	3.1	8.4	7.4
	4	22.2	1.0	9.7	4.5	5.8	15.1	7.3	9.3	7.5	-0.8
	<b>Annual</b>	<b>10.8</b>	<b>7.5</b>	<b>11.4</b>	<b>4.0</b>	<b>6.1</b>	<b>11.8</b>	<b>7.4</b>	<b>7.4</b>	<b>7.4</b>	
2006	1	23.1	15.4	7.9	6.8	6.3	25.7	9.7	10.9	9.8	12.4
	2	0.9	3.5	6.7	5.6	7.1	3.5	8.8	9.5	8.9	-14.0
	3	19.1	8.2	5.9	5.2	7.2	17.3	5.7	4.9	5.7	3.4
	4	5.0	2.0	5.5	2.3	6.6	14.7	2.9	3.2	2.9	3.3
	<b>Annual</b>	<b>11.4</b>	<b>7.3</b>	<b>6.5</b>	<b>5.0</b>	<b>6.8</b>	<b>14.9</b>	<b>6.7</b>	<b>6.8</b>	<b>6.7</b>	

**Annex 2 (Ctd):Gross Value Added by activity Constant 2001 prices – Percentage Changes**

Year	Quarter	Financial inter-mediation	Real estate and business services	Public administration	Education	Other services	FISIM	All indust. at basic prices	Taxes on products	GDP at market prices	GDP, seasonally adjusted
2007	1	-24.1	3.6	6.2	6.7	6.4	-26.2	4.8	-0.5	4.5	3.7
	2	11.0	15.2	6.8	4.9	6.5	15.8	5.9	4.9	5.8	3.6
	3	19.5	2.7	7.0	3.3	6.9	30.2	7.0	10.1	7.2	-0.4
	4	32.7	8.0	6.9	7.2	7.6	38.9	11.2	11.7	11.3	0.9
	<b>Annual</b>	<b>10.2</b>	<b>7.0</b>	<b>6.7</b>	<b>5.5</b>	<b>6.9</b>	<b>15.3</b>	<b>7.2</b>	<b>6.9</b>	<b>7.1</b>	
2008	1	18.7	7.3	7.0	2.6	7.8	25.3	6.9	9.1	7.1	5.9
	2	12.7	8.1	7.8	8.0	7.2	11.2	6.9	10.3	7.1	-0.5
	3	11.4	7.7	7.3	8.2	6.8	9.6	9.0	6.4	8.9	2.0
	4	7.9	5.3	5.9	9.0	6.5	5.1	6.4	6.0	6.3	1.7
	<b>Annual</b>	<b>11.9</b>	<b>7.1</b>	<b>7.0</b>	<b>6.9</b>	<b>7.0</b>	<b>11.0</b>	<b>7.4</b>	<b>7.8</b>	<b>7.4</b>	
2009	1	9.5	5.6	4.7	7.9	5.9	9.9	5.1	7.3	5.3	-4.6
	2	18.3	2.3	3.9	6.8	5.8	20.3	3.6	0.4	3.4	8.3
	3	16.8	3.3	4.0	6.4	5.5	15.8	5.9	2.9	5.7	1.6
	4	-6.1	15.9	5.0	7.1	5.1	-7.6	9.8	11.9	10.0	1.6
	<b>Annual</b>	<b>9.0</b>	<b>6.8</b>	<b>4.4</b>	<b>7.1</b>	<b>5.6</b>	<b>8.7</b>	<b>6.0</b>	<b>5.8</b>	<b>6.0</b>	
2010	1	7.7	7.1	5.6	5.9	5.8	6.9	7.1	5.5	7.0	1.0

p = provisional, r = revised



# National Bureau of Statistics

Director General P.O. Box 796 Dar es Salaam  
Telephone +255 22 2122724  
General Office P.O. Box 796 Dar es Salaam  
Telephone +255 22 2122722/3  
Fax: +255 22 2130852  
E-mail: [dg@nbs.go.tz](mailto:dg@nbs.go.tz), [Website [www.nbs.go.tz](http://www.nbs.go.tz)]

## ***Vision***

*To be the authoritative source of statistical information pertaining to socio-economic conditions in the country, an institution able to provide such information most effectively, a point of reference for statistical methodologies and standards.*

## ***Mission***

*To facilitate planning and decision making within the government and the business community, to stimulate research and inform public debate through the provision of relevant, reliable and timely statistics and a quality statistical service in general.*