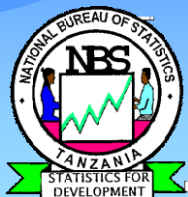




THE UNITED REPUBLIC OF TANZANIA

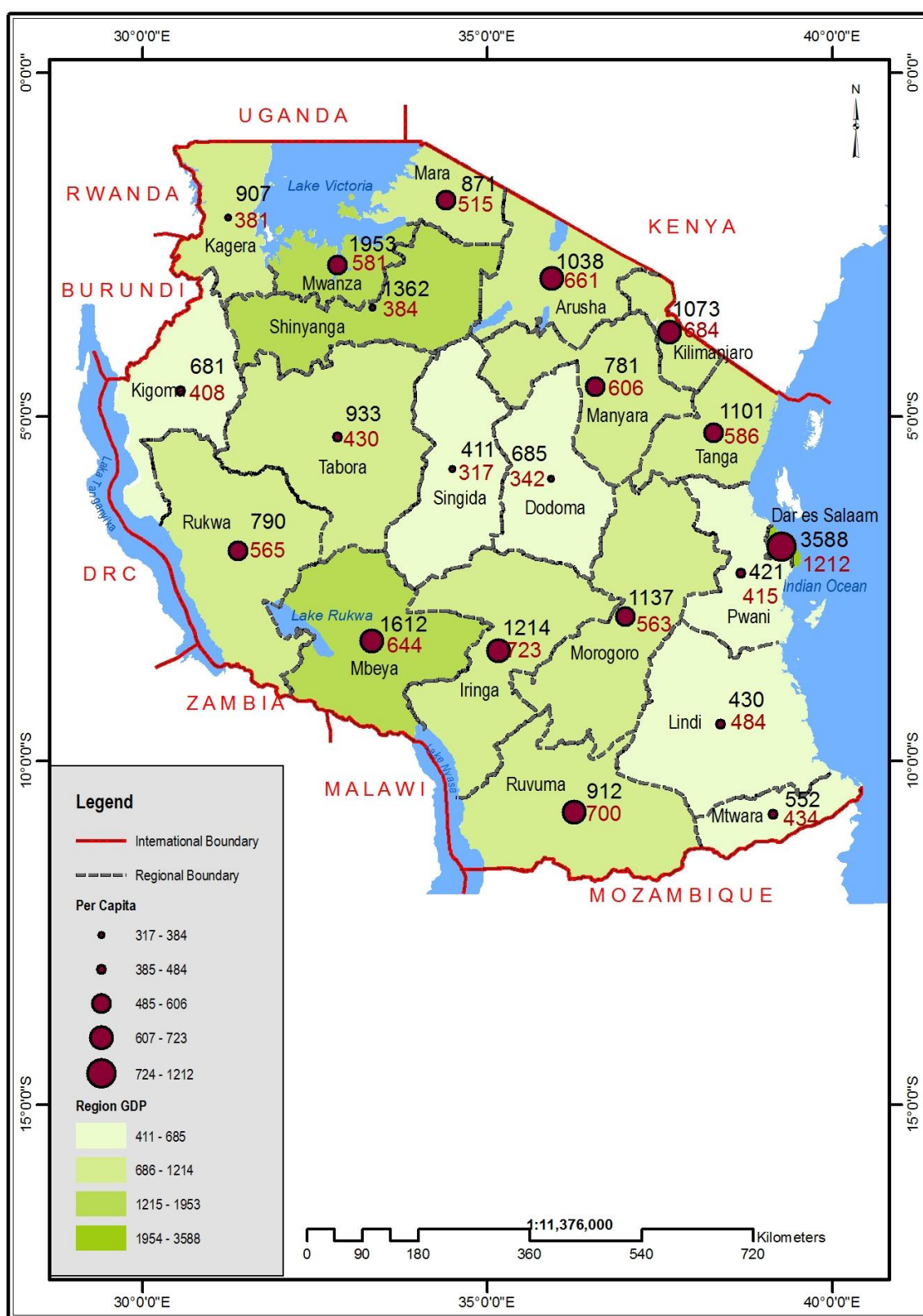
NATIONAL ACCOUNTS OF TANZANIA MAINLAND 2000 - 2010



**National Bureau of Statistics
Ministry of Finance
Dar-es-Salaam**

September, 2011

TANZANIA REGIONAL GDP (BILLIONS SHS) AND PER CAPITA GDP (000'SHS)



PREFACE

The Publication “National Accounts of Tanzania Mainland 2000 - 2010” is the third edition in the series of the Publications with GDP at 2001 prices. It contains time series of main aggregates at current and constant prices from 2000 to 2010.

The adoption of the United Nations System of National Accounts - SNA 1993 methods makes it possible to compare the Tanzania national accounts aggregates with those of other countries.

The main data sources used in the compilation of the national accounts estimates include, the Household Budget Survey (HBS) 2001, the Agriculture Sample Census 2002/03, the Integrated Labour Force Survey 2001, Annual Survey of Industrial Production, the Foreign Direct Investment Survey 2006 and the 2002 Population and Housing Census. Secondary information was extracted from administrative records such as; import and export of goods and services, Government Finance Statistics and Value Added Tax (VAT) collections. Specific studies such as the 1992 Input-Output Table of Tanzania were also used.

I recognize the contribution from numerous organizations both public and private which provided basic data and information. National Bureau of Statistics (NBS) also welcomes views and comments from users for improving the National Accounts estimates in the future.



Dr. Albina A. Chuwa
Director General,
National Bureau of Statistics
Dar es Salaam.

CONTENTS

	Page
I. INTRODUCTION.....	1
II. CONCEPTS AND DEFINITIONS	1
III. ECONOMIC ACTIVITIES.....	3
IV. METHODOLOGY	6
V. COMPILATION BY ACTIVITY	6
VI. GRAPHS AND CHARTS.....	10
VII. EXPENDITURE ON GROSS DOMESTIC PRODUCT.....	24
VIII. DISPOSABLE INCOME	27
IX. EXTERNAL TRANSACTIONS	30
X. CAPITAL FORMATION	32
XI. REGIONAL GROSS DOMESTIC PRODUCT	36

LIST OF GRAPHS

Graph 1: Average Annual Rates Growth of Total GDP at 2001 Prices	10
Graph 2: Average Annual Rates Growth of Agriculture & Fishing GDP at 2001 Prices.....	10
Graph 3: Average Annual Rates of Growth of Industry and Construction GDP at 2001 Prices.	11
Graph 4: Average Annual Rates of Growth of Service GDP at 2001 Prices	11

LIST OF CHARTS

Chart 1: Composition of GDP by Broad Group's at Current Market Prices in 2010	12
Chart 2: Percentage Composition of Expenditure on GDP at Current Prices.....	24
Chart 3: Composition of Net National Disposable Income at Current Market Prices, 2010	27
Chart 4: Percentage Shares of Export and Imports of Goods and Services to GDP at Current Market Prices.....	30
Chart 5: Gross Capital Formation at Current Prices by Public and Private Sector 2010.....	32
Chart 6: Regional Gross Domestic Product for Dar es Salaam and Mwanza Regions at Current Prices.	37
Chart 7: Per Capita Gross Domestic Product.....	38

LIST OF TABLES

Table 1: Gross Domestic Product and Some Allied Aggregates Summary Table.....	13
Table 2: Selected Important Ratios at Current Prices	14
Table 3: Gross Domestic Product Estimates at Current Prices by Economic Activity	15
Table 4: Shares of Gross Domestic Product at Current Prices by Economic Activity	16
Table 4a: Annual Growth Rates of Gross Domestic Product by Economic Activity	17
Table 5: Implicit Deflators of Gross Domestic Product by Economic Activities (2001 = 100)	18
Table 6: Gross Domestic Product at 2001 Prices by Economic Activity.....	19
Table 7: Shares of Gross Domestic Product at 2001 Prices by Economic Activity.....	20
Table 8: Gross Domestic Product of Agriculture and Fishing at Current Prices	21
Table 9: Gross Domestic Product of Agriculture and Fishing at 2001 Prices	21
Table 10: Gross Domestic Product of Industry & Construction at Current Prices	21
Table 11: Gross Domestic Product of Industry & Construction at 2001 Prices	22
Table 12: Gross Domestic Product of Services at Current Prices.....	22
Table 13: Gross Domestic Product of Services at 2001 Prices	23
Chart 2: Percentage Composition of Expenditure on GDP at Current Prices	24
Table 14: Gross Domestic Product by Type of Expenditure at Current Market Prices	25
Table 15: Gross Domestic Product by Type of Expenditure at Constant Market Prices	25
Table 16: Implicit Deflators of Gross Domestic Product by Type of Expenditure (2001 = 100)...	26
Chart 3: Composition of Net National Disposable Income at Current Market Prices, 2010	27
Table 17: National Disposable Income and Its Appropriation at Current Market Prices	28
Table 18: Capital Finance at Current Prices.....	28
Table 19: Relation Among National Accounting Aggregates at Current Basic Prices.....	29
Table 20: Relation Among National Accounting Aggregates at Current Market Prices	29
Chart 4: Percentage Shares of Export and Imports of Goods and Services to GDP at Current Market Prices	30
Table 21: International Transactions at Current Prices	31
Chart 5: Gross Capital Formation at Current Prices by Public and Private Sector 2010	32
Table 22: Gross Capital Formation at Current Prices	33
Table 23: Gross Capital Formation by Public and Private Sectors at Current Prices	33
Table 24: Gross Capital Formation at 2001 Prices	34
Table 25: Gross Fixed Capital Formation by Kind of Economic Activity at Current Prices	35
Table 26: Regional GDP at Current Prices	39

Table 27: Regional GDP at Current Prices (Percentages).....	40
Table 28: Regional Per Capita GDP at Current Prices.....	40

ANNUAL GROWTH RATE

Appendix 1: Average Annual Rates of Growth of total GDP at 2001 Prices	42
Appendix 2: Average Annual Rates of Growth of Agriculture and Fishing GDP at 2001 Prices ..	42
Appendix 3: Average Annual Rates of Growth of Industry & Construction GDP at 2001 Prices .	42
Appendix 4: Average Annual Rates of Growth of Services GDP at 2001 Prices.....	42

I. INTRODUCTION

The National Accounts of Tanzania Mainland 2000 - 2010 publication gives consolidated estimates of Gross Domestic Product (GDP) and other allied aggregates of Tanzania Mainland. It is the third edition in the series of Publications with GDP at 2001 prices. GDP figures are also available in the “Economic Survey 2010” published by the Ministry of Finance. The estimates for 2010 are provisional while those of 2009 have been revised.

The main source of the National Accounts Statistics data is surveys such as the Household Budget Survey (HBS) 2001, the Integrated Labour Force Survey 2001, the 2002/03 Agriculture Sample Census, Annual Survey of Industrial Production, the Foreign Direct Investment Survey 2006 and the 2002 Population and Housing Census. Additional annual data are also collected from all economic activities in Tanzania Mainland.

II. CONCEPTS AND DEFINITIONS

The Concepts and Definitions conform to the United Nations Recommendations on the subject as directed in the United Nations System of National Accounts (SNA 1993).

The following are definitions of the main aggregates:

The System of National Accounts (SNA)

A System of National Accounts is a coherent, consistent and integrated set of macro-economic accounts based on the internationally agreed concepts, definitions, and classifications and accounting procedures. In 1953, the United Nations Statistical Office produced the first version of “A System of National Accounts” which was later revised in 1968. Since then, the SNA has undergone extensive revisions in light of country experiences.

The version “SNA 1993” was published in 1993 and countries have been advised to adopt it. Generally, the SNAs basic structure has remained almost the same.

The following are short definitions of the main aggregates and are given here for the convenience of readers and users;

- Gross Domestic Product (GDP) is the sum of value added of all domestic producers in the economy. It represents the money

value of all goods and services produced within a country out of economic activity during a specified period, usually a year, before the provision of the consumption of fixed capital.

- GDP at basic prices excludes any taxes payable on products and includes any subsidies receivable on products while purchasers' prices include such taxes as well as trade and transport margins.
- GDP at market prices is equal to the GDP at basic prices plus taxes less subsidies on products.
- Gross National Income (GNI) is equal to GDP plus net primary income from abroad.
- Gross National Disposable Income is the sum of Gross National Income plus net current transfers from the rest of the world.
- Gross Fixed Capital Formation consists of net additions to the assets of producers' tangible reproducible goods whose expected lifetime use is more than one year.
- Production in an economic sense can be described as an activity carried out under the control and responsibility of an institutional unit that uses inputs of labour, capital, and intermediate goods and services to produce outputs of goods and services. These outputs must be of a kind that can be delivered to other units.
- Consumption of Fixed Capital is a cost of production, relating to the wear and tear of fixed assets in the process of their use. It measures the decline in the current value of the stock of fixed assets during the accounting period. This current value may differ substantially from the historic costs prevailing at the time when the assets were acquired.
- Compensation of Employees is the total remuneration payable by an enterprise to the employees for work done by them during the accounting period. Different from employees, workers who are the sole or joint owners of the unincorporated enterprise where they work are classified as self-employed. Workers engaged in production for own final consumption and unpaid family workers also fall in this category.
- Taxes on products are payable on goods and services when they are produced, sold or used. They include taxes on imports that become payable when products enter the country. Taxes on products are proportional to or vary otherwise with the value or quantity of the goods and services on which they are levied.
- Subsidies are current transfers that government pays to producers that constitute additions to the income receivable from their output.
- The Basic Price is the amount actually receivable by the producer, in other words the amount the producer pockets.

It does not include any taxes on products but, on the other hand, it includes subsidies on products.

- The Purchaser's Price, derived as the sum of all supply components, is the amount paid by the purchaser excluding deductible VAT. They include taxes on imports that become payable when products enter the country.

Geographical Coverage

The estimates presented in this report relate to Tanzania Mainland only.

Estimates of GDP by Region

Regional estimates of Gross Domestic Product at current prices are presented for the period of 2000 - 2010. With the exception of Agriculture, Mining and Manufacturing, estimates of the remaining activities are estimated on the number of registered business establishments in the region.

Household Final Consumption

This consists of the expenditure of resident households on goods and services. It includes goods produced for own consumption and imputed expenditures made by Government and Non-profit Institutions Serving Households (NPISHs) on behalf of households.

Government Final Consumption

This consists of expenditures incurred by both Central and Local Governments on goods and services other than those relating to the provision of health and education services.

III. ECONOMIC ACTIVITIES

Tanzania Mainland uses the International Standard of Industrial Classification (ISIC) Revision 3 which classifies economic activities into 15 categories namely; (A) Agriculture, Hunting and Forestry, (B) Fishing, (C) Mining and Quarrying; (D) Manufacturing; (E) Electricity, Gas and Water Supply; (F) Construction; (G) Wholesale and Retail Trade, Repair of motor vehicles, motorcycles, personal and household goods, (H) Hotels and Restaurants; (I) Transport, Storage and Communications; (J) Financial Intermediation, (K) Real Estate, Renting and Business Services (L) Public Administration and Defense, Compulsory Social Security; (M) Education, (N) Health and Social Work; (O) Other Community, Social and Personal Services.

A: Agriculture

Agriculture activities cover: Crops, Livestock, Forestry and Hunting.

(i) Crops

This activity covers: major food and cash crops as well as other crops. Major food crops include maize, paddy, sorghum, millet, cassava, beans, irish potatoes and sweet potatoes. On the other hand, major cash crops include cotton, tea, coffee, sisal, tobacco and cashew nuts.

Other crops include green bananas, vegetables, fresh fruits, sugar cane, nuts, dried fruits, oil seeds and pyrethrum.

(ii) Livestock

The activity includes: slaughtered animals (cattle, goats, sheep and pigs); sold milk and other livestock products and by-products; sold chicken, other poultry and eggs; and changes in inventories of cattle, goat and sheep.

(iii) Forestry and Hunting

Forestry covers the production of logs, charcoal, fuel wood, honey and beeswax while hunting includes both animals hunted by tourists and domestic hunters, trophies and sold live animals

B: Fishing

Fishing activity in Tanzania Mainland covers the harvested fish from both marine and fresh waters including rivers, lakes and dams.

C: Mining and Quarrying

Mining is a primary activity which involves extraction of both underground and surface minerals and quarries. It includes solids such as coal and ores; liquids such as crude petroleum and gases such as natural gas. Supplemental activities such as dressing, washing, cleaning, grading, milling, floatation, melting, pelleting, topping e.t.c are also included.

D: Manufacturing

This activity involves the conversion of raw materials into finished goods. The main categories include; food, dairy products, grain mills, beverages, tobacco products, textiles, wood and paper products, chemicals, metals, non-metals, cement, machinery and other food products.

E: Electricity, Gas and Water Supply

The activity covers all establishments engaged in the generation, distribution and transmission of electricity and gas. It also includes production and distribution of water to various consumers. However, the small scale electricity generated in the country by individuals/households such as solar energy is not captured due to lack of data.

F: Construction

The activity covers the process of site preparation, complete construction of parts of civil engineering, installation or demolition of buildings or other structures. Construction of buildings consists of residential and non residential as well as rural own-account construction, whereas construction of other works consists of land improvement, roads and bridges, power stations, dams, wells and other structures.

G: Wholesale, Retail Trade and Repairs

This activity covers wholesale and retail trade, repairs of motor vehicles,

motorcycles as well as personal and household goods.

H: Hotels and Restaurants

The activity covers establishments engaged in running of hotels and restaurants.

I: Transport, Storage and Communication

Transport and Communication activities consist of land transport (road, rail), water, air transport and storage of goods. It also includes Posts and Telecommunication activities.

J: Financial Intermediation

The activity consists of establishments engaged in financial intermediation. These include the Bank of Tanzania, commercial banks, non bank financial institutions, insurance and bureau de changes.

K: Real Estate, Renting and Business Services

This covers real estate, renting and business services.

(i) Real Estate and Renting

This activity covers all types of dwellings both owner-occupied and rented. The dwellings (owner-occupied and rented) are categorized by urban and rural and further by types of construction materials used for the walls.

(ii) Business Services

The activity involves business service activities such as accountancy, legal, auditing, architects, consultancy, research and development.

L: Public Administration and Defense

Public administration covers activities of central, regional and local governments as well as compulsory social security funds.

M: Education

Covers public and private establishments that are engaged in delivering education services

N: Health and Social Work

Covers public and private establishments that are engaged in delivering health services

O: Other Community, Social and Personal Services

The activity covers establishments that are engaged in providing services such as sewage and refuse disposal, sanitation, recreational, cultural and sporting, activities of membership organizations and similar activities.

IV. METHODOLOGY

Overview of GDP Compilation

The methodologies used are based on the 1993 SNA. The following two approaches were recommended for the 2001 revision of National Accounts:

(i) Production Approach

In this approach, GDP estimates at market prices are derived by summing up the gross value added at basic prices of each industry and adding taxes less subsidies on products. This approach was used for the compilation of all sectors except the Government and Central Bank.

(ii) Expenditure Approach

Expenditure approach; considers the income expenditure for the purpose of consumption or capital formation. It was used in estimating GDP for the Government and the Central Bank. Not all products purchased by domestic buyer come from domestic production; some come from outside the country. Therefore, the GDP at market prices by this approach is derived by adding up the purchases that are made for final consumption, capital formation, and imports less export (net export).

V. COMPILATION BY ACTIVITY

Agriculture and Fishing

The benchmark level for estimates of crops, livestock, forestry, hunting and fishing were obtained from the Household Budget Survey (HBS), 2001; data from the Ministry of Agriculture, Food Security and Cooperatives; and Ministry of Industry, Trade and Marketing. Intermediate consumption estimates for items other than seeds were estimated on the basis of the fertilizers used.

Mining and Quarrying

Data on quantities of minerals produced by type were obtained from the Ministry of Energy and Minerals. The mineral export values were used and intermediate consumption for each mineral was estimated based on the 1992 input output ratios.

Manufacturing

The GDP for this activity was estimated using data from the Quarterly Survey of Industrial Production that provides Production Indices of Manufacturing Industry (PIMI) and Producer Price Index (PPI). Estimates for the Informal Sector activities were estimated on the basis of the National Informal Sector Survey (ISS), 1991 and the Informal Sector Survey, 1995 conducted in Dar es Salaam.

Electricity, Gas and Water Supply

The estimates at current prices for electricity and gas are based on the analysis of the annual accounts of respective companies. The constant price indicator is a weighted average of electricity production for domestic, commercial, industrial activities and public lighting in Tanzania Mainland as well as Zanzibar.

For water supply, the public sector estimates are based on government accounts and urban water authorities. The number of water connections was used as an indicator for constant price estimates. The private sector includes private suppliers and water collection from rivers and other sources.

Construction

The estimates at current prices are based on the analysis of Government and Parastatal Accounts. Current price estimates are deflated by a building material cost index produced by the National Construction Council (NCC). Rural own account construction estimates are based on current estimates of the value of such houses, the estimated lifetime and population growth. The Consumer Price Index (CPI) was used as a deflator for the rural own account construction.

Estimates for construction of urban dwellings are based on their current values, expected lifetime and the population growth. The deflator is the building material cost index.

Wholesale, Retail Trade and Repairs

The benchmark for wholesale and retail trade was estimated on the basis of the Survey of Construction, Trade and Transport (SCTT), 1996 and the National Informal Sector Survey (ISS), 1991.

Annual movements are based on estimated trade margins and the production levels of monetary agriculture, mining, and manufacturing together with the relevant components of imports.

Hotels and Restaurants

The benchmark estimates for hotels and restaurants are also estimated based on the SCTT 1996 and the 1991 ISS. Annual movements are estimated on the basis of tourists arrival, tourists' expenditures and annual population growth.

Transport, Storage and Communication

The road transport industry includes only those operators whose predominant business is transportation. Annual movement is based on the weighted average of monetary agriculture production and adjusted population. The CPI for transport was used as a deflator.

Other modes of transport consist of rail transport, water transport, and air transport. Current price estimates were derived from the accounts of the respective operators while constant prices are based on volume of goods and passengers carried.

Estimates at current prices for communication activities are derived from

respective operators' (Posts and Telecommunication Companies) accounts. The constant price estimates are based on the number of posted letters and parcels handled (posts) and deflated output (telecommunications). The deflator is the overall CPI.

Financial Intermediation

The current price estimates for financial intermediation are based on the analysis of respective company accounts, both public and private sectors. Constant price estimates are based on levels of employment, lending as well as deposits. The indicators for insurance and bureau de change activities are the total number of policies in force and level of employment respectively.

Real Estate, Renting and Business Services

(i) Real Estate and Renting

The dwellings (owner-occupied and rented) are grouped into urban and rural. They are further classified by types of construction materials used for the walls. Information on urban and rural population growth rates was used to estimate growth rates in the number of dwellings in each category in the benchmark year. The estimated growth rates are used each year to extrapolate the base year figures. The base year estimates were obtained from the market value of rent for dwellings in each category as reported in the 2001 HBS.

The resultant rents for urban and rural dwellings are summed up for each type of

construction material. The proportions of each type of owner occupied dwelling were also obtained from the analysis of HBS dataset. These proportions were used to split the values of rent for each type of dwelling between owner-occupied and rented dwellings. The CPI for rent is used as the price indicator to obtain value indices for both categories.

(ii) Business Services

Business services were estimated on the basis of the quantity indicators from trade, mining, manufacturing and hotels activities. The CPI (all items) was used as the deflator.

Public Administration and Defense

Estimates were derived directly from Government accounts. The value added was derived as a total of personal emoluments, pensions, gratuities and a portion of travelling allowances. The indicator for growth is level of employment.

Education

Gross Value Added (GVA) for public schools at current prices to a larger extent is estimated from government expenditure on education. Gross output at constant prices was estimated by deflating output at current prices using CPI on education.

The value added at current prices for private schools was estimated by inflating gross output at constant prices using CPI for education. Gross output at constant prices was estimated based on the number of enrolled students.

Health and Social Work

Gross Value Added for public health facilities at current prices were estimated from government expenditure on health. Gross value added at constant prices was estimated by deflating GVA at current prices using CPI on health. The value added at current prices for private health facilities was estimated by inflating GVA at constant prices using CPI for health. GVA at constant prices was estimated on the basis of the number of patients attended.

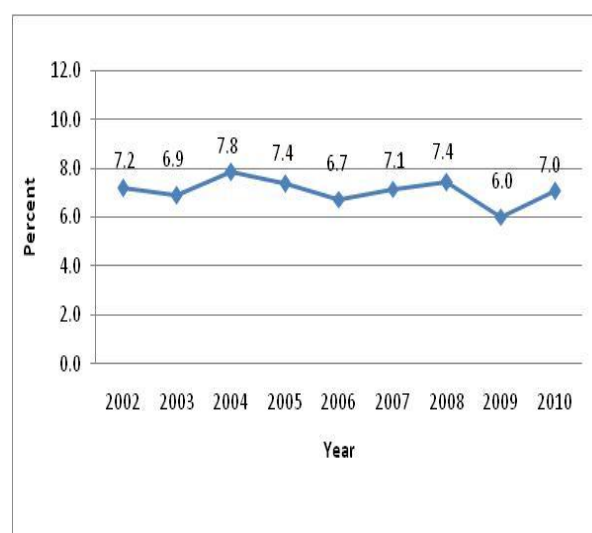
Other Community and Personal Services

Gross Output at Current prices was estimated by extrapolating benchmark output using value index derived from CPI (all items) and index of urban population growth rates. Gross Output at constant prices was estimated by extrapolating benchmark output using growth rates of urban population as a quantity index.

VI. GRAPHS AND CHARTS

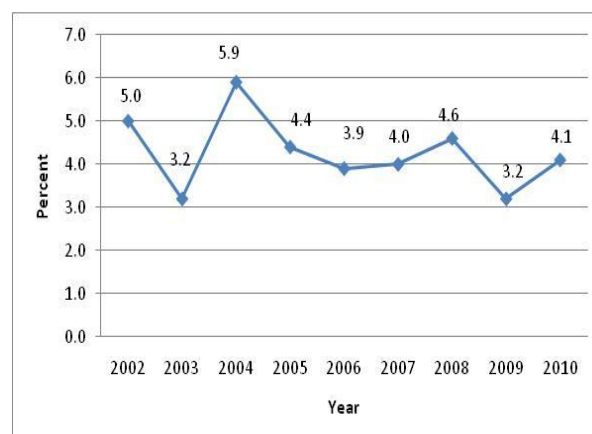
Graph 1 shows the average annual growth rates of total GDP at 2001 prices for the period of 2002 to 2010. The results show that GDP in real terms grew by 7.0 percent in 2010 compared to 6.0 percent in 2009. The highest and lowest growth rates were recorded in 2004 and 2009 respectively.

Graph 1: Average Annual Growth Rates of Total GDP at 2001 Prices



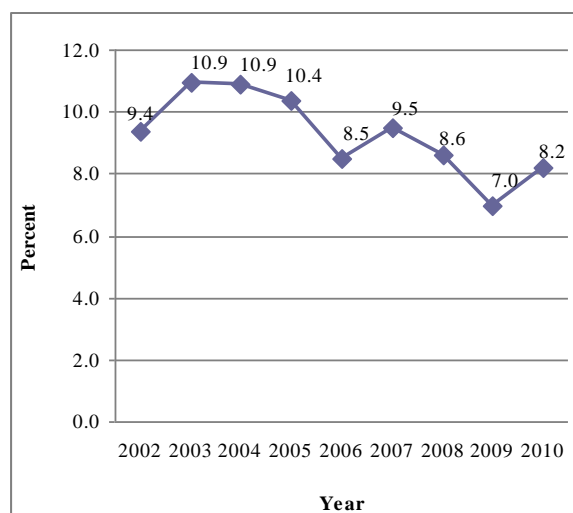
Graph 2 shows that, in 2010, agriculture and fishing activities grew by 4.1 percent compared to 3.2 percent in 2009. The increase in the growth rate was due to good weather during 2009/10 agricultural season.

Graph 2: Average Annual Growth Rates of Agriculture & Fishing GDP at 2001 Prices



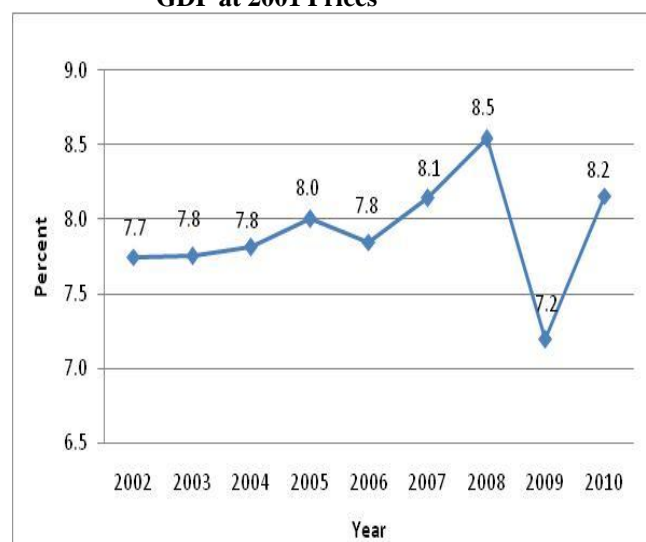
Graph 3 shows that, Industry and Construction activities grew by 8.2 percent in 2010 compared to 7.0 percent in 2009. The increase in growth rate was attributed to notable increase in mineral production and electricity generation during the reference period. The highest growth rate of 10.9 percent was simultaneously recorded in 2003 and 2004 while the lowest growth rate of 7.0 percent was recorded in 2009.

Graph 3: Average Annual Growth Rates of Industry and Construction GDP at 2001 Prices.



Graph 4 shows that the Service activities grew by 8.2 percent in 2010 compared to 7.2 percent in 2009. However, the lowest increase was 7.2 throughout the period of 2002 – 2010.

Graph 4: Average Annual Growth Rates of Service GDP at 2001 Prices



Gross Domestic Product at Constant Basic Prices

Gross Domestic Product (GDP) is among the most important economic indicators. Total GDP at 2001 prices after adjusting for Financial Intermediation Services Indirectly Measured (FISIM) and taxes were 15, 721 billion TShs and 16, 829 billion TShs in 2009 and 2010 respectively. The average annual growth rate in 2010 was 7.0 percent. In 2010 the highest and lowest growth rates of 22.1 percent and 1.5 percent were recorded in communication and fishing activities respectively.

Shares of GDP at Current Market Prices

Chart 1 shows that, in 2010 shares of Agriculture and Fishing activities were 25.5 percent, Industry and Construction 22.4 percent, Services including FISIM 42.8 percent and taxes 9.3 percent.

Chart 1: Composition of GDP by Broad Group's at Current Market Prices in 2010

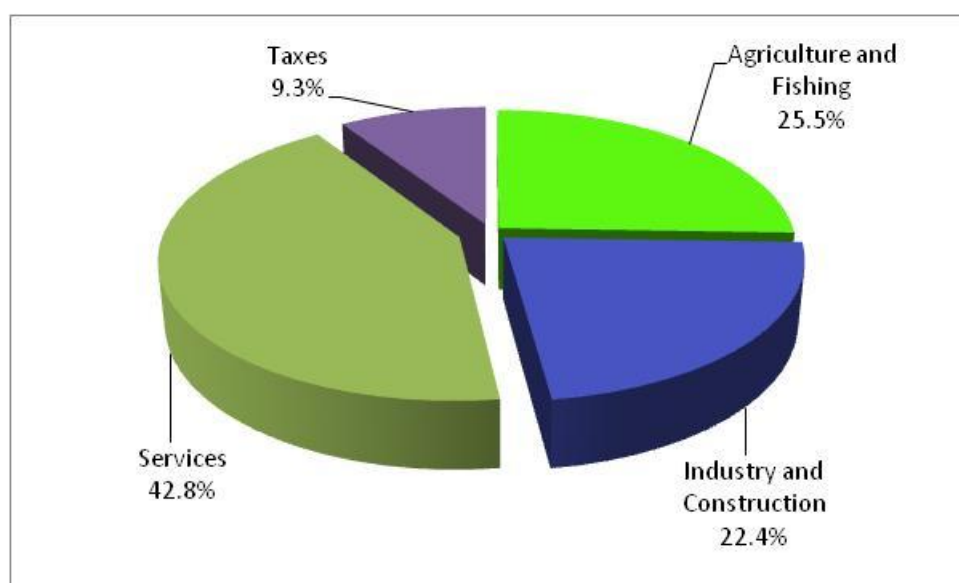


Table 1: Gross Domestic Product and Some Allied Aggregates Summary Table

TShs billions											
Heading	2000	2001	2002	2003	2004	2005	2006	2007	2008	2009r	2010p
AT CURRENT PRICES											
1. Gross Domestic Product at b.p	7,624	8,488	9,740	11,275	12,973	14,598	16,278	18,990	22,452	25,510	29,298
2. Gross Domestic Product at m.p.	8,153	9,100	10,445	12,107	13,972	15,965	17,941	20,948	24,782	28,213	32,293
3. Gross National Income at b.p	7,557	8,449	9,718	11,049	12,779	14,386	16,197	18,894	22,311	25,412	29,197
4. Gross National Income at m.p.	8,086	9,061	10,423	12,062	13,778	15,754	17,861	20,876	24,640	28,115	32,192
5. Net Domestic Product at b.p	6,730	7,467	8,615	10,064	11,608	12,992	14,439	16,936	20,150	23,035	26,633
6. Net National Income at b.p	6,663	7,428	8,593	10,019	11,414	12,781	14,358	16,840	20,008	22,937	26,532
7. Net National Income at m.p.	7,192	8,040	9,298	10,850	12,413	14,148	16,021	18,799	22,338	25,640	29,527
8. Gross Fixed Capital Formation	1,333	1,547	1,751	2,289	3,096	3,960	4,883	6,119	7,274	8,021	10,178
9. Gross Capital Formation	1,371	1,588	1,795	2,332	3,153	4,024	4,958	6,210	7,381	8,173	10,343
10. Government Final Consump. Exp. at m.p	952	1,079	1,373	1,859	2,362	2,805	3,145	4,039	4,322	4,927	5,208
11. Household Final Consumption Exp. At m.p	6,381	6,822	7,512	8,442	9,353	10,582	12,195	14,231	16,460	18,477	20,209
12. Savings at m.p	206	648	815	1,134	1,396	1,294	1,433	1,341	2,332	3,144	5,295
AT 2001 PRICES											
13. Gross Domestic Product at b.p	8,008	8,488	9,096	9,722	10,483	11,256	12,013	12,874	13,829	14,664	15,700
14. Gross Fixed Capital Formation	1,381	1,547	1,670	1,903	2,101	2,494	2,894	3,313	3,572	3,929	4,333
15. Gross Capital Formation	1,421	1,588	1,711	1,946	2,144	2,535	2,939	3,358	3,617	3,982	4,386
(Tshs)											
PER CAPITA GDP	2000	2001	2002	2003	2004	2005	2006	2007	2008	2009r	2010p
16. Per Capita GDP at Current Market prices	255,575	276,741	310,991	353,496	396,154	441,063	478,100	547,081	627,787	693,470	770,464
17. Per Capita GDP at Current Basic prices	238,987	258,130	290,012	329,212	367,828	403,283	433,783	495,932	568,771	627,046	698,990

NB: b.p. =>basic price
m.p. =>market prices.
Exp.=>Expenditure
r.=>revised
p.=>provisional

Table 2: Selected Important Ratios at Current Prices

Heading	Percentages										
	2000	2001	2002	2003	2004	2005	2006	2007	2008	2009r	2010p
1. Compensation of Employees to Net Domestic Product (NDP) at b.p.	19.9	19.3	18.1	16.7	15.6	15.1	15.2	14.8	17.1	15.6	14.2
2. Gross Capital formation to GDP at m.p.	16.0	17.4	18.4	22.4	28.1	33.3	38.5	45.0	49.8	52.0	61.5
3. Government Final Consumption Expenditure to Net National Disposable income at m.p	12.6	12.6	14.2	16.3	18.0	19.1	18.7	20.6	18.7	18.6	17.0
4. Household Final consumption Expenditure to Net National Disposable income at m.p	84.6	79.8	77.4	73.8	71.3	72.1	72.7	72.6	71.2	69.6	65.8
5. Savings to Net National Disposable income at m.p	2.7	7.6	8.4	9.9	10.6	8.8	8.5	6.8	10.1	11.8	17.2
6. GFCF at current prices / GDP at current b.p	17.5	18.2	18.0	20.3	23.9	27.1	30.0	32.2	32.4	31.4	34.7
7. GFCF at constant prices /GDP at constant b.p	17.3	18.2	18.4	19.6	20.0	22.2	24.1	25.7	25.8	26.8	27.6
8. Agriculture, Fishing, Hunting and Forestry to GDP at current b.p	33.5	32.9	32.5	32.5	33.3	31.8	30.4	30.0	29.7	28.8	28.1
9. Industry and construction to GDP at current b.p	19.2	19.3	21.1	22.5	22.3	22.7	22.9	23.3	23.1	24.3	24.7
10. Services to GDP at current b.p	48.5	48.8	47.4	45.9	45.3	46.5	47.8	47.8	48.3	48.2	48.4

Table 3: Gross Domestic Product Estimates at Current Prices by Economic Activity

TShs million											
Economic Activity	2000	2001	2002	2003	2004	2005	2006	2007	2008	2009r	2010p
Agriculture, Hunting and Forestry	2,407,300	2,636,193	2,988,383	3,479,646	4,116,444	4,410,478	4,708,556	5,413,257	6,374,476	6,945,213	7,782,138
Crops	1,772,952	1,945,945	2,236,209	2,641,586	3,122,896	3,272,143	3,452,690	3,983,327	4,700,326	5,187,080	5,757,659
Livestock	415,348	459,448	502,800	563,136	669,021	791,823	867,772	990,996	1,169,375	1,135,527	1,239,996
Forestry and Hunting	219,000	230,800	249,374	274,924	324,527	346,512	388,094	438,934	504,774	622,606	784,484
Fishing	145,297	153,660	172,989	187,693	207,025	225,658	241,454	277,189	296,592	399,715	459,673
Industry and construction	1,462,277	1,638,459	2,051,559	2,538,485	2,899,263	3,316,757	3,723,978	4,431,057	5,194,434	6,193,765	7,255,731
Mining and quarrying	119,175	159,979	220,000	288,200	357,368	457,431	576,363	742,932	839,513	941,094	1,072,847
Manufacturing	715,649	762,400	866,228	1,002,827	1,129,558	1,269,145	1,395,282	1,625,504	1,935,975	2,434,754	2,899,094
Electricity, gas	170,220	196,860	209,640	227,081	244,977	271,925	276,915	335,898	421,216	479,768	571,130
Water supply	37,233	43,840	48,666	53,925	61,474	68,605	75,809	84,982	93,310	104,263	113,691
Construction	420,000	475,380	707,025	966,452	1,105,886	1,249,651	1,399,609	1,641,741	1,904,420	2,233,885	2,568,968
Services	3,693,800	4,139,962	4,617,402	5,174,913	5,870,447	6,786,597	7,773,898	9,076,622	10,846,587	12,300,072	14,188,185
Trade and repairs	1,046,788	1,182,797	1,298,349	1,454,527	1,593,717	1,752,826	2,044,421	2,416,506	2,875,642	3,341,496	3,909,550
Hotels and restaurants	225,000	250,978	269,120	286,883	319,365	394,417	459,584	559,722	649,278	635,414	754,037
Transport	447,314	487,062	526,710	577,977	637,720	706,291	769,830	886,844	1,037,608	1,409,636	1,646,704
Communications	97,143	112,783	130,496	161,623	206,877	277,216	374,241	487,132	611,350	596,230	691,627
Financial intermediation	127,297	140,000	179,715	204,766	229,370	265,261	299,734	345,000	403,727	477,492	567,822
Real estate and business services	868,503	936,440	1,008,089	1,135,252	1,270,108	1,520,109	1,723,571	1,982,107	2,378,528	2,532,770	2,848,855
Public administration	540,229	640,649	754,654	866,917	1,076,215	1,278,881	1,440,913	1,652,556	2,026,815	2,282,763	2,579,522
Education	169,000	188,733	211,372	223,409	236,813	251,022	268,594	289,617	333,060	392,507	455,308
Health	97,373	118,972	151,993	174,789	200,933	233,032	275,726	327,658	383,360	454,990	532,339
Other social and personal services	75,153	81,548	86,904	88,770	99,329	107,542	117,284	129,482	147,221	176,775	202,422
Gross value added before adjustments	7,708,674	8,568,274	9,830,333	11,380,737	13,093,179	14,739,490	16,447,886	19,198,125	22,712,088	25,838,765	29,655,726
<i>less FISIM</i>	-85,035	-80,000	- 90,400	- 105,382	-120,588	- 141,723	-169,661	- 208,281	- 260,029	-328,478	-358,049
Gross value added at current basic prices	7,623,639	8,488,274	9,739,933	11,275,355	12,972,591	14,597,767	16,278,225	18,989,844	22,452,059	25,510,287	29,297,677
<i>add Taxes on products</i>	529,151	612,000	704,574	831,707	999,001	1,367,527	1,663,043	1,958,559	2,329,620	2,702,359	2,995,802
GDP at current market prices	8,152,790	9,100,274	10,444,507	12,107,062	13,971,592	15,965,294	17,941,268	20,948,403	24,781,679	28,212,646	32,293,479

Table 4: Shares of Gross Domestic Product at Current Prices by Economic Activity

	Percentage										
Economic Activity	2000	2001	2002	2003	2004	2005	2006	2007	2008	2009r	2010p
Agriculture, Hunting and Forestry	29.5	29.0	28.6	28.7	29.5	27.6	26.2	25.8	25.7	24.6	24.1
Crops	21.7	21.4	21.4	21.8	22.4	20.5	19.2	19.0	19.0	18.4	17.8
Livestock	5.1	5.0	4.8	4.7	4.8	5.0	4.8	4.7	4.7	4.0	3.8
Forestry and Hunting	2.7	2.5	2.4	2.3	2.3	2.2	2.2	2.1	2.0	2.2	2.4
Fishing	1.8	1.7	1.7	1.6	1.5	1.4	1.3	1.3	1.2	1.4	1.4
Industry and construction	17.9	18.0	19.6	21.0	20.8	20.8	20.8	21.2	21.0	22.0	22.4
Mining and quarrying	1.5	1.8	2.1	2.4	2.6	2.9	3.2	3.5	3.4	3.3	3.3
Manufacturing	8.8	8.4	8.3	8.3	8.1	7.9	7.8	7.8	7.8	8.6	9.0
Electricity, gas	2.1	2.2	2.0	1.9	1.8	1.7	1.5	1.6	1.7	1.7	1.8
Water supply	0.5	0.5	0.5	0.4	0.4	0.4	0.4	0.4	0.4	0.4	0.4
Construction	5.2	5.2	6.8	8.0	7.9	7.8	7.8	7.8	7.7	7.9	8.0
Services	45.3	45.5	44.2	42.7	42.0	42.5	43.3	43.3	43.8	43.6	43.9
Trade and repairs	12.8	13.0	12.4	12.0	11.4	11.0	11.4	11.5	11.6	11.8	12.1
Hotels and restaurants	2.8	2.8	2.6	2.4	2.3	2.5	2.6	2.7	2.6	2.3	2.3
Transport	5.5	5.4	5.0	4.8	4.6	4.4	4.3	4.2	4.2	5.0	5.1
Communications	1.2	1.2	1.2	1.3	1.5	1.7	2.1	2.3	2.5	2.1	2.1
Financial intermediation	1.6	1.5	1.7	1.7	1.6	1.7	1.7	1.6	1.6	1.7	1.8
Real estate and business services	10.7	10.3	9.7	9.4	9.1	9.5	9.6	9.5	9.6	9.0	8.8
Public administration	6.6	7.0	7.2	7.2	7.7	8.0	8.0	7.9	8.2	8.1	8.0
Education	2.1	2.1	2.0	1.8	1.7	1.6	1.5	1.4	1.3	1.4	1.4
Health	1.2	1.3	1.5	1.4	1.4	1.5	1.5	1.6	1.5	1.6	1.6
Other social and personal services	0.9	0.9	0.8	0.7	0.7	0.7	0.7	0.6	0.6	0.6	0.6
Gross value added before adjustments	94.6	94.2	94.1	94.0	93.7	92.3	91.7	91.6	91.6	91.6	91.8
<i>less</i> FISIM	-1.0	-0.9	-0.9	-0.9	-0.9	-0.9	-0.9	-1.0	-1.0	-1.2	-1.1
Gross value added at current basic prices	93.5	93.3	93.3	93.1	92.8	91.4	90.7	90.7	90.6	90.4	90.7
<i>add</i> Taxes on products	6.5	6.7	6.7	6.9	7.2	8.6	9.3	9.3	9.4	9.6	9.3
Gross Domestic Product at current market prices	100.0	100.0	100.0	100.0	100.0	100.0	100.0	100.0	100.0	100.0	100.0

Table 4a: Annual Growth Rates of Gross Domestic Product by Economic Activity

Economic Activity	Percentage										
	2000	2001	2002	2003	2004	2005	2006	2007	2008	2009r	2010p
Agriculture, Hunting and Forestry	4.5	4.9	4.9	3.1	5.9	4.3	3.8	4.0	4.6	3.2	4.2
Crops	4.7	5.3	5.6	3.2	6.6	4.4	4.0	4.5	5.1	3.4	4.4
Livestock	3.9	4.0	2.8	2.2	4.1	4.4	2.4	2.4	2.6	2.3	3.4
Forestry and hunting	4.8	3.6	3.3	3.0	2.7	3.6	4.6	2.9	3.4	3.5	4.1
Fishing	2.9	4.8	6.8	6.0	6.7	6.0	5.0	4.5	5.0	2.7	1.5
Industry and construction	4.5	6.6	9.4	10.9	10.9	10.4	8.5	9.5	8.6	7.0	8.2
Mining and quarrying	14.3	13.9	16.9	17.1	16.0	16.1	15.6	10.7	2.5	1.2	2.7
Manufacturing	4.8	5.0	7.5	9.0	9.4	9.6	8.5	8.7	9.9	8.0	7.9
Electricity, gas	6.2	5.9	6.2	7.2	7.5	9.4	-1.9	10.9	5.4	8.4	10.2
Water supply	3.4	3.5	2.8	4.5	5.2	4.3	6.2	6.5	6.6	5.6	6.3
Construction	0.8	7.6	11.9	13.8	13.0	10.1	9.5	9.7	10.5	7.5	10.2
Services	5.4	6.4	7.7	7.8	7.8	8.0	7.8	8.1	8.5	7.2	8.2
Trade and repairs	4.3	6.4	8.3	9.7	5.8	6.7	9.5	9.8	10.0	7.5	8.2
Hotels and restaurants	4.1	4.8	6.4	3.2	3.6	5.6	4.3	4.4	4.5	4.4	6.1
Transport	4.3	4.9	5.9	5.0	8.6	6.7	5.3	6.5	6.9	6.0	7.0
Communications	5.6	8.7	10.4	15.6	17.4	18.8	19.2	20.1	20.5	21.9	22.1
Financial intermediation	3.9	6.9	10.1	10.7	8.3	10.8	11.4	10.2	11.9	9.0	10.1
Real estate and business services	4.9	4.2	7.1	6.5	6.8	7.5	7.3	7.0	7.1	6.8	7.0
Public administration	10.7	10.5	9.2	9.6	13.6	11.4	6.5	6.7	7.0	4.4	6.5
Education	4.0	11.4	7.0	2.8	4.0	4.0	5.0	5.5	6.9	7.1	7.3
Health	5.1	5.6	8.6	8.7	7.8	8.1	8.5	8.8	9.0	6.7	6.9
Other social and personal services	3.1	3.1	2.1	2.0	3.0	2.6	3.7	3.2	3.1	3.2	3.5
Gross value added before adjustments	4.9	6.0	7.2	6.9	7.8	7.4	6.8	7.3	7.5	6.1	7.1
<i>less FISIM</i>	1.4	2.5	8.7	11.7	10.1	11.8	14.9	15.3	11.0	8.7	9.1
Gross value added at constant 2001 basic prices	4.9	6.0	7.2	6.9	7.8	7.4	6.7	7.2	7.4	6.0	7.1
<i>Add Taxes on products</i>	4.9	6.0	7.2	6.9	7.8	7.4	6.8	6.9	7.8	5.8	6.7
Gross Domestic Product at constant 2001 market prices	4.9	6.0	7.2	6.9	7.8	7.4	6.7	7.1	7.4	6.0	7.0

Table 5: Implicit Deflators of Gross Domestic Product by Economic Activities (2001 = 100)

Economic Activity	2000	2001	2002	2003	2004	2005	2006	2007	2008	2009r	2010p
Agriculture Hunting and Forestry	95.8	100.0	108.0	122.1	136.4	140.1	144.1	159.2	179.3	189.3	203.5
Crops	96.0	100.0	108.8	124.5	138.0	138.5	140.5	155.1	174.2	185.9	197.6
Livestock	94.0	100.0	106.4	116.6	133.0	150.8	161.4	180.1	207.1	196.5	207.5
Forestry and Hunting	98.3	100.0	104.6	111.9	128.6	132.6	142.0	156.0	173.5	206.8	250.3
Fishing	99.1	100.0	105.4	107.9	111.6	114.7	116.9	128.5	130.9	171.8	194.7
Industry and construction	95.1	100.0	114.5	127.7	131.5	136.3	141.1	153.4	165.5	184.5	198.9
Mining & quarrying	84.9	100.0	117.6	131.6	140.7	155.1	169.0	196.8	216.9	240.3	266.7
Manufacturing	98.5	100.0	105.7	112.3	115.6	118.5	120.1	128.7	139.4	162.4	179.2
Electricity, gas	91.6	100.0	100.3	101.4	101.8	103.3	107.2	117.2	139.5	146.6	158.3
Water supply	87.9	100.0	107.9	114.4	124.0	132.7	138.1	145.3	149.7	158.4	162.5
Construction	95.0	100.0	133.0	159.7	161.8	166.1	169.9	181.7	190.7	208.1	217.2
Services	95.0	100.0	103.5	107.7	113.3	121.3	128.8	139.1	153.1	162.0	172.7
Trade & repairs	94.2	100.0	101.3	103.5	107.2	110.5	117.7	126.7	137.1	148.2	160.2
Hotels & restaurants	93.9	100.0	100.7	104.0	111.8	130.7	145.9	170.2	188.9	177.1	198.1
Transport	96.3	100.0	102.1	106.7	108.4	112.5	116.5	126.0	137.9	176.7	192.9
Communications	93.7	100.0	104.8	112.2	122.3	138.0	156.2	169.3	176.4	141.1	134.0
Financial intermediation	97.2	100.0	116.6	120.0	124.1	129.6	131.5	137.3	143.6	155.9	168.3
Real estate & business services	96.6	100.0	100.5	106.2	111.3	123.9	131.0	140.8	157.7	157.3	165.3
Public administration	93.1	100.0	107.9	113.1	123.5	131.7	139.4	149.8	171.7	185.2	196.5
Education	99.7	100.0	104.6	107.6	109.7	111.8	113.9	116.4	125.3	137.9	149.1
Health	86.5	100.0	117.6	124.5	132.7	142.5	155.3	169.6	182.1	202.5	221.8
Other social & personal services	95.0	100.0	104.3	104.5	113.6	119.8	126.0	134.9	148.7	173.1	191.5
Gross value added excluding adjustments	95.3	100.0	107.0	115.9	123.6	129.6	135.4	147.3	162.2	173.9	186.4
<i>FISIM</i>	109.0	100.0	103.9	108.5	112.8	118.6	123.6	131.6	148.0	172.0	171.8
Gross value added at basic prices	95.2	100.0	107.1	116.0	123.7	129.7	135.5	147.5	162.4	174.0	186.6
<i>Taxes on products</i>	91.6	100.0	107.4	118.6	132.1	168.3	191.6	211.1	233.0	255.5	265.5
Gross domestic product at market prices	95.0	100.0	107.1	116.1	124.3	132.3	139.3	151.8	167.1	179.5	191.9

Table 6: Gross Domestic Product at 2001 Prices by Economic Activity

Economic Activity	TShs million										
	2000	2001	2002	2003	2004	2005	2006	2007	2008	2009r	2010p
Agriculture, Hunting and Forestry	2,512,170	2,636,193	2,766,479	2,850,956	3,017,988	3,148,384	3,268,238	3,399,648	3,554,488	3,669,646	3,824,428
Crops	1,847,572	1,945,945	2,055,634	2,122,361	2,262,725	2,361,930	2,457,373	2,567,955	2,698,921	2,790,684	2,913,474
Livestock	441,860	459,448	472,500	483,001	503,000	525,109	537,498	550,398	564,708	577,922	597,572
Forestry and hunting	222,738	230,800	238,345	245,594	252,263	261,345	273,367	281,295	290,859	301,039	313,382
Fishing	146,675	153,660	164,049	173,892	185,543	196,676	206,510	215,734	226,521	232,637	236,126
Industry and construction	1,536,952	1,638,459	1,792,024	1,988,081	2,204,619	2,433,261	2,639,902	2,889,519	3,138,241	3,357,703	3,633,664
Mining and quarrying	140,400	159,979	187,000	219,000	254,000	295,000	341,000	377,559	386,998	391,642	402,331
Manufacturing	726,358	762,400	819,200	893,000	977,000	1,071,000	1,162,000	1,263,435	1,388,515	1,499,596	1,618,064
Electricity, gas	185,847	196,860	209,000	223,953	240,708	263,218	258,347	286,507	301,978	327,344	360,733
Water supply	42,363	43,840	45,084	47,128	49,557	51,700	54,905	58,474	62,333	65,824	69,955
Construction	441,984	475,380	531,740	605,000	683,354	752,343	823,650	903,544	998,416	1,073,297	1,182,581
Services	3,890,050	4,139,962	4,460,699	4,806,587	5,182,094	5,596,784	6,035,932	6,527,561	7,085,136	7,594,661	8,214,209
Trade and repairs	1,111,165	1,182,797	1,281,544	1,405,698	1,486,931	1,585,906	1,736,631	1,906,821	2,097,503	2,254,816	2,439,711
Hotels and restaurants	239,528	250,978	267,162	275,836	285,732	301,873	314,921	328,859	343,658	358,779	38,664
Transport	464,481	487,062	516,000	541,901	588,574	627,951	661,000	703,965	752,539	797,691	853,529
Communications	103,716	112,783	124,549	144,039	169,158	200,900	239,537	287,684	346,659	422,577	515,967
Financial intermediation	131,000	140,000	154,108	170,643	184,775	204,694	228,000	251,280	281,120	306,339	337,356
Real estate and business services	898,961	936,440	1,003,260	1,068,732	1,141,014	1,226,790	1,316,000	1,408,120	1,508,097	1,610,647	1,723,392
Public administration	580,000	640,649	699,561	766,760	871,169	970,786	1,033,488	1,102,951	1,180,158	1,232,313	1,312,414
Education	169,462	188,733	202,000	207,606	215,910	224,547	235,774	248,742	265,905	284,704	305,402
Health	112,629	118,972	129,229	140,437	151,370	163,572	177,520	193,142	210,525	224,654	240,058
Other social and personal services	79,108	81,548	83,286	84,935	87,461	89,765	93,061	95,998	98,974	102,141	105,716
Gross value added before adjustments	8,085,847	8,568,274	9,183,251	9,819,516	10,590,244	11,375,105	12,150,582	13,032,462	14,004,385	14,854,646	15,908,427
less FISIM	-78,049	-80,000	-87,000	-97,154	-106,931	-119,497	-137,287	-158,292	-175,704	-190,990	-208,370
Gross value added at constant 2001 basic prices	8,007,798	8,488,274	9,096,251	9,722,362	10,483,313	11,255,608	12,013,295	12,874,170	13,828,681	14,663,656	15,700,057
Add Taxes on products	577,542	612,000	655,926	701,372	756,422	812,482	867,868	927,751	999,664	1,057,645	1,128,57
Gross Domestic Product at constant 2001 market prices	8,585,340	9,100,274	9,752,177	10,423,734	11,239,735	12,068,090	12,881,163	13,801,921	14,828,345	15,721,301	16,828,563

Table 7: Shares of Gross Domestic Product at 2001 Prices by Economic Activity

Economic Activity	Percentage										
	2000	2001	2002	2003	2004	2005	2006	2007	2008	2009r	2010p
Agriculture, Hunting and Forestry	29.3	29.0	28.4	27.4	26.9	26.1	25.4	24.6	24.0	23.3	22.7
Crops	21.5	21.4	21.1	20.4	20.1	19.6	19.1	18.6	18.2	17.8	17.3
Livestock	5.1	5.0	4.8	4.6	4.5	4.4	4.2	4.0	3.8	3.7	3.6
Forestry and hunting	2.6	2.5	2.4	2.4	2.2	2.2	2.1	2.0	2.0	1.9	1.9
Fishing	1.7	1.7	1.7	1.7	1.7	1.6	1.6	1.6	1.5	1.5	1.4
Industry and construction	17.9	18.0	18.4	19.1	19.6	20.2	20.5	20.9	21.2	21.4	21.6
Mining and quarrying	1.6	1.8	1.9	2.1	2.3	2.4	2.6	2.7	2.6	2.5	2.4
Manufacturing	8.5	8.4	8.4	8.6	8.7	8.9	9.0	9.2	9.4	9.5	9.6
Electricity, gas	2.2	2.2	2.1	2.1	2.1	2.2	2.0	2.1	2.0	2.1	2.1
Water supply	0.5	0.5	0.5	0.5	0.4	0.4	0.4	0.4	0.4	0.4	0.4
Construction	5.1	5.2	5.5	5.8	6.1	6.2	6.4	6.5	6.7	6.8	7.0
Services	45.3	45.5	45.7	46.1	46.1	46.4	46.9	47.3	47.8	48.3	48.8
Trade and repairs	12.9	13.0	13.1	13.5	13.2	13.1	13.5	13.8	14.1	14.3	14.5
Hotels and restaurants	2.8	2.8	2.7	2.6	2.5	2.5	2.4	2.4	2.3	2.3	2.3
Transport	5.4	5.4	5.3	5.2	5.2	5.2	5.1	5.1	5.1	5.1	5.1
Communications	1.2	1.2	1.3	1.4	1.5	1.7	1.9	2.1	2.3	2.7	3.1
Financial intermediation	1.5	1.5	1.6	1.6	1.6	1.7	1.8	1.8	1.9	1.9	2.0
Real estate and business services	10.5	10.3	10.3	10.3	10.2	10.2	10.2	10.2	10.2	10.2	10.2
Public administration	6.8	7.0	7.2	7.4	7.8	8.0	8.0	8.0	8.0	7.8	7.8
Education	2.0	2.1	2.1	2.0	1.9	1.9	1.8	1.8	1.8	1.8	1.8
Health	1.3	1.3	1.3	1.3	1.3	1.4	1.4	1.4	1.4	1.4	1.4
Other social and personal services	0.9	0.9	0.9	0.8	0.8	0.7	0.7	0.7	0.7	0.6	0.6
Gross value added before adjustments	94.2	94.2	94.2	94.2	94.2	94.3	94.3	94.4	94.4	94.5	94.2
<i>less FISIM</i>	-0.9	-0.9	-0.9	-0.9	-1.0	-1.0	-1.1	-1.1	-1.2	-1.2	-0.9
Gross value added at constant 2001 basic prices	93.3	93.3	93.3	93.3	93.3	93.3	93.3	93.3	93.3	93.3	93.3
<i>Add Taxes on products</i>	6.7	6.7	6.7	6.7	6.7	6.7	6.7	6.7	6.7	6.7	6.7
Gross Domestic Product at constant 2001 market prices	100.0	100.0	100.0	100.0	100.0	100.0	100.0	100.0	100.0	100.0	100.0

Table 8: Gross Domestic Product of Agriculture and Fishing at Current Prices

Economic activity	TShs. million										
	2000	2001	2002	2003	2004	2005	2006	2007	2008	2009r	2010p
Agriculture	2,407,300	2,636,193	2,988,383	3,479,646	4,116,444	4,410,478	4,708,556	5,413,257	6,374,476	6,945,213	7,782,138
Crops	1,772,952	1,945,945	2,236,209	2,641,586	3,122,896	3,272,143	3,452,690	3,983,327	4,700,326	5,187,080	5,757,659
Livestock	415,348	459,448	502,800	563,136	669,021	791,823	867,772	990,996	1,169,375	1,135,527	1,239,996
Forestry and Hunting	219,000	230,800	249,374	274,924	324,527	346,512	388,094	438,934	504,774	622,606	784,484
Fishing	145,297	153,660	172,989	187,693	207,025	225,658	241,454	277,189	296,592	399,715	459,673
Total Agriculture and Fishing	2,552,597	2,789,853	3,161,372	3,667,339	4,323,469	4,636,136	4,950,010	5,690,446	6,671,068	7,344,928	8,241,811

Table 9: Gross Domestic Product of Agriculture and Fishing at 2001 Prices

Economic activity	TShs. million										
	2000	2001	2002	2003	2004	2005	2006	2007	2008	2009r	2010p
Agriculture	2,512,170	2,636,193	2,766,479	2,850,956	3,017,988	3,148,384	3,268,238	3,399,648	3,554,488	3,669,646	3,824,428
Crops	1,847,572	1,945,945	2,055,634	2,122,361	2,262,725	2,361,930	2,457,373	2,567,955	2,698,921	2,790,684	2,913,474
Livestock	441,860	459,448	472,500	483,001	503,000	525,109	537,498	550,398	564,708	577,922	597,572
Forestry and Hunting	222,738	230,800	238,345	245,594	252,263	261,345	273,367	281,295	290,859	301,039	313,382
Fishing	146,675	153,660	164,049	173,892	185,543	196,676	206,510	215,734	226,521	232,637	236,126
Total Agriculture and Fishing	2,658,845	2,789,853	2,930,528	3,024,848	3,203,531	3,345,060	3,474,748	3,615,382	3,781,009	3,902,282	4,060,554

Table 10: Gross Domestic Product of Industry & Construction at Current Prices

Economic activity	TShs. million										
	2000	2001	2002	2003	2004	2005	2006	2007	2008	2009r	2010p
1.Mining and Quarrying	119,175	159,979	220,000	288,200	357,368	457,431	576,363	742,932	839,513	941,094	1,072,847
2.Manufacturing	715,649	762,400	866,228	1,002,827	1,129,558	1,269,145	1,395,282	1,625,504	1,935,975	2,434,754	2,899,094
3.Electricity,gas	170,220	196,860	209,640	227,081	244,977	271,925	276,915	335,898	421,216	479,768	571,130
4.Water Supply	37,233	43,840	48,666	53,925	61,474	68,605	75,809	84,982	93,310	104,263	113,691
5.Construction	420,000	475,380	707,025	966,452	1,105,886	1,249,651	1,399,609	1,641,741	1,904,420	2,233,885	2,568,968
Total Industry and Construction	1,462,277	1,638,459	2,051,559	2,538,485	2,899,263	3,316,757	3,723,978	4,431,057	5,194,434	6,193,765	7,225,731

Table 11: Gross Domestic Product of Industry & Construction at 2001 Prices

Economic activity	TShs. million										
	2000	2001	2002	2003	2004	2005	2006	2007	2008	2009r	2010p
1. Mining and quarrying	140,400	159,979	187,000	219,000	254,000	295,000	341,000	377,559	386,998	391,642	402,331
2. Manufacturing	726,358	762,400	819,200	893,000	977,000	1,071,000	1,162,000	1,263,435	1,388,515	1,499,596	1,618,064
3. Electricity, gas	185,847	196,860	209,000	223,953	240,708	263,218	258,347	286,507	301,978	327,344	360,733
4. Water supply	42,363	43,840	45,084	47,128	49,557	51,700	54,905	58,474	62,333	65,824	69,955
5. Construction	441,984	475,380	531,740	605,000	683,354	752,343	823,650	903,544	998,416	1,073,297	1,182,581
Total Industry and Construction	1,536,952	1,638,459	1,792,024	1,988,081	2,204,619	2,433,261	2,639,902	2,889,519	3,138,241	3,357,703	3,633,664

Table 12: Gross Domestic Product of Services at Current Prices

Economic activity	TShs. million										
	2000	2001	2002	2003	2004	2005	2006	2007	2008	2009r	2010p
1. Trade and repairs	1,046,788	1,182,797	1,298,349	1,454,527	1,593,717	1,752,826	2,044,421	2,416,506	2,875,642	3,341,496	3,909,550
2. Hotels and restaurants	225,000	250,978	269,120	286,883	319,365	394,417	459,584	559,722	649,278	635,414	754,037
3. Transport	447,314	487,062	526,710	577,977	637,720	706,291	769,830	886,844	1,037,608	1,409,636	1,646,704
4. Communications	97,143	112,783	130,496	161,623	206,877	277,216	374,241	487,132	611,350	596,230	691,627
5. Financial intermediation	127,297	140,000	179,715	204,766	229,370	265,261	299,734	345,000	403,727	477,492	567,822
6. Real estate and business services	868,503	936,440	1,008,809	1,135,252	1,270,108	1,520,109	1,723,571	1,982,107	2,378,528	2,532,770	2,848,855
7. Public administration	540,229	640,649	754,654	866,917	1,076,215	1,278,881	1,440,913	1,652,556	1,999,593	2,282,763	2,579,522
8. Education	169,000	188,733	211,372	223,409	236,813	251,022	268,594	289,617	333,060	392,507	455,308
9. Health	97,373	118,972	151,993	174,789	200,933	233,032	275,726	327,658	383,360	454,990	532,339
10. Other social and personal services	75,153	81,548	86,904	88,770	99,329	107,542	117,284	129,482	147,221	176,775	202,422
Total Services	3,693,800	4,139,962	4,617,402	5,174,913	5,870,447	6,786,597	7,773,898	9,076,622	10,819,365	12,300,072	14,188,185

Table 13: Gross Domestic Product of Services at 2001 Prices

Economic activity	TShs. million										
	2000	2001	2002	2003	2004	2005	2006	2007	2008	2009r	2010p
1. Trade and repairs	1,111,165	1,182,797	1,281,544	1,405,698	1,486,931	1,585,906	1,736,631	1,906,821	2,097,503	2,254,816	2,439,711
2. Hotels and restaurants	239,528	250,978	267,162	275,836	285,732	301,873	314,921	328,859	343,658	358,779	380,664
3. Transport	464,481	487,062	516,000	541,901	588,574	627,951	661,000	703,965	752,539	797,691	853,529
4. Communications	103,716	112,783	124,549	144,039	169,158	200,900	239,537	287,684	346,659	422,577	515,967
5. Financial intermediation	131,000	140,000	154,108	170,643	184,775	204,694	228,000	251,280	281,120	306,339	337,356
6. Real estate and business services	898,961	936,440	1,003,260	1,068,732	1,141,014	1,226,790	1,316,000	1,408,120	1,508,097	1,610,647	1,723,392
7. Public administration	580,000	640,649	699,561	766,760	871,169	970,786	1,033,488	1,102,951	1,180,158	1,232,313	1,312,414
8. Education	169,462	188,733	202,000	207,606	215,910	224,547	235,774	248,742	265,905	284,704	305,402
9. Health	112,629	118,972	129,229	140,437	151,370	163,572	177,520	193,142	210,525	224,654	240,058
10. Other social and personal services	79,108	81,548	83,286	84,935	87,461	89,765	93,061	95,998	98,974	102,141	105,716
Total Services	3,890,050	4,139,962	4,460,699	4,806,587	5,182,094	5,596,784	6,035,932	6,527,561	7,085,136	7,594,661	8,214,209

VII. EXPENDITURE ON GROSS DOMESTIC PRODUCT

Generally, there are three approaches in computing the GDP whereby expenditure on GDP is one of them. In this approach, GDP is derived as the sum of all final uses of goods and services, measured at purchasers' prices, plus net exports. The components involved in estimating GDP by this approach are final consumption by households and government, gross fixed capital formation, changes in inventories, export and imports of goods and services.

The purpose of this approach is to show the conceptual inter relationship within the main consumption aggregates for three sectors namely, household, non-profit institutions serving households and general government in which final consumption takes place. This approach is used to counter-check consistency of the other two approaches.

Chart 2: Percentage Composition of Expenditure on GDP at Current Prices

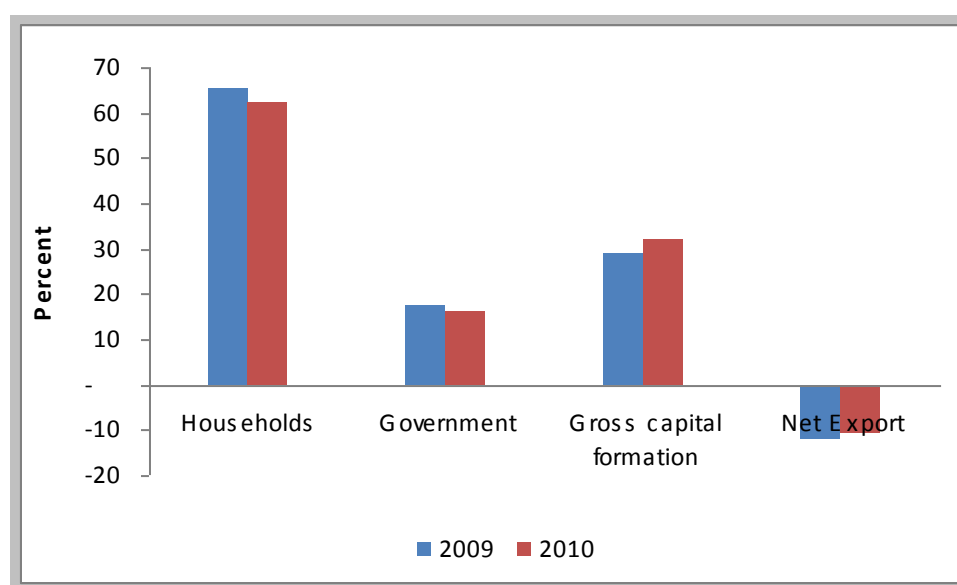


Table 14: Gross Domestic Product by Type of Expenditure at Current Market Prices

	TShs million										
Type of Expenditure	2000	2001	2002	2003	2004	2005	2006	2007	2008	2009r	2010p
GDP at market prices	8,157,789	9,100,274	10,444,508	12,107,061	13,971,593	15,965,296	17,941,268	20,948,403	24,781,679	28,212,646	32,293,479
Final consumption expenditure	7,333,064	7,901,761	8,885,098	10,300,882	11,714,438	13,386,429	15,340,093	18,270,124	20,781,786	23,403,570	25,417,627
Households	6,380,790	6,822,466	7,512,354	8,442,113	9,352,717	10,581,908	12,195,212	14,231,135	16,460,068	18,476,811	20,209,449
Government	952,274	1,079,295	1,372,744	1,858,769	2,361,721	2,804,521	3,144,881	4,038,989	4,321,718	4,926,759	5,208,178
Gross capital formation	1,370,938	1,587,743	1,795,412	2,320,538	3,153,367	4,001,088	4,957,782	6,209,741	7,381,257	8,173,221	10,342,536
Gross fixed capital formation	1,333,362	1,547,100	1,750,816	2,277,151	3,095,522	3,936,683	4,883,490	6,119,013	7,274,314	8,020,970	10,177,693
Changes in inventories	37,576	40,643	44,596	43,387	57,845	64,405	74,292	90,728	106,943	152,252	164,843
Exports of goods and services	1,089,613	1,547,644	1,836,223	2,247,385	2,745,596	3,324,425	4,047,990	5,078,248	6,230,729	6,553,198	8,988,306
Exports of goods fob	587,442	746,080	946,834	1,263,064	1,551,554	1,891,705	2,176,987	2,748,509	3,636,824	3,833,992	6,003,332
Exports of services	502,171	801,564	889,389	984,321	1,194,042	1,432,720	1,871,003	2,329,739	2,593,906	2,719,206	2,984,974
Imports of goods and services	-1,640,826	-1,936,874	-2,072,225	-2,761,744	-3,641,808	-4,746,646	-6,404,597	-8,609,710	-9,612,093	-9,917,343	-12,454,990
Imports of goods fob	-1,094,638	-1,367,474	-1,460,825	-2,008,052	-2,615,149	-3,383,801	-4,837,467	-6,606,784	-7,698,354	-7,622,953	-9,898,943
Imports of services	-546,188	-569,400	-611,400	-753,692	-1,026,659	-1,362,845	-1,567,130	-2,002,296	-1,913,739	-2,294,390	-2,556,047

Table 15: Gross Domestic Product by Type of Expenditure at Constant Market Prices

	TShs million										
Type of Expenditure	2000	2001	2002	2003	2004	2005	2006	2007	2008	2009r	2010p
GDP at constant market prices	8,585,339	9,100,274	9,752,178	10,423,735	11,239,734	12,068,090	12,881,163	13,801,921	14,828,345	15,721,301	16,828,563
Final consumption expenditure	7,630,259	7,901,761	8,486,320	9,052,080	9,748,544	10,855,260	11,735,476	12,517,666	13,337,233	13,838,779	15,010,200
Households	6,615,765	6,822,466	7,213,608	7,410,284	7,866,521	8,748,590	9,456,059	10,021,704	10,512,581	10,870,070	11,538,082
Government	1,014,494	1,079,295	1,272,712	1,641,796	1,882,023	2,106,670	2,279,417	2,495,962	2,824,652	2,968,710	3,472,119
Gross capital formation	1,421,461	1,587,743	1,711,262	1,945,657	2,144,198	2,535,317	2,938,619	3,358,305	3,616,866	3,982,283	4,385,837
Gross fixed capital formation	1,381,486	1,547,100	1,669,823	1,903,295	2,100,914	2,493,633	2,893,604	3,313,177	3,571,629	3,928,805	4,332,960
Changes in inventories	39,975	40,643	41,439	42,362	43,284	41,684	45,015	45,128	45,237	53,478	52,877
Exports of goods and services	1,321,129	1,547,644	1,666,860	1,991,479	2,157,615	2,449,820	2,369,701	2,768,705	3,311,236	3,479,706	4,533,457
Exports of goods fob	596,796	746,080	814,494	1,049,683	1,120,049	1,256,370	1,004,797	1,089,513	1,441,642	1,519,800	2,401,333
Exports of services	724,333	801,564	852,366	941,796	1,037,566	1,193,450	1,364,904	1,679,192	1,869,594	1,959,906	2,132,124
Imports of goods and services	-1,787,510	-1,936,874	-2,112,264	-2,565,481	-2,810,623	-3,772,307	-4,162,633	-4,842,754	-5,436,991	-5,579,468	-7,100,931
Imports of goods fob	-1,157,440	-1,367,474	-1,489,051	-1,865,350	-2,018,283	-2,689,212	-3,146,854	-3,861,190	-4,499,134	-4,455,068	-5,822,908
Imports of services	-630,070	-569,400	-623,213	-700,131	-792,340	-1,083,095	-1,015,779	-981,564	-937,856	-1,124,400	-1,278,024

Table 16: Implicit Deflators of Gross Domestic Product by Type of Expenditure (2001 = 100)

Implied deflators	2000	2001	2002	2003	2004	2005	2006	2007	2008	2009r	2010p
Gross domestic product at market prices	95	100	107	116	124	132	139	152	167	179	192
Final consumption expenditure	96	100	105	114	120	123	131	146	156	169	169
Households	96	100	104	114	119	121	129	142	157	170	175
Government	94	100	108	113	125	133	138	162	153	166	150
Gross capital formation	96	100	105	119	147	158	169	185	204	205	236
Gross fixed capital formation	97	100	105	120	147	158	169	185	204	204	235
Changes in inventories	94	100	108	102	134	155	165	201	236	285	312
Exports of goods and services	82	100	110	113	127	136	171	183	188	188	198
Exports of goods fob	98	100	116	120	139	151	217	252	252	252	250
Exports of services	69	100	104	105	115	120	137	139	139	139	140
Imports of goods and services	92	100	98	108	130	126	154	178	177	178	175
Imports of goods fob	95	100	98	108	130	126	154	171	171	171	170
Imports of services	87	100	98	108	130	126	154	204	204	204	200

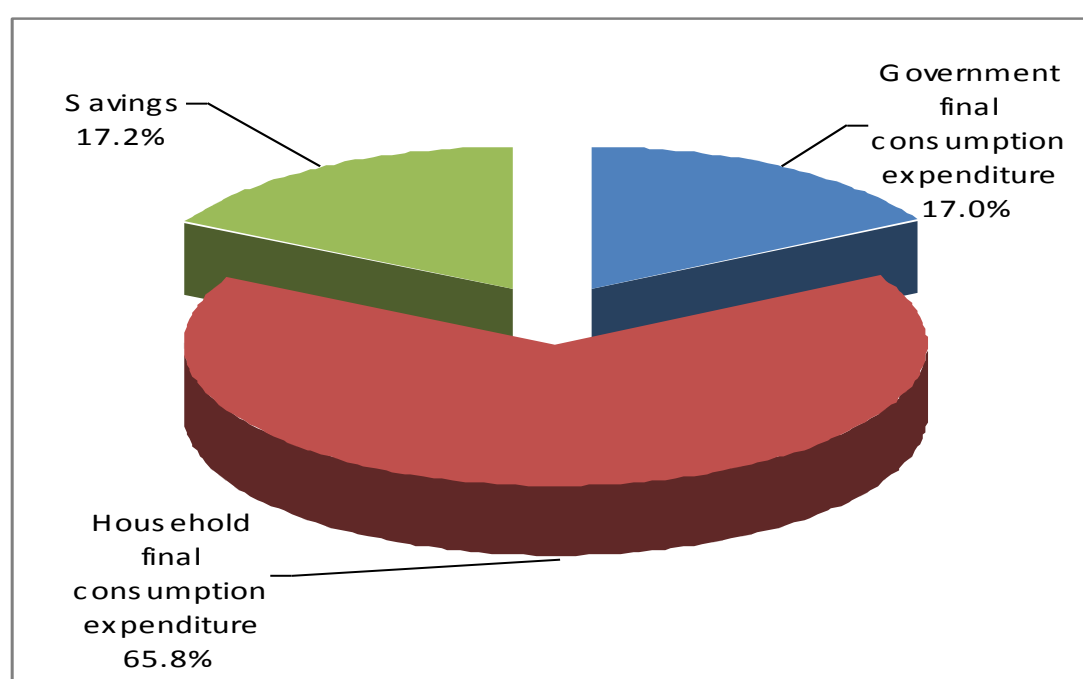
VIII. DISPOSABLE INCOME

Disposable Income is the sum of all current transfers except social transfers in kind receivable less all current transfers payable.

National Disposable Income is a sum of all current transfers in cash or in kind receivable by resident institutional units from non-resident units less all current transfers in cash or in kind payable by resident institutional units to non resident units.

Net National Disposable Income can be derived from net national income. Alternatively, net national disposable income can be derived by summing up final consumption expenditure by household, government and net national savings.

Chart 3: Composition of Net National Disposable Income at Current Market Prices, 2010



In 2010, net National Disposable Income at current market price increased to TShs. **30,712,702** million from TShs. **26,547,434** million in 2009, equivalent to an increase of about 15.7 percent. The increase was attributed to a significant increase in final consumption expenditures by household and government.

Table 17: National Disposable Income and Its Appropriation at Current Market Prices

TShs million											
Heading	2000	2001	2002	2003	2004	2005	2006	2007	2008	2009r	2010p
1. Compensation of employees	1,340,440	1,440,278	1,555,625	1,680,075	1,814,481	1,959,639	2,190,876	2,504,171	3,443,235	3,601,624	3,781,706
2. Operating surplus	5,389,293	6,026,709	7,059,181	8,383,991	9,793,468	11,032,410	12,247,730	14,431,836	16,706,522	19,433,633	22,851,102
3. Net Domestic Product at basic prices	6,729,733	7,466,987	8,614,806	10,064,066	11,607,949	12,992,049	14,438,606	16,936,007	20,149,758	23,035,257	26,632,808
4. Net primary income from ROW	- 66,699	- 38,939	- 21,788	- 45,340	- 193,957	- 211,431	- 80,733	- 96,007	- 141,282	- 97,865	-101,111
5. Net National income at basic price.	6,663,034	7,428,048	8,593,018	10,018,726	11,413,992	12,780,618	14,357,873	16,840,000	20,008,476	22,937,392	26,531,679
6.Taxes on products	529,151	612,000	704,574	831,707	999,001	1,367,527	1,663,043	1,958,559	2,329,620	2,702,359	2,995,802
8. Net National Income at m.p.	7,192,185	8,040,048	9,297,592	10,850,433	12,412,993	14,148,145	16,020,916	18,798,559	22,338,096	25,639,751	29,527,499
9. Net current transfers from ROW	347,244	509,384	402,071	584,611	697,093	532,359	751,840	812,802	748,946	907,683	1,185,204
10.Net National Disposable Income at m.p	7,539,429	8,549,432	9,699,663	11,435,044	13,110,086	14,680,504	16,772,756	19,611,361	23,087,042	26,547,434	30,712,702
11.Government final consumption expenditure	952,274	1,079,295	1,372,744	1,858,769	2,361,721	2,804,521	3,144,881	4,038,989	4,321,718	4,926,759	5,208,178
12. Household final consumption expenditure	6,380,790	6,822,466	7,512,354	8,442,113	9,352,717	10,581,908	12,195,212	14,231,135	16,432,846	18,476,811	20,209,449
13. Savings	206,365	647,671	814,565	1,134,162	1,395,648	1,294,075	1,432,663	1,341,237	2,332,478	3,143,864	5,295,075
14. Net National Disposable Income at m.p.	7,539,429	8,549,432	9,699,663	11,435,044	13,110,086	14,680,504	16,772,756	19,611,361	23,087,042	26,547,434	30,712,702

NB: m.p.=>market prices.

Row =>Rest of the world

Table 18: Capital Finance at Current Prices

											TShs million
Heading	2000	2001	2002	2003	2004	2005	2006	2007	2008	2009r	2010p
1.Savings	206,365	647,671	814,565	1,134,162	1,395,648	1,294,075	1,432,663	1,341,237	2,332,478	3,143,864	5,295,075
2.Consumption on fixed capital	893,906	1,021,287	1,125,127	1,211,289	1,364,642	1,605,718	1,839,619	2,053,837	2,302,302	2,475,030	2,664,869
3.Net capital transfer from ROW	264,490	335,078	343,458	372,019	319,852	714,892	6,635,983	1,148,994	757,533	743,501	854,741
4. Finance of Gross accumulation	1,364,761	2,004,036	2,283,150	2,717,470	3,080,142	3,614,685	9,908,265	4,544,068	5,392,313	6,362,395	8,814,686
5. Changes in inventories	37,576	40,643	44,596	43,387	57,845	64,405	74,292	90,728	106,943	152,252	164,843
6.Gross fixed capital formation	1,333,362	,547,100	1,750,816	2,277,151	3,095,522	3,936,683	4,883,490	6,119,013	7,274,314	8,020,970	10,177,693
7.Net Lending(+)/Borrowing (-) from ROW	- 6,177	416,293	487,738	396,932	- 73,225	- 386,403	4,950,483	- 1,665,673	- 1,988,944	-1,810,826	-1,527,850
8. Gross Accumulation	1,364,761	2,004,036	2,283,150	2,717,470	3,080,142	3,614,685	9,908,265	4,544,068	5,392,313	6,362,395	8,814,686

Table 19: Relation Among National Accounting Aggregates at Current Basic Prices

TShs million											
Heading	2000	2001	2002	2003	2004	2005	2006	2007	2008	2009r	2010p
1. Gross Domestic Product at basic price.	7,623,639	8,488,274	9,739,933	11,275,355	12,972,591	14,597,767	16,278,225	18,989,844	22,452,059	25,510,287	29,297,677
2. Net primary income from ROW	- 66,699	- 38,939	- 21,788	- 45,340	- 193,957	- 211,431	- 80,733	- 96,007	- 141,282	- 97,865	-101,111
2.1 Primary Income receivable	48,059	71,925	65,570	90,725	88,631	91,323	100,755	109,815	145,481	205,070	234,011
2.2 Less Primary income payable	114,758	110,864	87,358	136,065	282,588	302,754	181,488	205,822	286,763	302,935	335,122
3. Equals: Gross National Product at b.p	7,556,940	8,449,335	9,718,145	11,230,015	12,778,634	14,386,336	16,197,492	18,893,837	22,310,777	25,412,422	29,196,566
4. Less: Consumption of Fixed Capital	893,906	1,021,287	1,125,127	1,211,289	1,364,642	1,605,718	1,839,619	2,053,837	2,302,302	2,475,030	2,664,869
5. Equals: Net National Product at basic price	6,663,034	7,428,048	8,593,018	10,018,726	11,413,992	12,780,618	14,357,873	16,840,000	20,008,476	22,937,392	26,531,697
6. Plus: Net Current Transfers from abroad	347,244	509,384	402,071	584,611	697,093	532,359	751,840	812,802	748,946	907,683	1,185,204
6.1 Current Transfers receivable	435,874	574,982	461,323	650,039	767,956	608,556	834,399	903,114	844,823	1,007,751	1,296,869
6.2 Less: Current transfer payable	88,630	65,598	59,252	65,428	70,863	76,196	82,559	90,312	95,877	100,068	111,665
7. Equals: Net National Disposable Income at b.p	7,010,278	7,937,432	8,995,089	10,603,337	12,111,085	13,312,977	15,109,713	17,652,802	20,757,422	23,845,075	27,716,901
8. Gross National Disposable Income at b.p	7,904,184	8,958,719	10,120,216	11,814,626	13,475,727	14,918,695	16,949,332	19,706,639	23,059,723	26,320,105	30,381,770
9. Gross National Income at basic prices	7,556,940	8,449,335	9,718,145	11,230,015	12,778,634	14,386,336	16,197,492	18,893,837	22,310,777	25,412,422	29,196,566

NB: b.p. =>basic price

Table 20: Relation Among National Accounting Aggregates at Current Market Prices

											TShs million
Heading	2000	2001	2002	2003	2004	2005	2006	2007	2008	2009r	2010p
1. Gross Domestic Product at m.p.	8,152,790	9,100,274	10,444,508	12,107,062	13,971,593	15,965,296	17,941,268	20,948,403	24,754,457	28,212,646	32,293,479
2. Plus: Net primary income from ROW	-66,699	-38,939	-21,788	-45,340	-193,957	-211,431	-80,733	-96,007	-141,282	-97,865	-101,111
3. Equals: Gross National Income at market price	8,086,091	9,061,335	10,422,720	12,061,722	13,777,636	15,753,865	17,860,535	20,852,396	24,613,175	28,114,781	32,192,368
4. Less: Consumption of Fixed Capital	893,906	1,021,287	1,125,127	1,211,289	1,364,642	1,605,718	1,839,619	2,053,837	2,302,302	2,475,030	2,664,869
5. Equals: Net National Income at market price	7,192,185	8,040,047	9,297,593	10,850,433	12,412,994	14,148,147	16,020,916	18,821,682	22,310,873	25,639,751	29,527,499
6. Plus: Net Current Transfers received from abroad	347,244	509,384	402,071	584,611	697,093	532,360	751,840	812,802	748,946	907,683	1,185,204
6.1 Current Transfers receivable	435,874	574,892	461,323	650,039	767,956	608,556	834,399	903,114	844,823	1,007,751	1,296,869
6.2 Less: Current transfer payable	88,630	65,598	59,252	65,428	70,863	76,196	82,559	90,312	95,877	100,068	111,665
7. Equals: Net National Disposable Income at market price	7,539,429	8,549,431	9,699,664	11,435,044	13,110,087	14,680,507	16,772,756	19,634,484	23,059,819	26,547,433	30,712,703

NB: Row =>Rest of the world

m.p = market prices

IX. EXTERNAL TRANSACTIONS

Current external balance is the balancing item in the Rest of the World Account (ROW). The account records all transactions between domestic economy and the rest of the world. Total external transaction receivable include export of goods and services, primary income and current transfers receivable while, external transaction payable comprises of imports of goods and services, primary income and current transfers payable. Therefore, the balance is the current external balance.

Primary Income

These are incomes that accrue to institutional units as a consequence of their involvement in the processes of production and ownership of assets that may be needed for the purposes of production.

Exports

Exported goods are valued f.o.b (free on board). This is a value in the market at the frontier of the exporting country, excluding the costs of transport and insurance.

Imports

Imported goods are valued c.i.f. (cost, insurance, freight) which is the value in the market at the frontier of the importing country, including transport charges and insurance.

Exports and Imports of Goods and Services

Exports and imports of goods and services consist of sales, barter, grants or gifts of goods and services from residents to non-residents. On Tanzania Mainland, the exports of goods comprise of traditional and non-traditional commodities while imported goods are classified as consumer, intermediate and capital goods. The share of imports to GDP at current market prices was 39.3 percent in 2010 as compared to 35.2 percent in 2009. However, the net export in 2010 amounted to negative 3,619,444 millions of Tanzania shillings as compared to negative TShs. 3,364,145 millions in 2009.

Chart 4: Percentage Shares of Export and Imports of Goods and Services to GDP at Current Market Prices

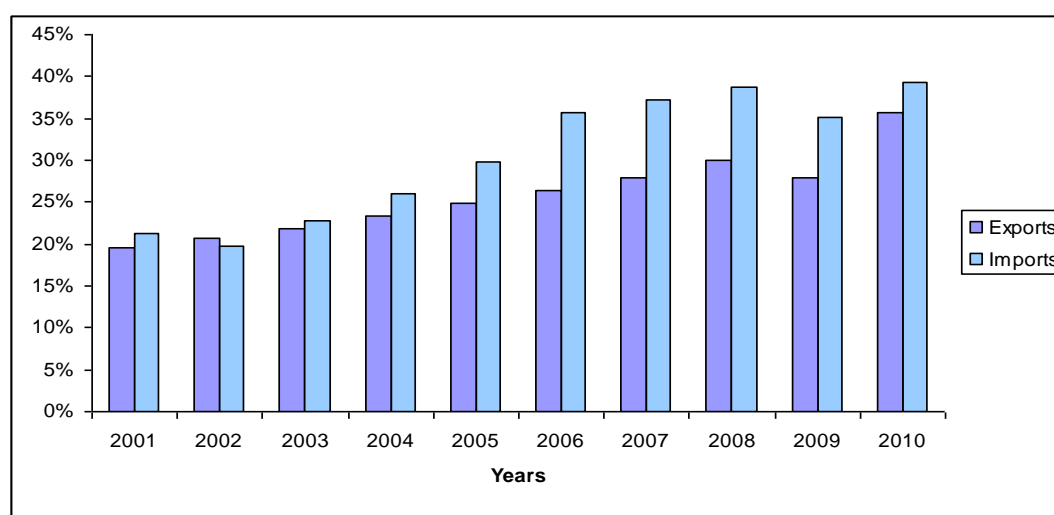


Table 21: International Transactions at Current Prices

TShs million											
Heading	2000	2001	2002	2003	2004	2005	2006	2007	2008	2009r	2010p
1. Export of goods and services:	1,064,773	1,547,643	1,836,223	2,247,385	2,745,597	3,324,424	4,047,990	5,095,773	6,230,730	6,553,198	9,057,473
1.1 Export of Goods	531,058	746,080	946,834	1,263,064	1,551,554	1,891,705	2,176,987	2,762,367	3,636,824	3,833,992	6,092,544
1.2 Export of services	533,715	801,564	889,389	984,321	1,194,042	1,432,720	1,871,003	2,333,406	2,593,906	2,719,206	2,964,929
2. Primary incomes receivable	48,059	71,925	65,570	90,725	88,631	91,323	100,755	109,815	145,481	205,070	234,011
3. Current transfers receivable	435,874	574,982	461,323	650,039	767,956	608,556	834,399	950,919	844,823	1,007,751	1,296,869
4. Total external transactions receivable by the Nation	1,548,706	2,194,550	2,363,116	2,988,149	3,602,183	4,024,303	4,983,144	6,156,507	7,221,034	7,766,019	10,588,353
5. Import of goods and services:	1,702,544	1,936,873	2,072,225	2,761,744	3,641,808	4,746,645	6,404,597	7,783,703	9,612,093	9,917,343	12,676,916
5.1 Import of goods	1,094,638	1,367,474	1,460,825	2,008,052	2,615,149	3,383,801	4,837,467	6,025,489	7,698,354	7,622,953	10,063,228
5.2 Import of services	607,906	569,400	611,400	753,692	1,026,659	1,362,845	1,567,130	1,758,214	1,913,739	2,294,390	2,613,688
6. Primary incomes payable	114,758	110,864	87,358	136,065	282,588	302,754	181,488	182,699	286,763	302,935	335,122
7. Current transfers payable	88,630	65,598	59,252	65,428	70,863	76,196	82,559	97,931	95,877	100,068	111,665
8. Current external balance	- 357,226	81,215	144,281	24,912	- 393,076	-1,101,293	- 1,685,500	- 1,907,826	- 2,773,699	- 2,554,327	-2,535,351
9. Total external transactions paid by the Nation	1,548,706	2,194,550	2,363,116	2,988,149	3,602,183	4,024,303	4,983,144	6,156,507	7,221,034	7,766,019	10,588,353
10. Current external balance	- 357,226	81,215	144,281	24,912	- 393,076	1,101,293	- 1,685,500	1,907,826	- 2,773,699	- 2,554,327	-2535,351
11.Errors and omissions	482,282	335,078	343,458	372,019	319,852	714,893	6,635,983	265,849	1,321,276	743,501	1,007,501
12. Net lending (+) or Borrowing (-) from the ROW	125,056	416,293	487,739	396,931	- 73,224	- 386,400	4,950,483	-1,641,977	-1,452,423	- 1,810,826	1,527,850

X. CAPITAL FORMATION

Gross Fixed Capital Formation (GFCF) is the total value of a producer's acquisition, less disposals of fixed assets during the accounting period plus certain additions to the value of non produced assets realized by the productive activity of institutional units. This includes tangible and non tangible (improved) assets. The National Accounts of Tanzania Mainland contain estimates of gross fixed capital formation by activity. The estimates are classified by ownership i.e. public and private sectors. GFCF by type of assets is reported under buildings, other works and equipments.

Gross Capital Formation at current prices increased to TShs. 10,342,536 million in 2010 from TShs. 8,173,221 million in 2009, equivalent to an increase of 26.5 percent. The increase was attributed to an increase in acquisition of equipment.

Chart 5: Gross Capital Formation at Current Prices by Public and Private Sector 2010

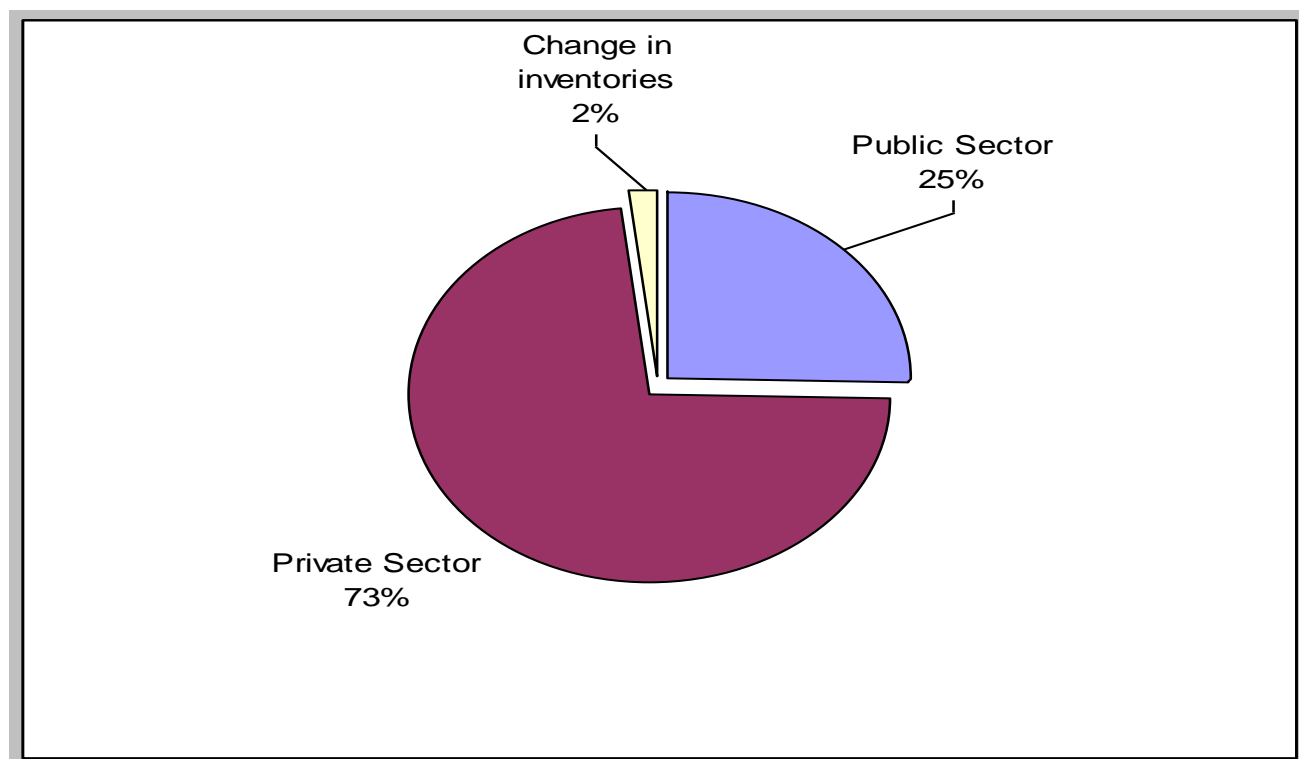


Table 22: Gross Capital Formation at Current Prices

TShs. million											
Type of Capital formation	2000	2001	2002	2003	2004	2005	2006	2007	2008	2009r	2010p
A. Gross Fixed Capital Formation	1,333,363	1,547,101	1,750,817	2,288,797	3,095,522	3,959,563	4,883,489	6,119,013	7,274,314	8,020,970	10,177,693
Building and works	896,120	980,101	1,156,929	1,598,236	2,249,203	2,883,296	3,152,974	3,828,841	4,550,645	5,459,438	6,553,111
1. Buildings:	660,467	693,422	703,009	1,032,053	1,440,216	1,849,109	2,011,176	2,467,985	2,940,930	3,538,708	4,260,122
1.1 Residential	136,893	145,210	150,406	173,687	266,443	349,977	390,219	484,652	581,583	709,531	865,628
1.2 Rural own-account	288,500	302,994	292,190	348,806	467,417	552,039	585,329	701,224	820,432	951,702	1,103,974
1.3 Non-residential	235,074	245,218	260,413	509,560	706,356	947,093	1,035,628	1,282,108	1,538,914	1,877,475	2,290,520
2. Other works:	235,653	286,679	453,920	566,183	808,987	1,034,187	1,141,798	1,360,856	1,609,716	1,920,729	2,292,989
2.1 Land improvement	10,969	17,013	74,044	42,408	110,434	119,416	125,256	137,170	149,515	182,409	222,539
2.2 Roads and Bridges	24,946	30,600	34,259	35,589	36,920	39,580	43,239	51,455	61,797	75,393	91,979
2.3 Water	103,114	117,056	223,668	400,163	479,828	629,842	701,791	827,411	984,619	1,153,974	1,352,457
2.4 Others	96,624	122,010	121,949	88,023	181,805	245,349	271,512	344,820	413,784	508,954	626,014
3. Equipment:	437,243	567,000	593,888	690,561	846,319	1,076,267	1,730,515	2,290,172	2,723,669	2,561,532	3,624,582
3.1 Transport equipment	145,094	166,000	219,771	252,439	293,604	410,919	629,648	817,913	956,958	972,933	1,613,525
3.2 Other equip. and Machinery	292,149	401,000	374,117	438,122	552,715	665,348	1,100,867	1,472,259	1,766,711	1,588,599	2,011,057
B. Changes in Inventories	37,576	40,643	44,596	43,387	57,845	64,405	74,292	90,728	106,943	152,252	164,843
C. Gross Capital Formation	1,370,939	1,587,744	1,795,413	2,332,184	3,153,367	4,023,968	4,957,781	6,209,741	7,381,257	8,173,221	10,342,536

Table 23: Gross Capital Formation by Public and Private Sectors at Current Prices

TShs. million											
Type of Capital formation	2000	2001	2002	2003	2004	2005	2006	2007	2008	2009r	2010p
A. Gross Fixed Capital Formation	1,333,363	1,547,100	1,750,817	2,288,796	3,095,522	3,959,563	4,883,489	6,119,013	7,274,314	8,020,970	10,177,693
1. Central Government	373,308	413,099	568,022	753,610	953,157	1,039,910	1,134,578	1,352,763	1,628,172	1,921,243	2,267,067
2. Parastatals	38,137	44,896	59,405	72,745	119,245	162,413	141,822	141,570	148,299	157,197	166,629
3. Institutions	50,049	55,642	72,900	89,624	120,042	138,362	141,822	144,659	152,971	163,067	173,830
4. Private	871,869	1,033,463	1,050,490	1,372,817	1,903,078	2,618,878	3,465,267	4,480,021	5,344,872	5,779,463	7,570,168
B. Changes in Inventories	37,576	40,643	44,596	43,387	57,845	64,405	74,292	90,728	106,943	152,252	164,843
C. Gross Capital Formation	1,370,939	1,587,743	1,795,413	2,332,183	3,153,367	4,023,968	4,957,781	6,209,741	7,381,257	8,173,221	10,342,536

Table 24: Gross Capital Formation at 2001 Prices

TShs. million											
Type of Capital formation	2000	2001	2002	2003	2004	2005	2006	2007	2008	2009r	2010p
A. Gross Fixed Capital Formation	1,381,486	1,547,100	1,669,823	1,903,295	2,100,914	2,493,633	2,893,605	3,313,177	3,571,629	3,928,805	4,332,960
Building and works	914,206	980,101	1,090,022	1,270,396	1,389,837	1,542,767	1,729,932	1,928,766	2,043,709	2,163,320	2,289,414
1. Buildings:	667,451	693,422	669,461	829,334	920,052	955,456	1,012,774	1,076,793	1,141,401	1,211,008	1,284,866
1.1 Residential	140,249	145,210	145,986	141,750	176,418	185,882	206,555	230,059	244,363	260,491	277,683
1.2 Rural own-account	290,086	302,994	270,713	271,724	283,345	295,766	314,832	321,112	339,078	357,405	376,705
1.3 Non-residential	237,116	245,218	252,762	415,860	460,289	473,808	491,387	525,622	557,960	593,111	630,477
2. Other works:	246,755	286,679	420,561	441,062	469,785	587,311	717,158	851,973	902,309	952,312	1,004,548
2.1 Land improvement	12,660	17,013	68,506	32,988	46,779	75,517	111,237	143,282	151,009	159,013	167,440
2.2 Roads and Bridges	25,449	30,600	32,277	28,289	22,813	21,178	23,724	26,018	27,666	25,875	23,234
2.3 Water	105,836	117,056	206,945	311,305	311,908	359,854	396,306	439,900	466,694	496,096	527,350
2.4 Others	102,810	122,010	112,833	68,480	88,285	130,762	185,891	242,773	256,940	271,329	286,523
3. Equipment:	467,280	567,000	579,800	642,156	711,078	963,108	1,163,673	1,384,410	1,527,920	1,765,485	2,043,546
3.1 Transport equipment	151,477	166,000	186,549	226,955	262,150	350,639	386,998	452,401	484,069	670,407	855,005
3.2 Other equip. and machinery	315,803	401,000	393,251	415,201	448,928	612,469	776,675	932,009	1,043,851	1,095,078	1,188,541
B. Changes in Inventories	39,975	40,643	41,439	42,362	43,284	41,684	45,015	45,128	45,237	53,478	52,877
C. Gross Capital Formation	1,421,461	1,587,743	1,711,262	1,945,657	2,144,199	2,535,317	2,938,620	3,358,305	3,616,866	3,982,283	4,385,837

Table 25: Gross Fixed Capital Formation by Kind of Economic Activity at Current Prices

Heading	TShs. million										
	2000	2001	2002	2003	2004	2005	2006	2007	2008	2009r	2010p
1. Agriculture and Fishing	37,519	42,194	46,249	60,460	73,364	87,431	96,298	106,076	112,692	110,602	178,907
2. Mining and Quarrying	125,062	154,710	185,770	242,853	303,811	383,229	459,891	539,225	568,839	542,924	877,964
3. Manufacturing	246,386	253,162	285,484	373,206	490,923	607,853	731,344	890,814	1,004,038	1,066,783	1,501,918
4. Electricity and Water Supply	181,852	182,839	196,797	257,268	323,677	394,622	479,308	584,836	693,529	755,603	946,588
5. Construction	375,187	478,195	554,227	724,526	1,068,134	1,453,583	1,905,744	2,525,162	3,113,697	3,616,680	4,299,863
6. Wholesale and Retail Trade and Hotels and Restaurants	6,327	14,065	15,713	20,542	24,442	29,103	35,645	43,795	48,628	52,104	56,077
7. Transport, Storage and Communication	300,150	323,485	359,381	469,809	640,424	809,187	959,695	1,188,269	1,475,376	1,620,715	2,009,673
8. Financial intermediation, Real Estate and B.S	26,322	28,129	30,786	40,246	48,362	53,911	58,816	63,854	67,358	65,502	71,489
9. Public Administration, Education, Health and O.S	34,559	70,323	76,409	99,888	122,385	140,645	156,748	176,981	190,158	190,056	235,213
10. Gross Fixed Capital Formation	1,333,363	1,547,100	1,750,817	2,288,796	3,095,522	3,959,563	4,883,489	6,119,013	7,274,314	8,020,970	10,177,693

Note: B.S >> Business Services

O.S >> Other Services

XI. REGIONAL GROSS DOMESTIC PRODUCT

The compilation of Regional National Accounts in Tanzania Mainland follows the procedures recommended in the SNA 1993. The administrative demarcated area called “a Region” is the economic territory for the purpose of compilation of Regional National Accounts.

Coverage

The Regional GDP estimates cover all goods and services produced in a region. The estimates also include goods and services imported to the region.

The Central Register of Establishments (CRE) provides a frame from which samples are drawn purposely for data collection in the regions. CRE is a directory (an index or list) of all operating establishments in Tanzania Mainland. The directory records all establishments engaging at least one worker on permanent basis.

Methodology

Regional Gross Domestic Product (RGDP) can either be compiled using the bottom up or top down approach. The bottom up approach makes use of the basic data by type of activities in the regions. In the top down approach, the total economy GDP is distributed to the regions using appropriate indicators by activity.

In Tanzania Mainland, the existing RGDP estimates are compiled using the top down approach; that is RGDP estimates at current prices are compiled from the National aggregates.

Importance:

The RGDP facilitates:

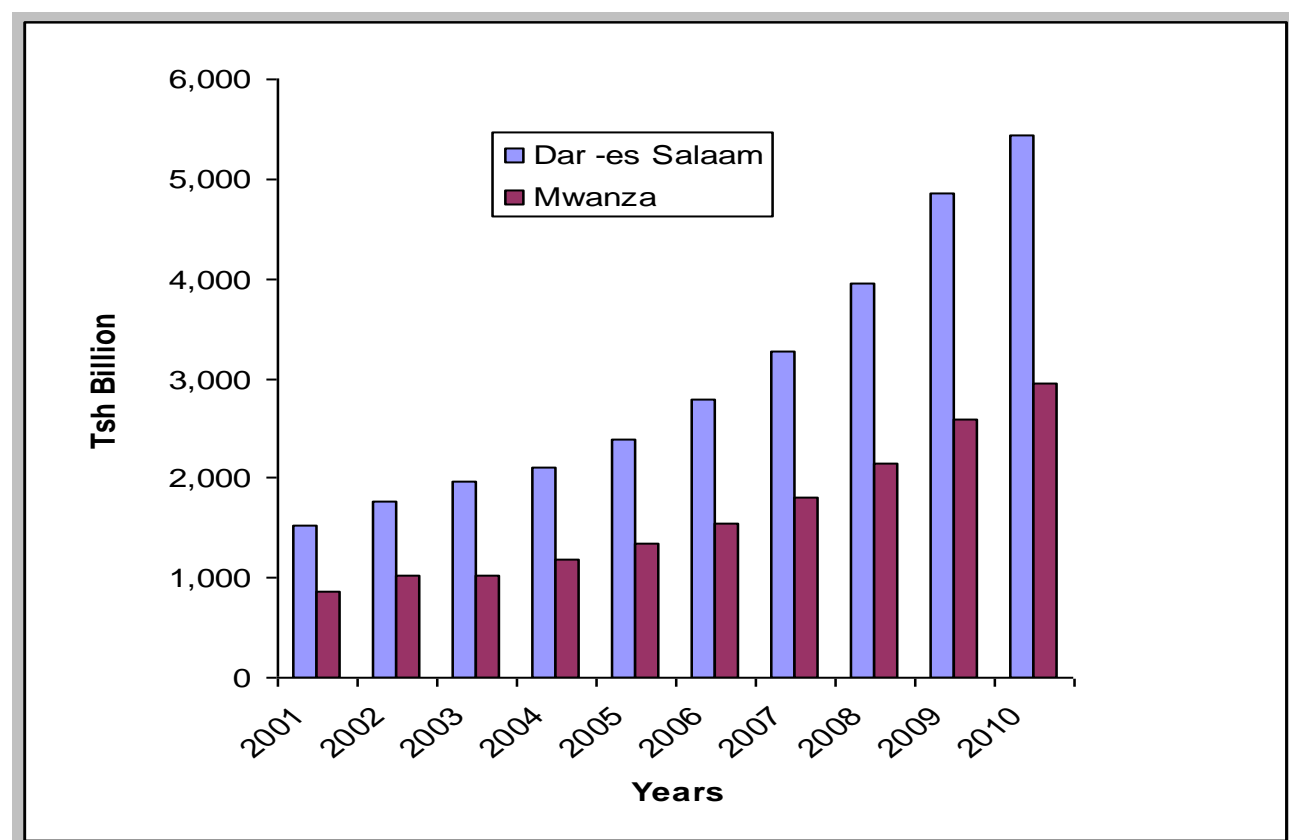
- (a) Monitoring and evaluation of the economic performance of the region;
- (b) Decision-making process in the region and formulation of economic policies;
- (c) Comparison of levels, shares and growth rates within regions in the country;
- (d) Updating the Regional Social Economic Profile.

Regions with the Largest Shares of GDP

For the past eight years, Dar es Salaam and Mwanza regions contributed significantly to the total GDP at current prices. From the year 2001 to 2010, the average contribution by the two regions was about 25.0 percent, of which, 16.2 percent was contributed by Dar es Salaam and 8.9 percent was contributed by Mwanza. The share of the two regions is attributed to the concentration of economic activities such as Manufacturing, Mining, Wholesale and Retail Trade, Hotels and Restaurants etc.

For the year 2010, the RGDP at current prices for Dar es Salaam Region amounted to TShs. 5,428,503 million compared to TShs. 4,848,914 million shillings recorded in the previous year, representing an increase of about 12.0 percent. The annual percentage change of RGDP between 2009 and 2010 for Mwanza Region was 14.1 percent.

Chart 6: Regional Gross Domestic Product for Dar es Salaam and Mwanza Regions at Current Prices.



Per Capita Gross Domestic Product

Per Capita Gross Domestic Product is obtained by dividing the Total Gross Domestic Product by the total population in a given year. It shows how much of the country's total income each person would get if this was distributed equally.

In the Tanzania Mainland economy, GDP per capita at current prices shows an increasing trend, ranging from TShs. 255,575 in 2000 to TShs.770, 464 in 2010. It increased by 11.1 percent in 2010 from 2009.

Chart 7: Per Capita Gross Domestic Product

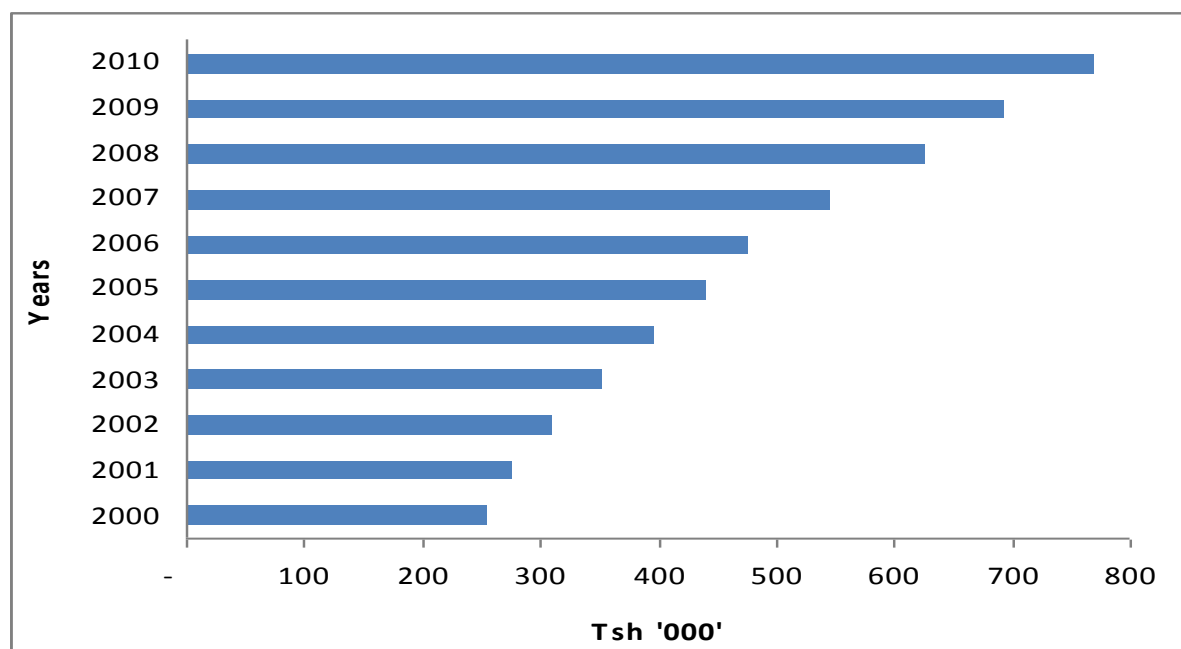


Table 26: Regional GDP at Current Prices

Region/Year	TShs. million										
	2000	2001	2002	2003	2004	2005	2006	2007	2008	2009r	2010p
Dodoma	275,052	315,330	364,847	400,784	434,003	479,968	547,234	631,518	756,184	853,502	1,024,651
Arusha	620,062	695,300	471,870	479,243	607,098	723,809	812,478	946,310	1,145,878	1,317,752	1,573,945
Kilimanjaro	333,917	370,834	422,938	527,106	659,640	781,706	863,125	986,560	1,184,812	1,299,446	1,438,637
Tanga	342,666	402,206	458,718	516,106	744,687	922,026	998,179	1,169,234	1,215,266	1,332,846	1,501,150
Morogoro	360,290	433,578	496,887	541,620	767,188	863,198	966,740	1,133,052	1,255,325	1,376,781	1,574,261
Pwani	171,096	185,014	208,972	279,342	290,324	310,330	349,136	396,021	464,536	509,481	608,288
Dar es Salaam	1,408,377	1,530,654	1,768,659	1,958,790	2,114,612	2,397,247	2,780,274	3,266,242	3,959,818	4,848,914	5,428,503
Lindi	175,079	189,550	214,095	282,766	294,206	314,782	353,982	405,926	474,128	520,001	621,676
Mtwara	310,031	353,941	400,552	359,936	374,581	399,623	450,012	507,235	608,814	667,718	927,074
Ruvuma	295,346	289,588	328,681	464,103	537,463	651,835	698,397	839,466	1,006,828	1,104,241	1,191,028
Iringa	437,360	506,779	583,569	669,390	748,910	867,482	953,806	1,123,318	1,340,065	1,469,720	1,702,430
Mbeya	450,348	522,867	602,095	716,689	944,876	1,135,574	1,257,978	1,499,285	1,779,610	2,065,488	2,376,978
Singida	235,748	241,323	270,271	280,114	291,547	292,778	341,637	384,680	453,485	497,361	661,753
Tabora	299,872	313,721	356,071	447,496	551,501	685,103	733,406	860,404	1,029,411	1,139,970	1,242,423
Rukwa	295,030	297,632	337,155	429,981	483,240	547,334	611,089	724,781	871,896	974,823	1,092,300
Kigoma	192,993	225,235	255,641	440,418	466,714	514,225	575,350	636,324	751,978	840,748	906,042
Shinyanga	632,765	703,032	813,433	823,035	857,221	910,124	1,058,089	1,255,940	1,502,902	1,680,318	1,959,401
Kagera	318,190	345,897	393,354	577,162	602,560	643,605	746,076	843,809	1,001,251	1,119,448	1,260,688
Mwanza	696,697	872,115	1,017,141	1,029,028	1,190,370	1,347,027	1,548,825	1,812,176	2,155,982	2,594,149	2,958,739
Mara	301,872	305,676	346,941	546,139	582,914	641,655	726,076	807,383	961,438	1,054,459	1,171,243
Manyara	-	-	332,617	337,813	427,938	535,863	569,380	718,738	862,074	945,482	1,072,269
Tanzania Mainland	8,152,790	9,100,274	10,444,507	12,107,062	13,971,592	15,965,294	17,941,268	20,948,403	24,781,679	28,212,646	32,293,479

Table 27: Regional GDP at Current Prices (Percentages)

Region/Year	Percentage										
	2000	2001	2002	2003	2004	2005	2006	2007	2008	2009r	2010p
Dodoma	3.37	3.47	3.49	3.31	3.11	3.01	3.05	3.01	3.05	3.03	3.17
Arusha	7.61	7.64	4.52	3.96	4.35	4.53	4.53	4.52	4.62	4.67	4.87
Kilimanjaro	4.10	4.07	4.05	4.35	4.72	4.90	4.81	4.71	4.78	4.61	4.45
Tanga	4.20	4.42	4.39	4.26	5.33	5.78	5.56	5.58	4.90	4.72	4.65
Morogoro	4.42	4.76	4.76	4.47	5.49	5.41	5.39	5.41	5.07	4.88	4.87
Pwani	2.10	2.03	2.00	2.31	2.08	1.94	1.95	1.89	1.87	1.81	1.88
Dar es Salaam	17.27	16.82	16.93	16.18	15.14	15.02	15.50	15.59	15.98	17.19	16.81
Lindi	2.15	2.08	2.05	2.34	2.11	1.97	1.97	1.94	1.91	1.84	1.93
Mtwara	3.80	3.89	3.84	2.97	2.68	2.50	2.51	2.42	2.46	2.37	2.87
Ruvuma	3.62	3.18	3.15	3.83	3.85	4.08	3.89	4.01	4.06	3.91	3.69
Iringa	5.36	5.57	5.59	5.53	5.36	5.43	5.32	5.36	5.41	5.21	5.27
Mbeya	5.52	5.75	5.76	5.92	6.76	7.11	7.01	7.16	7.18	7.32	7.36
Singida	2.89	2.65	2.59	2.31	2.09	1.83	1.90	1.84	1.83	1.76	2.05
Tabora	3.68	3.45	3.41	3.70	3.95	4.29	4.09	4.11	4.15	4.04	3.85
Rukwa	3.62	3.27	3.23	3.55	3.46	3.43	3.41	3.46	3.52	3.46	3.38
Kigoma	2.37	2.48	2.45	3.64	3.34	3.22	3.21	3.04	3.03	2.98	2.81
Shinyanga	7.76	7.73	7.79	6.80	6.14	5.70	5.90	6.00	6.06	5.96	6.07
Kagera	3.90	3.80	3.77	4.77	4.31	4.03	4.16	4.03	4.04	3.97	3.90
Mwanza	8.55	9.58	9.74	8.50	8.52	8.44	8.63	8.65	8.70	9.19	9.16
Mara	3.70	3.36	3.32	4.51	4.17	4.02	4.05	3.85	3.88	3.74	3.63
Manyara	0.00	0.00	3.18	2.79	3.06	3.36	3.17	3.43	3.48	3.35	3.32
Tanzania Mainland	100.00	100.00	100.00	100.00	100.00	100.00	100.00	100.00	100.00	100.00	100.00

Table 28: Regional Per Capita GDP at Current Prices

Region/Year	2000	2001	2002	2003	2004	2005	2006	2007	2008	2009r	2010p
Dodoma	166,886	185,600	214,743	233,940	247,570	268,728	288,506	323,677	377,235	414,597	485,211
Arusha	305,769	332,612	364,950	362,005	440,602	506,902	550,650	621,356	729,676	814,569	945,437
Kilimanjaro	169,196	182,279	306,221	377,778	465,260	544,421	574,264	642,302	755,037	810,871	879,432
Tanga	201,287	229,192	279,362	310,698	440,305	537,227	569,319	636,262	646,284	692,939	763,203
Morogoro	210,921	246,231	282,353	302,282	417,184	458,877	501,138	573,651	620,921	665,618	744,234
Pwani	206,432	216,547	235,022	309,379	313,918	328,688	360,441	399,381	457,685	490,521	572,466
Dar es Salaam	630,453	664,688	708,047	760,056	785,985	856,391	992,362	1,133,503	1,337,257	1,594,976	1,740,947
Lindi	210,334	220,906	270,559	354,823	364,047	385,378	415,586	466,839	534,268	574,282	673,096
Mtwara	285,753	316,463	354,934	315,567	322,871	339,784	368,787	407,062	478,660	514,520	700,436
Ruvuma	260,527	247,805	294,210	408,120	460,501	546,530	565,430	661,655	772,504	824,799	866,191
Iringa	263,852	296,583	390,261	443,007	488,254	558,444	589,607	681,130	797,739	859,875	979,882
Mbeya	214,628	241,734	290,861	340,459	438,214	515,887	536,133	618,610	711,201	800,021	892,877
Singida	221,084	219,542	247,783	254,111	258,470	254,509	279,386	305,655	350,294	373,694	483,922
Tabora	216,818	220,044	207,270	253,933	301,884	362,967	365,950	412,456	474,181	504,710	528,832
Rukwa	270,510	264,731	295,298	367,564	398,486	437,273	469,246	537,042	623,288	672,237	726,658
Kigoma	163,699	185,332	152,249	252,894	255,434	269,144	291,946	397,449	450,535	483,158	499,428
Shinyanga	255,664	275,556	289,934	286,342	288,554	297,409	322,806	368,201	423,431	455,008	510,023
Kagera	170,377	179,671	193,399	277,336	280,703	291,644	337,557	367,979	420,758	453,235	491,713
Mwanza	272,881	331,368	345,713	342,032	383,199	421,379	488,758	554,907	640,826	748,766	829,647
Mara	222,705	218,764	253,501	391,986	408,052	439,107	461,861	495,013	568,074	600,338	642,528
Manyara	-	-	319,682	318,594	388,542	469,489	475,255	578,697	669,166	707,159	772,364
Tanzania Mainland	255,575	276,741	310,991	353,496	396,154	441,063	478,100	547,081	627,787	693,470	770,464

Note – Denotes that the region was non existent

Appendix 1: Average Annual Rates of Growth of total GDP at 2001 Prices

2001	2002	2003	2004	2005	2006	2007	2008	2009r	2010p
8,488,274	9,096,251	9,722,362	10,483,313	11,255,608	12,013,295	12,874,170	13,828,681	14,663,656	15,700,057
2001	7.2	7.0	7.3	7.3	7.2	7.2	7.2	7.1	7.0
2002		6.9	7.4	7.4	7.2	7.2	7.2	7.1	7.0
2003			7.8	7.6	7.3	7.3	7.3	7.1	7.0
2004				7.4	7.0	7.1	7.2	6.9	6.9
2005					6.7	6.9	7.1	6.8	6.8
2006						7.2	7.3	6.9	6.8
2007							7.4	6.7	6.6
2008								6.0	6.6
2009									7.1

Appendix 2: Average Annual Rates of Growth of Agriculture and Fishing GDP at 2001 Prices

2001	2002	2003	2004	2005	2006	2007	2008	2009r	2010p
2,789,853	2,930,528	3,024,848	3,203,531	3,345,060	3,474,748	3,615,382	3,781,009	3,902,282	4,060,554
2001	5.0	4.1	4.7	4.6	4.5	4.4	4.4	4.3	4.2
2002		3.2	4.6	4.5	4.4	4.3	4.3	4.2	4.2
2003			5.9	5.2	4.7	4.6	4.6	4.3	4.1
2004				4.4	4.1	4.1	4.2	4.0	4.0
2005					3.9	4.0	4.2	3.9	3.9
2006						4.0	4.3	3.9	3.9
2007							4.6	3.9	3.8
2008								3.2	3.6
2009									4.1

Appendix 3: Average Annual Rates of Growth of Industry & Construction GDP at 2001 Prices

2001	2002	2003	2004	2005	2006	2007	2008	2009r	2010p
1,638,459	1792024	1988081	2,204,619	2,433,261	2,639,902	2,889,519	3,138,241	3,357,703	3,633,664
2001	9.4	10.2	10.4	10.4	10.0	9.9	9.7	9.4	9.2
2002		10.9	10.9	10.7	10.2	10.0	9.8	9.4	9.1
2003			10.9	10.6	9.9	9.8	9.6	9.1	8.8
2004				10.4	9.4	9.4	9.2	8.8	8.5
2005					8.5	9.0	8.9	8.4	8.2
2006						9.5	9.0	8.3	8.0
2007							8.6	7.8	7.7
2008								7.0	7.6
2009									8.2

Appendix 4: Average Annual Rates of Growth of Services GDP at 2001 Prices

2001	2002	2003	2004	2005	2006	2007	2008	2009r	2010p
4,139,962	4,460,699	4,806,587	5,182,094	5,596,784	6,035,932	6,527,561	7,085,136	7,594,661	8,214,209
2001	7.7	7.8	7.8	7.8	7.8	7.9	8	7.9	7.9
2002		7.8	7.8	7.9	7.9	7.9	8	7.9	7.9
2003			7.8	7.9	7.9	8	8.1	7.9	7.9
2004				8	7.9	8	8.1	7.9	7.9
2005					7.8	8	8.2	7.9	7.9
2006						8.1	8.3	8	7.9
2007							8.5	7.9	7.8
2008								7.2	7.7
2009									8.2

National Bureau of Statistics

Vision

To be a preferable source of official statistics in Tanzania

Mission

To facilitate informed decision-making process, through provision of relevant, timely and reliable user-driven statistical information, coordinating statistical activities and promoting the adherence to statistical methodologies and standards

More information is available at NBS website: www.nbs.go.tz

Contact person: Director General

National Bureau of Statistics

Box 796

Dar es Salaam

Tel: (+255) 22 2122722/3

Fax: (+255) 22 2130852

E-mail: dg@nbs.go.tz