



THE UNITED REPUBLIC OF TANZANIA

**QUARTERLY GROSS DOMESTIC PRODUCT OF
TANZANIA MAINLAND
FIRST QUARTER, 2011**



National Bureau of Statistics
Ministry of Finance
Dar es Salaam
June, 2011

Table of Contents

	Page
1.0 Introduction	1
1.1 Economic Performance	1
2.0 Agriculture	3
3.0 Fishing.....	4
4.0 Mining and Quarrying.....	4
5.0 Manufacturing	5
6.0 Electricity and Water.....	7
7.0 Construction	7
8.0 Wholesale and Retail Trade; Repair of Motor Vehicles, Motorcycles, Personal and Household Goods	7
9.0 Hotels and Restaurants.....	8
10.0 Transport and Communication.....	8
11.0 Financial Intermediation	9
12.0 Real Estates and Business Services	9
13.0 Public Administration	9
14.0 Education.....	10
15.0 Health, Other Social, Community and Personal Services....	
10	



List of Figures

Figure 1: Growth Rates for the First Quarter, 2002-2011.....	2
Figure 2: Production / Harvested Quantity of Selected Major Crops for the First Quarter 2010 - 2011	4
Figure 3: Gross Value Added Growth Rates for Mining and Quarrying, First Quarter 2002-2011	5
Figure 4: Production Index of Selected Commodities for the First Quarter 2010 and 2011	5

List of Annexes

Annex 1: Gross Value Added by Activity at Constant 2001 Prices in Million Tshs	11
Annex 2: Gross Value Added by Activity at Constant 2001 prices – Percentage Changes	18



QUARTERLY GROSS DOMESTIC PRODUCT FIRST QUARTER 2011

1.0 Introduction

This report presents the official Quarterly Gross Domestic Product (QGDP) estimates for Tanzania Mainland. The compilation of QGDP follows the need of having appropriate policy interventions which can be achieved through reliable and frequent reports on recent economic developments. The current quarterly GDP estimates may be revised on the availability of the revised data from the field.

1.1 Economic Performance

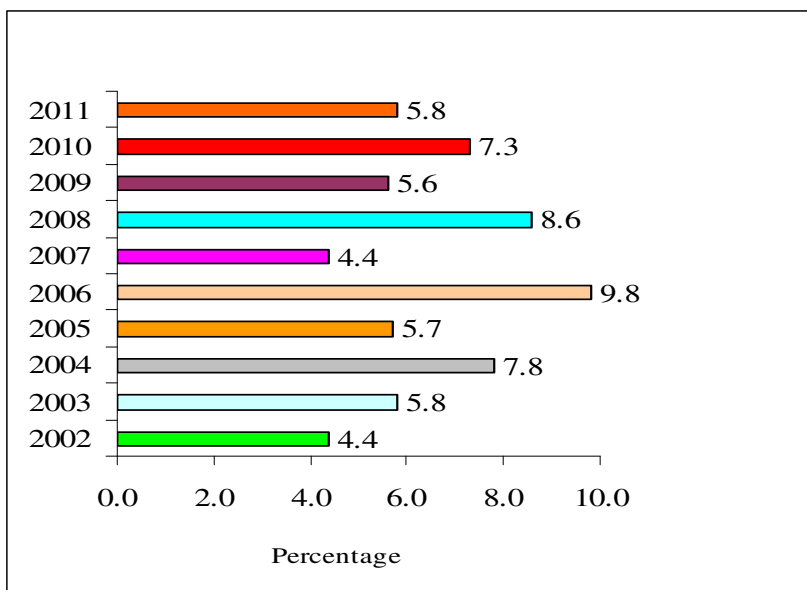
In the report, the real growth rates are measured as percentage changes of QGDP for current year as compared to the QGDP for the previous year. The real growth rate for the first quarter of the year 2011 is the percentage change between QGDP of the first quarter of the year 2010 and the corresponding figure for the year 2011.



The Real Gross Domestic Product at market prices is estimated to have increased a growth rate of 5.8 percent in the first quarter of 2011 compared to growth rate of 7.3 percent in the first quarter of 2010.

In absolute terms, the QGDP for the quarter under review was 3,942,621 million shillings in 2011 compared to 3,725,141 million shillings in 2010, (Annex 1)

Figure 1: Growth Rates for the First Quarter, 2002-2011

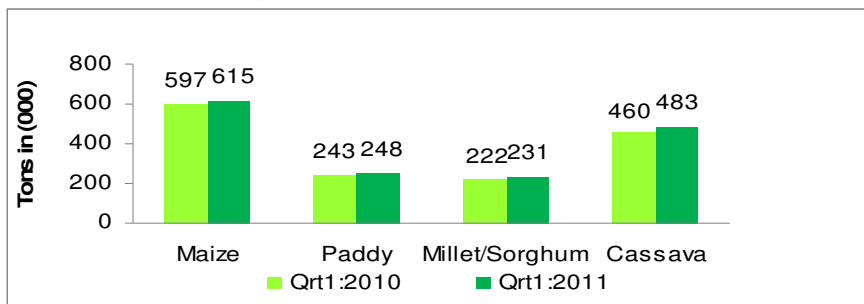


2.0 Agriculture

The activity registered a growth rate of 2.6 percent in the first quarter of 2011 compared to 0.7 percent in the same quarter of 2010. During the period under review, there was enough rainfall in regions that produce short rain crops.

The increase in growth rate was due to the increase in the harvest of major food crops. The quantity of maize harvested went up by 3.0 percent from 597 thousand tonnes in the first quarter of 2010 to 615 thousand tonnes in the first quarter of 2011. Paddy harvested increased from 243 thousand tonnes in the first quarter of 2010 to 248 thousand tonnes in the corresponding quarter of 2011. Millet/Sorghum harvested in the first quarter of 2010 was 222 thousand tonnes compared to 231 thousand tonnes in the corresponding quarter of 2011 which is an increase of 4.0 percent, while Cassava harvested increased by 1.0 percent from 460 thousand tonnes in the first quarter of 2010 to 483 thousand tonnes in the first quarter of 2011.

Figure 2: Production / Harvested Quantity of Selected Major Crops for the First Quarter 2010 – 2011



3.0 Fishing

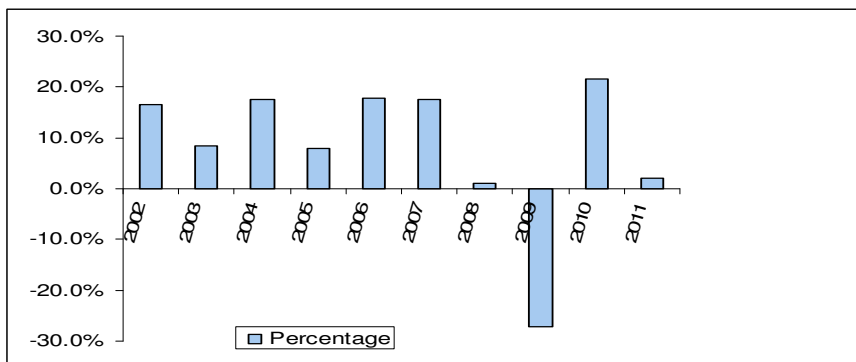
Fishing recorded a growth rate of 2.3 percent in the first quarter of 2011 compared to 8.5 percent in the corresponding quarter of 2010. The growth rate is mainly attributed to slight increase of demand for fish and fish products both at local and foreign markets.

4.0 Mining and Quarrying

The activity recorded a growth rate of 2.1 percent in the first quarter of 2011 compared to a growth rate of 21.7 percent in the first quarter of 2010. The growth rate was due to slight increase in Gold, Diamond and Tanzanite production from 8,051kg, 40,694 carat and 3,337kg respectively in the first quarter of

2010 to 10,363kg, 46,241 carat and 3,404 kg respectively in the same quarter in 2011.

Figure 3: Growth Rates for Mining and Quarrying, First Quarter 2002-2011



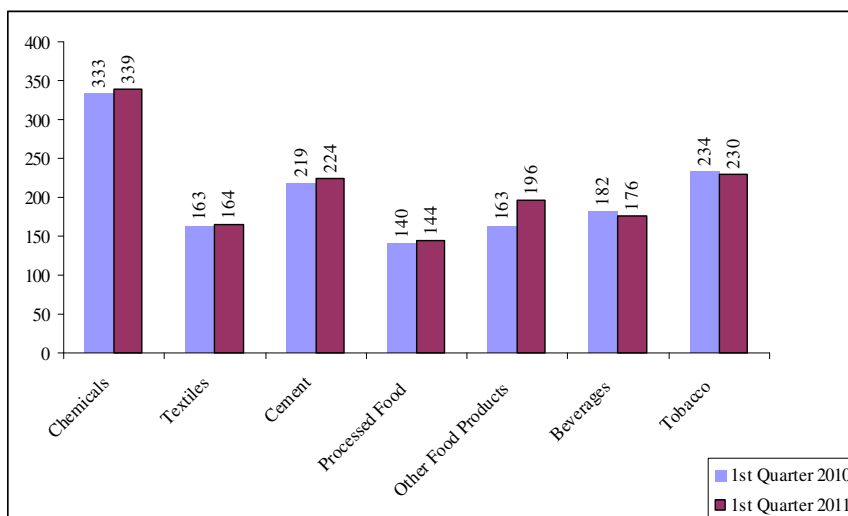
5.0 Manufacturing

The activity recorded a growth rate of 4.8 percent in the first quarter of 2011 compared to 5.0 percent in 2010. The growth rate for this activity was due to an overall slight increase in the index of industrial production from 168.4 in the first quarter of 2010 to 175.9 in the first quarter of 2011 which was a result of unreliable electricity power supply.

However, slight increases were recorded in the manufacture of chemicals, textiles, cement, processed food and other food products, such that, the volume index of chemicals increased

from 333 in the first quarter of 2010 to 339 in first quarter of 2011, while the volume index of textiles had slightly increased from 163 in the first quarter of 2010 to 164 in first quarter of 2011. The index of manufacturing of cement increased from 219 percent in the first quarter of 2010 to 224 percent in the first quarter of 2011. The volume index of processed food increased from 140 percent in the first quarter of 2010 to 144 percent in the first quarter of 2011 whereas; volume index of other food products increased from 163 percent in the first quarter of 2010 to 196 percent in the first quarter of 2011.

Figure 4: Production Index of Selected Commodities for the First Quarter 2010 and 2011



Gross Domestic Product, First Quarter 2011



6.0 Electricity and Water

The growth rate of electricity was 1.5 percent in the first quarter of 2011 compared to 5.5 percent in the corresponding quarter of 2010. The growth rate was attributed to shortage of rainfall especially in the hydro dam catchment areas and services of gas turbines during the period.

7.0 Construction

Construction activity grew at a rate of 8.2 percent in the first quarter of 2011 compared to a growth rate of 8.6 percent in the first quarter of 2010; the growth rate is attributed to slight increase in the construction of residential and non-residential buildings, roads and bridges; and land improvement activities during the reference period.

8.0 Wholesale and Retail Trade; Repair of Motor Vehicles, Motorcycles, Personal and Household Goods

This activity recorded a growth of 8.0 percent in the first quarter of 2011 compare to 9.0 percent in the first quarter of 2010. The growth rate is attributed to a slight increase in traded domestic manufactured goods and imports of merchandized goods in the period under review. During the period, trade turnover increased

Gross Domestic Product, First Quarter 2011



from Shs. 919,049 million in the first quarter of 2010 to Shs. 1,201,897 million in the same quarter in 2011.

9.0 Hotels and Restaurants

Hotels and restaurants recorded a growth rate of 2.9 percent in the first quarter of 2011 compared to 3.5 percent in the first quarter of 2010. The growth rate is attributed to slight increase in the number of international and resident visitors in hotels. The overall international bed occupancy increased from 140,290 in the first quarter of 2010 to 142,263 in the same quarter of 2011, while the domestic bed occupancy increased from 149,999 in the first quarter of 2010 to 150,736 in the same quarter of 2011.

10.0 Transport and Communication

The activity recorded a growth rate of 10.5 percent in the first quarter of 2011 compared to 11.3 percent in the first quarter of 2010. The performance is attributed to a slight increase in the number of passengers carried and cargo/freight handled for almost all modes of transport and increased airtime used by cell phones customers during the period under review.

11.0 Financial Intermediation

The activity recorded a growth rate of 10.3 percent in the first quarter of 2011 compared to 9.8 percent in the corresponding quarter of 2010. The performance is attributed among others to the increase in levels of deposits and lending by commercial banks.

12.0 Real Estates and Business Services

The activity recorded a growth rate of 8.8 percent in the first quarter of 2011 compared to a growth rate of 13.1 percent in the corresponding quarter of 2010. The growth rate is attributed to slight increase in the overall weighted index of business services, rented dwellings and owner occupied dwellings. The index for business services increased from 402 percent in the first quarter of 2010 compared to 449 percent in the corresponding quarter of 2011.

13.0 Public Administration

The activity recorded a growth rate of 3.7 percent in the first quarter of 2011 compared to 6.5 percent in the first quarter of 2010. The growth rate is attributed to slight increase in the rate of recruitment of new employees by the government during the reference period.

14.0 Education

The activity recorded a growth rate of 6.8 percent in the first quarter of 2011 compared to 5.9 percent in the corresponding quarter of 2010. This was due to an increase in the number of pupils/students enrolled in 2011 compared to 2010

15.0 Health, Other Social, Community and Personal Services

The activity recorded a growth rate of 3.9 percent in the first quarter of 2011 compared to 5.6 percent in a similar quarter of 2010. The growth rate is attributed to slight increase in number of patients attended in health facilities and improved other social, community and personal services.

Annexes

Annex 1: Gross Value Added by Activity at Constant 2001 Prices in Million Tshs

Year	Quarter	Agriculture	Fishing	Mining and quarrying	Manufacturing	Electricity	Construction	Wholesale and retail trade	Hotels and restaurants	Transport and communication
2001		2,636,193	153,660	159,979	762,400	240,700	475,380	1,182,797	250,978	599,845
2002		2,766,479	164,050	187,000	819,200	254,084	531,740	1,281,544	267,162	640,549
2003		2,850,956	172,893	219,000	893,000	271,081	605,000	1,405,698	275,836	685,940
2004		3,017,988	185,543	254,000	977,000	290,265	683,354	1,486,931	285,732	757,732
2005		3,148,384	196,676	295,000	1,071,000	314,918	752,343	1,585,906	301,873	828,851
2006		3,268,238	206,509	341,000	1,162,000	313,252	823,650	1,736,631	314,921	900,537
2007		3,399,648	215,734	377,559	1,263,435	344,981	903,544	1,906,821	328,859	991,649
2008		3,554,488	226,521	386,998	1,388,515	364,311	998,416	2,097,503	343,658	1,099,198
2009		3,669,645	232,637	391,642	1,499,596	393,168	1,073,297	2,254,816	358,779	1,220,268
2010		3,824,428	236,126	402,331	1,618,064	439,016	1,182,581	2,439,711	380,664	1,369,496
2001	1	492,584	34,292	43,547	176,716	66,301	111,956	294,575	66,391	160,029
	2	759,296	43,439	42,614	189,711	55,838	128,996	285,447	55,729	153,281
	3	992,816	40,010	39,151	197,774	57,478	112,563	303,030	69,969	143,552
	4	391,497	35,919	34,667	198,198	61,083	121,865	299,744	58,890	142,983
2002	1	497,522	38,802	50,771	182,963	70,439	124,300	300,102	70,003	168,392
	2	789,354	48,780	48,899	188,505	58,639	141,403	305,717	61,792	160,922
	3	1,087,055	41,158	45,475	221,719	54,389	134,002	322,114	73,827	151,418

Annex 1:Gross Value Added by Activity at Constant 2001 Prices in Million Tshs

Year	Quarter	Agriculture	Fishing	Mining and quarrying	Manufacturing	Electricity	Construction	Wholesale and retail trade	Hotels and restaurants	Transport and communication
	4	392,549	35,310	41,856	226,014	70,617	132,035	353,611	61,539	159,817
2003	1	510,017	39,886	55,054	207,981	70,468	134,324	308,605	73,436	182,692
	2	807,087	47,395	56,809	206,134	67,783	170,480	314,591	63,376	178,768
	3	1,131,875	45,415	55,271	233,457	65,566	153,013	358,764	75,002	164,291
	4	401,978	40,196	51,865	245,428	67,263	147,183	423,738	64,022	160,189
2004	1	533,368	42,572	64,676	223,595	68,591	175,352	336,165	72,820	190,828
	2	877,866	47,710	66,794	222,035	71,560	177,364	324,681	65,868	183,695
	3	1,194,174	48,326	63,990	266,490	72,519	159,043	366,097	78,282	181,540
	4	412,580	46,935	58,539	264,880	77,595	171,595	459,988	68,762	201,670
2005	1	551,416	49,949	69,843	243,874	76,435	166,987	347,885	75,422	204,294
	2	909,052	54,038	68,950	249,882	75,653	186,497	353,373	69,281	212,471
	3	1,263,260	44,874	71,746	282,440	77,420	206,500	392,957	80,310	207,292
	4	424,656	47,815	84,461	294,804	85,409	192,360	491,691	76,861	204,794
2006	1	569,968	50,196	82,277	276,974	77,122	209,116	357,567	75,564	250,766
	2	970,305	57,482	82,620	277,032	78,155	206,080	428,838	71,551	225,248

Annex 1: Gross Value Added by Activity at Constant 2001 Prices in Million Tshs

Year	Quarter	Agriculture	Fishing	Mining and quarrying	Manufacturing	Electricity	Construction	Wholesale and retail trade	Hotels and restaurants	Transport and communication
	3	1,313,127	53,824	88,769	302,646	79,028	204,705	430,562	84,195	208,351
	4	414,838	45,007	87,335	305,348	78,947	203,749	519,664	83,611	216,172
2007	1	587,938	57,042	96,606	289,732	84,576	221,414	414,649	78,471	215,118
	2	1,000,903	53,368	89,523	304,330	88,094	202,965	449,434	74,577	243,303
	3	1,384,616	51,597	93,480	330,291	85,032	217,351	463,507	89,457	262,546
	4	426,190	53,728	97,950	339,082	87,279	261,814	579,231	86,354	270,683
2008	1	671,567	45,033	97,505	309,770	86,828	239,091	456,965	81,970	244,005
	2	930,240	60,642	105,248	321,488	86,221	199,343	504,228	77,236	265,125
	3	1,468,692	67,336	97,132	364,666	90,359	291,252	519,028	92,600	283,806
	4	483,989	53,510	87,113	392,592	100,903	268,731	617,282	91,852	306,262
2009	1	675,041	50,680	71,092	334,121	92,898	256,689	509,399	84,432	268,702
	2	982,975	65,976	94,312	350,060	95,413	198,186	527,828	80,211	301,321
	3	1,539,279	65,354	104,058	392,326	100,497	275,462	559,698	97,100	299,861
	4	472,350	50,626	122,180	423,089	104,360	342,961	657,891	97,036	350,384

Annex 1:Gross Value Added by Activity at Constant 2001 Prices in Million Tshs

Year	Quarter	Agriculture	Fishing	Mining and quarrying	Manufacturing	Electricity	Construction	Wholesale and retail trade	Hotels and restaurants	Transport and communication
2010	1	679,797	55,006	86,540	350,983	98,047	278,747	555,331	87,395	298,967
	2	1,002,003	66,762	102,369	372,938	107,138	245,686	578,677	86,048	321,348
	3	1,639,503	64,437	111,067	425,780	116,747	311,853	601,155	103,852	338,678
	4	503,125	49,921	102,356	468,364	117,084	346,295	704,547	103,370	410,503
2011	1	697,684	56,297	88,372	367,928	99,515	301,670	600,023	89,960	330,408

Year	Quarter	Financial intermediation	Real estate	Public administration	Education	Other services	FISIM	All indust. at basic prices	Taxes on products	GDP at market prices
2001		140,000	936,440	640,649	188,733	200,520	-80,000	8,488,274	612,000	9,100,274
2002		154,108	1,003,260	699,561	202,000	212,515	-87,000	9,096,252	655,926	9,752,178
2003		170,643	1,068,732	766,760	207,606	225,372	-97,154	9,721,363	701,372	10,422,735
2004		184,775	1,141,014	871,169	215,910	238,831	-106,931	10,483,313	756,422	11,239,735
2005		204,694	1,226,790	970,786	224,547	253,337	-119,497	11,255,608	812,482	12,068,090
2006		228,000	1,316,000	1,033,488	235,774	270,581	-137,287	12,013,294	867,868	12,881,162
2007		251,280	1,408,120	1,102,951	248,742	289,140	-158,292	12,874,170	927,751	13,801,921
2008		281,120	1,508,097	1,180,158	265,905	309,499	-175,704	13,828,682	999,664	14,828,346
2009		306,339	1,610,647	1,232,313	284,704	326,795	-190,990	14,663,656	1,057,645	15,721,301
2010		337,356	1,723,392	1,312,414	305,402	345,774	-	15,708,384	1,128,507	16,836,891

Year	Quarter	Financial intermediation	Real estate	Public administration	Education	Other services	FISIM	All indust. at basic prices	Taxes on products	GDP at market prices
							208,370			
2001	1	35,873	239,586	157,063	47,743	47,816	-21,432	1,953,040	145,429	2,098,470
	2	35,072	224,243	158,075	47,348	49,752	-20,980	2,207,862	139,048	2,346,910
	3	36,613	229,890	160,659	47,429	51,102	-21,731	2,460,305	165,157	2,625,462
	4	32,442	242,721	164,852	46,214	51,849	-15,857	1,867,066	162,365	2,029,432
2002	1	45,748	248,840	169,236	51,975	52,258	-26,843	2,044,508	146,432	2,190,940
	2	38,940	239,929	172,730	50,481	52,740	-21,987	2,336,844	149,483	2,486,326
	3	38,043	248,593	176,642	50,122	53,377	-21,075	2,676,860	176,818	2,853,679
	4	31,376	265,898	180,952	49,422	54,139	-17,095	2,038,040	183,194	2,221,233
2003	1	38,622	262,911	184,553	52,672	55,046	-21,401	2,154,865	163,228	2,318,093
	2	43,558	256,478	188,487	52,019	56,129	-24,191	2,484,903	157,775	2,642,678
	3	46,314	266,597	193,641	52,146	56,870	-26,247	2,871,977	184,520	3,056,498
	4	42,149	282,746	200,080	50,769	57,327	-25,315	2,209,618	195,849	2,405,466
2004	1	44,970	279,731	207,126	55,305	58,126	-25,931	2,327,294	170,543	2,497,837
	2	45,650	258,940	214,159	53,576	59,194	-25,737	2,643,353	164,173	2,807,527
	3	48,131	282,532	221,307	54,192	60,242	-27,582	3,069,285	212,221	3,281,506
	4	46,024	319,811	228,577	52,837	61,269	-27,680	2,443,381	209,485	2,652,866
2005	1	45,596	300,966	234,947	57,167	62,043	-26,715	2,460,108	180,086	2,640,194

Year	Quarter	Financial intermediation	Real estate	Public administration	Education	Other services	FISIM	All indust. at basic prices	Taxes on products	GDP at market prices
	2	53,007	278,664	239,830	55,776	62,758	-31,269	2,837,964	185,135	3,023,099
	3	49,855	324,131	245,181	56,558	63,695	-29,663	3,336,555	218,653	3,555,208
	4	56,236	323,029	250,827	55,046	64,842	-31,850	2,620,981	228,608	2,849,589
2006	1	56,131	347,418	253,715	60,942	66,017	-33,586	2,700,187	199,643	2,899,830
	2	53,480	288,480	255,925	58,890	67,183	-32,352	3,088,916	202,618	3,291,534
	3	59,366	350,671	259,470	59,548	68,225	-34,803	3,527,683	229,457	3,757,140
	4	59,023	329,431	264,379	56,395	69,157	-36,546	2,696,508	236,150	2,932,658

2007	1	42,618	359,810	269,538	65,057	70,260	-24,771	2,828,057	198,634	3,026,691
	2	59,361	332,296	273,252	61,766	71,546	-37,455	3,267,262	212,533	3,479,795
	3	70,964	360,201	277,623	61,490	72,927	-45,302	3,775,779	252,728	4,028,507
	4	78,338	355,813	282,537	60,429	74,407	-50,764	3,003,071	263,856	3,266,928
2008	1	50,607	386,044	288,262	66,875	75,725	-31,041	3,069,205	216,891	3,286,096
	2	66,913	359,153	294,515	66,739	76,684	-41,642	3,372,133	234,545	3,606,678
	3	79,073	388,054	298,109	66,488	77,861	-49,665	4,134,791	268,764	4,403,555
	4	84,526	374,846	299,272	65,802	79,229	-53,356	3,252,553	279,464	3,532,016
2009	1	55,417	419,694	301,927	72,097	80,209	-34,114	3,238,286	232,685	3,470,971
	2	79,146		306,032	71,295	81,134	-50,111	3,566,296	235,429	3,801,726

Year	Quarter	Financial inter-mediation	Real estate	Public administration	Education	Other services	FISIM	All indust. at basic prices	Taxes on products	GDP at market prices
			382,517							
	3	92,391	403,185	310,133	70,789	82,156	-57,488	4,334,800	276,644	4,611,444
	4	79,385	405,250	314,222	70,522	83,297	-49,277	3,524,273	312,887	3,837,160
2010	1	60,847	474,835	321,598	76,364	84,690	-37,702	3,471,446	253,695	3,725,141
	2	90,676	403,965	327,432	76,352	86,221	-56,564	3,811,051	245,574	4,056,625
	3	101,688	418,450	331,027	76,345	87,207	-61,627	4,666,163	283,742	4,949,905
	4	84,144	426,141	332,357	76,341	87,656	-52,478	3,759,724	345,496	4,105,220
2011	1	67,102	516,450	333,536	81,556	88,017	-41,973	3,676,545	266,076	3,942,621

p = provisional, r = revised

Annex 2: Gross Value Added by Activity at Constant 2001 prices – Percentage Changes

Year	Quarter	Agriculture	Fishing	Mining and quarrying	Manufacturing	Electricity	Construction	Wholesale and retail trade	Hotels and restaurants	Transport and communication
2001										
2002		4.9	6.8	16.9	7.5	5.6	11.9	8.3	6.4	6.8
2003		3.1	5.4	17.1	9.0	6.7	13.8	9.7	3.2	7.1
2004		5.9	7.3	16.0	9.4	7.1	13.0	5.8	3.6	10.5
2005		4.3	6.0	16.1	9.6	8.5	10.1	6.7	5.6	9.4
2006		3.8	5.0	15.6	8.5	-0.5	9.5	9.5	4.3	8.6
2007		4.0	4.5	10.7	8.7	10.1	9.7	9.8	4.4	10.1
2008		4.6	5.0	2.5	9.9	5.6	10.5	10.0	4.5	10.8
2009		3.2	2.7	1.2	8.0	7.9	7.5	7.5	4.4	11.0
2010		4.2	1.5	2.7	7.9	11.7	10.2	8.2	6.1	12.2
2002	1	1.0	13.2	16.6	3.5	6.2	11.0	1.9	5.4	5.2
	2	4.0	12.3	14.7	-0.6	5.0	9.6	7.1	10.9	5.0
	3	9.5	2.9	16.2	12.1	-5.4	19.0	6.3	5.5	5.5
	4	0.3	-1.7	20.7	14.0	15.6	8.3	18.0	4.5	11.8
	Annual	4.9	6.8	16.9	7.5	5.6	11.9	8.3	6.4	6.8
2003	1	2.5	2.8	8.4	13.7	0.0	8.1	2.8	4.9	8.5
	2	2.2	-2.8	16.2	9.4	15.6	20.6	2.9	2.6	11.1
	3	4.1	10.3	21.5	5.3	20.6	14.2	11.4	1.6	8.5
	4	2.4	13.8	23.9	8.6	-4.7	11.5	19.8	4.0	0.2
	Annual	3.1	5.4	17.1	9.0	6.7	13.8	9.7	3.2	7.1

Annex 2: Gross Value Added by Activity at Constant 2001 prices – Percentage Changes

Year	Quarter	Agriculture	Fishing	Mining and quarrying	Manufacturing	Electricity	Construction	Wholesale and retail trade	Hotels and restaurants	Transport and communication
2004	1	4.6	6.7	17.5	7.5	-2.7	30.5	8.9	-0.8	4.5
	2	8.8	0.7	17.6	7.7	5.6	4.0	3.2	3.9	2.8
	3	5.5	6.4	15.8	14.1	10.6	3.9	2.0	4.4	10.5
	4	2.6	16.8	12.9	7.9	15.4	16.6	8.6	7.4	25.9
	Annual	5.9	7.3	16.0	9.4	7.1	13.0	5.8	3.6	10.5
2005	1	3.4	17.3	8.0	9.1	11.4	-4.8	3.5	3.6	7.1
	2	3.5	13.3	3.2	12.5	5.7	5.1	8.8	5.2	15.7
	3	5.8	-7.1	12.1	6.0	6.8	29.8	7.3	2.6	14.2
	4	2.9	1.9	44.3	11.3	10.1	12.1	6.9	11.8	1.5
	Annual	4.3	6.0	16.1	9.6	8.5	10.1	6.7	5.6	9.4
2006	1	3.4	0.5	17.8	13.6	0.9	25.2	2.8	0.2	22.7
	2	6.7	6.4	19.8	10.9	3.3	10.5	21.4	3.3	6.0
	3	3.9	19.9	23.7	7.2	2.1	-0.9	9.6	4.8	0.5
	4	-2.3	-5.9	3.4	3.6	-7.6	5.9	5.7	8.8	5.6
	Annual	3.8	5.0	15.6	8.5	-0.5	9.5	9.5	4.3	8.6

Annex 2: Gross Value Added by Activity at Constant 2001 prices – Percentage Changes

Year	Quarter	Agriculture	Fishing	Mining and quarrying	Manufacturing	Electricity	Construction	Wholesale and retail trade	Hotels and restaurants	Transport and communication
2007	1	3.2	13.6	17.4	4.6	9.7	5.9	16.0	3.8	-14.2
	2	3.2	-7.2	8.4	9.9	12.7	-1.5	4.8	4.2	8.0
	3	5.4	-4.1	5.3	9.1	7.6	6.2	7.7	6.2	26.0
	4	2.7	19.4	12.2	11.0	10.6	28.5	11.5	3.3	25.2
	Annual	4.0	4.5	10.7	8.7	10.1	9.7	9.8	4.4	10.1
2008	1	14.2	-21.1	0.9	6.9	2.7	8.0	10.2	4.5	13.4
	2	-7.1	13.6	17.6	5.6	-2.1	-1.8	12.2	3.6	9.0
	3	6.1	30.5	3.9	10.4	6.3	34.0	12.0	3.5	8.1
	4	13.6	-0.4	-11.1	15.8	15.6	2.6	6.6	6.4	13.1
	Annual	4.6	5.0	2.5	9.9	5.6	10.5	10.0	4.5	10.8
2009	1	0.5	12.5	-27.1	7.9	7.0	7.4	11.5	3.0	10.1
	2	5.7	8.8	-10.4	8.9	10.7	-0.6	4.7	3.9	13.7
	3	4.8	-2.9	7.1	7.6	11.2	-5.4	7.8	4.9	5.7
	4	-2.4	-5.4	40.3	7.8	3.4	27.6	6.6	5.6	14.4
	Annual	3.2	2.7	1.2	8.0	7.9	7.5	7.5	4.4	23.1
2010	1	0.7	8.5	21.7	5.0	5.5	8.6	9.0	3.5	11.3
	2	1.9	1.2	8.5	6.5	12.3	24.0	9.6	7.3	6.6
	3	6.5	-1.4	6.7	8.5	16.2	13.2	7.4	7.0	12.9
	4	6.5	-1.4	-16.2	10.7	12.2	1.0	7.1	6.5	17.2

Annex 2: Gross Value Added by Activity at Constant 2001 prices – Percentage Changes

Year	Quarter	Agriculture	Fishing	Mining and quarrying	Manufacturing	Electricity	Construction	Wholesale and retail trade	Hotels and restaurants	Transport and communication
	Annual	4.2	1.5	2.7	7.9	11.7	10.2	8.2	6.1	12.2
2011	1	2.6	2.3	2.1	4.8	1.5	8.2	8.0	2.9	10.5

p = provisional, r = revised

Year	Quarter	Financial intermediation	Real estate and business services	Public administration	Education	Other services	FISIM	All indust. at basic prices	Taxes on products	GDP at market prices
2001										
2002		10.1	7.1	9.2	7.0	6.0	8.7	7.2	7.2	7.2
2003		10.7	6.5	9.6	2.8	6.0	11.7	6.9	6.9	6.9
2004		8.3	6.8	13.6	4.0	6.0	10.1	7.8	7.8	7.8
2005		10.8	7.5	11.4	4.0	6.1	11.8	7.4	7.4	7.4
2006		11.4	7.3	6.5	5.0	6.8	14.9	6.7	6.8	6.7
2007		10.2	7.0	6.7	5.5	6.9	15.3	7.2	6.9	7.1
2008		11.9	7.1	7.0	6.9	7.0	11.0	7.4	7.8	7.4
2009		9.0	6.8	4.4	7.1	5.6	8.7	6.0	5.8	6.0
2010		10.1	7.0	6.5	7.3	5.8	9.1	7.1	6.7	7.1
2002	1	27.5	3.9	7.8	8.9	9.3	25.2	4.7	0.7	4.4
	2	11.0	7.0	9.3	6.6	6.0	4.8	5.8	7.5	5.9



Gross Domestic Product, First Quarter 2011

Year	Quarter	Financial interme- diation	Real estate and business services	Public admi- nistratio n	Educatio n	Other services	FISIM	All indust. at basic prices	Taxes on produc ts	GDP at market prices
	3	3.9	8.1	9.9	5.7	4.5	-3.0	8.8	7.1	8.7
	4	-3.3	9.5	9.8	6.9	4.4	7.8	9.2	12.8	9.5
	Annual	10.1	7.1	9.2	7.0	6.0	8.7	7.2	7.2	7.2
2003	1	-15.6	5.7	9.1	1.3	5.3	-20.3	5.4	11.5	5.8
	2	11.9	6.9	9.1	3.0	6.4	10.0	6.3	5.5	6.3
	3	21.7	7.2	9.6	4.0	6.5	24.5	7.3	4.4	7.1
	4	34.3	6.3	10.6	2.7	5.9	48.1	8.4	6.9	8.3
	Annual	10.7	6.5	9.6	2.8	6.0	11.7	6.9	6.9	6.9
2004	1	16.4	6.4	12.2	5.0	5.6	21.2	8.0	4.5	7.8
	2	4.8	1.0	13.6	3.0	5.5	6.4	6.4	4.1	6.2
	3	3.9	6.0	14.3	3.9	5.9	5.1	6.9	15.0	7.4
	4	9.2	13.1	14.2	4.1	6.9	9.3	10.6	7.0	10.3
	Annual	8.3	6.8	13.6	4.0	6.0	10.1	7.8	7.8	7.8
2005	1	1.4	7.6	13.4	3.4	6.7	3.0	5.7	5.6	5.7
	2	16.1	7.6	12.0	4.1	6.0	21.5	7.4	12.8	7.7
	3	3.6	14.7	10.8	4.4	5.7	7.5	8.7	3.0	8.3
	4	22.2	1.0	9.7	4.2	5.8	15.1	7.3	9.1	7.4
	Annual	10.8	7.5	11.4	4.0	6.1	11.8	7.4	7.4	7.4
2006	1	23.1	15.4	8.0	6.6	6.4	25.7	9.8	10.9	9.8
	2	0.9	3.5	6.7	5.6	7.1	3.5	8.8	9.4	8.9

Year	Quarter	Financial interme- diation	Real estate and business services	Public admi- nistratio n	Educatio n	Other services	FISIM	All indust. at basic prices	Taxes on produc ts	GDP at market prices
	3	19.1	8.2	5.8	5.3	7.1	17.3	5.7	4.9	5.7
	4	5.0	2.0	5.4	2.5	6.7	14.7	2.9	3.3	2.9
	Annual	11.4	7.3	6.5	5.0	6.8	14.9	6.7	6.8	6.7
2007	1	-24.1	3.6	6.2	6.8	6.4	-26.2	4.7	-0.5	4.4
	2	11.0	15.2	6.8	4.9	6.5	15.8	5.8	4.9	5.7
	3	19.5	2.7	7.0	3.3	6.9	30.2	7.0	10.1	7.2
	4	32.7	8.0	6.9	7.2	7.6	38.9	11.4	11.7	11.4
	Annual	10.2	7.0	6.7	5.5	6.9	15.3	7.2	6.9	7.1
2008	1	18.7	7.3	6.9	2.8	7.8	25.3	8.5	9.1	8.6
	2	12.7	8.1	7.8	8.1	7.2	11.2	3.2	10.4	3.6
	3	11.4	7.7	7.4	8.1	6.8	9.6	9.5	6.3	9.3
	4	7.9	5.3	5.9	8.9	6.5	5.1	8.3	5.9	8.1
	Annual	11.9	7.1	7.0	6.9	7.0	11.0	7.4	7.8	7.4
2009	1	9.5	8.7	4.7	7.8	5.9	9.9	5.5	7.3	5.6
	2	18.3	6.5	3.9	6.8	5.8	20.3	5.8	0.4	5.4
	3	16.8	3.9	4.0	6.5	5.5	15.8	4.8	2.9	4.7
	4	-6.1	8.1	5.0	7.2	5.1	-7.6	8.4	12.0	8.6
	Annual	9.0	6.8	4.4	7.1	5.6	8.7	6.0	5.8	6.0
2010	1	9.8	13.1	6.5	5.9	5.6	10.5	7.2	9.0	7.3
	2	14.6	5.6	7.0	7.1	6.3	12.9	6.9	4.3	6.9

Year	Quarter	Financial interme- diation	Real estate and business services	Public admi- nistratio n	Educatio n	Other services	FISIM	All indust. at basic prices	Taxes on produc ts	GDP at market prices
	3	10.1	3.8	6.7	7.8	6.1	7.2	7.6	2.6	7.3
	4	6.0	5.2	5.8	8.3	5.2	6.5	6.7	10.4	7.0
	Annual	10.1	7.0	6.5	7.3	5.8	9.1	7.1	6.7	7.1
2011	1	10.3	8.8	3.7	6.8	3.9	11.3	6.0	4.9	5.9

p = provisional, r = revised

National Bureau of Statistics

Director General P.O. Box 796 Dar es Salaam
Telephone +255 22 2122724
General Office P.O. Box 796 Dar es Salaam
Telephone +255 22 2122722/3
Fax: +255 22 2130852
E-mail: dg@nbs.go.tz, [Website www.nbs.go.tz]

Vision

To be the authoritative source of statistical information pertaining to socio-economic conditions in the country, an institution able to provide such information most effectively, a point of reference for statistical methodologies and standards.

Mission

To facilitate planning and decision making within the government and the business community, to stimulate research and inform public debate through the provision of relevant, reliable and timely statistics and a quality statistical service in general.